

## Excerpts of March 5, 2012 Regular City Council Meeting

### ORDINANCE NO. 4473 – ANNEXING LINHA’S 2<sup>ND</sup> ADDITION, LOTS 1-5 AND LOTS 20-26 AND ADJACENT 30<sup>TH</sup> AVENUE RIGHT-OF-WAY – SECOND READING – APPROVED

Alderman Barney moved that the City Council place Ordinance No. 4473, annexing Linha's 2<sup>nd</sup> Addition, Lots 1-5 and Lots 20-26 and adjacent 30<sup>th</sup> Avenue right-of-way, on second reading. Motion seconded by Alderman Jantzer and carried unanimously.

Alderman Barney moved that the City Council pass Ordinance No. 4473 on second reading. Motion seconded by Alderman Jantzer and carried by the following roll call vote: ayes: Barney, Connoles, Frantsvog, Frey, Greenheck, Hatlelid, Jantzer, Knudsvig, Lehner, Miller, Olson, Seymour, Withus. nays: none.

Cc: File  
Assessor's Dept  
Engineering Dept  
Fire Dept  
Police Dept  
Public works Dept  
PSAP Manager  
Water Billing  
Ward County Auditor  
SRT  
MDU  
Xcel Energy  
Minot Public Schools  
Ward County Tax Equalization  
Petitioner

**ORDINANCE NO. 4473**

**AN ORDINANCE ANNEXING PROPERTY TO THE CITY  
OF MINOT AND EXTENDING THE BOUNDARY OF THE  
CITY OF MINOT.**

BE IT ORDAINED BY THE CITY COUNCIL OF THE CITY OF MINOT:

Section 1. The city limits of the City of Minot are hereby extended to include as a part of the property contained within the corporate limits of the City of Minot, the following described property:

**Linha's 2<sup>nd</sup> Addition, Lots 1-5 and Lots 20-26 and adjacent 30<sup>th</sup> Avenue right-of-way.**

Section 2. This property is currently zoned General Commercial District. Any development of this property shall be in accordance with the provisions as set forth in the City of Minot Zoning Ordinance.

Section 3. This ordinance shall be in full force and effect from and after its passage and approval.

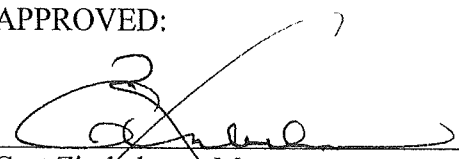
PASSED FIRST READING: February 6, 2012

PASSED SECOND READING: March 5, 2012

APPROVED:

ATTEST:

  
\_\_\_\_\_  
Katy Solar, City Clerk

  
\_\_\_\_\_  
Curt Zimbelman, Mayor

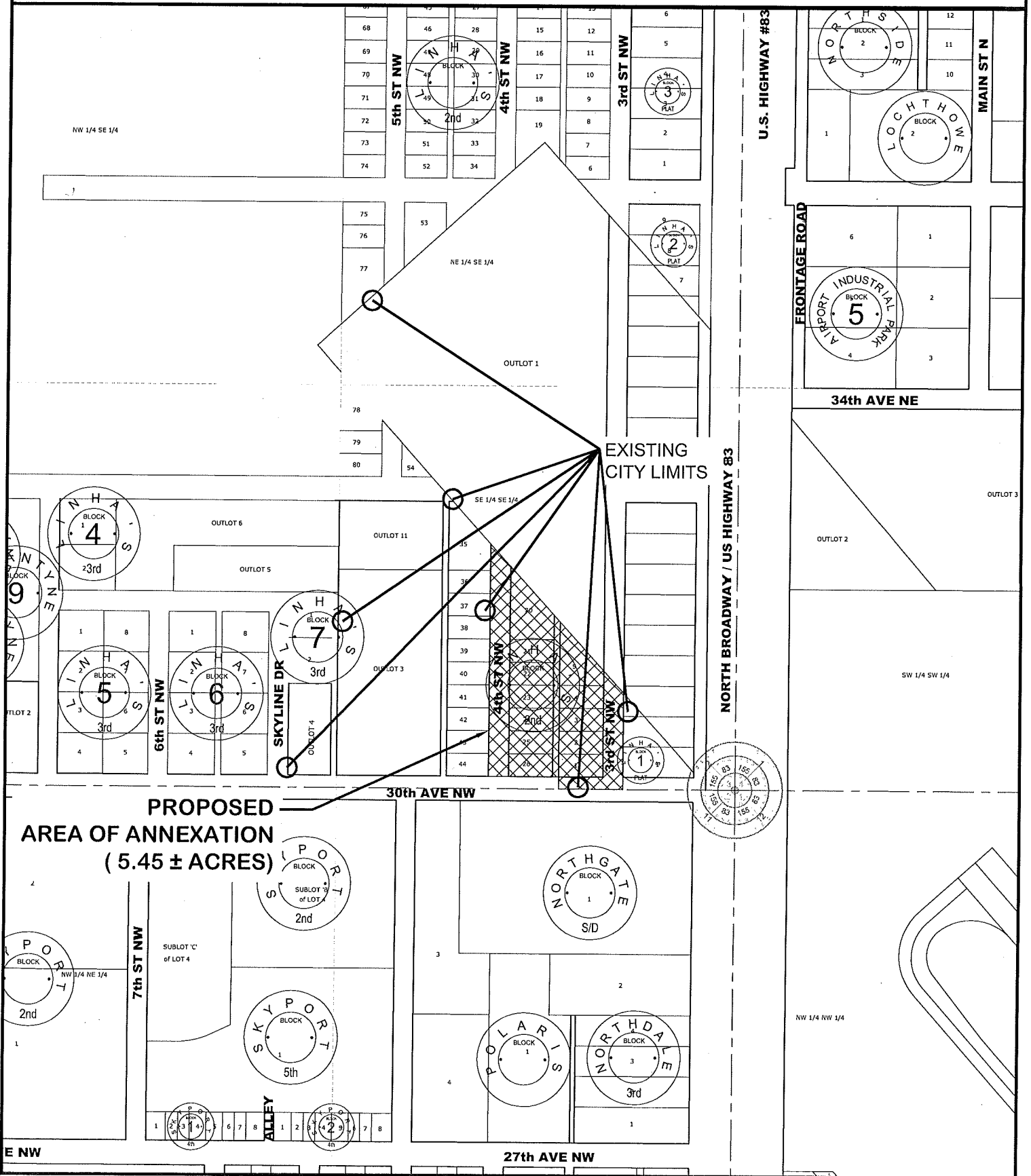
# ANNEXATION EXHIBIT

## LEGAL DESCRIPTION: LINHA'S 2ND ADDITION

LOTS 1 - 5 & 20 - 26 AND ADJACENT 3RD ST NE & VACATED 4TH ST NW,

WARD COUNTY, NORTH DAKOTA

SAID TRACT CONTAINS 5.45 ACRES MORE OR LESS



PROPOSED  
 AREA OF ANNEXATION  
 ( 5.45 ± ACRES )

EXISTING  
 CITY LIMITS

NORTH GATE  
 BLOCK 1  
 S/D

POLARIS  
 BLOCK 1

NORTH DALLAM  
 BLOCK 3  
 3rd

ALP  
 PORT INDUSTRIAL PARK  
 BLOCK 5

E NW

27th AVE NW

U.S. HIGHWAY #83

NORTH BROADWAY / US HIGHWAY 83

FRONTAGE ROAD

MAIN ST N

34th AVE NE

SW 1/4 SW 1/4

NW 1/4 NW 1/4

OUTLOT 1

OUTLOT 3

OUTLOT 2

OUTLOT 6

OUTLOT 11

OUTLOT 5

OUTLOT 3

30th AVE NW

7th ST NW

SUBLOT C'  
 of LOT 4

ALP  
 PORT  
 BLOCK 2  
 2nd  
 SUBLOT B'  
 of LOT 4

SKYLINE  
 BLOCK 1  
 5th

ALLEY

4th

4th ST NW

3rd ST NW

5th ST NW

4th ST NW

3rd ST NW

NW 1/4 SE 1/4

NE 1/4 SE 1/4

SE 1/4 SE 1/4