

728188

PG 2 of 3

GRAND FORKS COUNTY Recorded: 1/24/2013 at 3:25 PM

Return To: GRAND FORKS CITY

PO BOX 5200

GRAND FORKS, ND 58206-5200

ORDINANCE NO. 4373

AN ORDINANCE TO ANNEX ALL OF LOTS 2 AND 3, BLOCK 1, KORYNTA-LEMM 4TH RESUBDIVISION AND THE EAST 750.71 FEET OF THE SOUTH 140 FEET OF LOT 2, BLOCK 6 OF KORYNTA-LEMM SUBDIVISION TO THE CITY OF GRAND FORKS, NORTH DAKOTA.

BE IT ORDAINED BY THE CITY COUNCIL OF THE CITY OF GRAND FORKS, NORTH DAKOTA, THAT:

Section 1.


The following territory is hereby annexed to the City of Grand Forks, North Dakota, together with the full width of all platted streets and public rights-of-way contiguous thereto:

ANNEX ALL ALL OF LOTS 2 AND 3, BLOCK 1, KORYNTA-LEMM 4TH RESUBDIVISION AND THE EAST 750.71 FEET OF THE SOUTH 140 FEET OF LOT 2, BLOCK 6 OF KORYNTA-LEMM SUBDIVISION TO THE CITY OF GRAND FORKS, NORTH DAKOTA.

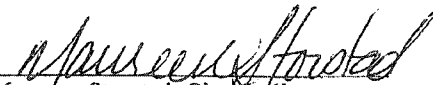
SAID TRACT CONTAINS 513,218.71 SQUARE FEET OR 11.78 ACRES, MORE OR LESS, AND IS AS SHOWN ON THE ATTACHED MAP, WHICH IS BY REFERENCE MADE A PART HEREOF.

Section 2.

This ordinance shall be in full force and effect after its passage and approval as provided by law.


Michael R. Brown, Mayor

ATTEST:


Maureen Storstad, City Auditor

Introduction and first reading: July 2, 2012

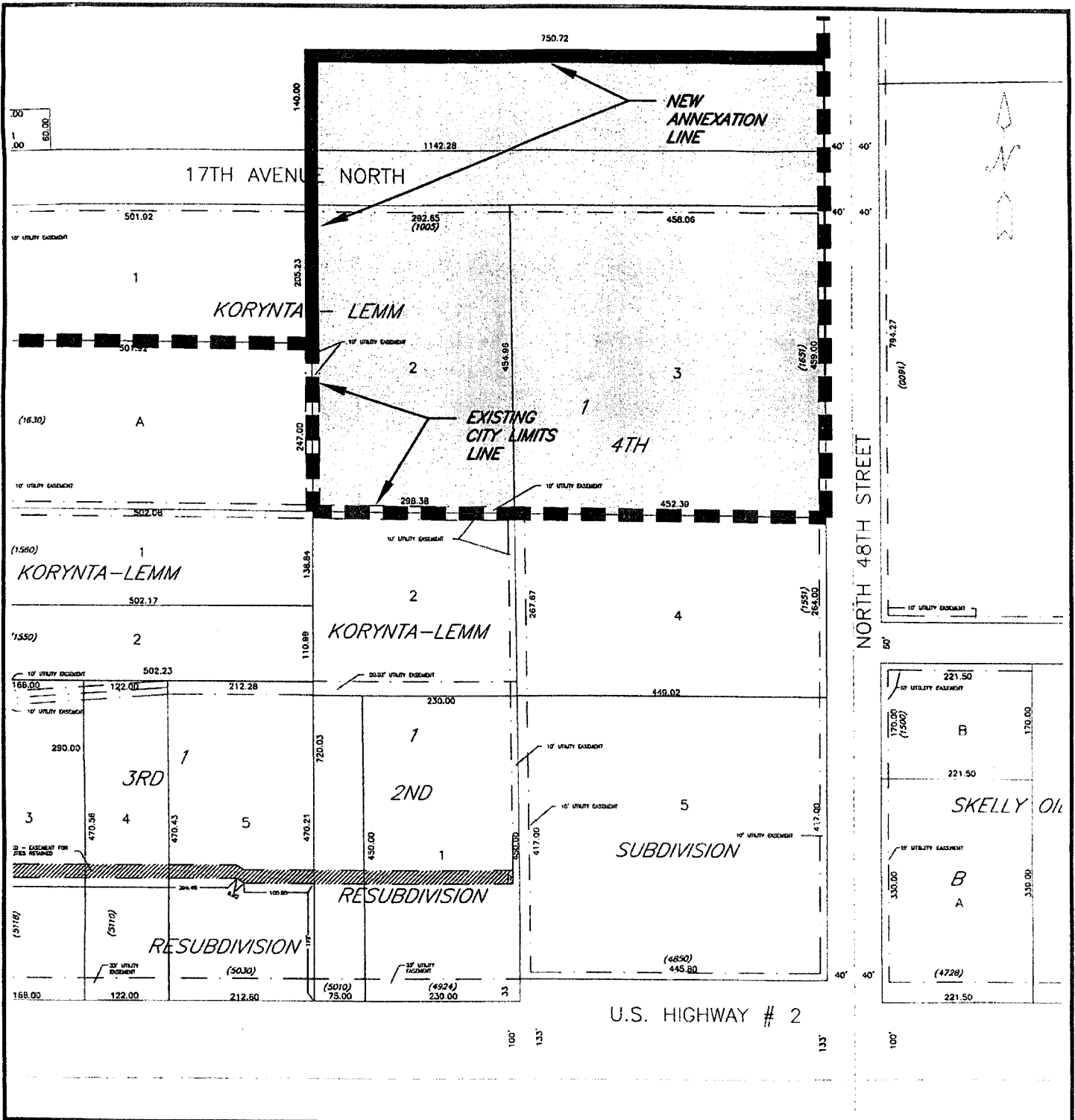
Public Hearing: August 6, 2012

Second reading and final passage: August 6, 2012

Approved: August 6, 2012

Published: Not required by law.


Recorded:



LAND DESCRIPTION:

ALL OF LOTS 2 AND 3, BLOCK 1, KORYNTA-LEMM 4TH RESUBDIVISION AND THE EAST 750.71 FEET OF THE SOUTH 140 FEET OF LOT 2, BLOCK 6 OF KORYNTA-LEMM SUBDIVISION TO THE CITY OF GRAND FORKS, NORTH DAKOTA TOGETHER WITH THE FULL WIDTH OF PLATTED 17TH AVENUE NORTH RIGHT OF WAY CONTIGUOUS THERTO. SAID ANNEXATION AREA CONTAINING 513,218.71 SQUARE FEET OR 11.78 ACRES. AS SHOWN ON THE ATTACHED MAP, WHICH IS BY REFERENCE MADE A PART HEREOF.

P:\Projects\Legal Survey Drawings\ANNEXATION-KORYNTA-LEMM.dwg


ANNEXATION
KORYNTA-LEMM SUBDIVISION &
KORYNTA-LEMM 4TH RESUBDIVISION

DATE: 3-30-12	REVIEWED: B. BARTHOLOMEW
SCALE: 1"=200'	DRAWN BY: J. CLAWSON