

--- EXISTING ANNEXATION LINE
 = NEW ANNEXATION LINE

714075

PG 2 of 3

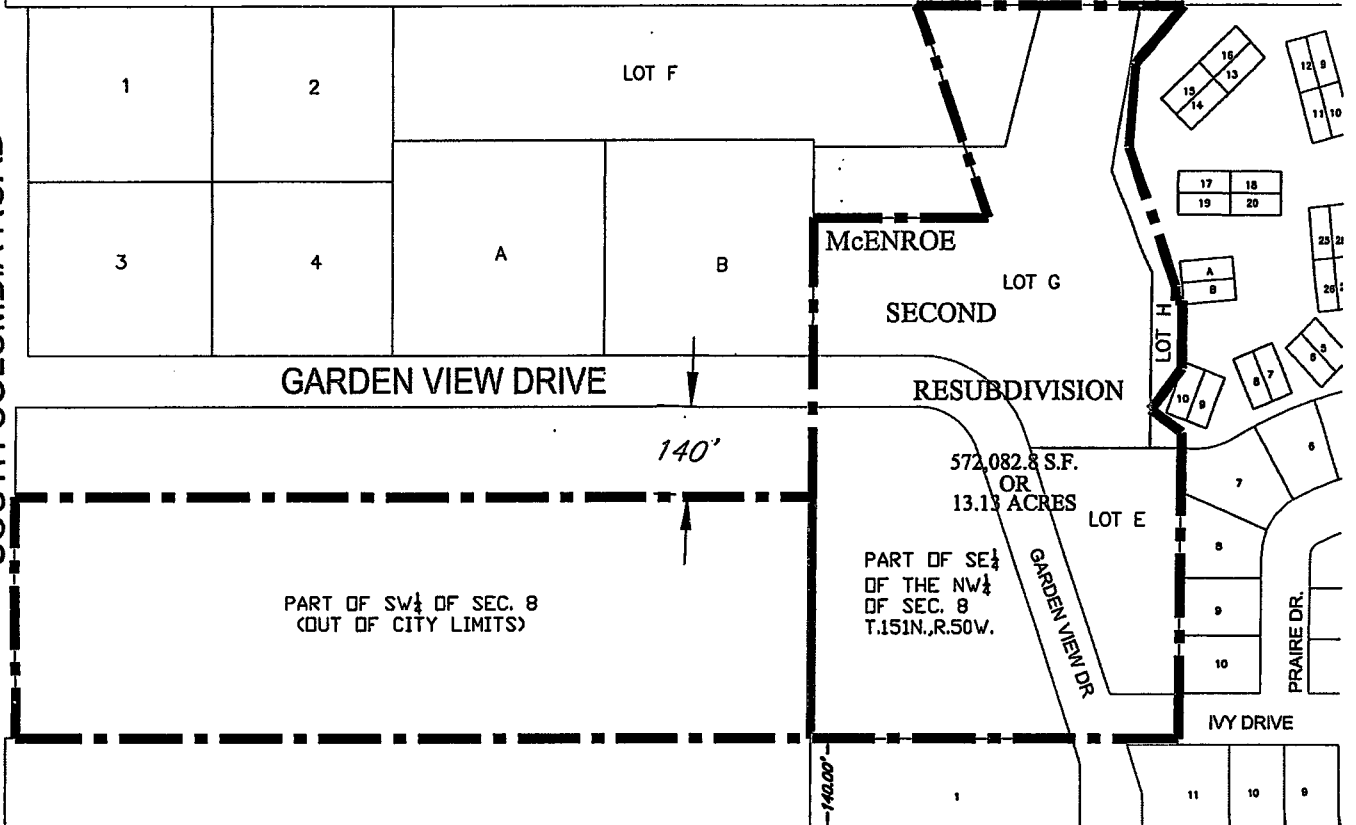
GRAND FORKS COUNTY Recorded: 12/07/2011 at 1:00 PM

Return To: GRAND FORKS CITY

PO BOX 5200

GRAND FORKS, ND 58206-5200

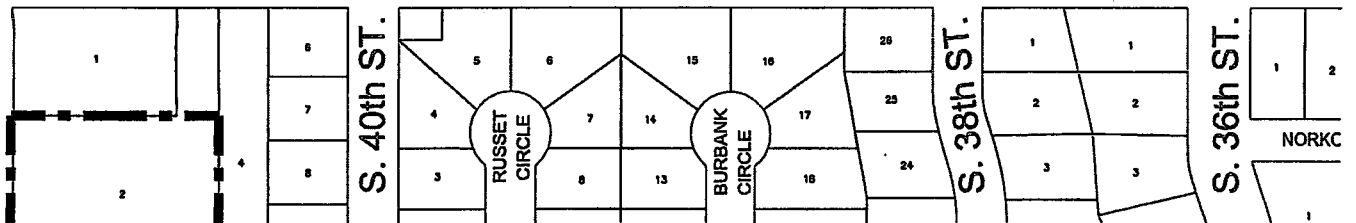
SOUTH COLUMBIA ROAD



PART OF SW 1/4 OF SEC. 8
(OUT OF CITY LIMITS)

572,082.8 S.F.
OR
13.13 ACRES
PART OF SE 1/4
OF THE NW 1/4
OF SEC. 8
T.151N., R.50W.

11th AVE S



LAND DESCRIPTION:

ANNEXATION OF PARTS OF LOTS F&G AND ALL OF LOT H, BLOCK 1* AND ALL OF LOT E, BLOCK 1, McENROE SECOND RESUBDIVISION AND PARTS OF GARDEN VIEW DRIVE AND IVY DRIVE ADJACENT THERETO AND PARTS OF THE SOUTHEAST QUARTER OF THE NORTHWEST QUARTER OF SECTION 8, TOWNSHIP 151 NORTH, RANGE 50 WEST OF THE FIFTH PRINCIPAL MERIDIAN, NOT PREVIOUSLY ANNEXED TO THE CITY OF GRAND FORKS, NORTH DAKOTA, CONTAINING 572,082.8 S.F. OR 13.13 ACRES.

jects\LegalSurveyDrawings\Annexation-McEnroe Second Resubdivision-20110324.dwg

*of the Replat of C and D, Block 1, Mcenroe Second Resub.

ANNEXATION:
 McENROE SECOND RESUBDIVISION

DATE: 10/26/2011	REVIEWED: B. BARTHOLOMEW
SCALE: 1" = 300'	DRAWN BY: Mike Knecht