

Community Development Department

**MEMORANDUM
ANNEXATION
EAGLE CREST 6TH ADDITION**

TO: Duwayne Schoepp, CenturyLink
Mike Berg, Capital Electric Cooperative
Patrick Darras, MDU
Bill Boyd, Midcontinent Communications
Roger Roehl, ND Department of Transportation
Darin Scherr, Bismarck School District
Susan Rood, Office of the State Tax Commissioner
Brady Blaskowski, Building Inspections
Randy Ziegler, Police Department
Deb Goodsell, City Assessing
Mel Bullinger, City Engineer
Marcus Hall, County Engineer
Corrine Jochim, County Auditor's Office
Greg Carlson, County GIS
Joel Boespflug, Fire Department
Les Witkowski, Sheriff's Office
Jami Wangler, GIS
North Dakota State Tax Department

FROM: Community Development Department ~ Planning Division

DATE: September 16, 2013

SUBJECT: Annexation – Part of Eagle Crest 6th Addition

Please be advised that part of Eagle Crest 6th Addition has recently been annexed to the corporate limits of the City of Bismarck, as indicated in the attached Ordinance 5965.

The above annexation was approved by the Board of City Commissioners on June 11, 2013 and was recorded by the Burleigh County Recorder's Office on September 13, 2013.

If you have any questions or need any additional information on this request, please contact Kim Lee, the planner in our office assigned to this request, at 355-1846.

Bismarck-Burleigh County Community Development Department
221 North 5th Street • PO Box 5503 • Bismarck, ND 58506-5503 • TDD: 711 • www.bismarck.org



CORRECTIVE ORDINANCE NO. 5965

<i>First Reading</i>	<u>May 14, 2013</u>
<i>Second Reading</i>	<u>June 11, 2013</u>
<i>Final Passage and Adoption</i>	<u>June 11, 2013</u>
<i>Publication Date</i>	<u>May 31 & June 7, 2013</u>

AN ORDINANCE ANNEXING PROPERTY TO THE CORPORATE LIMITS OF THE CITY OF BISMARCK, NORTH DAKOTA, DECLARING THE TERRITORY ANNEXED; DECLARING THE SAME TO BE A PART OF THE CORPORATE LIMITS OF SAID CITY.

BE IT ORDAINED BY THE BOARD OF CITY COMMISSIONERS OF THE CITY OF BISMARCK, NORTH DAKOTA.

Section 1. Territory Annexed. The territory and land hereinafter described is hereby declared and found to be a part of the corporate limits of the City of Bismarck, North Dakota, as follows:

Lots 1-13, Block 1; Lots 1-~~98~~, Block 2; Lots 1-8, Block 3; Lot 1, Block 4; Lots 1-3, Block 9; Lots 1-15, Block 11; Lots 1-~~25~~23, Block 12; and Lots 1-22, Block 13, Eagle Crest 6th Addition

The above described tract of land contains 38.25 acres, more or less.

Section 2. Provisions Applicable. From and after the final passage and adoption of this Ordinance and upon recording of this ordinance with the Burleigh County Recorder, the territory herein described shall be a part of the corporate limits of the City of Bismarck, North Dakota.

ORDINANCE NO. 5965

COPY

<i>First Reading</i>	<u>May 14, 2013</u>
<i>Second Reading</i>	<u>June 11, 2013</u>
<i>Final Passage and Adoption</i>	<u>June 11, 2013</u>
<i>Publication Date</i>	<u>May 31 & June 7, 2013</u>

AN ORDINANCE ANNEXING PROPERTY TO THE CORPORATE LIMITS OF THE CITY OF BISMARCK, NORTH DAKOTA, DECLARING THE TERRITORY ANNEXED; DECLARING THE SAME TO BE A PART OF THE CORPORATE LIMITS OF SAID CITY.

BE IT ORDAINED BY THE BOARD OF CITY COMMISSIONERS OF THE CITY OF BISMARCK, NORTH DAKOTA.

Section 1. Territory Annexed. The territory and land hereinafter described is hereby declared and found to be a part of the corporate limits of the City of Bismarck, North Dakota, as follows:

Lots 1-13, Block 1; Lots 1-9, Block 2; Lots 1-8, Block 3; Lot 1, Block 4; Lots 1-3, Block 9; Lots 1-15, Block 11; Lots 1-25, Block 12; and Lots 1-22, Block 13, Eagle Crest 6th Addition

The above described tract of land contains 38.25 acres, more or less.

Section 2. Provisions Applicable. From and after the final passage and adoption of this Ordinance and upon recording of this ordinance with the Burleigh County Recorder, the territory herein described shall be a part of the corporate limits of the City of Bismarck, North Dakota.

STATE OF NORTH DAKOTA)
)
COUNTY OF BURLEIGH)

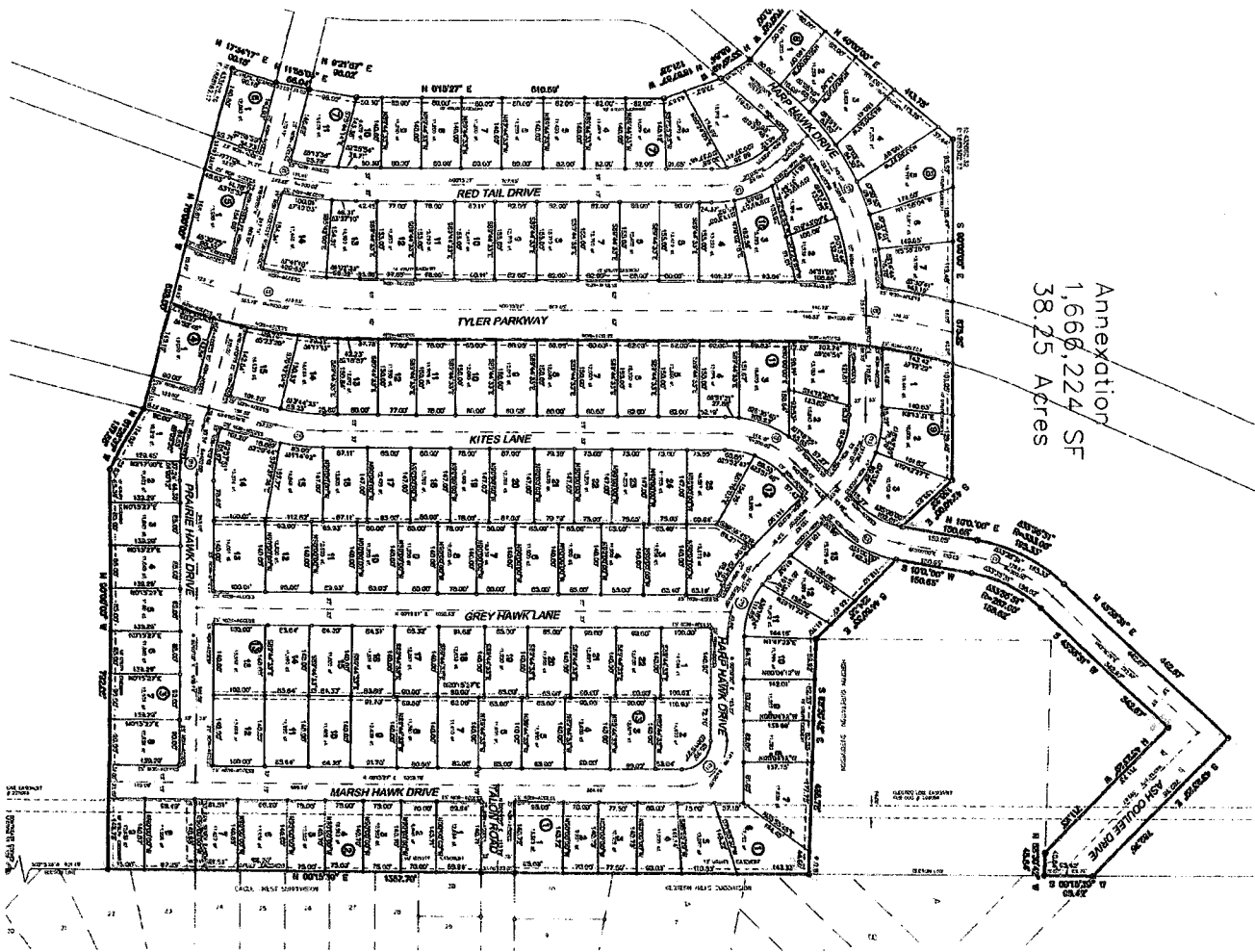
I, Keith J. Hunke, do hereby certify that I am the duly appointed, qualified Assistant City Administrator of the City of Bismarck, North Dakota and that the foregoing is a full, true and correct copy of an ordinance adopted by the Board of City Commissioners at its regular meeting of June 11, 2013.

IN WITNESS WHEREOF, I have hereunto set my hand and the seal of the City of Bismarck, North Dakota, this 13th day of June, 2013.

(SEAL)



Keith J. Hunke, Assistant City Administrator



Annexation
1,668,224 SF
38.25 Acres