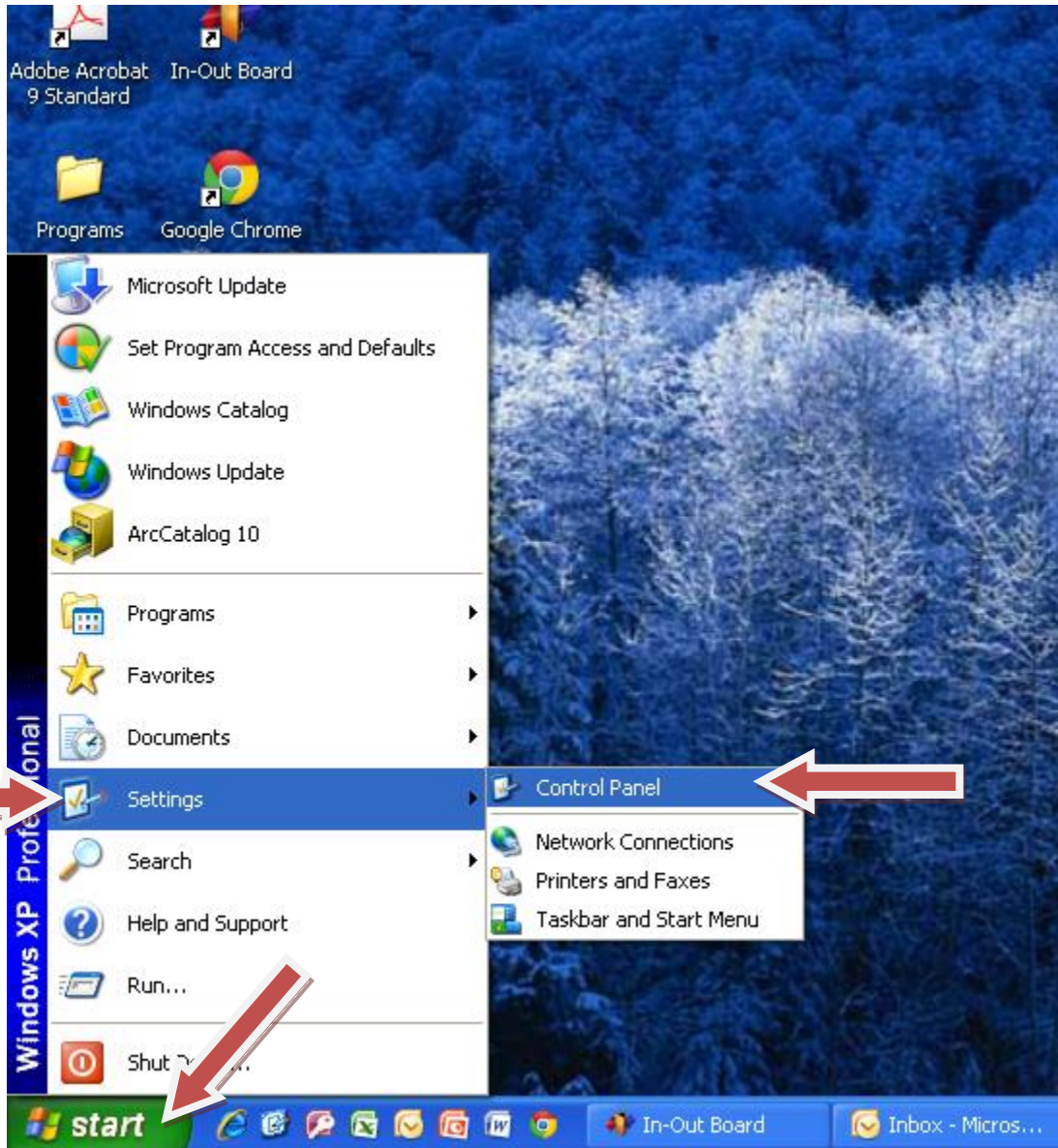


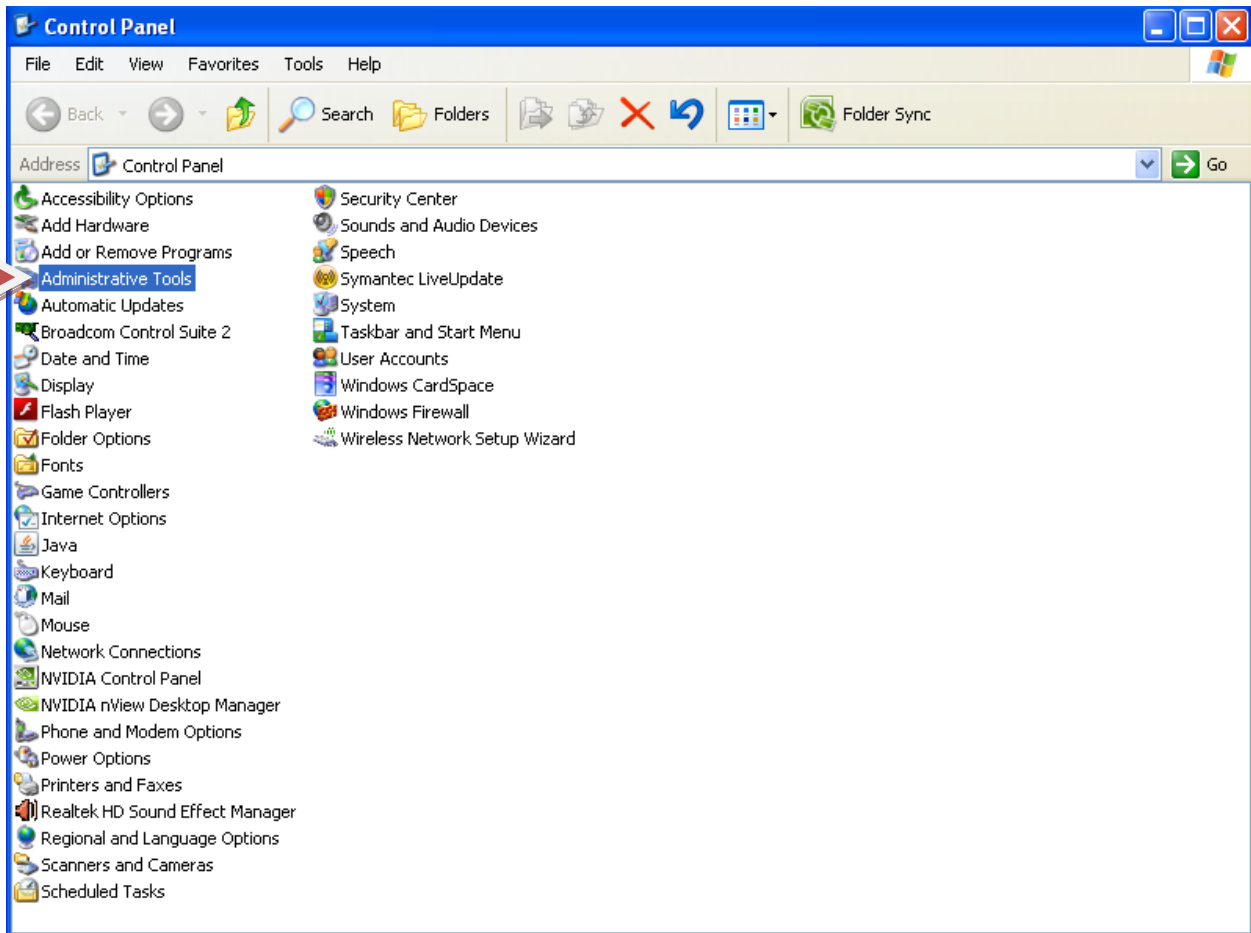
Finding Your Com Port (USB)

Step 1



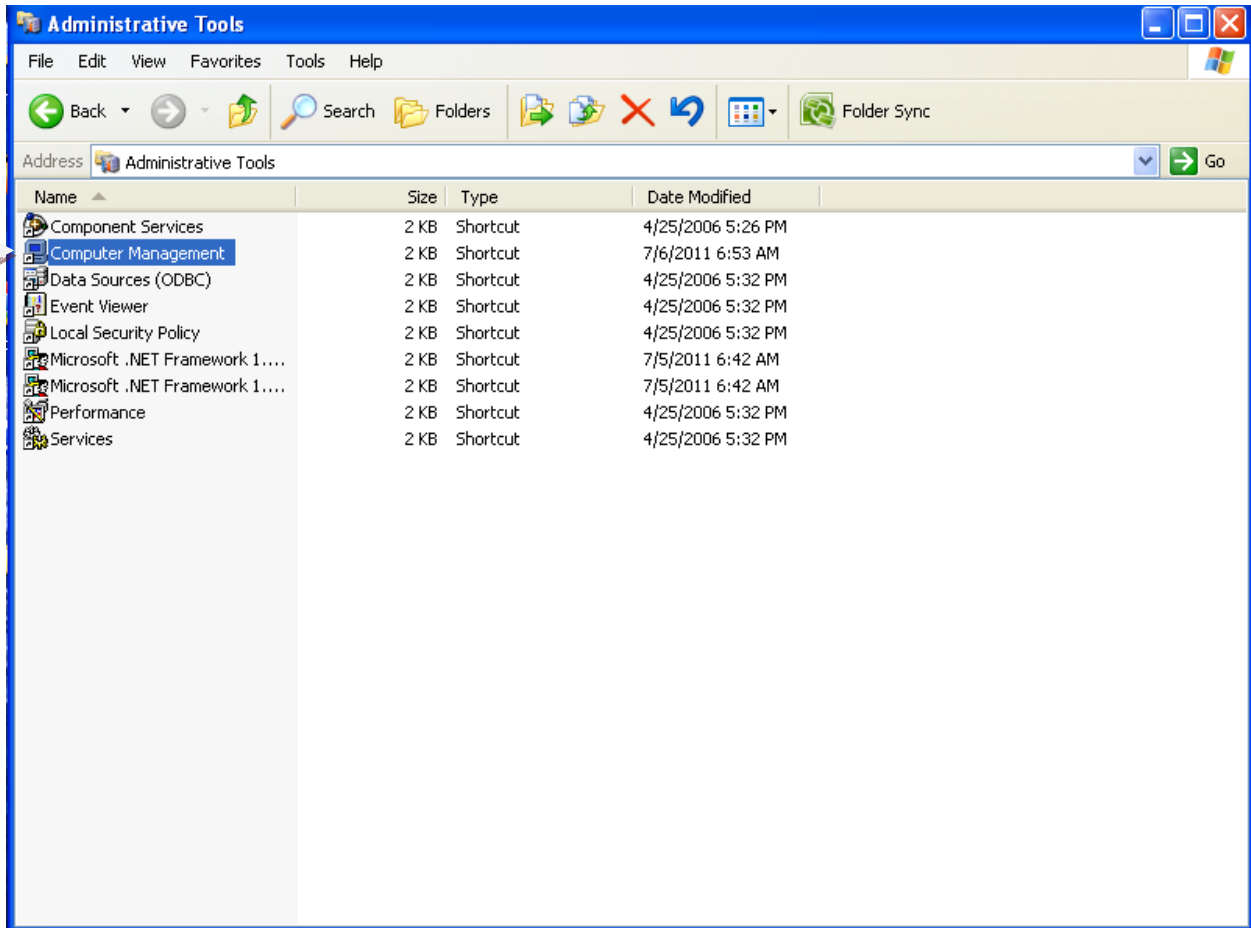
Click “Start”, point to “Settings”, then click on “Control Panel”.

Step 2



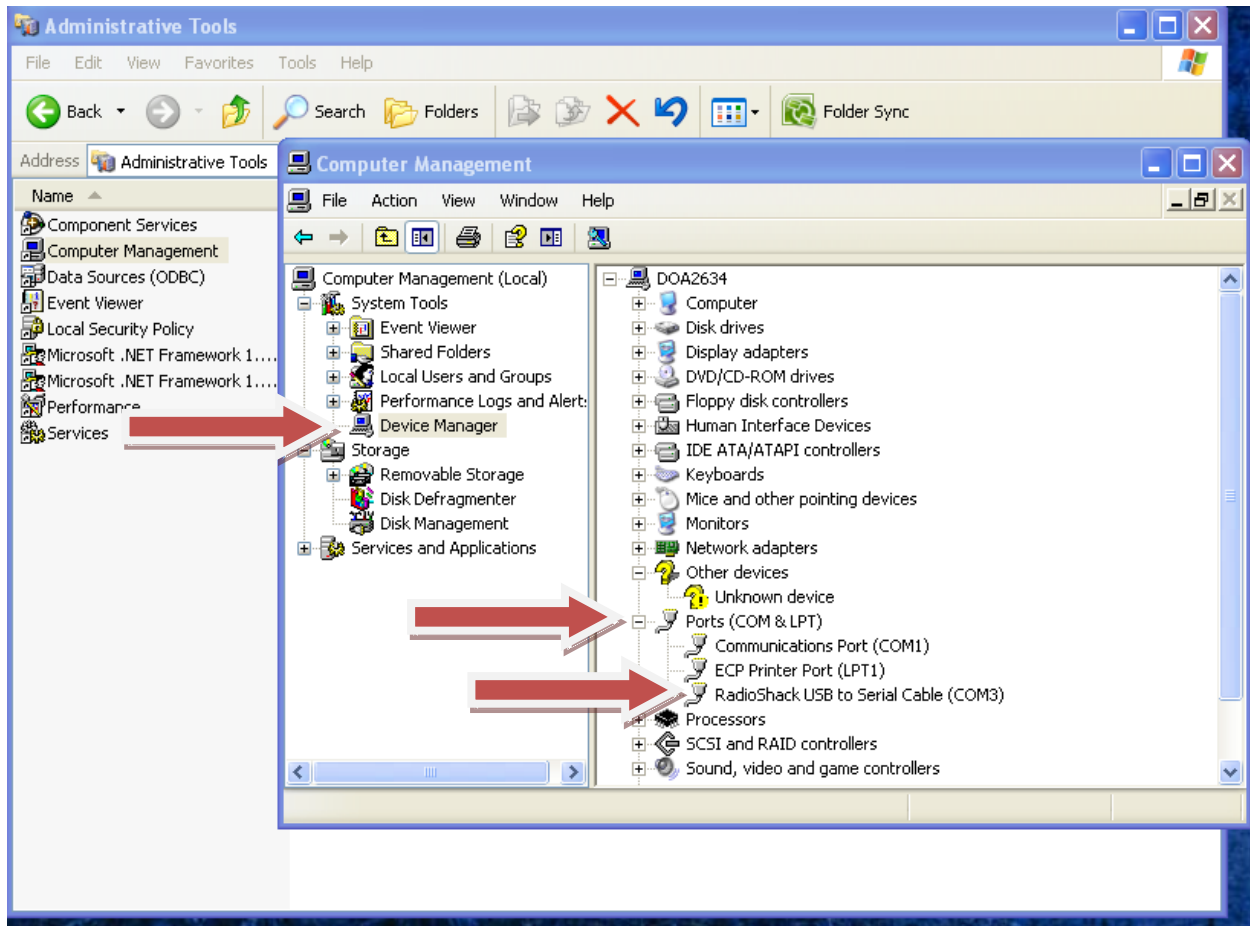
Double Click on “Administration Tools”.

Step3



Double click on “Computer Management”.

Step4



Single click on “Device Manager”. Expand “Ports” by clicking on the “Plus” sign.

NOTE: The USB Serial Port is the one you will need to remember. Choose this one when doing your GPS Com Port setup.