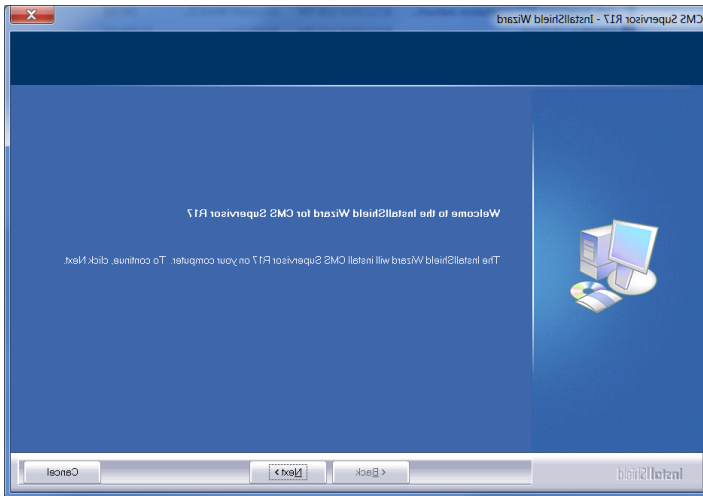


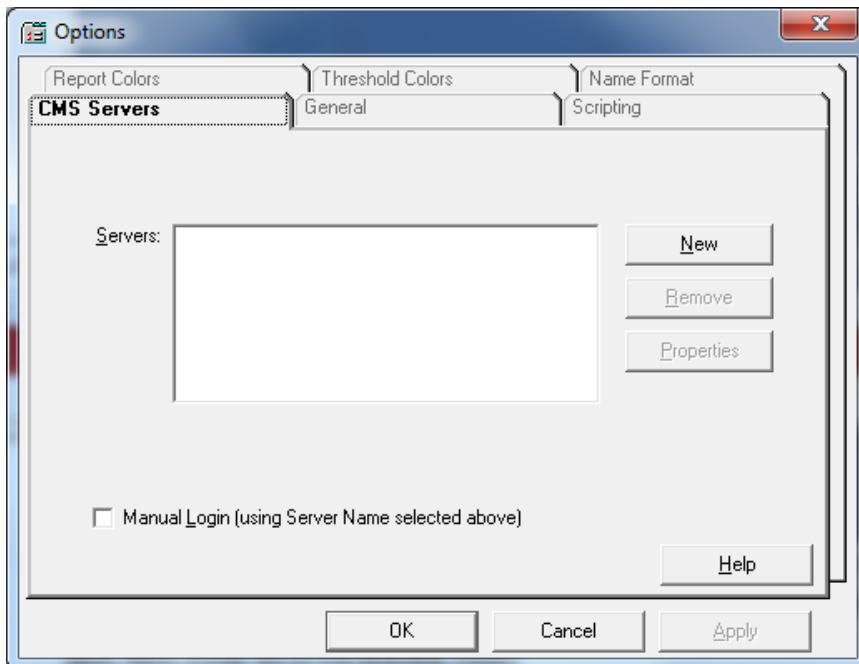
Run the file downloaded from this page.



Click Next, Typical, Install, No on the README, and Finish.

In your Start menu, All Programs, in a folder named Avaya, CMS Supervisor R19 folder, right click on CMS Supervisor R19--English and select either Pin to Start Menu or Send To Desktop as a shortcut.

Launch CMS Supervisor R19 and accept the license.



Select New, enter the Server Name: itdbiscms2.nd.gov, connection type SSH, and **Select Server Version CMS R19** Select OK and OK again.

Server Properties

Choose a connection method and set its options.

Server Name:

Server Version:

Connection

Network Serial Modem SSH

Network Settings

CMS Network Address:

Network Port:

Options

Report Colors | Threshold Colors | Name Format

CMS Servers | General | Scripting

Servers:

Manual Login (using Server Name selected above)

Enter you Login ID (nd.gov username first 8 characters typically)

Enter your temporary password or the password you have been using. The password will not expire and is not associated with your nd.gov password. The password must be at least 8 characters in length and include one number or special character in the first 8 characters.

