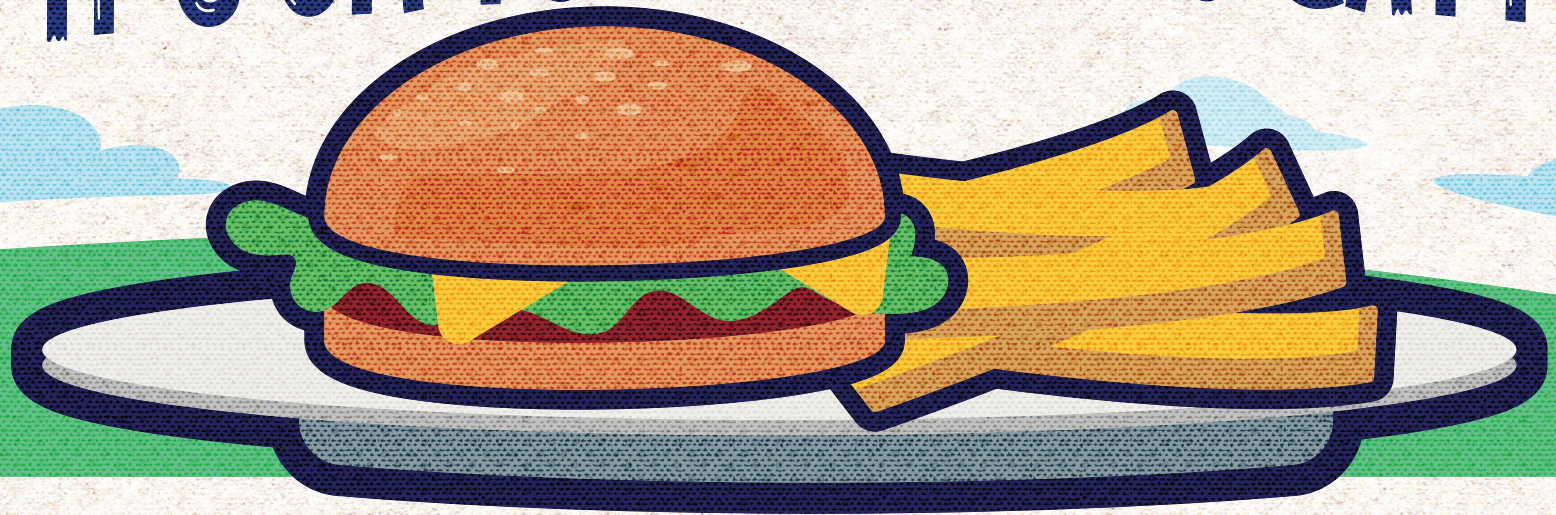
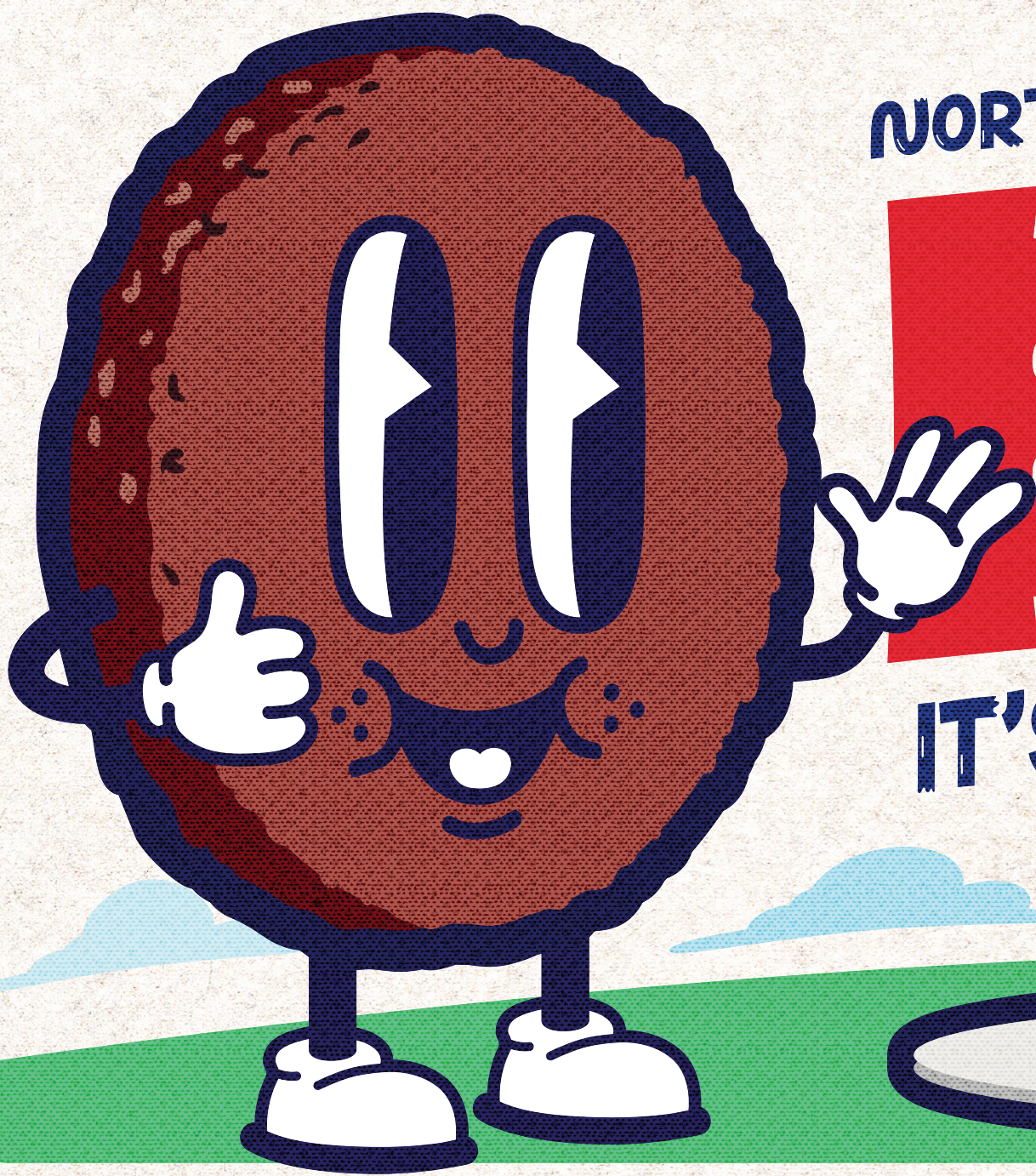


NORTH DAKOTA HARVEST OF THE MONTH

BEEF!

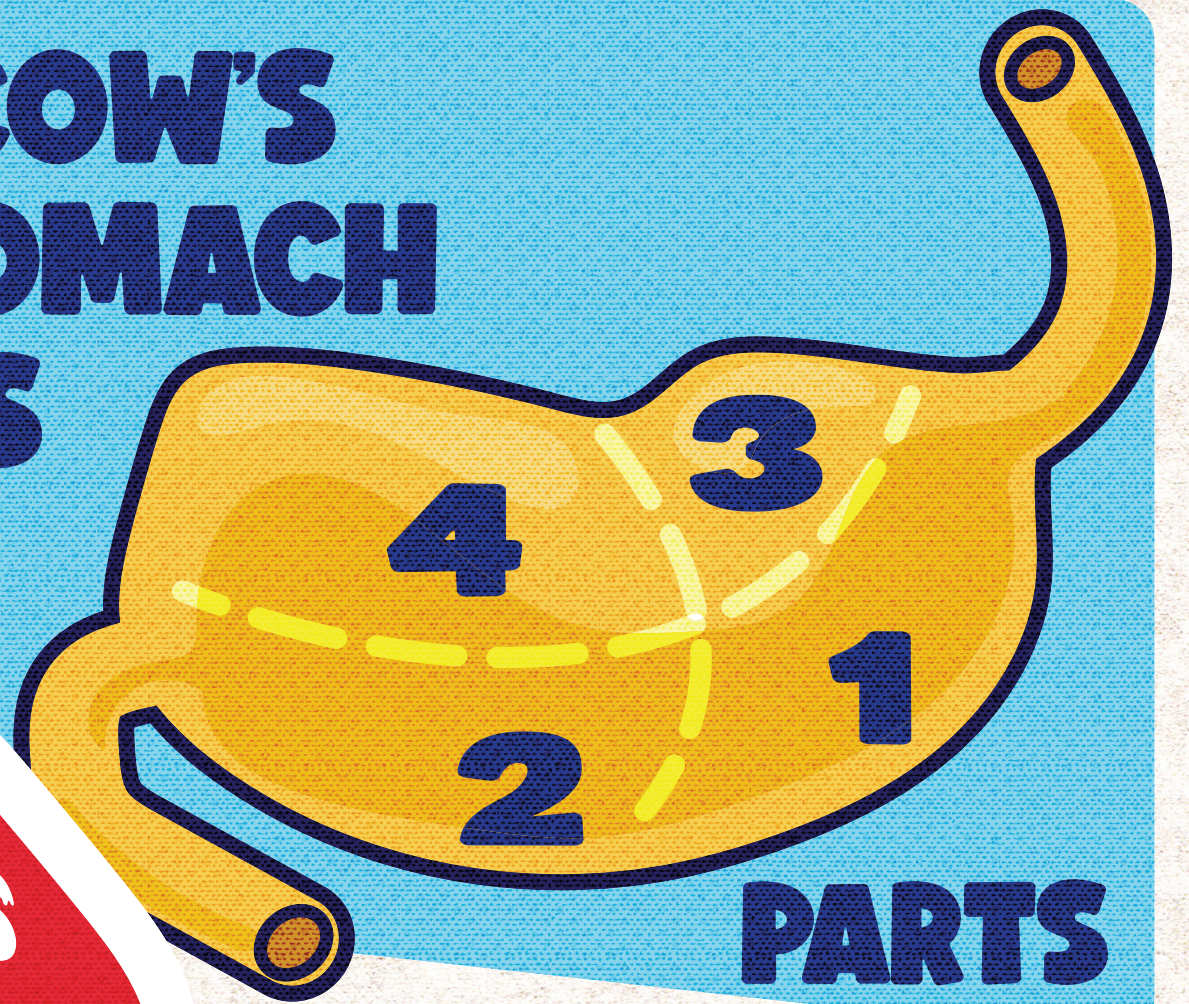
IT'S OK TO TATTLE ON CATTLE.



Cattle are great



A COW'S
STOMACH
HAS



PARTS

NORTH DAKOTA raises
enough cattle to feed

11 million

PEOPLE FOR A YEAR

AMERICANS
EAT AN AVERAGE OF

55

pounds
of beef
per year



COWS
OUTNUMBER
HUMANS
in North Dakota

BEEF is rich
in PROTEIN & VITAMINS
which give you **ENERGY**

