



STATE'S ROLE IN ADDRESSING GAPS IN SOCIAL DETERMINANTS OF HEALTH

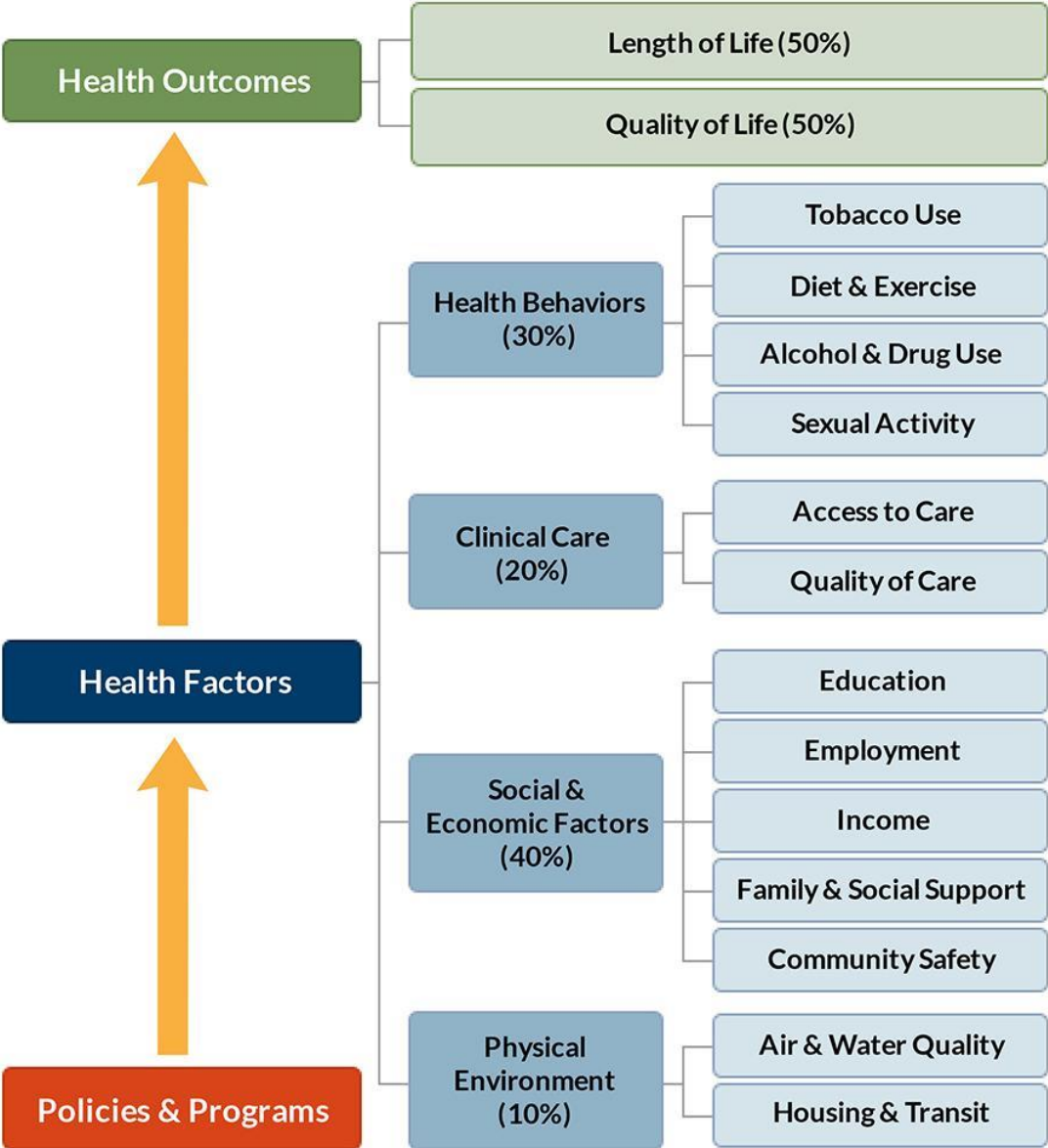
CHRIS JONES, EXECUTIVE DIRECTOR

NORTH
Dakota

Be Legendary.™

| Human Services

IMPACT OF SOCIAL DETERMINANTS IN OVERALL HEALTH OUTCOMES



County Health Rankings model © 2014 UWPHI

DHS ENABLES ACCESS TO SOCIAL DETERMINANTS OF HEALTH WHEN COMMUNITY RESOURCES ARE INSUFFICIENT



- **Social determinants of health are all necessary and mutually reinforcing** in securing the well being of an individual or family: **they are only as strong as the weakest link**
- **Community resources** shape and enable **access to the social determinants** (e.g., schools provide access to education, employment provides access to economic stability)
- **Investing in community resources** can in many cases **prevent individuals from needing to access DHS safety net services** to obtain the social determinants of health

PROVIDING ACCESS TO SOCIAL DETERMINANTS INVOLVES ADMINISTERING, PAYING FOR, PROVIDING, AND SUPPORTING NUMEROUS SERVICES

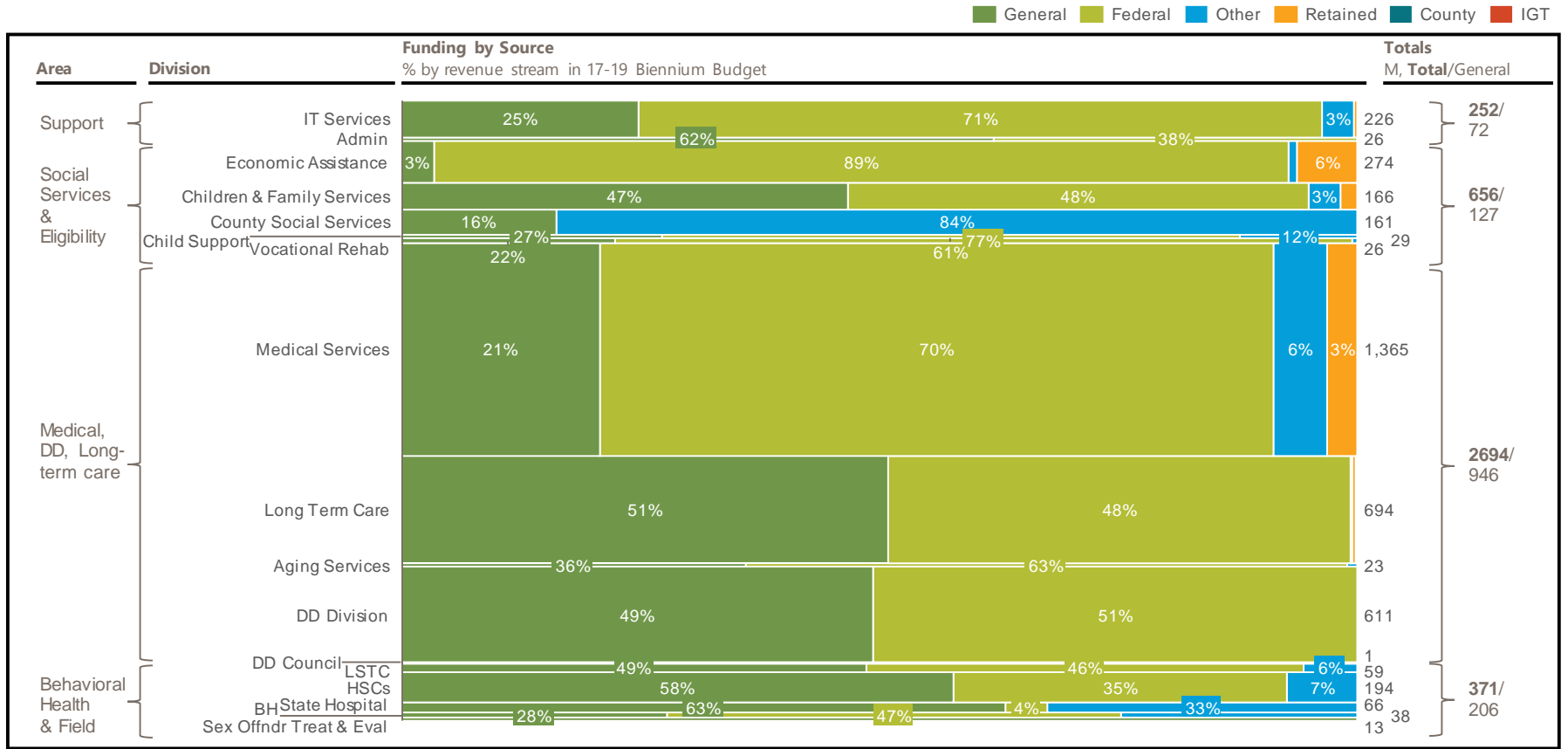
Administrator¹ **PAYOR** (state)
 Provider
 Partner

Social Determinant	Components	Social Services & Eligibility	Medical, DD & Long-term care	Behavioral Health Policy & Services ¹	Agency Partners
Economic Stability	<ul style="list-style-type: none"> Employment Income Expenses Debt 	TANF, LIHEAP, Child Support, Vocational Rehab, Child care assist.		EXTENDED SERVICES for those with SMI	Labor /Job Service
Education	<ul style="list-style-type: none"> Early Childhood Literacy/language Vocational Higher EDU 	Child care licensing			Public Instruction
Food	<ul style="list-style-type: none"> Hunger Access to healthy options 	SNAP/ Food stamps	Nutrition Services	RECOVERY SUPPORT SERVICES (including Free Through Recovery, PATH for those experiencing homelessness, and other programs)	Health / Local Public Health
Neighborhood & Built Environment	<ul style="list-style-type: none"> Housing Transportation Safety Parks 	CPS, Foster care, FOSTER CARE (IV-e)	NURSING FACILITIES, ICFs		Transportation
Social & Community Context	<ul style="list-style-type: none"> Integration Support Inclusion 	In-home supports	DD, HOME & COMMUNITY BASED SERVICES		Housing Authority
Health & Healthcare	<ul style="list-style-type: none"> Coverage Providers Quality of care Cultural competency 		TRADITIONAL, WAIVERS, VOUCHERS, CHIP, Expansion, LSTC	SBIRT, Parent's LEAD, STATE HOSPITAL, LSTC, HSCs³	Corrections
CASE MANAGEMENT					
JUVENILE JUSTICE					

This is for illustrative purposes only to capture majority of programs/services/entities and the connections they provide to social determinants of health; it is not exhaustive of all programs and services or connections

- While other public entities and private stakeholders also have an important role, they are excluded from this

AS A PAYOR DHS SPENDS MAJORITY ON MEDICAL, DD, & LONG-TERM CARE SERVICES, A SIGNIFICANT SHARE OF WHICH IS FROM GENERAL FUND



IN COST OF SERVICES, HIGHEST SPEND FOR CARE/SERVICES PER PERSON IS IN DD PROGRAMS AND INSTITUTIONAL SETTINGS

