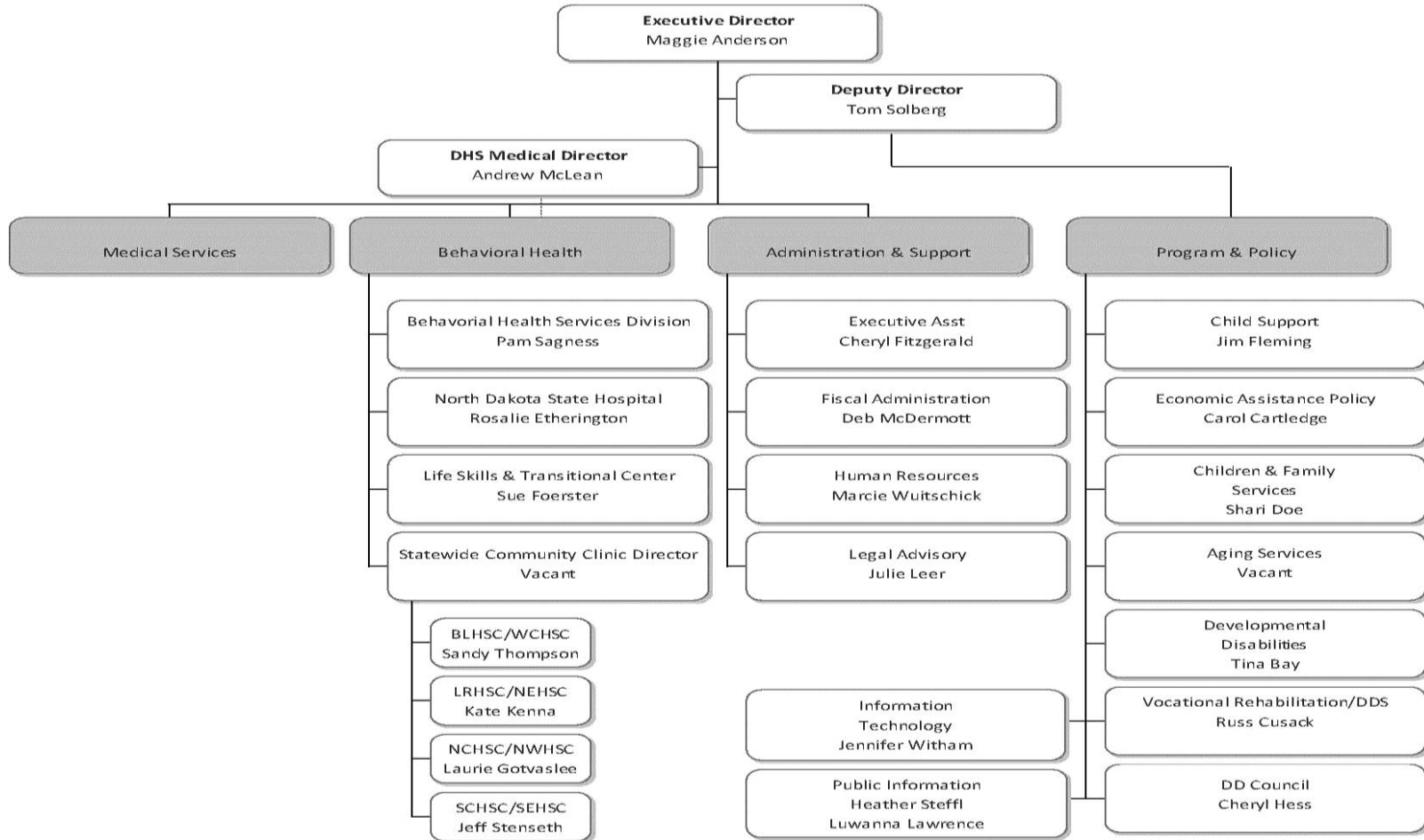


Political Subdivision Taxation Committee July 29, 2015

Department of Human Services Overview and Updates
Maggie Anderson, Director and Deb McDermott, CFO

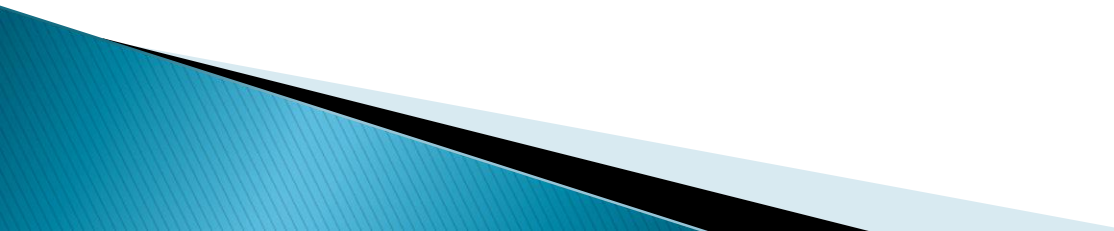
Department of Human Services



State Supervised – County Administered

50–01.2–03. Duties of county social service board.

The county social service board of each county in this state shall:

1. Supervise and direct all human service activities conducted by the county including county general assistance or other public assistance.
 2. Supervise and administer, under the direction and supervision of the department of human services, human services in the county which are financed in whole or in part with funds allocated or distributed by the department of human services.
 3. Aid and assist in every reasonable way to efficiently coordinate and conduct human service activities within the county by private as well as public organizations.
- 

Program and Service Areas

Economic Assistance

Medicaid (MAGI and LTC)
Children's Health Insurance Program
Temporary Assistance to Needy Families
Supplemental Nutrition Assistance
Program
Child Care Assistance
Low-Income Home Energy Assistance
Program

Home and Community-Based Services
Service Payments for the Elderly and
Disabled (SPED)
Expanded SPED

Children and Family Services

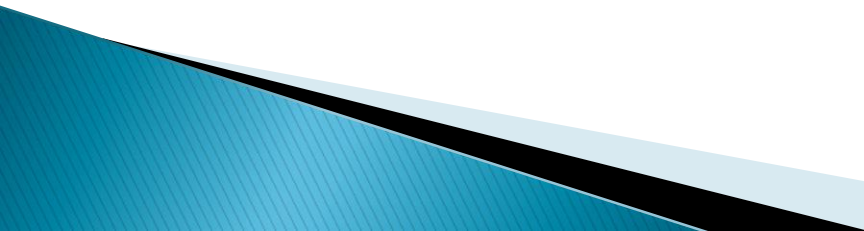
Foster Care Case Management
Foster Care Home Licensing
Subsidized Adoption
Child Abuse and Neglect
Family Preservation
Child Care Licensing
Subsidized Guardianship



History of state and county social services

- ▶ 1997 HB 1041, commonly referred to as the "SWAP" legislation required the counties to assume the financial responsibility of administering economic assistance programs in exchange for the state assuming the financial responsibility of the economic assistance grant costs.
- ▶ This change was effective January 1, 1998 and was approved with the concept that the estimated costs assumed by the county and the state would be comparable for the first 18 months of implementation.

History, Cont.

- ▶ The underlying assumption of the legislation was that the counties had very little control over the services or eligibility criteria included in the economic assistance grant programs.
 - ▶ Counties would be able to control the cost of administering the grant programs.
 - ▶ It was believed that although the county administrative costs would increase, the grant costs would increase by a larger percentage and the counties would avoid the large cost increases associated with the rising grant costs.
- 

- ▶ Since 1998 there has been ongoing discussion about the comparison of the administrative and grant cost increases.
- ▶ Regardless, the costs the counties incur to administer the social services programs are covered through property taxes.

**Which leads to 2015 SB 2206
And the Social Services
Finance Working Group**

Social Service Finance Working Group

- ▶ Mike Montplaisir – Cass County
- ▶ Randi Suckut – Wells County
- ▶ Kim Jacobson – Trail County
- ▶ Steve Reiser – Dakota Central
- ▶ Terry Traynor, ND Association of Counties
- ▶ Lori Laschkewitsch – OMB
- ▶ Joe Morrissette – Office of the Tax Commissioner
- ▶ Deb McDermott – DHS CFO
- ▶ Maggie Anderson – DHS

First Meeting Held June 18, 2015

- ▶ Discuss purpose and outcomes
 - ▶ Update on Section 6 of 2015 SB 2206
 - Human Services Grant Program (Levy 1222)
 - Eligible Counties
 - Emergency Rules
 - ▶ Establishing the percent increases for 2016 budgets
 - ▶ Collecting financial information
 - ▶ Next Meeting is September 2 in Bismarck
- 