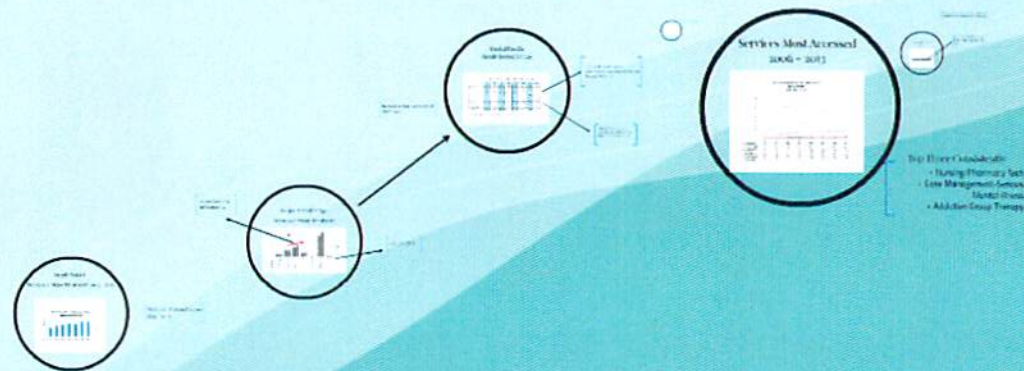


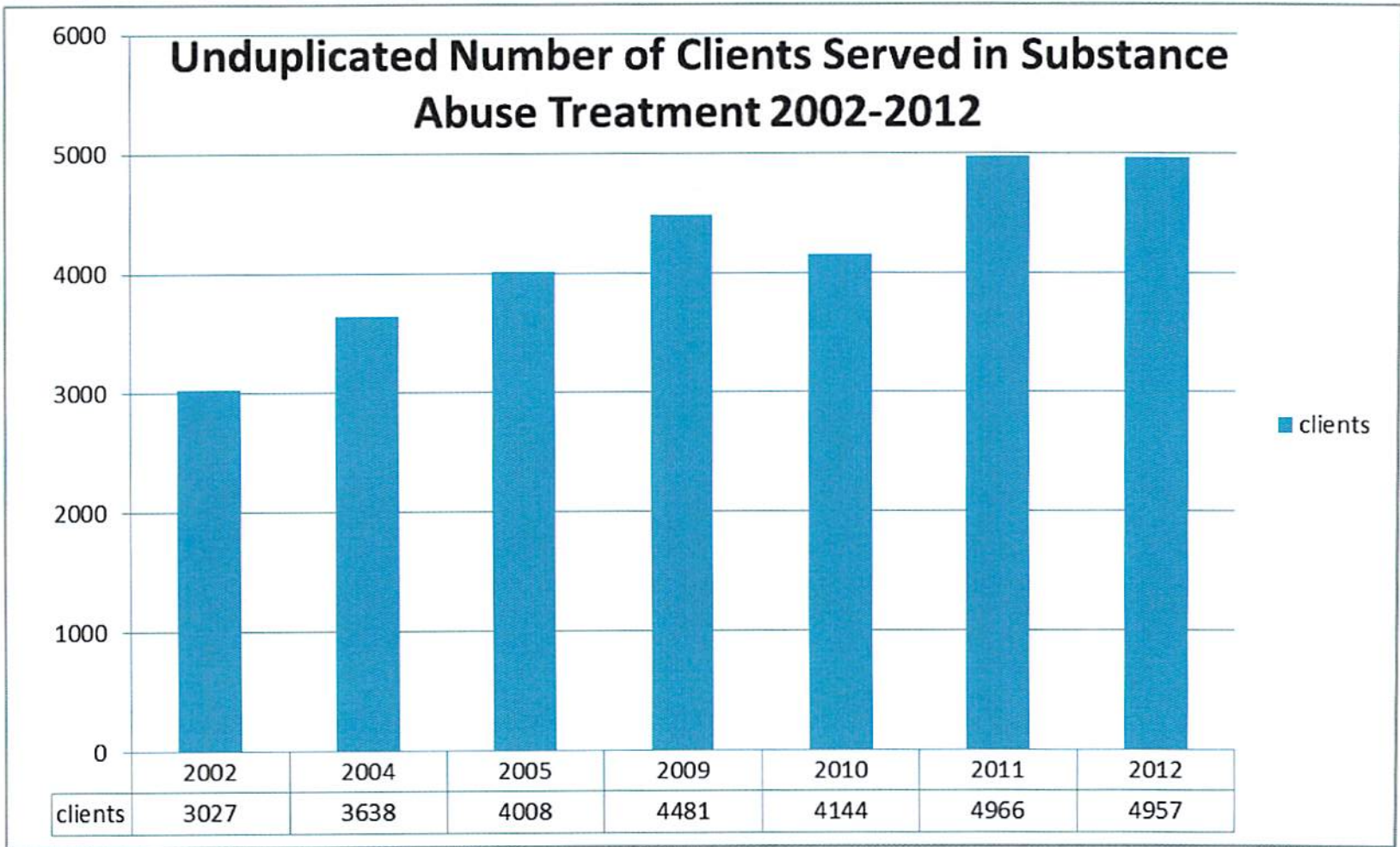


Department of Human Services Longitudinal Information - Behavioral Health - Substance Abuse & Mental Health

Behavioral Health Indicators used to identify chronic issues

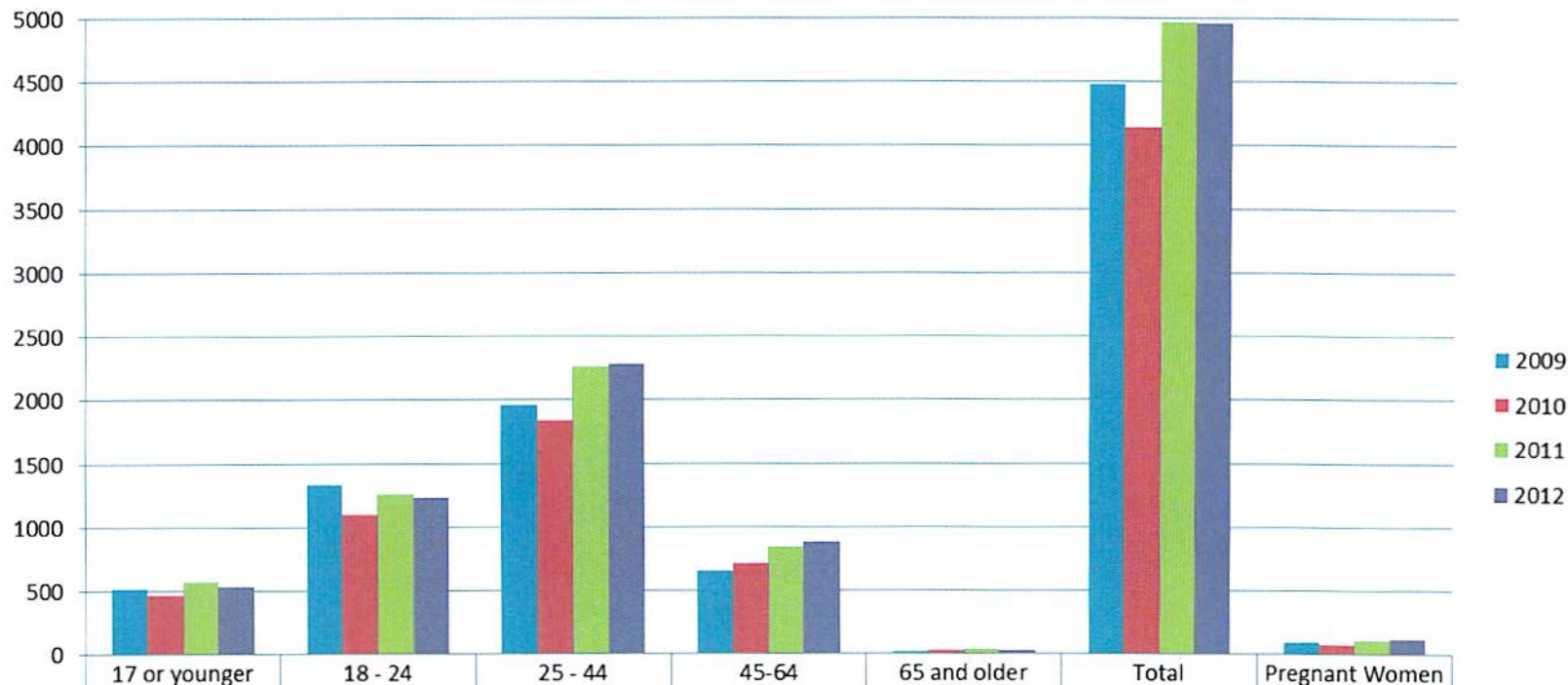


Human Services Legislative Committee
Presentation April 9, 2014



Source: ND DHS ROAP

Unduplicated Clients by Age Receiving Substance Abuse Treatment 2009 - 2012



| | 17 or younger | 18 - 24 | 25 - 44 | 45-64 | 65 and older | Total | Pregnant Women |
|--------|---------------|---------|---------|-------|--------------|-------|----------------|
| ■ 2009 | 512 | 1332 | 1961 | 657 | 19 | 4481 | 93 |
| ■ 2010 | 467 | 1100 | 1841 | 710 | 26 | 4144 | 76 |
| ■ 2011 | 568 | 1254 | 2260 | 847 | 33 | 4966 | 110 |
| ■ 2012 | 537 | 1234 | 2281 | 879 | 26 | 4957 | 121 |

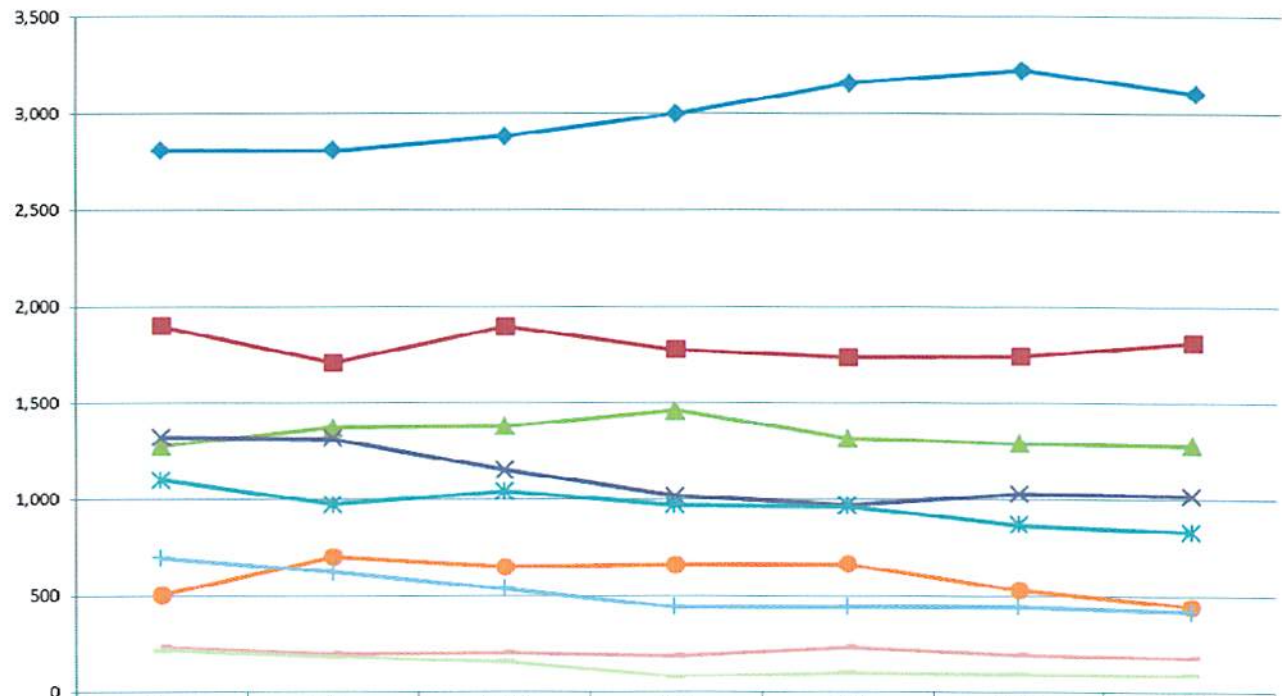
Source: ND DHS SAPT Block Grant

Unduplicated Clients Receiving Mental Health Services 2006 - 2013

| | 2006 | 2007 | 2008 | 2009 | 2010 | 2011 | 2012 | 2013 |
|---------------|--------------|--------------|--------------|--------------|--------------|--------------|--------------|--------------|
| 0-12 years | 1230 | 1319 | 1500 | 1434 | 1514 | 1697 | 1586 | 1579 |
| 13 - 17 | 1732 | 1875 | 1656 | 1619 | 1674 | 1805 | 1666 | 1559 |
| 18 - 20 | 1033 | 1098 | 900 | 890 | 993 | 961 | 951 | 926 |
| 21-64 | 10127 | 10460 | 10774 | 10984 | 11600 | 12113 | - | - |
| 21-24 | - | - | - | - | - | - | 1411 | 1415 |
| 25-44 | - | - | - | - | - | - | 6064 | 6381 |
| 45-64 | - | - | - | - | - | - | 4604 | 4619 |
| 65-74 | 328 | 355 | 477 | 527 | 509 | 514 | 550 | 609 |
| 75+ | 219 | 226 | 466 | 486 | 465 | 423 | 379 | 369 |
| Not Available | 2 | 160 | 487 | 653 | 476 | 384 | - | 395 |
| Total | 14671 | 15493 | 16260 | 16593 | 17231 | 17897 | 17596 | 17852 |

Department of Human Services-Regional Human Service Centers

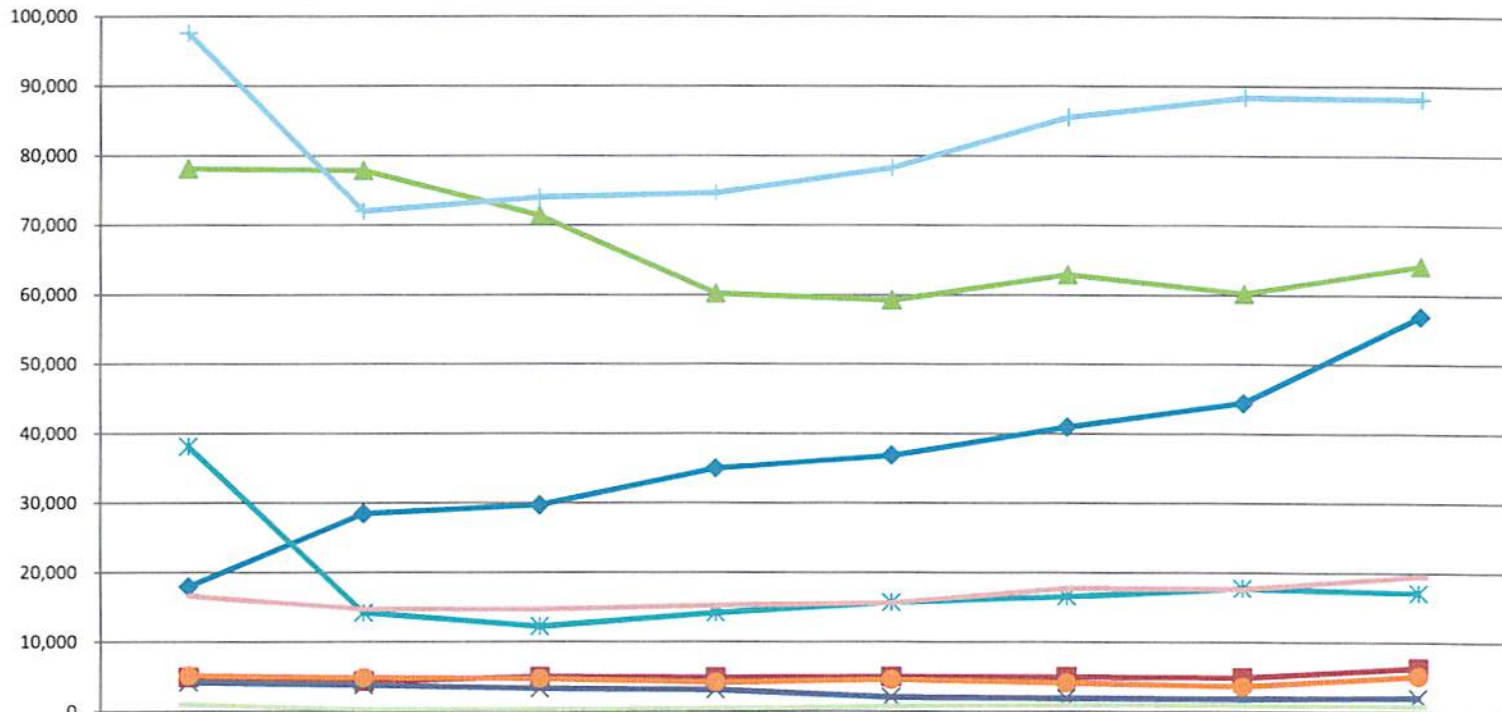
**Selected Client Referral Sources by Category-Substance Abuse & Mental Health Services
SFY 2006-2012**



| | 2006 | 2007 | 2008 | 2009 | 2010 | 2011 | 2012 |
|-------------------------------------|-------|-------|-------|-------|-------|-------|-------|
| Self Referred | 2,808 | 2,807 | 2,880 | 2,997 | 3,155 | 3,221 | 3,102 |
| Court/Law Enforcement | 1,897 | 1,707 | 1,895 | 1,775 | 1,736 | 1,743 | 1,811 |
| Family | 1,278 | 1,371 | 1,378 | 1,459 | 1,316 | 1,291 | 1,280 |
| Corrections | 1,322 | 1,313 | 1,150 | 1,019 | 968 | 1,028 | 1,019 |
| County Social Service Agency | 1,100 | 974 | 1,041 | 977 | 966 | 867 | 831 |
| Private Provider | 505 | 702 | 649 | 660 | 662 | 529 | 445 |
| Medical Provider | 606 | 620 | 535 | 443 | 442 | 442 | 418 |
| Alcohol/Drug Service Provider | 232 | 199 | 204 | 188 | 232 | 195 | 178 |
| State Hospital/Developmental Center | 219 | 179 | 156 | 81 | 100 | 96 | 88 |

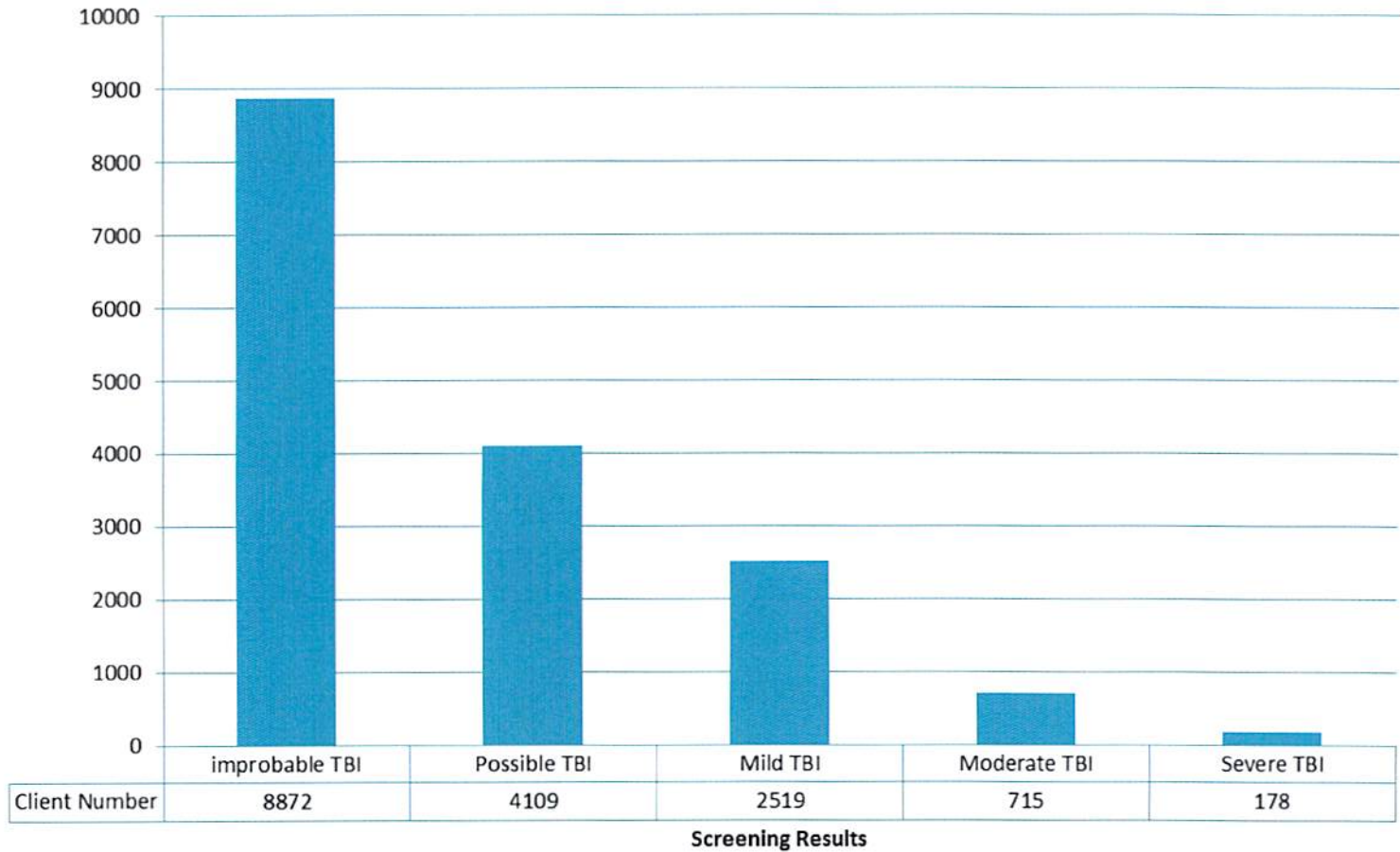
Source: ND DHS ROAP

Count of Selected Service Codes by SFY North Dakota SFYs 2006 - 2013



| | 2006 | 2007 | 2008 | 2009 | 2010 | 2011 | 2012 | 2013 |
|--------------------------|--------|--------|--------|--------|--------|--------|--------|--------|
| A&D Group Therapy | 17,954 | 28,461 | 29,688 | 35,010 | 36,899 | 40,997 | 44,458 | 56,914 |
| Addiction Evaluation | 4,917 | 4,330 | 4,966 | 4,882 | 4,992 | 4,991 | 4,895 | 6,337 |
| Case Mgmt - SMI Billable | 78,101 | 77,857 | 71,354 | 60,203 | 59,241 | 62,931 | 60,203 | 64,204 |
| FC Case Management | 4,193 | 3,796 | 3,297 | 3,124 | 2,080 | 1,936 | 1,883 | 2,043 |
| Group Therapy | 38,142 | 14,225 | 12,210 | 14,185 | 15,689 | 16,569 | 17,759 | 17,135 |
| Intake-Clinical/Dx Assmt | 5,092 | 4,840 | 4,727 | 4,190 | 4,599 | 4,156 | 3,641 | 5,170 |
| Nursing/Pharmacy Tech | 97,575 | 71,948 | 74,002 | 74,614 | 78,317 | 85,526 | 88,373 | 88,145 |
| SED Care Coordination | 16,624 | 14,705 | 14,674 | 15,228 | 15,648 | 17,753 | 17,653 | 19,505 |
| Social Detoxification | 987 | 283 | 302 | 453 | 761 | 985 | 972 | 871 |

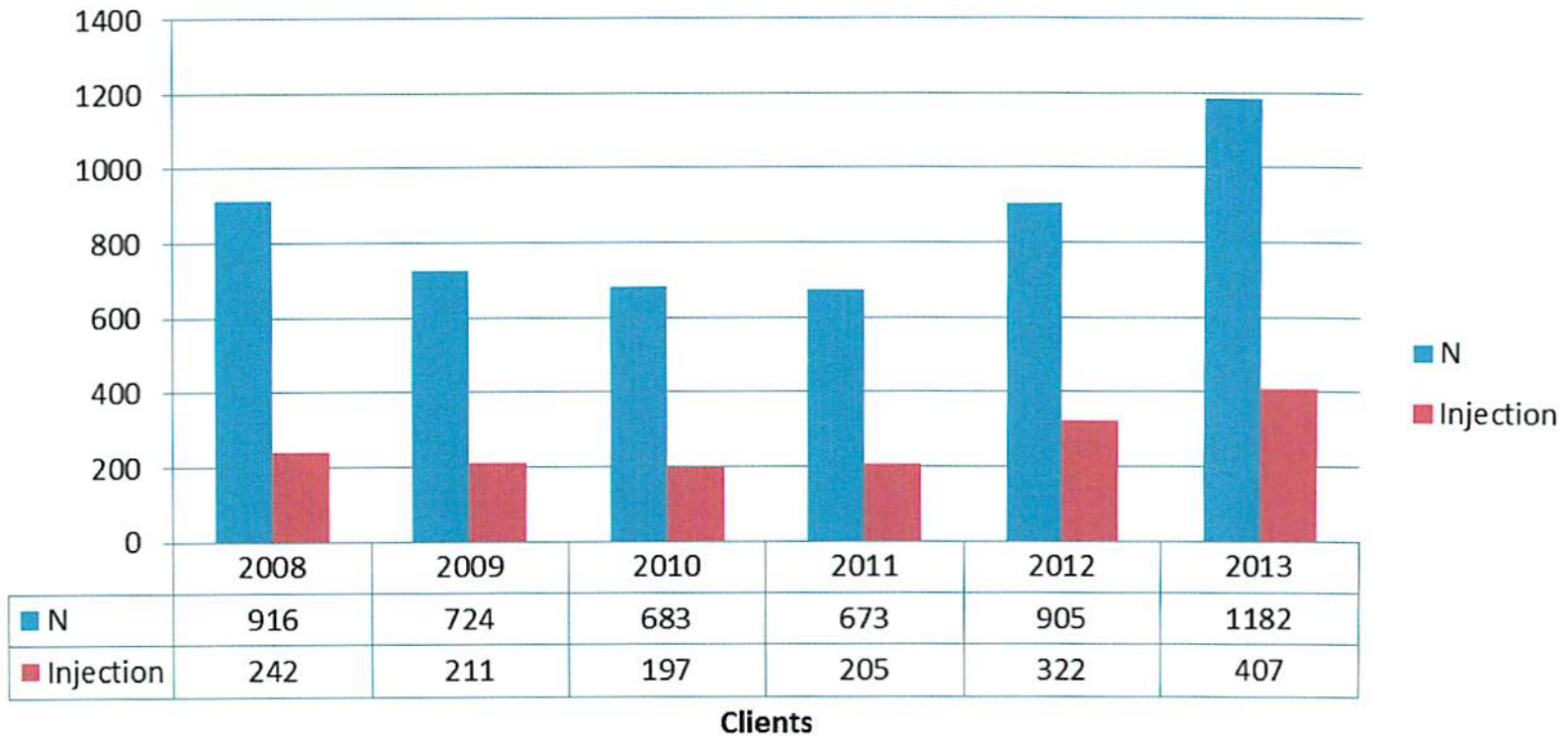
TBI Client Screening Results- March 2011 - 2012



- Traumatic Brain Injury (TBI) Screening now done on all admissions

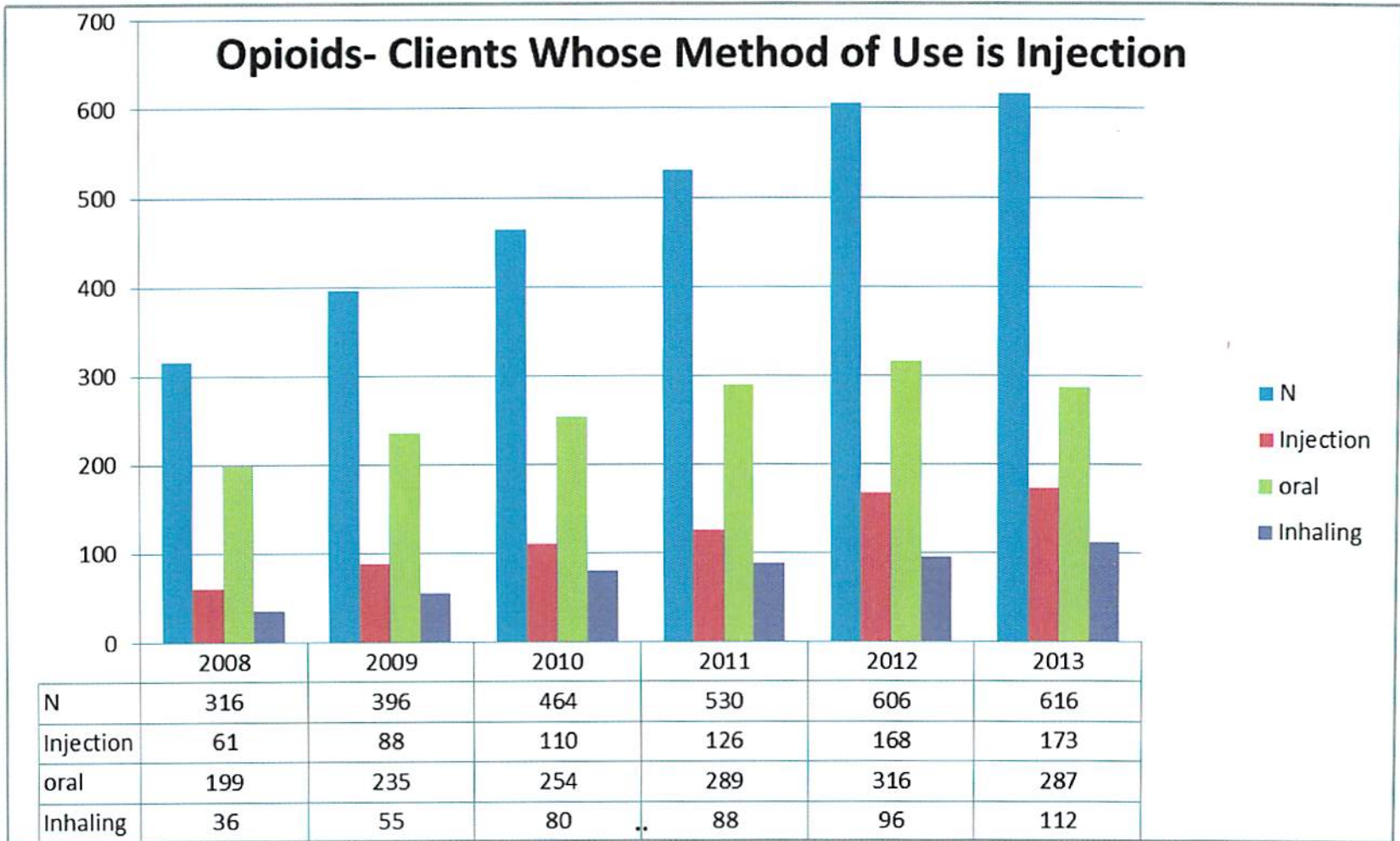
Source: ND DHS ROAP

Meth- Clients Whose Method of Use is Injection



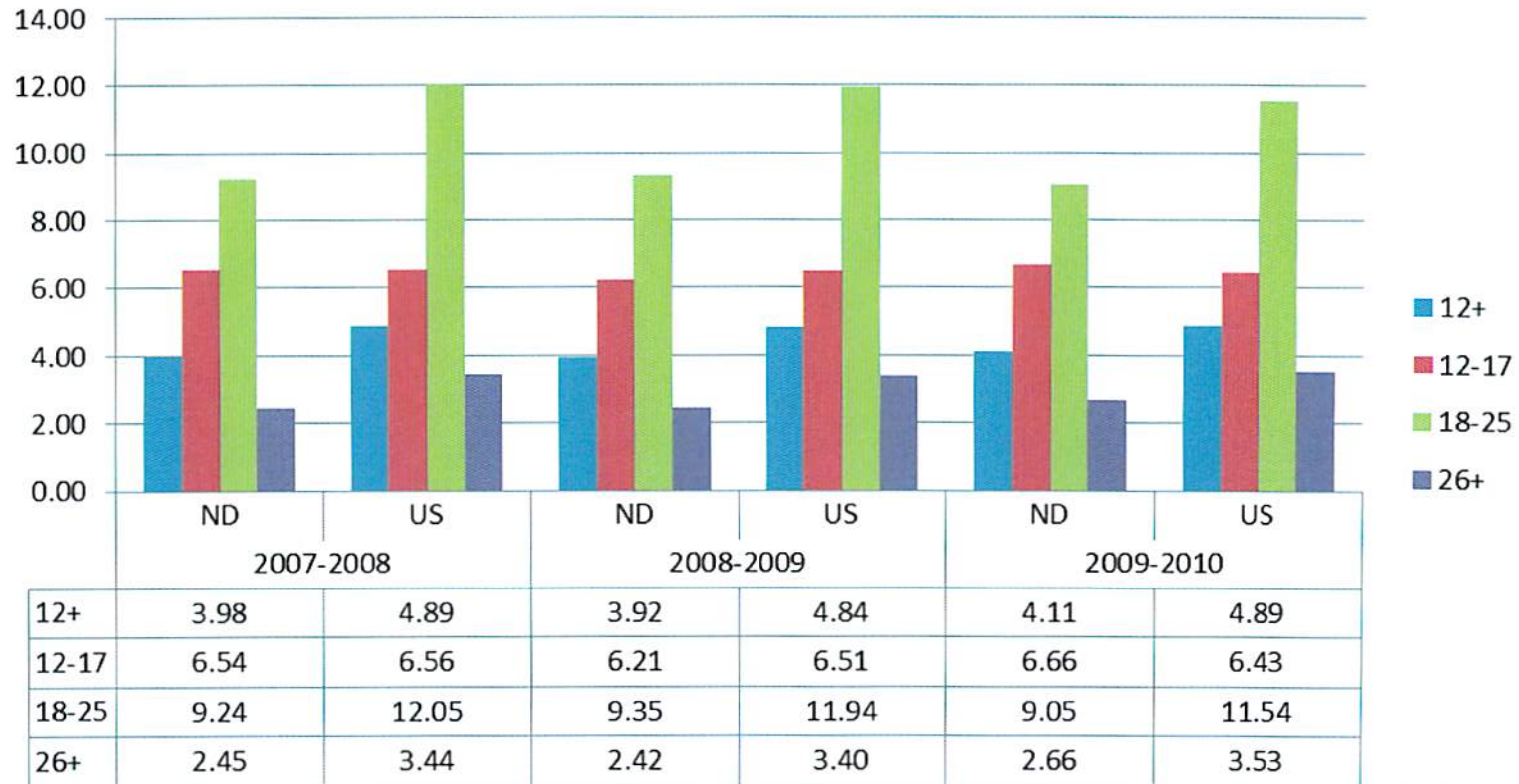
Source: ND DHS ROAP

Other methods reported: inhalation, oral, other, smoking



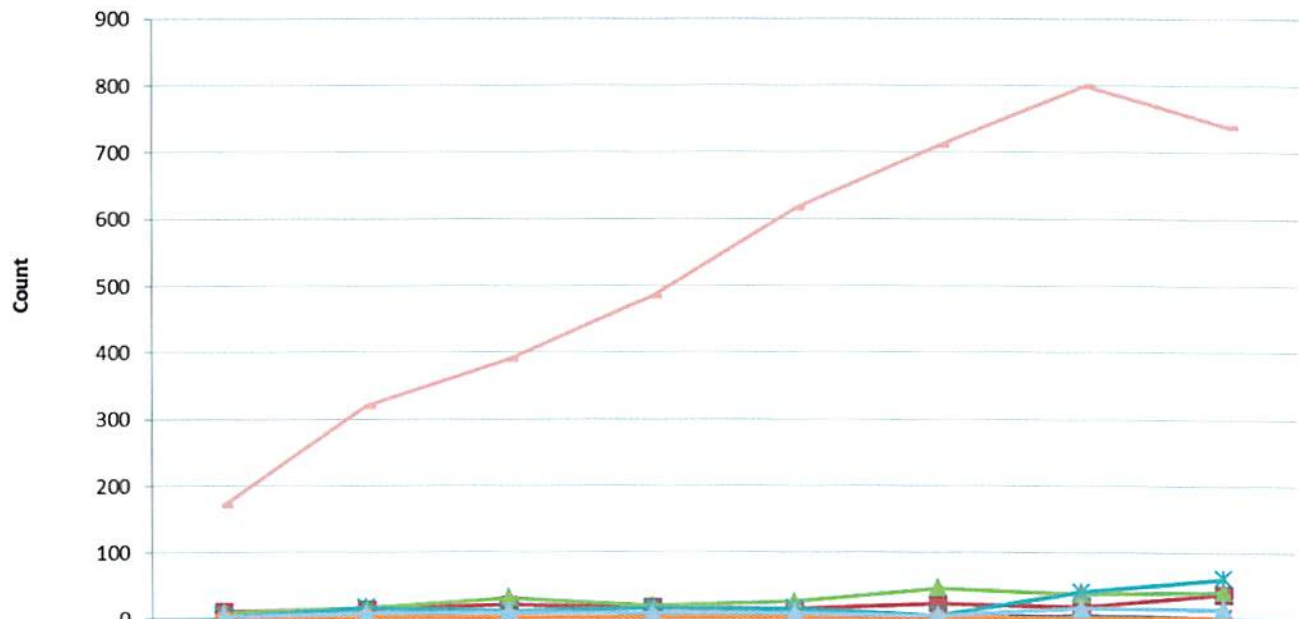
Source: ND DHS ROAP

Non-Medical Use of Prescription Drugs 2007-2010



Source: National Survey Drug Use and Health

Count of Selected Living Arrangements by SFY, Northwest Human Service Center SFYs 2006 - 2013



| | 2006 | 2007 | 2008 | 2009 | 2010 | 2011 | 2012 | 2013 |
|------------------------------|------|------|------|------|------|------|------|------|
| Assisted Living | 0 | 0 | 0 | 0 | 0 | 2 | 3 | 1 |
| Family Foster Care | 11 | 14 | 21 | 17 | 14 | 23 | 18 | 37 |
| Group/Residential Facility | 10 | 17 | 31 | 19 | 26 | 46 | 38 | 41 |
| Homeless Shelter | 0 | 5 | 2 | 2 | 1 | 2 | 5 | 2 |
| Jail/Correctional Facility | 4 | 17 | 11 | 17 | 15 | 5 | 40 | 61 |
| Nursing Home | 1 | 2 | 2 | 1 | 1 | 1 | 1 | 1 |
| With Extended Family | 3 | 8 | 10 | 8 | 8 | 5 | 16 | 15 |
| Own/Immediate Family Setting | 171 | 319 | 389 | 484 | 616 | 711 | 799 | 738 |

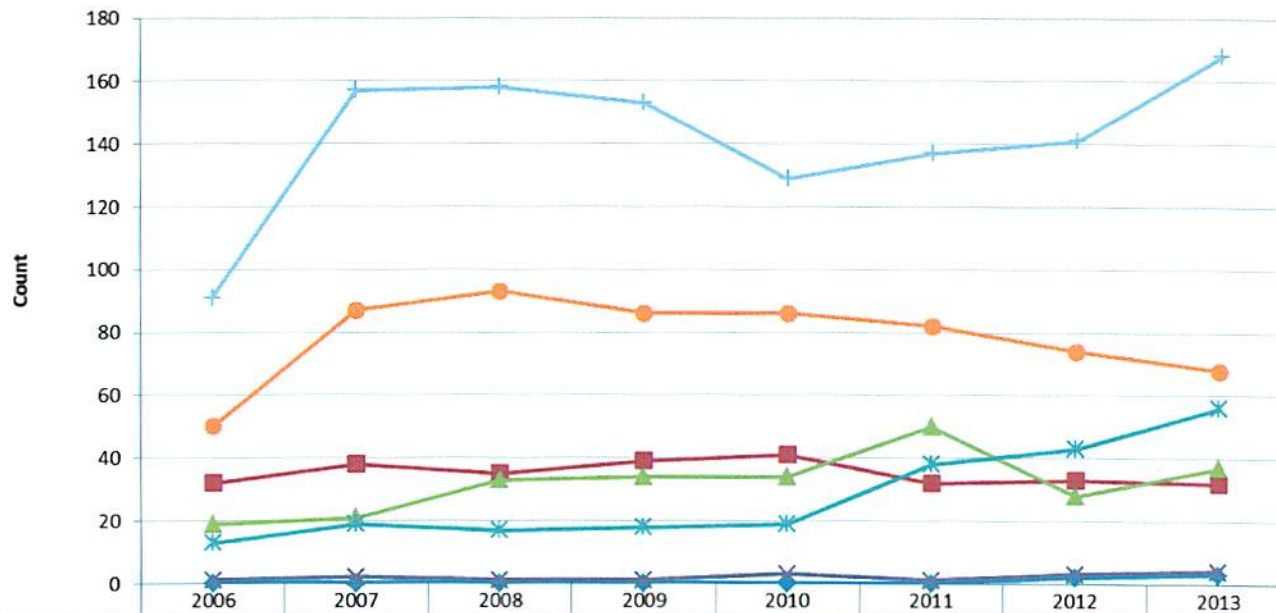
**Count of Selected Living Arrangements by SFY,
Excluding Own/Immediate Family Setting
Northwest Human Service Center
SFYs 2006 - 2013**



| | 2006 | 2007 | 2008 | 2009 | 2010 | 2011 | 2012 | 2013 |
|----------------------------|------|------|------|------|------|------|------|------|
| Assisted Living | 0 | 0 | 0 | 0 | 0 | 2 | 3 | 1 |
| Family Foster Care | 11 | 14 | 21 | 17 | 14 | 23 | 18 | 37 |
| Group/Residential Facility | 10 | 17 | 31 | 19 | 26 | 46 | 38 | 41 |
| Homeless Shelter | 0 | 5 | 2 | 2 | 1 | 2 | 5 | 2 |
| Jail/Correctional Facility | 4 | 17 | 11 | 17 | 15 | 5 | 40 | 61 |
| Nursing Home | 1 | 2 | 2 | 1 | 1 | 1 | 1 | 1 |
| With Extended Family | 3 | 8 | 10 | 8 | 8 | 5 | 16 | 15 |

Source: ND DHS ROAP

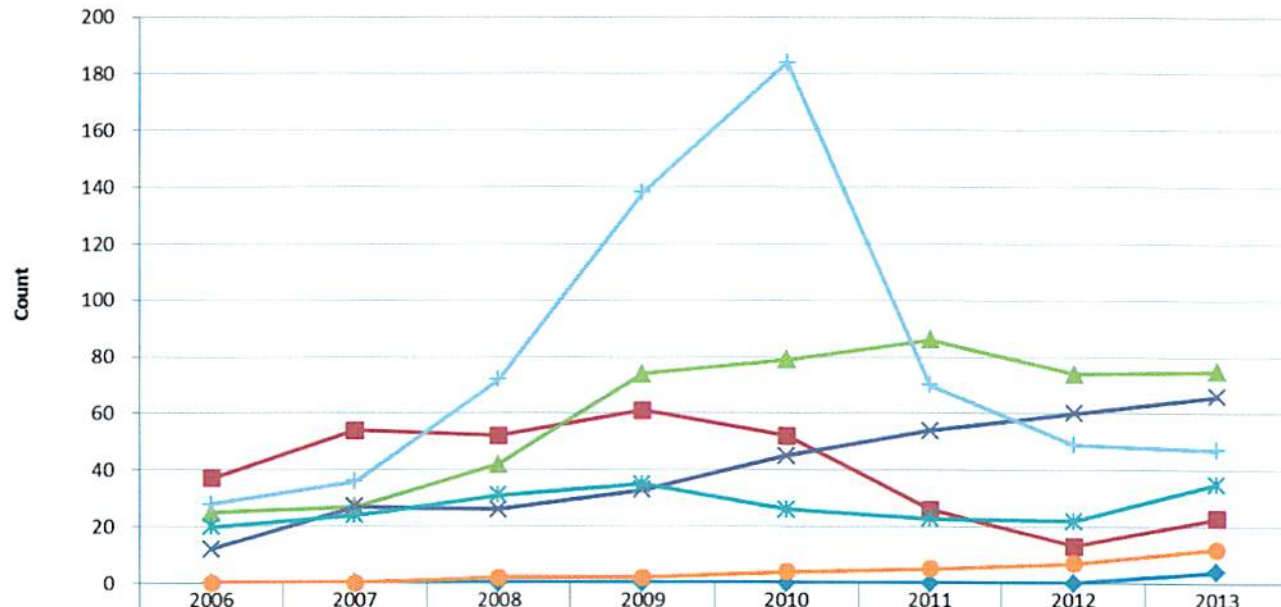
**Count of Selected Living Arrangements by SFY,
Excluding Own/Immediate Family Setting
Lake Region Human Service Center
SFYs 2006 - 2013**



| | 2006 | 2007 | 2008 | 2009 | 2010 | 2011 | 2012 | 2013 |
|----------------------------|------|------|------|------|------|------|------|------|
| Assisted Living | 0 | 0 | 0 | 0 | 0 | 0 | 2 | 3 |
| Family Foster Care | 32 | 38 | 35 | 39 | 41 | 32 | 33 | 32 |
| Group/Residential Facility | 19 | 21 | 33 | 34 | 34 | 50 | 28 | 37 |
| Homeless Shelter | 1 | 2 | 1 | 1 | 3 | 1 | 3 | 4 |
| Jail/Correctional Facility | 13 | 19 | 17 | 18 | 19 | 38 | 43 | 56 |
| Nursing Home | 50 | 87 | 93 | 86 | 86 | 82 | 74 | 68 |
| With Extended Family | 91 | 157 | 158 | 153 | 129 | 137 | 141 | 168 |

Source: ND DHS ROAP

**Count of Selected Living Arrangements by SFY,
Excluding Own/Immediate Family Setting
Northeast Human Service Center
SFYs 2006 - 2013**



| | | | | | | | | |
|------------------------------|----|----|----|-----|-----|----|----|----|
| ◆ Assisted Living | 0 | 0 | 0 | 0 | 0 | 0 | 0 | 4 |
| ■ Family Foster Care | 37 | 54 | 52 | 61 | 52 | 26 | 13 | 23 |
| ▲ Group/Residential Facility | 25 | 27 | 42 | 74 | 79 | 86 | 74 | 75 |
| × Homeless Shelter | 12 | 27 | 26 | 33 | 45 | 54 | 60 | 66 |
| * Jail/Correctional Facility | 20 | 24 | 31 | 35 | 26 | 23 | 22 | 35 |
| ● Nursing Home | 0 | 0 | 2 | 2 | 4 | 5 | 7 | 12 |
| ◆ With Extended Family | 28 | 36 | 72 | 138 | 184 | 70 | 49 | 47 |

Source: ND DHS ROAP