



**North Dakota Office of State Tax Commissioner**  
**Cory Fong, Tax Commissioner**

# **Motor Fuels**

## **EDI Implementation Guide**

June 2004  
Updated: November 2007

ANSI ASC X12 V.4030

(Adapted from the FTA Electronic Combined  
Reporting Methods Implementation Guide)





# Table of Contents

---

<b>Chapter 1 - Introduction.....</b>	<b>1-4</b>
General Information .....	1-4
Advantages .....	1-4
Contact Information.....	1-4
Understanding EDI.....	1-5
EDI 813 Version.....	1-5
EDI File Structure.....	1-5
EDI Filing - Reports .....	1-6
EDI Timely Filing .....	1-6
EDI Filing Procedures .....	1-6
FTA Review .....	1-7
<b>Chapter 2 - Motor Fuels X12 Data Model.....</b>	<b>2-8</b>
<b>Chapter 3 – X12 Attribute and Separator Conventions .....</b>	<b>3-9</b>
<b>Chapter 4 – X12 EDI Envelope .....</b>	<b>4-10</b>
Envelope Flows .....	4-10
Interchange Control Header Description .....	4-11
Functional Group Header Description.....	4-12
Functional Group Trailer Description .....	4-12
Interchange Control Trailer Description.....	4-12
<b>Chapter 5 - 813 EDI Combined Reporting .....</b>	<b>5-13</b>
ANSI ASC X12 – 813 EDI Standard .....	5-13
813 Structure .....	5-15
813 Map Flow .....	5-16
813 EDI Map.....	5-17
<b>Transaction Set Header Description.....</b>	<b>5-18</b>
<b>Transaction Set - Terminal Operator Report (TOR).....</b>	<b>5-24</b>
<b>Sequence ID Number Usage .....</b>	<b>5-24</b>
<b>Transaction Set - Supplier/Distributor Report (SDR) .....</b>	<b>5-27</b>
<b>Summary Information .....</b>	<b>5-30</b>
<b>North Dakota Summary Mapping .....</b>	<b>5-33</b>
<b>Schedules .....</b>	<b>5-35</b>
<b>Transaction Set Trailer Description .....</b>	<b>5-42</b>
<b>Appendix A - North Dakota Schedule Codes.....</b>	<b>A-57</b>
<b>Appendix B - North Dakota Product Codes.....</b>	<b>B-45</b>
<b>Appendix C - Summary Codes / TIA Codes .....</b>	<b>C-46</b>
<b>Appendix D - Transaction Type Mode Codes.....</b>	<b>D-48</b>
<b>Appendix E - USA States, Canadian Provinces/ Territories and Mexican States Codes..</b>	<b>E-49</b>
<b>Appendix F - E-File Registration .....</b>	<b>F-51</b>
<b>Appendix G - Amended Reports .....</b>	<b>G-53</b>

# Table of Contents

---

<b>Appendix H - Sample EDI Files .....</b>	<b>H-54</b>
Motor Vehicle Fuel Tax Report (SDR) .....	H-54
Motor Vehicle Fuel Tax Report (SDR) – No Activity (Zero Report) .....	H-55
Special Fuel Tax Report (SDR).....	H-56
Liquefied Petroleum Gas Tax Report (SDR).....	H-58
Aviation Fuel Tax Report (SDR).....	H-60
Terminal Operator Report (TOR).....	H-62

# Table of Contents

---

## References

### ASC X12

The Accredited Standards Committee  
Subcommittee - X12G – Government  
Task Group 2 (X12G/TG2)  
Tax Information Interchange Development  
TIGERS  
Web site: [www.x12.org](http://www.x12.org)

### ASC X12 Standards Manual

Publications Manager, Publications Department  
Data Interchange Standards Association (DISA)  
333 John Carlyle Street, Suite 600, Alexandria, VA 22314  
Phone: 703-548-7005 FAX: 703-548-5738  
E-mail: [publications@disa.org](mailto:publications@disa.org)  
Web site: [www.disa.org](http://www.disa.org)

### FTA Uniformity Guide

Motor Fuel Tax Section, Uniformity Project  
Federation of Tax Administrators (FTA)  
444 N. Capitol St., NW, Washington, DC 20001  
Contact: Cindy Anders-Robb  
Phone: (307) 632-4144 Fax: (307) 632-3234  
E-mail: [cindy.anders-robb@taxadmin.org](mailto:cindy.anders-robb@taxadmin.org)  
Web site: [www.taxadmin.org](http://www.taxadmin.org)

*It is recommended that you refer to the FTA Uniformity Guide to implement the Motor Fuels Uniformity methods.*

# Introduction

---

## Chapter 1 - Introduction

The North Dakota Office of State Tax Commissioner (Tax Commissioner) has implemented a mandatory electronic filing program. The following reports are included in the new electronic filing program:

- Motor Vehicle Fuel
- Special Fuels
- Liquefied Petroleum Gas
- Aviation Fuel Tax
- Terminal Operators

### ***General Information***

Electronic Data Interchange (EDI) is the electronic exchange of business documents from one company's computer to another company's computer in machine-processable formats. The direct, computer-to-computer exchange of business information reduces the expense associated with processing paper (opening envelopes, logging in of documents, etc.) as well as the costs, errors and time delays associated with data entry. Companies in industries of all kinds have found that EDI makes tremendous economic sense. Government agencies such as the Tax Commissioner naturally see the value in reducing the paper-intensive component of motor fuels taxation by implementing EDI.

### ***Advantages***

Using EDI will result in a reduction of paperwork and its associated costs.

EDI will eliminate postal delays and associated late filing penalties.

Fuel tracking will be computerized, giving the Tax Commissioner tools to reduce fraud, and therefore giving honest fuel distributors an even playing field.

Detailed audit trail of the tax report.

This EDI Implementation guide follows version 4030 of the EDI ANSI ASC X12 standards. This guide's purpose is to assist you in implementing and filing EDI for motor fuel reports.

### ***Contact Information***

EDI Coordinator:	Kevin Schatz
Phone:	(701) 328-3657
Fax:	(701) 328-1283
E-mail:	<i>kschatz@nd.gov</i>

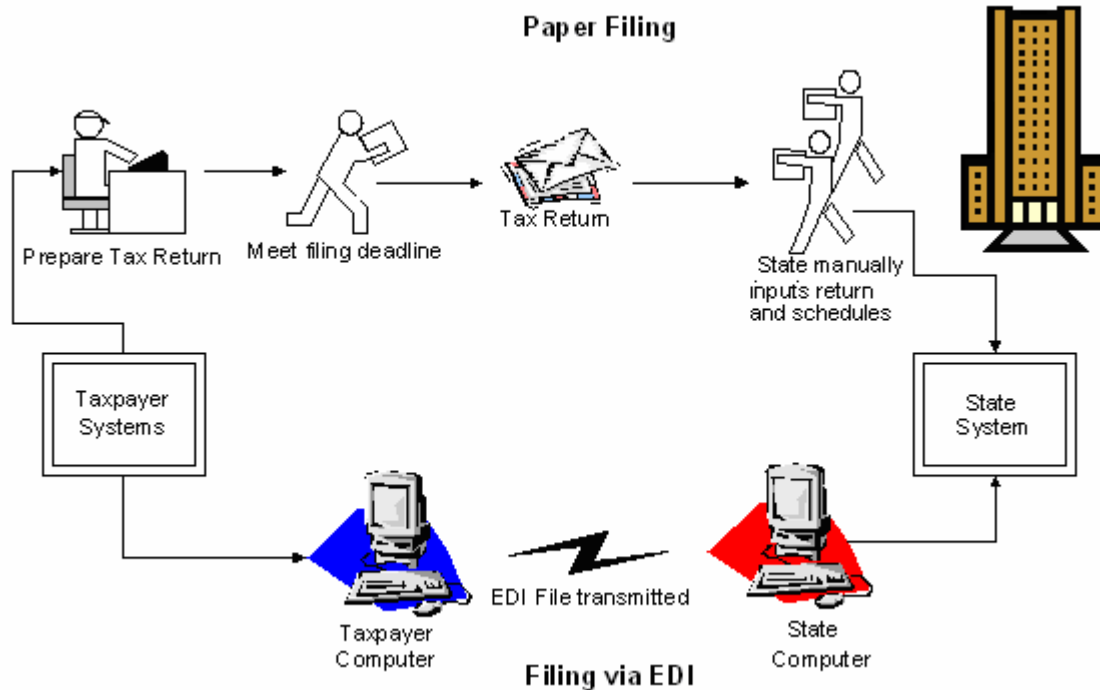
Note: All correspondence should be sent to the following address:

North Dakota Office of State Tax Commissioner  
Motor Fuels Tax Section  
600 E Boulevard Ave.  
Bismarck, ND 58505-0599

## Understanding EDI

EDI is used extensively in industry. For example, the retail and manufacturing industries cut purchase orders, send invoices, process shipping notifications, and make payments; all electronically. The time saved and accuracy gained using EDI gives businesses a competitive advantage, reducing lead-time, and vastly reducing data entry errors. It also reduces the need to store reams of paper documents for future reference.

EDI may seem complex, but once the basics are understood, the concept is really quite simple. As stated earlier, EDI is a method to electronically exchange business documents using a standard format. To facilitate this exchange of documents, two things are needed. First, the taxpayer (or trading partner) needs a method to send and receive electronic documents. Second, the taxpayer needs software to translate schedules and tax reports into the standard EDI format.



## EDI 813 Version

North Dakota is using the ANSI ASC X12 Version Release 004030 EDI standards for the EDI 813 (Electronic Filing of Tax Return Data) transaction set. Many states have implemented, or are planning on implementing, the EDI 813 for motor fuel tax filing. Previous releases of the EDI 813 transaction set allowed for individual state variations in EDI filing. Version 4030 promotes uniformity in motor fuel tax filing. As states migrate to the 4030 version, filers will be able to create a more generic EDI map, reducing the effort needed to track individual state variations.

## EDI File Structure

Each 813 (report) must be submitted with its own ST/SE loop (ST segment through SE segment). Multiple ST/SE loops can be submitted under one ISA envelope or each can be sent under a separate ISA envelope. Please remember, the ISA15 controls the test/production indicator; test and production reports cannot be combined under the same ISA envelope.

# Introduction

---

## ***EDI Filing - Reports***

The following reports may be filed via EDI:

- Special Fuels Tax Report
  - Special Fuel Schedule of Gallons Received
  - Special Fuel Schedule of Gallons Disbursed
- Liquefied Petroleum Tax Report
  - Liquefied Petroleum Schedule of Gallons Received
  - Liquefied Petroleum Schedule of Gallons Disbursed
- Motor Vehicle Fuel Tax Report
  - Motor Vehicle Fuel Schedule of Gallons Received
  - Motor Vehicle Fuel Schedule of Gallons Disbursed
- Aviation Fuel Tax Report
  - Aviation Fuel Schedule of Gallons Received
  - Aviation Fuel Schedule of Gallons Disbursed
- Terminal Operator Report
  - Terminal Operator Schedule of Receipts
  - Terminal Operator Schedule of Disbursements

## ***EDI Timely Filing***

The due date for filing your Motor Fuel Tax Report and Schedules via EDI is on or before the 25th day of the month following the month of activity. This means the EDI filing must be both transmitted and received by the Tax Commissioner on or before the 25th day of the month.

If a report due date falls on a holiday or weekend, the tax report is due no later than the first business day after the holiday or weekend. Timely reports are based on the date of receipt of the electronic report by the Tax Commissioner.

### **HOLIDAY SCHEDULE**

New Year's Day	January 1
Martin L. King Day	Third Monday in January
President's Day	Third Monday in February
Memorial Day	Last Monday in May
Independence Day	July 4
Labor Day	First Monday in September
Veteran's Day	November 11
Thanksgiving Day	Fourth Thursday in November
Christmas Day	December 25

NOTE: Office of State Tax Commissioner Holiday - When a legal holiday falls on a Sunday, it will be observed on the following Monday. When a legal holiday falls on a Saturday, it will be observed on the preceding Friday.

## ***EDI Filing Procedures***

- 1) A Registration Application for Electronic Filing must be submitted to the Tax Commissioner's office. The application must be signed by a person authorized to sign the tax reports. This signature is deemed to be the signature on all electronic reports. A copy of the Registration Application for Electronic Filing can be found in Appendix F.

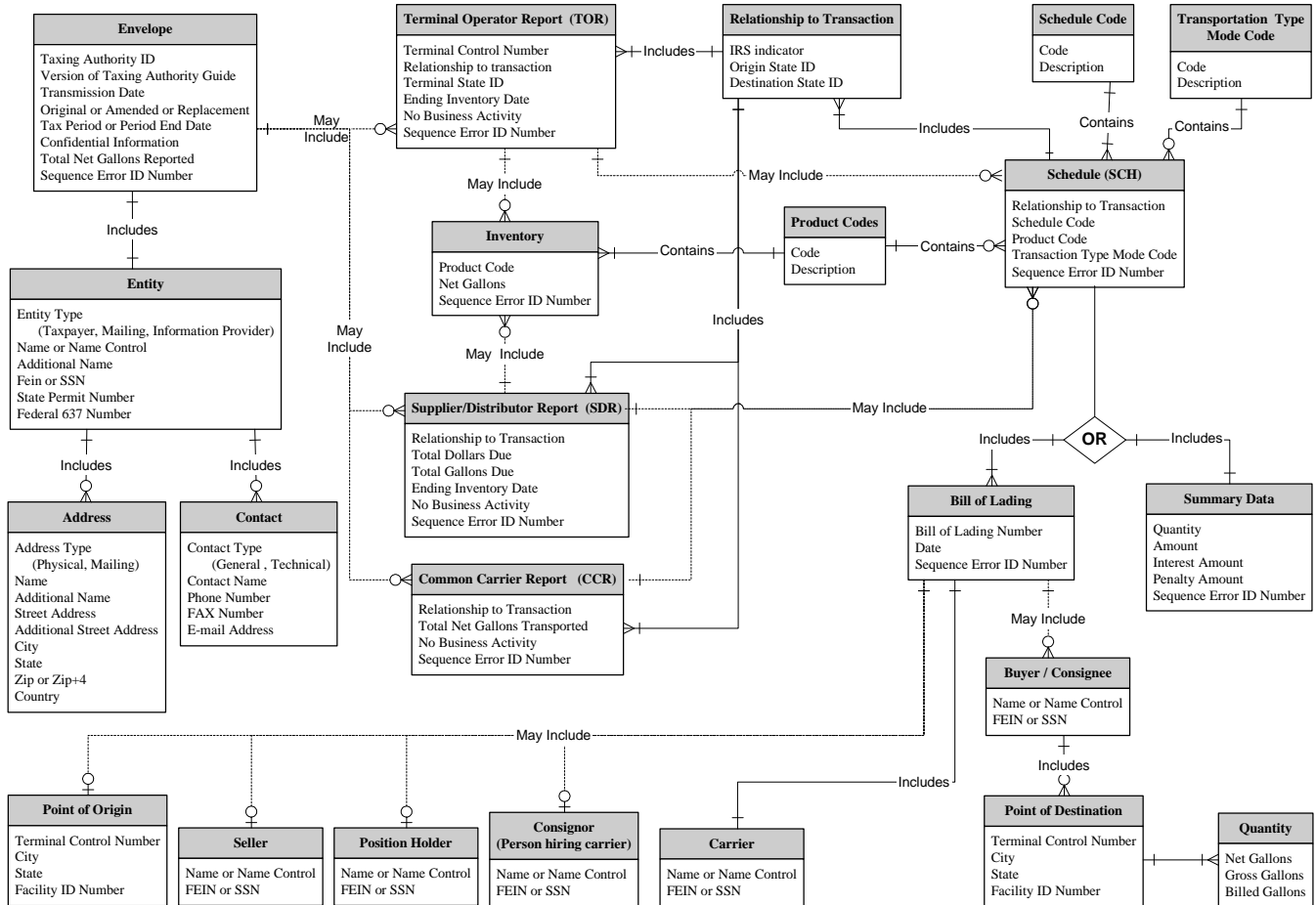
- 2) Registration for access to a secure web application for uploading files must be completed. Instructions and access to the secure web application can be found at <http://www.nd.gov/tax/fuel/electfiling/>. An authorization code to complete the registration process will be issued upon receipt of the Registration Application for Electronic Filing mentioned above.
- 3) A required testing process must be completed prior to submitting production files. Testing must be conducted for each report that you are required to submit (i.e., Motor Vehicle Fuels, Special Fuels, Aviation Fuels, LPG, and Terminal Operator). After completing the testing phase, you will be notified that you have been approved to file EDI production files.
- 4) To begin production reporting you will be required to change the ISA15 Test/Production indicator flag from T to P.
- 5) Use a file naming convention of your preference which will help you identify your EDI file stored for your records. When uploading a file to the secure web application, a confirmation number and file name message will be made available for you to print or record. The file name provided will be the naming convention assigned to the file by our office upon receipt by the secure web application based on reported information in the file.
- 6) Files uploaded to the secure web application are time stamped with the date and time of day. This time stamp is used by the processing database to determine if the reports were timely filed. Reports can be submitted 24 hours a day and will be timely if filed by midnight on the due date.
- 7) Payment for the tax can be made by check or by ACH Credit. A voucher must be submitted with a payment by check. Payment for multiple reports may be submitted on one check or multiple checks, however, a voucher must be submitted for each report. Vouchers are available at <http://www.nd.gov/tax/fuel/forms/>. ACH Credit instructions and information are available at <http://www.nd.gov/tax/fuel/electfiling/formsinstr.html>.
- 8) Whenever you make a significant change to your program, you should run another test with us to ensure accuracy and reliability.

### ***FTA Review***

This guide was submitted to the FTA Uniformity Committee for approval and in June, 2004, was found to be substantially compliant. The guide is compliant with FTA standards; with the exception of requiring a two-digit suffix on the FEIN reported in schedule detail.

# Introduction

## Chapter 2 - Motor Fuels X12 Data Model



# Chapter 3 – X12 Attribute and Separator Conventions

## Attributes

Attribute	Definition
Data Element Type	<p><b>Nn – Numeric</b> Numeric type data element is symbolized by the two-position representation (Nn). N indicates a numeric, and n indicates the decimal places to the right of a fixed, implied decimal point. N0 (N Zero) is a numeric with no decimal places.</p> <p><b>R – Decimal (Real)</b> The decimal point is optional for integer values, but is required for fractional values. For negative values, the leading minus (-) sign is used. Absence of this sign indicates a positive value. The plus (+) sign should not be transmitted.</p> <p><b>ID – Identifier</b> An identifier data element must always contain a value from a predefined list of values that is maintained by ASC X12 or by other bodies that are recognized by ASC X12.</p> <p><b>AN – String</b> A string (Alphanumeric) is a sequence of any characters from the basic or extended character sets. It must contain at least one non-space character. The significant characters must be left justified. Leading spaces, if any, are assumed to be significant. Trailing spaces should be suppressed.</p> <p><b>DT – Date</b> Format for the date type is CCYYMMDD. CC is the century digits of the year (ex. 19, 20). YY is the last two digits of the year (00-99), MM is the numeric value of the month (01-12), and DD for the day (01-31).</p> <p><b>TM – Time</b> Format for the time type is HHMMSS, expressed in 24-hour clock format. HH is the numeric value for hour (00-23), MM for minute (00-59), and SS for second (00-59).</p>
Requirement Designator	<p>Defines how the data element is used in a segment.</p> <p><b>M</b> Mandatory data element - This element is required to appear in the segment.</p> <p><b>O</b> Optional data element - The appearance of this data element is at the option of the sending party or is based on a mutual agreement of the interchange parties.</p> <p><b>X</b> Relational data element - Relational conditions may exist between two or more data elements. If one is present the other/s is required. The relational condition is displayed under the Syntax Noted of the X12 Standards.</p>
Data Element Length	The number of character positions assigned to a data element. Example: Data element length of 2/10. You must have at least 2 characters but no more than 10 characters for this element (minimum of 2/ maximum of 10).
Semantic Note Designator	<p><b>Z – Designator</b> A data element within a segment may have a designator (Z) that indicates the existence of a semantic note. Semantic notes are considered part of the standard. If a condition designator and a semantic note both affect a single data element, the condition will appear first, separated from the semantic note designator by a vertical bar ( ). The number 00 to the left of the comment identifies semantic notes that are general in nature.</p>

## Separator Requirements

Type	ASCII Value	EBCDIC Value	Character	Character Name
Repetition Separator	7C	4F		Pipe
Segment Terminator	5C	E0	\	Back Slash
Element Separator	7E	A1	~	Tilde
Sub-element Separator	5E	5F	^	Caret
Padding Character	20	40	Space	Space

## Chapter 4 – X12 EDI Envelope

### *Envelope Flows*

- ISA Interchange Control Header .....
  - GS Functional Group Header .....
  - 820 Transaction Set (ACH Payment) ..... *Max 1*  
    820 details are defined in this guide.
  - GE Functional Group Trailer .....
  - GS Functional Group Header .....
  - 813 Transaction Set (Combined Reporting) ..... *Max >1*  
    813 details are defined in this guide.
  - GE Functional Group Trailer .....
  - IEA Interchange Control Trailer .....
- 

- ISA Interchange Control Header .....
  - GS Functional Group Header .....
  - 826 Transaction Set (Tax Information Exchange) ..... *Max 1*  
    826 details are defined in this guide.
  - GE Functional Group Trailer .....
  - IEA Interchange Control Trailer .....
- 

- ISA Interchange Control Header .....
  - GS Functional Group Header .....
  - 151 Transaction Set (Electronic Filing of Tax Return Data Acknowledgement) ..... *Max 1*  
    151 details are defined in this guide.
  - GE Functional Group Trailer .....
  - IEA Interchange Control Trailer .....
- 

- ISA Interchange Control Header .....
- GS Functional Group Header .....
- 997 Transaction Set (Functional Acknowledgement) ..... *Max 1*  
    997 details are defined in this guide.
- GE Functional Group Trailer .....
- IEA Interchange Control Trailer .....

**Key:**

Not Used	<b>Not used: no data to transmit</b>
Syntax Notes	<b>Note: Notes defined by X12 Standards</b>
FTA Notes	<b>Note: Notes defined by FTA Uniformity</b>
ND Notes	<b>Note: Notes defined by the North Dakota Department of Revenue to further clarify the Department's requirements</b>
Struck-out Text	<b>Text, elements or entire segments that are struck out (example), are part of the Uniform map, but are not used by North Dakota</b>

**Interchange Control Header Description**

Interchange Segment								(Required)
Element ID	Elem Ref #	Sub-Ele Ref#	Field Status	Field Name	Field Type	Length		Field Description
						Min.	Max.	
ISA01	I01		M	Authorization Information Qualifier	ID	2	2	“00” = No Authorization Information Present (No Meaningful Information In Isa02)
ISA02	I02		M	Authorization Information	AN	10	10	Information used for additional identification or authorization of the interchange sender or the data in the interchange. Enter 10 Spaces
ISA03	I03		M	Security Information Qualifier	ID	2	2	“00” = No Security Information Present (No Meaningful Information In ISA 04)
ISA04	I04		M	Security Information	AN	10	10	This is used for identifying the security information about the interchange sender or the data in the interchange. Enter 10 spaces.
ISA05	I05		M	Interchange ID Qualifier	ID	2	2	“ZZ” = ID qualifier published by the sender used to designate the sender ID element being qualified.
ISA06	I06		M	Interchange Sender ID	AN	15	15	Filer FEIN plus two digit suffix, followed by 4 spaces
ISA07	I05		M	Interchange ID Qualifier	ID	2	2	“ZZ” = ID qualifier published by the receiver used to designate the receiver ID element being qualified.
ISA08	I07		M	Interchange Receiver ID	AN	15	15	‘ND0’ followed by 12 spaces
ISA09	I08		M	Interchange Date	DT	6	6	“YYMMDD” = Date Of The Interchange
ISA10	I09		M	Interchange Time	TM	4	4	“HHMM” = Time Of The Interchange
ISA11	I65		M	Repetition Separator		1	1	“ ” = EBCDIC - 4F HEX ASCII - 7C HEX
ISA12	I11		M	Interchange Control Version Number	ID	5	5	“00403”
ISA13	I12		M	Interchange Control Number	N0	9	9	The interchange control number uniquely identifies the interchange data to the sender. The sender assigns this number.
ISA14	I13		M	Acknowledgment Requested	ID	1	1	“0” = No Acknowledgment Required
ISA15	I14		M	Usage Indicator	ID	1	1	“P” = Production Data “T” = Test Data
ISA16	I15		M	Component Sub-Element Separator		1	1	“^” = EBCDIC – 5F HEX ASCII – 5E HEX
ISA~00~ ~00~ ~ZZ~12345678970 ~ZZ~ND0 ~080225~0835~ ~00403~00000001~0~T~^\\								
<b>Syntax Notes:</b>		<b>None</b>						
<b>FTA Note:</b>		<b>ISA09 does not include the century based on the ANSI ASC X12 Standard.</b>						
<b>ND Note:</b>		<b>ISA08 is formatted as ND0 (zero)</b>						

# X12 Conventions

## *Functional Group Header Description*

<b>Functional Group Segment</b>								<b>(Required)</b>
Element ID	Elem. Ref #	Sub-Ele Ref#	Field Status	Field Name	Field Type	Length		Field Description
						Min.	Max.	
GS01	479		M	Functional Identifier Code	ID	2	2	“TF” for 813 Transaction Set “FA” for 997 Transaction Set
GS02	142		M	Application Sender’s Code	AN	2	15	Code identifying party sending transmission. Code assigned by sender and agreed to by trading partner. Filer FEIN plus two digit suffix
GS03	124		M	Application Receiver’s Code	AN	2	15	Code identifying party receiving transmission. Code assigned by receiving and agreed to by trading partner. ‘ND813050CP’
GS04	373		M/Z	Date	DT	8	8	“CCYYMMDD” = Date
GS05	337		M/Z	Time	TM	4	8	“HHMMSSDD” = Time
GS06	28		M/Z	Group Control Number	N0	1	9	Assigned number originated and maintained by the sender.
GS07	455		M	Responsible Agency Code	ID	1	2	“X” = ASC X12
GS08	480		M	Version/ Release / Industry Identifier Code	AN	1	12	“004030”
GS~TF~12345678970~ND813050CP~20080225~0835~1101~X~004030\								
Syntax Notes: None								
FTA Note: None								

## *Functional Group Trailer Description*

<b>Functional Group Segment</b>								<b>(Required)</b>
Element ID	Elem Ref #	Sub-Ele Ref#	Field Status	Field Name	Field Type	Length		Field Description
						Min.	Max.	
GE01	97		M	Number Of Transaction Sets Included	N0	1	6	Count of transaction sets within this GS/GE.
GE02	28		M/Z	Group Control Number	N0	1	9	The data interchange control number in the trailer must be identical to the same data element in the associated functional header (GS06).
GE~1~1101\								
Syntax Notes: None								
FTA Note: None								

## *Interchange Control Trailer Description*

<b>Interchange Segment</b>								<b>(Required)</b>
Element ID	Elem Ref #	Sub-Ele Ref #	Field Status	Field Name	Field Type	Length		Field Description
						Min.	Max.	
IEA01	116		M	Number Of Included Functional Groups	N0	1	5	Count of Function Groups Within This ISA/IEA.
IEA02	112		M	Interchange Control Number	N0	9	9	The interchange number in the trailer must be identical to the same data element in the associated interchange header (ISA13).
IEA~1~00000001\								
Syntax Notes: None								
FTA Note: None								

# Chapter 5 - 813 EDI Combined Reporting

## ANSI ASC X12 – 813 EDI Standard

RELEASE • 004030

TRANSACTION SET TABLES • 813

### 813 Electronic Filing of Tax Return Data

FUNCTIONAL GROUP: TF

This Draft Standard for Trial Use contains the format and establishes the data contents of the Electronic Filing of Tax Return Data Transaction Set (813) for use within the context of an Electronic Data Interchange (EDI) environment. This transaction set can be used by tax filers to electronically file tax returns with a federal, state, or local taxing authority and which may initiate payments related to the tax return.

**Table 1**

NOTE	POS.NO.	SEG.ID	NAME	REQ.DES.	MAX USE	LOOP REPEAT
	0100	ST	Transaction Set Header	M	1	
	0200	BTI	Beginning Tax Information	M	1	
	0300	DTM	Date/Time Reference	M	10	
N	0400	TIA	Tax Information and Amount	O	1000	
	0430	REF	Reference Identification	O	10	
	0450	TRN	Trace	O	1000	
	0470	BPR	Beginning Segment for Payment Order/Remittance Advice	O	1000	
<b>LOOP ID - N1</b>						<b>&gt;1</b>
N	0500	N1	Name	O	1	
	0600	N2	Additional Name Information	O	2	
	0700	IN2	Individual Name Structure Components	O	10	
	0800	N3	Address Information	O	2	
	0900	N4	Geographic Location	O	1	
	1000	PER	Administrative Communications Contact	O	2	

**Table 2**

NOTE	POS.NO.	SEG.ID	NAME	REQ.DES.	MAX USE	LOOP REPEAT
<b>LOOP ID - TFS</b>						<b>100000</b>
	0100	TFS	Tax Form	O	1	
	0200	REF	Reference Identification	O	10	
	0300	DTM	Date/Time Reference	O	10	
	0400	MSG	Message Text	O	1000	
<b>LOOP ID - N1</b>						<b>&gt;1</b>
N	0500	N1	Name	O	1	
	0600	N2	Additional Name Information	O	2	
	0700	IN2	Individual Name Structure Components	O	10	
	0800	N3	Address Information	O	2	
	0900	N4	Geographic Location	O	1	
<b>LOOP ID - TIA</b>						<b>10000</b>
N	0920	TIA	Tax Information and Amount	O	1	
	0940	DTM	Date/Time Reference	O	10	
	0960	MSG	Message Text	O	1000	
<b>LOOP ID - FGS</b>						<b>100000</b>
	1000	FGS	Form Group	O	1	
	1100	REF	Reference Identification	O	10	
	1200	DTM	Date/Time Reference	O	10	
<b>LOOP ID - N1</b>						<b>&gt;1</b>
N	1300	N1	Name	O	1	

DECEMBER 1999

1

<sup>1</sup> Data Interchange Standards Association, Inc. (DISA)

813 • TRANSACTION SET TABLES

RELEASE • 004030

1400	<b>N2</b>	<u>Additional Name Information</u>	O	2		
1500	<b>IN2</b>	<u>Individual Name Structure Components</u>	O	10		
1600	<b>N3</b>	<u>Address Information</u>	O	2		
1700	<b>N4</b>	<u>Geographic Location</u>	O	1		
<b>LOOP ID - TIA</b>					<b>10000</b>	
N 1800	<b>TIA</b>	<u>Tax Information and Amount</u>	O	1		
1900	<b>DTM</b>	<u>Date/Time Reference</u>	O	10		
2000	<b>MSG</b>	<u>Message Text</u>	O	1000		

**Table 3**

NOTE	POS.NO.	SEG.ID	NAME	REQ.DES.	MAX USE	LOOP REPEAT
	0100	<b>SE</b>	<u>Transaction Set Trailer</u>	M	1	
Changes loop repeat value in table/positions 1/0500, 2/0500 and 2/1300.						6   205299

**NOTES**

- 1/0400 The TIA segment allows for tax information and amounts associated with the entire filing. At least one occurrence of the TIA segment must be present in the transaction set, either in Table 1 or Table 2.
- 1/0500 This N1 loop reflects names and addresses associated with the entire filing.
- 2/0500 This N1 loop reflects names and addresses associated with a particular tax form (TFS).
- 2/0920 At least one occurrence of the TIA segment must be present in the transaction set, either in Table 1 or Table 2.
- 2/1300 This N1 loop reflects names and addresses associated with a particular subset of a tax form.
- 2/1800 At least one occurrence of the TIA segment must be present in the transaction set, either in Table 1 or Table 2.

<sup>2</sup> Data Interchange Standards Association, Inc. (DISA)

## 813 Structure

Struck-out Text      Text, elements or entire segments that are struck out (**example**), are part of the Uniform map, but are not used by North Dakota

**Table1**

Pos No	Uniform 813 Map	Header
0100	<b>ST</b>	Transaction Set Header
0200	<b>BTI</b>	Identify Tax Agency Information
0300	<b>DTM</b>	Tax Filing Period
0400	<b>TIA</b>	Version of Taxing Authority's Implementation Guide
0400	<b>TIA</b>	Confidential Information
0400	<b>TIA</b>	Total Net Reported
0430	<b>REF</b>	Sequence ID Number
0500	<b>N1</b>	Taxpayer Name Detail
0600	<b>N2</b>	Additional Taxpayer Name Detail
0800	<b>N3</b>	Address Detail
0900	<b>N4</b>	City, State, Zip Code Detail
1000	<b>PER</b>	General Contact Person
1000	<b>PER</b>	EDI Contact Person
0500	<b>N1</b>	Mailing Name Detail
0600	<b>N2</b>	Additional Mailing Name Detail
0800	<b>N3</b>	Mailing Address Detail
0900	<b>N4</b>	Mailing City State Zip Code Detail

**Table 2**

Pos No	Uniform 813 Map	TOR	SDR	CCR	SUM	SCH
0100	<b>TFS</b>	Terminal Operator Report	Supplier/Distributor Report	<del>Common Carrier Report</del>	Summary Information	Schedules
0200	<del><b>REF</b></del>	<del>Relationship to the Transaction</del>	<del>Relationship to the Transaction</del>	<del>Relationship to the Transaction</del>	<del>Relationship to the Transaction</del>	<del>Relationship to the Transaction</del>
0200	<b>REF</b>	Sequence ID Number	Sequence ID Number	<del>Sequence ID Number</del>	Sequence ID Number	Sequence ID Number
0200	<b>REF</b>	No Activity	No Activity	<del>No Activity</del>		
0300	<b>DTM</b>	Ending Inventory Date	Ending Inventory Date			
0500	<b>N1</b>					Point of Origin
0500	<b>N1</b>					Seller Information
0500	<b>N1</b>					Position Holder Information
0500	<b>N1</b>					<del>Person Hiring Carrier (Consignor)</del>
0500	<b>N1</b>					Carrier Information
0500	<b>N1</b>					Buyer/Consignee Information
0500	<b>N1</b>					Point of Destination
0920	<b>TIA</b>		Total Due	<del>Total Delivered</del>		
1000	<b>FGS</b>	Physical Inventory by Product	Physical Inventory by Product		Summary Data	Bill of Lading
1100	<b>REF</b>	Sequence ID Number	Sequence ID Number		Sequence ID Number	Sequence ID Number
1200	<b>DTM</b>					Bill of Lading Date
1800	<b>TIA</b>	Physical Inventory	Physical Inventory		Information	Bill of Lading Net
1800	<b>TIA</b>				Interest	Bill of Lading Gross
1800	<b>TIA</b>				Penalty	Bill of Lading Billed

**Table 3**

Pos No	Uniform 813 Map	Trailer
0100	<b>SE</b>	Transaction Set Trailer

# 813 Map Flow

- 0100	ST	<b>Transaction Set Header (TS 813)</b>		Max 1
0200	BTI	Identify Tax Agency Information		
0300	DTM	Tax Filing Period		
0400	TIA	Version of Taxing Authority's Implementation Guide		
0400	TIA	Confidential Information		
0400	TIA	Total Net Reported		
0430	REF	Sequence Error ID Number		
-0500	N1 Loop	<b>Taxpayer Name Detail</b>		Max 1
0600	N2	Additional Taxpayer Name Detail		
0800	N3	Address Detail		
0900	N4	City, State, Zip Code Detail		
1000	PER	General Contact Person		
1000	PER	EDI Contact Person		
-0500	N1 Loop	<b>Mailing Name Detail</b>		Max 1
0600	N2	Additional Mailing Name Detail		
0800	N3	Mailing Address Detail		
0900	N4	Mailing City, State, Zip Code Detail		
0100	TFS Loop	<b>Terminal Operator Report (TOR)</b>		
0200	REF	Relationship to the Transaction Information		
0200	REF	Sequence Error ID Number		
0200	REF	No Activity		
0300	DTM	Ending Inventory Date		
-1000	FGS Loop	<b>Physical Inventory by Product</b>		Max 100,000
1100	REF	Sequence Error ID Number		
1800	TIA	Physical Inventory		
0100	TFS Loop	<b>Supplier/Distributor Report (SDR)</b>		
0200	REF	Relationship to the Transaction Information		
0200	REF	Sequence Error ID Number		
0200	REF	No Activity		
0300	DTM	Ending Inventory Date		
0920	TIA	Total Due		
-1000	FGS Loop	<b>Line Items From Face of Return not Derived From Schedules</b>		Max 100,000
1100	REF	Sequence Error ID Number		
1800	TIA	Line Item Detail		
0100	TFS Loop	<b>Common Carrier Report (CCR)</b>		
0200	REF	Relationship to the Transaction Information		
0200	REF	Sequence Error ID Number		
0200	REF	No Activity		
0920	TIA	Total Delivered		
0100	TFS Loop	<b>Summary Information</b>		
0200	REF	Relationship to the Transaction information		
0200	REF	Sequence Error ID Number		
-1000	FGS Loop	<b>Summary Data</b>		Max 100,000
1100	REF	Sequence Error ID Number		
1800	TIA	Information		
1800	TIA	Interest		
1800	TIA	Penalty		
0100	TFS Loop	<b>Schedules</b>		
0200	REF	Relationship to the Transaction information		
0200	REF	Sequence Error ID Number		
0500	N1	Point of Origin		
0500	N1	Seller Information		
0500	N1	Position Holder Information		
0500	N1	Person Hiring Carrier (Consignor)		
0500	N1	Carrier Information		
0500	N1	Buyer/Consignee Information		
0500	N1	Point of Destination		
-1000	FGS Loop	<b>Bill Lading</b>		Max 100,000
1100	REF	Sequence Error ID Number		
1200	DTM	Bill of Lading Date		
1800	TIA	Bill of Lading Net		
1800	TIA	Bill of Lading Gross		
1800	TIA	Bill of Lading Billed		
-0100	SE	<b>Transaction Set Trailer</b>		

Maximum Number of TFS Loops = 100,000

## ***813 EDI Map***

### **FTA Motor Fuel Tax Section Uniformity Committee**

The Combined Reporting map is based on Uniform Forms adopted by the Uniformity Committee of the Motor Fuel Tax Section of the Federation of Tax Administrators. This Map is consistent with ANSI ASC X12 version 4030 standards. Any taxing authority implementing EC programs is asked to utilize this document when mapping their motor fuel tax returns/reports.

**Key:**

Not Used	<b>Not used: no data to transmit</b>
Syntax Notes	<b>Note: Notes defined by X12 Standards</b>
FTA Notes	<b>Note: Notes defined by FTA Uniformity</b>
ND Notes	<b>Note: Notes defined by the North Dakota Department of Revenue to further clarify the Department's requirements</b>
Struck-out Text	<b>Text, elements or entire segments that are struck out (example), are part of the Uniform map, but are not used by North Dakota</b>

## Transaction Set Header Description

<b>Beginning of Transaction Set Header Segment</b>								<b>(Required) Pos. No. 0100</b>
Element ID	Elem Ref #	Sub-Ele Ref #	Field Status	Field Name	Field Type	Length		Field Description
						Min	Max	
ST01	143		M	Transaction Set Code	ID	3	3	Transaction Set Type "813"
ST02	329		M	Transaction Set Control Number	AN	4	9	Filer defined unique control number (same value as SE02)
ST03	1705		O/Z	Implementation Convention Reference	AN	1	5	Version of Taxing Authority's implementation Guide '1' = North Dakota Version 1
<b>ST~813~1001~1\</b>								
<b>Syntax Notes: None</b>								
<b>FTA Note: It is recommended that the ST03 be used to help identify which implementation guide the trading partner is using. This element will help the receiver of the data determine if the sender is using an old guide or the most current guide for the data transmission.</b>								
<b>ND Notes: North Dakota requires use of ST03</b>								

<b>Identify Tax Agency Information Begin Tax Information Segment</b>								<b>(Required) Pos. No. 0200</b>
Element ID	Elem Ref #	Sub-Ele Ref #	Field Status	Field Name	Field Type	Length		Field Description
						Min	Max	
BTI01	128		M	Reference Number Qualifier	ID	2	2	"T6" = Defines as Tax Filing
BTI02	127		M	Reference Number	AN	3	3	Determined by FTA "050" = All Fuels Tax Filings
BTI03	66		M	ID Code Qualifier	ID	2	2	"47" = Tax Authority
BTI04	67		M	ID Code	AN	2	20	Determined by Tax Authority 'ND'
BTI05	373		O	Transaction Create Date	DT	8	8	"CCYYMMDD" = Transmission Date
BTI06	818		O	Name Control ID	AN	4	4	First 4 positions of Taxpayer's Legal Business Name. If business name is less than 4 characters, left justify name control and pad with "*".
BTI07	66		X	ID Code Qualifier	ID	2	2	"24" = FEIN Federal Employer Identification Number "34" = Social Security Number
BTI08	67		X	ID Code	AN	9	15	Taxpayer's FEIN or SSN
BTI09	66		X	ID Code Qualifier	ID	2	2	"49" = State (assigned) Identification Number
BTI10	67		X	ID Code	AN	2	20	License or Permit Number
<del>BTI11</del>	<del>66</del>		<del>X</del>	<del>ID Code Qualifier</del>	<del>ID</del>	<del>2</del>	<del>2</del>	<del>"SV" = Electronic Filer ID Number</del>
<del>BTI12</del>	<del>67</del>		<del>X</del>	<del>ID Code</del>	<del>AN</del>	<del>9</del>	<del>15</del>	<del>State assigned Software Identification</del>
BTI13	353		O	Transaction Set Purpose Code	ID	2	2	Original Filing Options: "00" = Original
BTI14	640		O	Transaction Type Code	ID	2	2	Amended Filing Options: "CO" = Corrected
<b>BTI~T6~050~47~ND~20080125~ABCD~24~516999988~49~1234~~~00\</b>								

<b>Syntax Notes:</b>		If either BTI07 or BTI08 is present, then the other is required. If either BTI09 or BTI10 is present, then the other is required. If either BTI11 or BTI12 is present, then the other is required.
<b>FTA Notes:</b>		
BTI07 must be the FEIN if the taxpayer has one. Submit a SSN only for sole proprietorships that have not been issued a FEIN.		
The application of BTI13 and BTI14 are as follows: BTI13 should be used when the taxpayer transmits their initial report (BTI13 should be used without BTI14); BTI14 should be used when the taxpayer transmits modifications (BTI14 should be used without BTI13). This is a recommendation of the Motor Fuel Uniformity Committee, not a requirement of X12. Further clarification of these elements is located below.		
<b>Element</b>	<b>Application</b>	
BTI13 [Initial Report]		
“00” = Original	Use “Original” when first attempting to transmit your report to the department whether the report is received or not. Always use “00” until the original report is received.	
“05” = Replace	Use “Replace” when first attempt of transmitted return had corrupted data.	
“15” = Resubmission	Use “Resubmission” when the Department did not receive first attempt of your transmitted return.	
BTI14 [Amended Report]		
“CO” = Corrected	Use “Corrected” when adjusting or correcting original or amended report.	
“6R” = Resubmission	Use “Resubmission” when first attempt to transmit amended return was not received by the Department.	
“6S” = Supplemental	Use “Supplemental” when transmitting new or additional data not included in original or amended report.	

<b>Tax Filing Period</b>							<b>(Required)</b>	
<b>Date/Time Reference Segment</b>							<b>Pos. No. 0300</b>	
Element ID	Elem Ref #	Sub-Ele Ref #	Field Status	Field Name	Field Type	Length		Field Description
						Min	Max	
DTM01	374		M	Date/Time Qualifier	ID	3	3	“194” = Tax Period End Date
DTM02	373		X	Date	DT	8	8	“CCYYMMDD” = Tax Filing Period End
<b>DTM03 and DTM04 are not used.</b>								
DTM05	1250		X	Date Time Period Format Qualifier	ID	3	3	“RD8” = Range of Dates
DTM06	1251		X	Date Time Period	AN	17	17	“CCYYMMDD-CCYYMMDD” = Tax Filing Period Beginning and Ending Dates.
DTM~194~200080131\								
<b>Syntax Notes:</b> At least one of DTM02 or DTM05 is required. If either DTM05 or DTM06 is present, then the other is required.								
<b>FTA Notes:</b> If qualifier “194” is used in DTM01, then DTM05 and DTM06 are not used. If qualifier “683” is used in DTM01, then DTM02 is not used.								

<b>Confidential Data</b>								
<b>Tax Information and Amount Segment</b>							<b>Pos. No. 0400</b>	
Element ID	Elem Ref #	Sub-Ele Ref #	Field Status	Field Name	Field Type	Length		Field Description
						Min	Max	
TIA01	817		M	Tax Information Code	AN	4	4	“5010” = Confidential Information
<b>TIA02 is not used.</b>								
TIA03	449		X	Fixed Format Information	AN	4	5	User defined: Example: “6103” = IRS 6103B Tax data.
TIA~5010~6103\								
<b>Syntax Notes:</b> TIA03 is required.								
<b>FTA Notes:</b> This segment is used only between the states and the IRS								

Total Net Reported									Pos. No. 0400	
Tax Information and Amount Segment										
Element ID	Elem Ref #	Sub-Ele Ref #	Field Status	Field Name	Field Type	Length		Field Description		
						Min	Max			
TIA01	817		M	Tax Information Code	AN	4	4	"5001" = Total Net Reported		
<b>TIA02 and TIA03 are not used.</b>										
TIA04	380		X	Quantity	R	1	15	Total Number of Net Gallons in Tax Filing		
TIA05	355		M	Unit of Measurement Code	ID	2	2	"GA" = Gallons		
TIA~5001~~~1000000~GA\										
Syntax Notes: TIA04 is required. If TIA05 is present, then TIA04 is required.										
FTA Notes: Even though this value can be calculated, it is included, as a control figure to verify that the amount calculated by the Tax Authority is the same as expected by the taxpayer.										
ND Notes: This is the sum of gross gallons (+/-) across all schedules in the tax filing										

Sequence ID Number									Pos. No. 0200	
Reference Number Segment										
Element ID	Elem Ref #	Sub-Ele Ref #	Field Status	Field Name	Field Type	Length		Field Description		
						Min	Max			
REF01	428		M	Reference Identification Qualifier	ID	2	2	"FJ" = Sequence ID Number		
REF02	427		X	Reference Identification	AN	4	7	Sequence Number		
REF03	352		X	Description	AN	4	5	Error Response Code		
REF~55~01234\										
Syntax Notes: At least one of the REF02 or REF03 is required.										
FTA Notes: This segment is only used when resending to an error reported in the 151 transaction set. REF02 is always required. REF03 is used for resending to an error										

Payment Order Remittance Advice									(Required)	
Beginning Segment									Pos. No. 0200	
Element ID	Elem Ref #	Sub-Ele Ref #	Field Status	Field Name	Field Type	Length		Field Description		
						Min	Max			
BPR01	305		M	Transaction Handling Code	ID	4	2	"S" = Single Debit Authorization "P" = Pre-notification		
BPR02	782		M	Monetary Amount	R	4	18	Amount of tax payment		
BPR03	478		M	Credit/Debit Flag Code	ID	4	4	"D" = Debit		
BPR04	594		M	Payment Method Code	ID	3	3	"ACH" = Automated Clearing House		
BPR05	812		M	Payment Format Code	ID	3	3	"CCD" = Cash Contraction/Disbursement "CCP" = Cash Concentration/Disbursement plus Addenda (CCD+)		
<b>BPR06 through BPR11 are not inserted by the taxpayer. They are on file with the party that creates the ACH Debit transaction. The taxpayer transmits empty fields for these elements.</b>										
BPR06	506		X/Z	(ODFI) ID Number Qualifier	ID	2	2	"01" = ABA Transit Routing Number and Check Digits		
BPR07	507		X	(ODFI) Identification Number	AN	3	12	State's Bank Routing and Transit Number		
BPR08	569		O/Z	(ODFI) Account Number Qualifier	ID	4	3	"DA" = Demand Deposit "SG" = Savings		
BPR09	508		X/Z	(ODFI) Account Number	AN	4	25	State's Bank Account Number to be Credited		
BPR10	509		Θ	Originating Company Identifier	AN	10	10	State ID Example: Taxing Authority's DUNS Number		
BPR11	510		Θ	Originating Company Supplemental Code	Θ	9	9	Code Identifying Fiscal Agent		
BPR12	506		X/Z	(RDFI) ID Number Qualifier	ID	2	2	"01" = ABA Transit Routing Number and Check Digits		
BPR13	507		X	(RDFI) Identification Number	AN	3	12	Taxpayer's Bank Routing and Transit Number		
BPR14	569		O/Z	(RDFI) Account Number Qualifier	ID	4	3	"DA" = Demand Deposit "SG" = Savings		
BPR15	508		X/Z	(RDFI) Account Number	AN	4	35	Taxpayer's Bank Account to be Debited		
BPR16	373		O/Z	Date	DT	8	8	The intended payment effective date (CCYYMMDD)		

BPR17	4048		Q/Z	Business Function Code	ID	+	3	"TAX" = Tax Payment
<del>BPR-S-500-D-ACH-CCD-01-123456789-DA-987654321-20010325-TAX\</del>								
Syntax Notes: If either BPR06 or BPR07 is present, then the other is required. If BPR08 is present, then BPR09 is required. If either BPR12 or BPR13 is present, then the other is required. If BPR14 is present, then BPR15 is required.								
FTA Notes: This segment should not be mandated by a taxing authority.								
ODFI (Originating Depository Financial Institution) is the bank that creates the ACH transaction. For debit transactions, this is the state's Bank.								
RDFI (Receiving Depository Financial Institution) is the bank that accepts the ACH transaction. For debit transactions, this is the Taxpayer's Bank.								

<b>Name Detail</b>								<b>Pos. No. 0500</b>	
<b>Name Segment</b>									
Element ID	Elem Ref #	Sub-Ele Ref #	Field Status	Field Name	Field Type	Length		Field Description	
						Min	Max		
N101	98		M	Entity Identification Code	ID	2	2	"TP" = Primary Taxpayer	
N102	93		X	Name	AN	1	35	Taxpayer Name	
N1~TP~ABC Distributing\									
Syntax Notes: N102 is required.									
FTA Note: N101: Use "TP" for tax reporting, or "L9" for information reporting.									

<b>Additional Taxpayer Name Detail</b>								<b>Pos. No. 0600</b>	
<b>Additional Name Segment</b>									
Element ID	Elem Ref #	Sub-Ele Ref #	Field Status	Field Name	Field Type	Length		Field Description	
						Min	Max		
N201	93		M	Name	AN	1	35	Taxpayer Name	
N202	93		Q	Name	AN	1	35	Taxpayer Name	
N2~ABC Fuel Company~ABC Station\									
Syntax Notes: None									
FTA Note: None									

<b>Address Detail</b>								<b>Pos. No. 0800</b>	
<b>Address Information Segment</b>									
Element ID	Elem Ref #	Sub-Ele Ref #	Field Status	Field Name	Field Type	Length		Field Description	
						Min	Max		
N301	166		M	Address Information	AN	1	35	First Line Street Address	
N302	166		O	Address Information	AN	1	35	Second Line Street Address	
N3~123 C Street~PO Box 222\									
Syntax Notes: None									
FTA Note: None									

<b>City, State, Zip Code Detail</b>								<b>Pos. No. 0900</b>	
<b>Location Geographic Segment</b>									
Element ID	Elem Ref #	Sub-Ele Ref #	Field Status	Field Name	Field Type	Length		Field Description	
						Min	Max		
N401	19		O	City Name	AN	2	30	Name of City	
N402	156		O	State code or Province	ID	2	2	State or Province Abbreviation	
N403	116		O	Postal (Zip) Code	ID	3	11	ZIP Code, ZIP Plus 4 Code or Foreign Postal code	
N404	26		O	Country	ID	2	2	Country Abbreviation (United States = US)	
N4~MANDAN~ND~12345~2222~US\									
Syntax Notes: None									
FTA Note: None									

General Contact Person								
Administrative Communications Contact Segment								Pos. No. 1000
Element ID	Elem Ref #	Sub-Ele Ref #	Field Status	Field Name	Field Type	Length		Field Description
						Min	Max	
PER01	366		M	Contact Function Code	ID	2	2	Contact Type Code: "CN" = General Contact
PER02	93		O	Name	AN	1	35	Contact Name
PER03	365		X	Communications Number Qualifier	ID	2	2	"TE" = Telephone Number
PER04	364		X	Communications Number	AN	10	14	Voice Telephone Number
PER05	365		X	Communications Number Qualifier	ID	2	2	"FX" = FAX Number
PER06	364		X	Communications Number	AN	10	10	FAX Telephone Number
PER07	365		X	Communications Number Qualifier	ID	2	2	"EM" = Electronic Mail
PER08	364		X	Communications Number	AN	1	80	E-mail Address
PER~CN~Joan Smith~TE~7015559988~FX~7015559977~EM~JSmith@abc.com\								
Syntax Notes: If either PER03 or PER04 is present, then the other is required. If either PER05 or PER06 is present, then the other is required. If either PER07 or PER08 is present, then the other is required.								
FTA Note: None								
ND Note: This segment is required.								

EDI Contact Person								
Administrative Communications Contact Segment								Pos. No. 1000
Element ID	Elem Ref #	Sub-Ele Ref #	Field Status	Field Name	Field Type	Length		Field Description
						Min	Max	
PER01	366		M	Contact Function Code	ID	2	2	Contact Type Code: "EA" = EDI Coordinator
PER02	93		O	Name	AN	1	35	Contact Name
PER03	365		X	Communications Number Qualifier	ID	2	2	"TE" = Telephone Number
PER04	364		X	Communications Number	AN	10	14	Voice Telephone Number
PER05	365		X	Communications Number Qualifier	ID	2	2	"FX" = FAX Number
PER06	364		X	Communications Number	AN	10	10	FAX Telephone Number
PER07	365		X	Communications Number Qualifier	ID	2	2	"EM" = Electronic Mail
PER08	364		X	Communications Number	AN	1	80	E-mail Address
PER~EA~Bob Smith~TE~7015559988~FX~7015559988~EM~bsmith@abc.com\								
Syntax Notes: If either PER03 or PER04 is present, then the other is required. If either PER05 or PER06 is present, then the other is required. If either PER07 or PER08 is present, then the other is required.								
FTA Note: None								
ND Note: This segment is required.								

The following segments are required if the mailing address is different than the physical address.

Mailing Name Detail								
Name Segment								Pos. No. 0500
Element ID	Elem Ref #	Sub-Ele Ref #	Field Status	Field Name	Field Type	Length		Field Description
						Min	Max	
N101	98		M	Entity Identification Code	ID	2	2	"31" = Postal Mailing
N102	93		X	Name	AN	1	35	Mailing Name
N1~31~ABC Company\								
Syntax Notes: N102 is required.								
FTA Note: None								

Mailing Additional Name Detail									
Additional Name Segment									
Pos. No. 0600									
Element ID	Elem Ref #	Sub-Ele Ref #	Field Status	Field Name	Field Type	Length		Field Description	
						Min	Max		
N201	93		M	Name	AN	1	35	Mailing Name	
N202	93		O	Name	AN	1	35	Mailing Name	
<del>N2-ABC Fuel Company-ABC Subsidiary\</del>									
Syntax Notes: None									
FTA Note: None									

Mailing Address Detail									
Address Information Segment									
Pos. No. 0800									
Element ID	Elem Ref #	Sub-Ele Ref #	Field Status	Field Name	Field Type	Length		Field Description	
						Min	Max		
N301	166		M	Address Information	AN	1	35	First Line Street Address	
N302	166		O	Address Information	AN	1	35	Second Line Street Address	
N3-123 C Street~PO Box 222\									
Syntax Notes: None									
FTA Note: None									

Mailing City, State, Zip Code Detail									
Location Geographic Segment									
Pos. No. 0900									
Element ID	Elem Ref #	Sub-Ele Ref #	Field Status	Field Name	Field Type	Length		Field Description	
						Min	Max		
N401	19		O	City Name	AN	2	30	Name of City	
N402	156		O	State code or Province	ID	2	2	State or Province Abbreviation	
N403	116		O	Postal (Zip) Code	ID	3	11	ZIP Code, ZIP Plus 4 Code or Foreign Postal code	
N404	26		O	Country	ID	2	2	Country Abbreviation (United States = US)	
N4~Bismarck~ND~12345-2222~US\									
Syntax Notes: None									
FTA Note: None									

End of Transaction Set Header

## Transaction Set - Terminal Operator Report (TOR)

This TFS loop reports information on the TOR. Transaction detail is reported using the Schedule section of this map.

The TFS loop is repeated when reporting information for each terminal reported. Repeat the FGS loop within the TFS loop for each product reported.

<b>Beginning of Terminal Operator Report</b>								
<b>Tax Form Segment</b>								<b>Pos. No. 0100</b>
Element ID	Elem Ref. #	Sub-Ele Ref. #	Field Status	Field Name	Field Type	Length		Field Description
						Min	Max	
TFS01	128		M	Reference Identification Qualifier	ID	2	2	"T2" = Tax Form Code
TFS02	127		M	Reference Identification	AN	1	6	"TOR" = Terminal Operator Report
<b>TFS03 and TFS04 are not used</b>								
TFS05	66		X	ID Code Qualifier	ID	2	2	"TC" = IRS Terminal Code
TFS06	67		X	ID Code	AN	9	9	IRS Terminal Control Number (TCN)
<b>TFS~T2~TOR~TC~T99ND0000\</b>								
<b>Syntax Notes: If either TFS05 or TFS06 is present, then the other is required.</b>								
<b>FTA Note: None</b>								

<b>Relationship to the Transaction Information</b>								
<b>Reference Segment</b>								<b>Pos. No. 0200</b>
Element ID	Elem Ref. #	Sub-Ele Ref. #	Field Status	Field Name	Field Type	Length		Field Description
						Min	Max	
REF01	128		M	Reference Identification Qualifier	ID	2	2	"SU" = Special Processing
REF02	127		X	Reference Identification	AN	3	3	IRS = IRS Data N/A = If not applicable to the IRS
<b>REF03 Not used</b>								
REF04	C040	128	M	Reference Identification Qualifier	ID	2	2	"S0" = Special Approval (S Zero)
REF05	C040	127	M	Reference Identification	AN	2	2	State Abbreviation for state which data belongs to.
REF06	C040	128	X	Reference Identification Qualifier	ID	2	2	"S0" = Special Approval (S Zero)
REF07	C040	127	X	Reference Identification	AN	2	2	State abbreviation for state which data belongs to.
<b>REF~SU~N/A~S0^ND\</b>								
<b>Syntax Notes: REF02 is required.</b>								
<b>FTA Note: REF02, REF05 and REF07 represent the taxing authorities and their relationship to the information in this TFS loop. REF05 - REF07 use the sub-element separator.</b>								

### Sequence ID Number Usage

Sequence ID number is a counter used as a reference point when the Tax Commissioner contacts a filer with a question about the filer EDI file. The first Sequence ID Number within an envelope (ISA/IEA loop) will start at 1. Every subsequent REF within the ISA/IEA loop will be incremented by 1.

<b>Sequence ID Number</b>								
<b>Reference Number Segment</b>								<b>Pos. No. 0200</b>
Element ID	Elem Ref #	Sub-Ele Ref #	Field Status	Field Name	Field Type	Length		Field Description
						Min	Max	
REF01	128		M	Reference Identification Qualifier	ID	2	2	"55" = Sequence ID Number
REF02	127		X	Reference Identification	AN	1	7	Sequence Number
REF03	352		X	Description	AN	1	5	Error Response Code
<b>REF~55~01234\</b>								
<b>Syntax Notes: REF02 is required.</b>								
<b>FTA Notes: REF02 is always required; REF03 is used when responding to an error</b>								
<b>ND Notes: REF03 is not used. See notes on sequence number on page 5-244</b>								

**Condition 1 - If an account has no activity, the following REF segment is required. The following Condition 2 DTM and FGS are not used.**

<b>No Activity</b>									<b>(Conditional)</b>	
<b>Reference Number Segment</b>									<b>Pos. No. 0200</b>	
Element ID	Elem Ref #	Sub-Ele Ref #	Field Status	Field Name	Field Type	Length		Field Description		
						Min	Max			
REF01	128		M	Entity Identification Code	ID	2	2	"BE" = Business Activity		
REF02	127		X	Name	AN	1	1	"1" = No Activity		
REF~BE~1\										
Syntax Notes: REF02 is required.										
FTA Note: None										

**Condition 2 - If an account has activity, the following DTM and FGS segments are required. The preceding REF is not used. This FGS loop contains inventory information. The FGS loop repeated when the product code value changes.**

<b>Ending Inventory Date</b>									<b>(Conditional)</b>	
<b>Date/Time Reference Segment</b>									<b>Pos. No. 0300</b>	
Element ID	Elem Ref #	Sub-Ele Ref #	Field Status	Field Name	Field Type	Length		Field Description		
						Min	Max			
DTM01	374		M	Date/Time Qualifier	ID	3	3	"184" = Inventory Date		
DTM02	373		X	Date	DT	8	8	"CCYYMMDD"		
DTM~184~20080131\										
Syntax Notes: DTM02 is required.										
FTA Note: None										

<b>Physical Inventory by Product</b>									<b>(Conditional)</b>	
<b>Form Group Segment</b>									<b>Pos. No. 1000</b>	
Element ID	Elem Ref. #	Sub-Ele Ref. #	Field Status	Field Name	Field Type	Length		Field Description		
						Min	Max			
FGS01	350		M	Assigned Identification	AN	2	2	"EI" = Ending Inventory		
FGS02	128		X	Reference Identification Qualifier	ID	2	2	"PG" = Product Group		
FGS03	127		X	Reference Identification	AN	3	3	Product Code See Appendix B		
FGS~EI~PG~065\										
Syntax Notes: If either FGS02 or FGS03 is present, then the other is required.										
FTA Note: None										

<b>Sequence ID Number</b>									<b>(Conditional)</b>	
<b>Reference Number Segment</b>									<b>Pos. No. 0200</b>	
Element ID	Elem Ref #	Sub-Ele Ref #	Field Status	Field Name	Field Type	Length		Field Description		
						Min	Max			
REF01	128		M	Reference Identification Qualifier	ID	2	2	"55" = Sequence ID Number		
REF02	127		X	Reference Identification	AN	1	7	Sequence Number		
REF03	352		X	Description	AN	4	5	Error Response Code		
REF~55~01234\										
Syntax Notes: REF02 is required.										
FTA Notes: REF02 is always required; REF03 is used when responding to an error										
ND Notes: REF03 is not used. See notes on sequence number on page 5-244										

Inventory								(Required if FGS is Used)
Tax Information and Amount Segment								Pos. No. 1800
Element ID	Elem Ref. #	Sub-Ele Ref. #	Field Status	Field Name	Field Type	Length		Field Description
						Min	Max	
TIA01	817		M	Tax Information ID Number	AN	4	4	"5002" = Net Physical Inventory
TIA02 and TIA03 are not used.								
TIA04	380		X	Quantity	R	1	15	Quantity
TIA05	355		M	Unit of Measurement Code	ID	2	2	"GA" = Gallons
TIA~5002~~~1000~GA\								
Syntax Notes: At least one of TIA02, TIA03, TIA04, TIA06 or TIA07 is required. If TIA05 is present, then TIA04 is required.								
FTA Note: Physical Inventory is the only value passed. All other information is derivable from schedules.								

End of FGS loop (Line item detail)

End of TFS loop (TOR detail)

## Transaction Set - Supplier/Distributor Report (SDR)

This TFS loop reports information on the SDR. Transaction detail is reported using the Summary Information and Schedule sections of this map.

Beginning of Supplier/Distributor Report Detail								Pos. No. 0100	
Tax Form Segment									
Element ID	Elem Ref. #	Sub-Ele Ref. #	Field Status	Field Name	Field Type	Length		Field Description	
						Min	Max		
TFS01	128		M	Reference Identification Qualifier	ID	2	2	"T2" = Tax Form Code	
TFS02	127		M	Reference Identification	AN	1	6	"SDR" = Supplier/Distributor Report	
TFS~T2~SDR\									
Syntax Notes: None									
FTA Note: The TFS loop is used once when reporting information for the SDR. Repeat the FGS loop within the TFS loop for each product reported.									

Relationship to the Transaction Information								Pos. No. 0200	
Reference Segment									
Element ID	Elem Ref. #	Sub-Ele Ref. #	Field Status	Field Name	Field Type	Length		Field Description	
						Min	Max		
REF01	128		M	Reference Identification Qualifier	ID	2	2	"SU" = Special Processing	
REF02	127		X	Reference Identification	AN	3	3	IRS = IRS Data N/A = If not applicable to the IRS	
<del>REF03 Not used</del>									
REF04	C040	128	M	Reference Identification Qualifier	ID	2	2	"S0" = Special Approval (S Zero)	
REF05	C040	127	M	Reference Identification	AN	2	2	State Abbreviation for state which data belongs to.	
REF06	C040	128	X	Reference Identification Qualifier	ID	2	2	"S0" = Special Approval (S Zero)	
REF07	C040	127	X	Reference Identification	AN	2	2	State abbreviation for state which data belongs to.	
<del>REF~SU~N/A~S0^ND\</del>									
Syntax Notes: At least one of REF02 or REF03 is required.									
FTA Note: REF02, REF05 and REF07 represent the taxing authorities and their relationship to the information in this TFS loop. REF05 - REF07 use the sub-element separator.									

Sequence ID Number								Pos. No. 0200	
Reference Number Segment									
Element ID	Elem Ref #	Sub-Ele Ref #	Field Status	Field Name	Field Type	Length		Field Description	
						Min	Max		
REF01	128		M	Reference Identification Qualifier	ID	2	2	"55" = Sequence ID Number	
REF02	127		X	Reference Identification	AN	1	7	Sequence Number	
REF03	352		X	Description	AN	4	5	Error Response Code	
REF~55~01234\									
Syntax Notes: REF02 is required.									
FTA Notes: REF02 is always required; REF03 is used when responding to an error									
ND Notes: REF03 is not used. See notes on sequence number on 5-24									

Condition 1 - If an account has no activity, this segment is required. The Condition 2 DTM, TIA and FGS Loop are not used.

No Activity								(Conditional)	
Reference Number Segment								Pos. No. 0200	
Element ID	Elem Ref #	Sub-Ele Ref #	Field Status	Field Name	Field Type	Length		Field Description	
						Min	Max		
REF01	128		M	Entity Identification Code	ID	2	2	"BE" = Business Activity	
REF02	127		X	Name	AN	1	1	"1" = No Activity	
REF~BE~1\									
Syntax Notes: REF02 is required.									
FTA Notes: None									

Condition 2 – If an account has activity, at least the TIA (Total Due) segment is required. The Condition 1 REF is not used. The FGS loop contains inventory information by product. The FGS loop repeats when the product code value changes.

Ending Inventory Date Date/Time Reference Segment								(Conditional) Pos. No. 0300	
Element ID	Elem Ref #	Sub-Ele Ref #	Field Status	Field Name	Field Type	Length		Field Description	
						Min	Max		
DTM01	374		M	Date/Time Qualifier	ID	3	3	“184” = Inventory Date	
DTM02	373		X	Date	DT	8	8	“CCYYMMDD”	
DTM~184~20080131\									
Syntax Notes: DTM02 is required.									
FTA Notes: Use this segment when reporting ending inventory in the FGS Loop for the supplier/distributor.									

Total Due Tax Information and amount Segment								(Conditional) Pos. No. 0920	
Element ID	Elem Ref #	Sub-Ele Ref #	Field Status	Field Name	Field Type	Length		Field Description	
						Min	Max		
TIA01	817		M	Tax Information ID Number	AN	4	4	“5003” = Total Due	
TIA02	782		X	Monetary Amount	R	1	15	Dollar Amount	
TIA03 is not used.									
TIA04	380		X	Quantity	R	1	15	Quantity	
TIA05	355		M	Unit of Measurement Code	ID	2	2	“GA” = Gallons	
TIA~5003~148.75~~25000~GA\									
Syntax Notes: At least one of TIA02 or TIA04 is required. If TIA05 is present, then TIA04 is required.									
FTA Notes: Total Due is passed as a check value and represents dollars and/or quantity.									
ND Notes: Formatting of TIA02: Special Fuels Tax Report - total amount due from Line 26 Liquefied Petroleum Fuel Tax Report - total amount due from Line 22 Motor Vehicle Fuel Tax Report - total amount due from Line 26 Aviation Fuel Tax Report - total amount due from Line 21 TIA04 is the sum of gallons on all schedules for the report									

Physical Inventory by Product Form Group Segment								(Conditional) Pos. No. 1000	
Element ID	Elem Ref #	Sub-Ele Ref #	Field Status	Field Name	Field Type	Length		Field Description	
						Min	Max		
FGS01	350		M	Assigned Identification	AN	2	2	“EI” = Ending Inventory	
FGS02	128		X	Reference Identification Qualifier	ID	2	2	“PG” = Product Group	
FGS03	127		X	Reference Identification	AN	3	3	Product Code See Appendix B	
FGS~EI~PG~065\									
Syntax Notes: If either FGS02 or FGS03 is present, then the other is required.									
FTA Notes: This FGS allows looping to report Inventory by product. Repeat this loop (a single TIA per FGS) as many times as needed to complete reporting requirements.									

Sequence ID Number Reference Number Segment								Pos. No. 0200	
Element ID	Elem Ref #	Sub-Ele Ref #	Field Status	Field Name	Field Type	Length		Field Description	
						Min	Max		
REF01	128		M	Reference Identification Qualifier	ID	2	2	“55” = Sequence ID Number	
REF02	127		X	Reference Identification	AN	1	7	Sequence Number	
REF03	352		X	Description	AN	4	5	Error Response Code	
REF~55~01234\									
Syntax Notes: REF02 is required.									
FTA Notes: REF02 is always required; REF03 is used when responding to an error									
ND Notes: REF03 is not used. See notes on sequence number on page 5-244									

<b>Inventory</b>								<b>(Required if FGS is Used)</b>	
<b>Tax Information and Amount Segment</b>								<b>Pos. No. 1800</b>	
<b>Element ID</b>	<b>Elem Ref. #</b>	<b>Sub-Ele Ref. #</b>	<b>Field Status</b>	<b>Field Name</b>	<b>Field Type</b>	<b>Length</b>		<b>Field Description</b>	
						<b>Min</b>	<b>Max</b>		
TIA01	817		M	Tax Information ID Number	AN	4	4	“5002” = Net Physical Inventory	
TIA02 - TIA03 are not used.									
TIA04	380		X	Quantity	R	1	15	Quantity	
TIA05	355		M	Unit of Measurement Code	ID	2	2	“GA” = Gallons	
TIA~5002~~~25000~GA\									
<b>Syntax Notes:</b> TIA04 is required. <b>If TIA05 is present, then TIA04 is required.</b>									
<b>FTA Notes:</b> <b>Physical Inventory is the only value passed in this loop. All other information is derivable from schedules.</b>									
<b>ND Notes:</b> <b>Inventory must be reported in Gross Gallons</b>									

**End of FGS loop (Line item detail)**

**End of TFS loop (SDR detail)**

## Summary Information

This TFS loop reports summary information. This TFS loop is used in combination with the SDR report.

Summary information is used when the information cannot be derived from the schedule details. This TFS loop repeats when one of the following values changes: TFS02 Summary Code, TFS04 Product Code.

If there are no transactions to report in this filing, it is not necessary to transmit a Summary Information TFS loop.

<b>Beginning of Summary Information</b>									<b>Pos. No. 0100</b>
<b>Tax Form Segment</b>									
Element ID	Elem Ref. #	Sub-Ele Ref. #	Field Status	Field Name	Field Type	Length		Field Description	
						Min	Max		
TFS01	128		M	Reference Identification Qualifier	ID	2	2	"T3" = Tax Schedule Code	
TFS02	127		M	Reference Identification	AN	1	6	TFS02 Summary Code "S01C" Product Transfer (Disbursement) "S01D" Product Transfer (Receipt) "S02C" Inspection Fee "S02A" Penalty and Interest on Tax "S03C" Collection Allowance "S05K" Sales Price of 2% Taxable Gallons "S05L" Sales Price of 1% Taxable Gallons See Appendix C	
TFS03	128		X	Reference Identification Qualifier	ID	2	2	"PG" = Product Group	
TFS04	127		X	Reference Identification	AN	3	3	Product Code See Appendix B	
TFS05	66		X	Identification Code Qualifier	ID	2	2	"94" = Mode	
TFS06	67		X	Identification Code	AN	2	2	"CE" = Transaction Type Mode Code	
<b>TFS~T3~S01C~PG~065~94~CE\ or TFS~T3~S02A~~~94~CE\</b>									
<b>Syntax Notes:</b> If either TFS03 or TFS04 is present, then the other is required. If either TFS05 or TFS06 is present, then the other is required.									
<b>FTA Notes:</b> None									
<b>ND Notes:</b> TFS03 and TFS04 are not used for Summary Codes S02C, S02A, or S03C (not product specific). Both TIA segments for TIA codes "5008" interest and "5009" penalty are required for Summary Code S02A.									

<b>Relationship to the Transaction Information</b>									<b>Pos. No. 0200</b>
<b>Reference Segment</b>									
Element ID	Elem Ref. #	Sub-Ele Ref. #	Field Status	Field Name	Field Type	Length		Field Description	
						Min	Max		
REF01	128		M	Reference Identification Qualifier	ID	2	2	"SU" = Special Processing	
REF02	127		X	Reference Identification	AN	3	3	IRS = IRS Data N/A = If not applicable to the IRS	
<b>REF03 - Not used</b>									
REF04	C040	128	M	Reference Identification Qualifier	ID	2	2	"S0" = Special Approval (S Zero)	
REF05	C040	127	M	Reference Identification	AN	2	2	State Abbreviation for state which data belongs to.	
REF06	C040	128	X	Reference Identification Qualifier	ID	2	2	"S0" = Special Approval (S Zero)	
REF07	C040	127	X	Reference Identification	AN	2	2	State abbreviation for state which data belongs to.	
<b>REF~SU~N/A~~S0^ND\</b>									
<b>Syntax Notes:</b> At least one of REF02 or REF03 is required.									
<b>FTA Notes:</b> REF02, REF05 and REF07 represent the taxing authorities and their relationship to the information in this TFS loop. REF05 - REF07 use the sub-element separator.									

Sequence ID Number								
Reference Number Segment								Pos. No. 0200
Element ID	Elem Ref #	Sub-Ele Ref #	Field Status	Field Name	Field Type	Length		Field Description
						Min	Max	
REF01	128		M	Reference Identification Qualifier	ID	2	2	"55" = Sequence ID Number
REF02	127		X	Reference Identification	AN	1	7	Sequence Number
REF03	352		X	Description	AN	4	5	Error Response Code
REF~55~01234\								
Syntax Notes: REF02 is required.								
FTA Notes: REF02 is always required; REF03 is used when responding to an error								
ND Notes: REF03 is not used. See notes on sequence number on page 5-244								

Summary Data								
Forms Group Segment								Pos. No. 1000
Element ID	Elem Ref #	Sub-Ele Ref #	Field Status	Field Name	Field Type	Length		Field Description
						Min	Max	
FGS01	350		M	Assigned Identification	AN	1	1	"S" = Schedule Summary
FGS~S\								
Syntax Notes: None								
FTA Notes: None								

Sequence ID Number								
Reference Number Segment								Pos. No. 0200
Element ID	Elem Ref #	Sub-Ele Ref #	Field Status	Field Name	Field Type	Length		Field Description
						Min	Max	
REF01	128		M	Reference Identification Qualifier	ID	2	2	"55" = Sequence ID Number
REF02	127		X	Reference Identification	AN	1	7	Sequence Number
REF03	352		X	Description	AN	4	5	Error Response Code
REF~55~01234\								
Syntax Notes: REF02 is required.								
FTA Notes: REF02 is always required; REF03 is used when responding to an error								
ND Notes: REF03 is not used. See notes on sequence number on page 5-244								

Information								
Tax Information and Amount Segment								Pos. No. 1800
Element ID	Elem Ref #	Sub-Ele Ref #	Field Status	Field Name	Field Type	Length		Field Description
						Min	Max	
TIA01	817		M	Tax Information ID Number	AN	4	4	TIA Code "5005" Net "5006" Gross
TIA02	782		X	Monetary Amount	R	1	15	Dollar Amount
TIA03 are not used.								
TIA04	380		X	Quantity	R	1	15	Quantity
TIA05	355		M	Unit of Measurement Code	ID	2	2	"GA" = Gallons
TIA~5006~~~25000~GA\ or TIA~5005~1475.63\								
Syntax Notes: At least one of TIA02 or TIA04 is required. If TIA05 is present, then TIA04 is required.								
FTA Notes: None								
ND Notes: TIA01 must be "5005" when reporting dollar amounts, "5006" when reporting gross gallons								

<b>Interest</b>								
<b>Tax Information and Amount Segment</b>								<b>Pos. No. 1800</b>
<b>Element ID</b>	<b>Elem Ref. #</b>	<b>Sub-Ele Ref. #</b>	<b>Field Status</b>	<b>Field Name</b>	<b>Field Type</b>	<b>Length</b>		<b>Field Description</b>
						<b>Min</b>	<b>Max</b>	
TIA01	817		M	Tax Information ID Number	AN	4	4	“5008” = Interest
TIA02	782		X	Monetary Amount	R	1	15	Dollar Amount
<b>TIA~5008~500\</b>								
<b>Syntax Notes: TIA02 is required.</b>								
<b>FTA Notes: None</b>								

<b>Penalty</b>								
<b>Tax Information and Amount Segment</b>								<b>Pos. No. 1800</b>
<b>Element ID</b>	<b>Elem Ref. #</b>	<b>Sub-Ele Ref. #</b>	<b>Field Status</b>	<b>Field Name</b>	<b>Field Type</b>	<b>Length</b>		<b>Field Description</b>
						<b>Min</b>	<b>Max</b>	
TIA01	817		M	Tax Information ID Number	AN	4	4	“5009” = Penalty
TIA02	782		X	Monetary Amount	R	1	15	Dollar Amount
<b>TIA~5009~200\</b>								
<b>Syntax Notes: TIA02 is required.</b>								
<b>FTA Notes: None</b>								

**End of FGS loop (Line item detail)**

**End of TFS loop (SDR detail)**

## North Dakota Summary Mapping

### Special Fuels Tax Report

TFS02 Summary Code: S01C Product Transfer Disbursement	(Page 1, Line 3 of report)	TIA Code: 5006
TFS02 Summary Code: S01D Product Transfer Receipt	(Page 1, Line 3 of report)	TIA Code: 5006
TFS02 Summary Code: S02A Interest	(Page 1, Line 21 of report)	TIA Code: 5008
Penalty	(Page 1, Line 20 of report)	TIA Code: 5009
TFS02 Summary Code: S02C Inspection Fees <b>(Required)</b>	(Page 1, Line 22 of report)	TIA Code: 5005
TFS02 Summary Code: S03C Collection Allowance <b>(Required)</b>	(Page 1, Line 18 of report)	TIA Code: 5005

### Liquefied Petroleum Tax Report

TFS02 Summary Code: S02A Interest	(Page 1, Line 20 of report)	TIA Code: 5008
Penalty	(Page 1, Line 19 of report)	TIA Code: 5009
TFS02 Summary Code: S03C Collection Allowance <b>(Required)</b>	(Page 1, Line 17 of report)	TIA Code: 5005
TFS02 Summary Code: S05K Sales Price of 2% Taxable Gallons <b>(Required when schedule 5X is used.)</b>	(Page 1, Line 12 of report)	TIA Code: 5005
TFS02 Summary Code: S05L Sales Price of 1% Taxable Gallons <b>(Required when schedule 10A is used.)</b>	(Page 1, Line 14 of report)	TIA Code: 5005

### Motor Vehicle Fuel Tax Report

TFS02 Summary Code: S01C Product Transfer Disbursement	(Page 1, Line 3 of report)	TIA Code: 5006
TFS02 Summary Code: S01D Product Transfer Receipt	(Page 1, Line 3 of report)	TIA Code: 5006
TFS02 Summary Code: S02A Interest	(Page 1, Line 21 of report)	TIA Code: 5008
Penalty	(Page 1, Line 20 of report)	TIA Code: 5009
TFS02 Summary Code: S02C Inspection Fees <b>(Required)</b>	(Page 1, Line 22 of report)	TIA Code: 5005
TFS02 Summary Code: S03C Collection Allowance <b>(Required)</b>	(Page 1, Line 18 of report)	TIA Code: 5005

**Aviation Fuel Tax Report**

TFS02 Summary Code: S02A

Interest	(Line 18 of report)	TIA Code: 5008
Penalty	(Line 17 of report)	TIA Code: 5009

TFS02 Summary Code: S03C

Collection Allowance ( <b>Required</b> )	(Line 15 of report)	TIA Code: 5005
--	---------------------	----------------

**Note: Summary segments are not required unless indicated. You must include the summary segments needed to indicate inventory transferred, penalty owed, interest owed. Also note that summary segments are not required with a 'No Activity' filing.**

See sample mapping of Tax Reports in Appendix H.

## Schedules

This TFS loop begins the schedule detail. It repeats when one of the following values change:

Tax Form Code, Schedule Code, Mode Code, Product Code, Origin, Position Holder, Seller, Consignor, Carrier, Buyer, Consignee or Destination.

If there are no transactions to report in this filing, it is not necessary to transmit a Schedules TFS loop. You must indicate no activity in the TOR, SDR and/or CCR sections of this map.

<b>Beginning of Schedules</b>								<b>Pos. No. 0100</b>
<b>Tax Form Segment</b>								
Element ID	Elem Ref. #	Sub-Ele Ref. #	Field Status	Field Name	Field Type	Length		Field Description
						Min	Max	
TFS01	128		M	Reference Identification Qualifier	ID	2	2	"T3" = Tax Schedule Code
TFS02	127		M	Reference Identification	AN	1	6	Schedule Type Code See Appendix A
TFS03	128		X	Reference Identification Qualifier	ID	2	2	"PG" = Product Group
TFS04	127		X	Reference Identification	AN	3	3	Product Code See Appendix B
TFS05	66		X	Identification Code Qualifier	ID	2	2	"94" = Mode
TFS06	67		X	Identification Code	AN	2	2	Transaction Type Mode Code See Appendix D
<b>TFS~T3~2~PG~065~94~J \</b>								
<b>Syntax Notes: If either TFS03 or TFS04 is present, then the other is required. If either TFS05 or TFS06 is present, then the other is required.</b>								
<b>FTA Notes: None</b>								

<b>Relationship to the Transaction Information</b>								<b>Pos. No. 0200</b>
<b>Reference Segment</b>								
Element ID	Elem Ref. #	Sub-Ele Ref. #	Field Status	Field Name	Field Type	Length		Field Description
						Min	Max	
REF01	128		M	Reference Identification Qualifier	ID	2	2	"SU" = Special Processing
REF02	127		X	Reference Identification	AN	3	3	IRS = IRS Data N/A = If not applicable to the IRS
<b>REF03 Not used</b>								
REF04	C040	128	M	Reference Identification Qualifier	ID	2	2	"S0" = Special Approval (S Zero)
REF05	C040	127	M	Reference Identification	AN	2	2	State Abbreviation for state which data belongs to.
REF06	C040	128	X	Reference Identification Qualifier	ID	2	2	"S0" = Special Approval (S Zero)
REF07	C040	127	X	Reference Identification	AN	2	2	State abbreviation for state which data belongs to.
<b>REF~SU~N/A~S0~ND\</b>								
<b>Syntax Notes: REF02 is required.</b>								
<b>FTA Notes: REF02, REF05 and REF07 represent the taxing authorities and their relationship to the information in this TFS loop. REF05 - REF07 use the sub-element separator.</b>								

<b>Sequence ID Number</b>								<b>Pos. No. 0200</b>
<b>Reference Number Segment</b>								
Element ID	Elem Ref #	Sub-Ele Ref #	Field Status	Field Name	Field Type	Length		Field Description
						Min	Max	
REF01	128		M	Reference Identification Qualifier	ID	2	2	"55" = Sequence ID Number
REF02	127		X	Reference Identification	AN	1	7	Sequence Number
REF03	352		X	Description	AN	4	5	Error Response Code
<b>REF~55~01234\</b>								
<b>Syntax Notes: REF02 is required.</b>								
<b>FTA Notes: REF02 is always required; REF03 is used when responding to an error</b>								
<b>ND Notes: REF03 is not used. See notes on sequence number on page 5-244</b>								

**For Point of Origin/Terminal: (One of the following Options is Required)**

Use **Option 1** when the origin has an IRS TCN.

Use **Option 2** when the origin does not have an IRS TCN.

Use **Option 3** when the state requires an origin facility ID (currently used by the state of Florida).

**Option 1**

Point of Origin Name Segment 1									(One of the two options is used) Pos. No. 0500		
Element ID	Elem Ref. #	Sub-Ele Ref. #	Field Status	Field Name	Field Type	Length		Field Description			
						Min	Max				
N101	98		M	Entity Identification Code	ID	2	2	"OT" = Origin Terminal			
N102 is not used.											
N103	66		X	Identification Code Qualifier	ID	2	2	"TC" = IRS Terminal Code			
N104	67		X	Identification Code	AN	9	9	IRS Terminal Code (Code list is located at <a href="http://www.irs.gov/bus_info/excise/index.html">www.irs.gov/bus_info/excise/index.html</a> )			
N1~OT~~TC~T99ND0000\											
Syntax Notes: N103 is required. If either N103 or N104 is present, then the other is required.											
FTA Notes: None											
ND Notes: Origin Terminal (Option 1) is required for all Terminal Operator Disbursements Origin is optional for Terminal Operator Receipts Either origin option 1 or origin option 2 is required for all other schedules											

**Option 2**

Point of Origin Name Segment 1									(One of the two options is used) Pos. No. 0500		
Element ID	Elem Ref. #	Sub-Ele Ref. #	Field Status	Field Name	Field Type	Length		Field Description			
						Min	Max				
N101	98		M	Entity Identification Code	ID	2	2	"SF" = Ship From			
N102	93		X	Name	AN	2	2	Origin State Abbreviation			
N1~SF~ND\											
Syntax Notes: N102 is required.											
FTA Notes: None											
ND Notes: Either origin option 1 or origin option 2 is required for all schedules											

Point of Origin Name Segment 1									Pos. No. 0500		
Element ID	Elem Ref. #	Sub-Ele Ref. #	Field Status	Field Name	Field Type	Length		Field Description			
						Min	Max				
N401	19		M	City Name	AN	2	30	Name of City			
N402	156		O	State or Province Code	ID	2	2	State or Providence Abbreviation			
N403	116		O	Postal Code	ID	3	11	ZIP or ZIP plus 4 Code			
N4~Minot~ND\											
Syntax Notes: None											
FTA Notes: None											
ND Notes: Include this segment when using origin option 2.											

Option 3

Point of Origin <span style="float: right;">(One of the three options is used)</span>								
Name Segment 1 <span style="float: right;">Pos. No. 0500</span>								
Element ID	Elem Ref. #	Sub-Ele Ref. #	Field Status	Field Name	Field Type	Length		Field Description
						Min	Max	
N101	98		M	Entity Identification Code	ID	2	2	"WO" = Storage Facility at Origin
N102 is not used.								
N103	66		X	Identification Code Qualifier	ID	2	2	"FA" = Facility Identification
N104	67		X	Identification Code	AN	2	20	Facility/License Number
N1~WO~FA~123456\								
Syntax Notes: N103 is required. If either N103 or N104 is present, then the other is required.								
FTA Notes: None								

Seller Information								
Name Segment 2 <span style="float: right;">Pos. No. 0500</span>								
Element ID	Elem Ref. #	Sub-Ele Ref. #	Field Status	Field Name	Field Type	Length		Field Description
						Min	Max	
N101	98		M	Entity Identification Code	ID	2	2	"SE" = Selling Party
N102	93		X	Name	AN	1	35	Seller's Name
N103	66		X	Identification Code Qualifier	ID	2	2	"24" = FEIN "34" = SSN
N104	67		X	Identification Code	AN	9	15	Seller's FEIN or SSN plus 2 digit ND Suffix
N1~SE~Fuel Inc~24~51666999971\								
Syntax Notes: At least one of N102 or N103 is required. If either N103 or N104 is present, then the other is required.								
FTA Notes: None								
ND Notes: Required for Receipt Schedules (except Terminal Operator Schedule of Receipts) Include the 2 character North Dakota assigned FEIN suffix; the N104 must contain 11 digits without dashes. North Dakota's requirement to include a two-digit state-assigned suffix is an exception to FTA uniformity.								

Position Holder Information or Delivering Exchange Party Information								
Name Segment 3 <span style="float: right;">Pos. No. 0500</span>								
Element ID	Elem Ref. #	Sub-Ele Ref. #	Field Status	Field Name	Field Type	Length		Field Description
						Min	Max	
N101	98		M	Entity Identification Code	ID	2	2	"ON" = Position Holder
N102	93		X	Name	AN	1	35	Position Holder's Name
N103	66		X	Identification Code Qualifier	ID	2	2	"24" = FEIN "34" = SSN
N104	67		X	Identification Code	AN	9	15	Position Holder's FEIN or SSN plus 2 digit ND Suffix
N1~ON~ABC Fuel~24~51688888870\								
Syntax Notes: At least one of N102 or N103 is required. If either N103 or N104 is present, then the other is required.								
FTA Notes: None								
ND Notes: Required for Terminal Operator Receipt Schedules Include the 2 character North Dakota assigned FEIN suffix; the N104 must contain 11 digits without dashes. North Dakota's requirement to include a two-digit state-assigned suffix is an exception to FTA uniformity.								

Receiving Exchange Party Information								
Name Segment 3								Pos. No. 0500
Element ID	Elem Ref. #	Sub-Ele Ref. #	Field Status	Field Name	Field Type	Length		Field Description
						Min	Max	
N101	98		M	Entity Identification Code	ID	2	2	"EC" = Position Holder
N102	93		X	Name	AN	1	35	Position Holder's Name or Control Name (First 4 position of tax payer business name)
N103	66		X	Identification Code Qualifier	ID	2	2	"24" = FEIN "34" = SSN "F1" = Federal Taxpayer 637 ID Number "50" = BN - Canadian Business Number
N104	67		X	Identification Code	AN	9	15	Position Holder's FEIN or SSN or IRS 637 Number or BN
N1-EC-ABC Fuel~24~516888888\								
Syntax Notes: At least one of N102 or N103 is required. If either N103 or N104 is present, then the other is required.								
FTA Notes: None								

Person Hiring Carrier (Consignor)								
Name Segment 4								Pos. No. 0500
Element ID	Elem Ref. #	Sub-Ele Ref. #	Field Status	Field Name	Field Type	Length		Field Description
						Min	Max	
N101	98		M	Entity Identification Code	ID	2	2	"CI" = Consignor (Person Hiring the Carrier)
N102	93		X	Name	AN	1	35	Consignor Name or Name Control (First 4 position of tax payer business name)
N103	66		X	Identification Code Qualifier	ID	2	2	"24" = FEIN "34" = SSN "50" = BN - Canadian Business Number
N104	67		X	Identification Code	AN	9	15	Consignor's (Person Hiring the Carrier) FEIN or SSN or BN
N1-CI-ABC Distributing~24~516777777\								
Syntax Notes: At least one of N102 or N103 is required. If either N103 or N104 is present, then the other is required.								
FTA Notes: None								

Carrier Information								
Name Segment 5								Pos. No. 0500
Element ID	Elem Ref. #	Sub-Ele Ref. #	Field Status	Field Name	Field Type	Length		Field Description
						Min	Max	
N101	98		M	Entity Identification Code	ID	2	2	"CA" = Carrier Name
N102	93		X	Name	AN	1	35	Carrier Name
N103	66		X	Identification Code Qualifier	ID	2	2	"24" = FEIN "34" = SSN
N104	67		X	Identification Code	AN	9	15	Carrier's FEIN or SSN
N1-CA-ABC Trucking~24~516666666\								
Syntax Notes: At least one of N102 or N103 is required. If either N103 or N104 is present, then the other is required.								
FTA Notes: None								
ND Notes: Required for all schedules								

Buyer/Consignee Information								
Name Segment 6								Pos. No. 0500
Element ID	Elem Ref. #	Sub-Ele Ref. #	Field Status	Field Name	Field Type	Length		Field Description
						Min	Max	
N101	98		M	Entity Identification Code	ID	2	2	"BY" = Buying Party (Purchaser/Consignee)
N102	93		X	Name	AN	1	35	Buyer Name
N103	66		X	Identification Code Qualifier	ID	2	2	"24" = FEIN "34" = SSN
N104	67		X	Identification Code	AN	9	15	Purchaser's FEIN or SSN plus 2 digit ND Suffix
N1~BY~Joe Gas Station~24~5172222270\								
Syntax Notes: At least one of N102 or N103 is required. If either N103 or N104 is present, then the other is required.								
FTA Notes: None								
ND Notes: Required for all Disbursement Schedules Include the 2 character North Dakota assigned FEIN suffix; the N104 must contain 11 digits without dashes. North Dakota's requirement to include a two-digit state-assigned suffix is an exception to FTA uniformity.								

For Point (Address) of Delivery/Destination: (One of the following Options is Required)

Use Option 1 when the destination has an IRS TCN.

Use Option 2 when the destination does not have an IRS TCN.

Use Option 3 when the state requires a destination facility ID (currently used by the state of Florida).

#### Option 1

Point of Destination								
Name Segment 7								(One of the two options is used)
Pos. No. 0500								
Element ID	Elem Ref. #	Sub-Ele Ref. #	Field Status	Field Name	Field Type	Length		Field Description
						Min	Max	
N101	98		M	Entity Identification Code	ID	2	2	"DT" = Destination Terminal
N102 is not used.								
N103	66		X	Identification Code Qualifier	ID	2	2	"TC" = IRS Terminal Code
N104	67		X	Identification Code	AN	9	9	IRS Terminal Code (Code list is located at <a href="http://www.irs.gov/bus_info/excise/index.html">www.irs.gov/bus_info/excise/index.html</a> )
N1~DT~~TC~T99ND0000\								
Syntax Notes: N103 is required. If either N103 or N104 is present, then the other is required.								
FTA Notes: None								
ND Notes: Destination Terminal (Option 1) is required for all Terminal Operator Receipts. Either Destination option 1 or Destination option 2 is required for all schedules								

#### Option 2

Point of Destination								
Name Segment 7								(One of the two options is used)
Pos. No. 0500								
Element ID	Elem Ref. #	Sub-Ele Ref. #	Field Status	Field Name	Field Type	Length		Field Description
						Min	Max	
N101	98		M	Entity Identification Code	ID	2	2	"ST" = Ship To
N102	93		X	Name	AN	2	2	Destination State Abbreviation
N1~ST~ND\								
Syntax Notes: N102 is required. If either N103 or N104 is present, then the other is required.								
FTA Notes: None								

Point of Destination									Pos. No. 0500	
Name Segment 7										
Element ID	Elem Ref. #	Sub-Ele Ref. #	Field Status	Field Name	Field Type	Length		Field Description		
						Min	Max			
N401	19	19	M	City Name	AN	2	30	Name of City		
N402	156	156	O	State or Province Code	ID	2	2	State or Province Abbreviation		
N403	116	116	Ø	Postal Code	ID	3	11	ZIP or ZIP plus 4 Code		
<b>N4~Stanley~ND\</b>										
Syntax Notes: None										
FTA Notes: None										
ND Notes: Include this segment when using destination option 2.										

### Option 3

Point of Destination									(One of the three options is used)	
Name Segment 7									Pos. No. 0500	
Element ID	Elem Ref. #	Sub-Ele Ref. #	Field Status	Field Name	Field Type	Length		Field Description		
						Min	Max			
N101	98		M	Entity Identification Code	ID	2	2	"WD" = Destination Facility		
<b>N102 is not used.</b>										
N103	66		X	Identification Code Qualifier	ID	2	2	"FA" = Facility Identification		
N104	67		X	Identification Code	AN	2	20	Facility/License Number		
<b>N1~WD---FA~123456\</b>										
Syntax Notes: N103 is required.										
If either N103 or N104 is present, then the other is required.										
FTA Notes: None										

This FGS loop begins the individual shipments within the TFS loop. It is repeated when one of the following values changes:  
 Bill of Lading (Document) Number  
 Bill of Lading Date (Date Shipped)  
 Gallons/Liters.

Bill of Lading									Pos. No. 1000	
Forms Group Segment										
Element ID	Elem Ref. #	Sub-Ele Ref. #	Field Status	Field Name	Field Type	Length		Field Description		
						Min	Max			
FGS01	350		M	Assigned Identification	AN	1	1	"D" = Schedule Detail		
FGS02	128		X	Reference Identification Qualifier	ID	2	2	"BM" = Bill of Lading Number		
FGS03	127		X	Reference Identification	AN	1	15	Bill of Lading Number		
<b>FGS~D~BM~00123456\</b>										
Syntax Notes: If either FGS02 or FGS03 is present, then the other is required.										
FTA Notes: None										
ND Notes: Include either Bill of Lading or Invoice Number – please refer to North Dakota Reporting Instructions										

Sequence ID Number									Pos. No. 0200	
Reference Number Segment										
Element ID	Elem Ref #	Sub-Ele Ref #	Field Status	Field Name	Field Type	Length		Field Description		
						Min	Max			
REF01	128		M	Reference Identification Qualifier	ID	2	2	"55" = Sequence ID Number		
REF02	127		X	Reference Identification	AN	1	7	Sequence Number		
REF03	352		X	Description	AN	4	5	Error Response Code		
<b>REF~55~01234\</b>										
Syntax Notes: REF02 is required.										
FTA Notes: REF02 is always required; REF03 is used when responding to an error										
ND Notes: REF03 is not used. See notes on sequence number on page 5-244										

<b>Bill of Lading Date</b>								
<b>Date/Time Reference Segment</b>								<b>Pos. No. 1200</b>
Element ID	Elem Ref. #	Sub-Ele Ref. #	Field Status	Field Name	Field Type	Length		Field Description
						Min	Max	
DTM01	374		M	Date/Time Qualifier	ID	3	3	"095" = Bill of Lading Date
DTM02	373		X	Date	DT	8	8	Bill of Lading Date (CCYYMMDD)
DTM~095~20080122\								
Syntax Notes: DTM02 is required.								
FTA Notes: None								
ND Notes: Include either Bill of Lading Date or Invoice Date – please refer to North Dakota Reporting Instructions								

<b>Bill of Lading Net</b>								
<b>Tax Information and Amount Segment</b>								<b>Pos. No. 1800</b>
Element ID	Elem Ref. #	Sub-Ele Ref. #	Field Status	Field Name	Field Type	Length		Field Description
						Min	Max	
TIA01	817		M	Tax Information ID Number	AN	4	4	"5005" = Net
TIA02 and TIA03 are not used.								
TIA04	380		X	Quantity	R	1	15	Quantity
TIA05	355		M	Unit of Measurement Code	ID	2	2	"GA" = Gallons
TIA~5005~~~8000~GA\								
Syntax Notes: TIA04 is required. If TIA05 is present, then TIA04 is required.								
FTA Notes: None								
ND Notes: Required								

<b>Bill of Lading Gross</b>								
<b>Tax Information and Amount Segment</b>								<b>Pos. No. 1800</b>
Element ID	Elem Ref. #	Sub-Ele Ref. #	Field Status	Field Name	Field Type	Length		Field Description
						Min	Max	
TIA01	817		M	Tax Information ID Number	AN	4	4	"5006" = Gross
TIA02 and TIA03 are not used.								
TIA04	380		X	Quantity	R	1	15	Quantity
TIA05	355		M	Unit of Measurement Code	ID	2	2	"GA" = Gallons
TIA~5006~~~8000~GA\								
Syntax Notes: TIA04 is required. If TIA05 is present, then TIA04 is required.								
FTA Notes: None								
ND Notes: Required								

<b>Bill of Lading Billed</b>								
<b>Tax Information and Amount Segment</b>								<b>Pos. No. 1800</b>
Element ID	Elem Ref. #	Sub-Ele Ref. #	Field Status	Field Name	Field Type	Length		Field Description
						Min	Max	
TIA01	817		M	Tax Information ID Number	AN	4	4	"5007" = Billed
TIA02 and TIA03 are not used.								
TIA04	380		X	Quantity	R	1	15	Quantity
TIA05	355		M	Unit of Measurement Code	ID	2	2	"GA" = Gallons
TIA~5007~~~8000~GA\								
Syntax Notes: TIA04 is required. If TIA05 is present, then TIA04 is required.								
FTA Notes: None								
ND Notes: Optional								

End of FGS loop for Individual shipments.

End of TFS loop for Schedule.

## Transaction Set Trailer Description

End of Transaction Set Trailer Segment							(Required) Pos. No. 0100	
Element ID	Elem Ref #	Sub-Ele Ref #	Field Status	Field Name	Field Type	Length		Field Description
						Min	Max	
SE01	96		M	Number of Included Segments	N0	1	10	Number of segments (inserted by translator)
SE02	329		M	Transaction Set Control Number	AN	4	9	Determined by Filer (same value in ST02, unique control number)
SE~156~10001\								
Syntax Notes: None								
FTA Notes: None								

End of Transaction Set

# Appendix A - North Dakota Schedule Codes

<b>Report Type</b>	<b>Schedule Code</b>	<b>Description</b>
Motor Vehicle Fuel	1	Gallons Received in North Dakota - North Dakota Tax Paid
Motor Vehicle Fuel	2	Gallons Received in North Dakota - North Dakota Tax NOT Paid
Motor Vehicle Fuel	3	Gallons Imported into North Dakota by Your Business
Motor Vehicle Fuel	5	Gallons Sold to Retailers for Resale - North Dakota Tax Paid - Loss Allowance Passed on
Motor Vehicle Fuel	5A	Gallons Sold to Retailers for Resale - North Dakota Tax Paid - No Loss Allowance
Motor Vehicle Fuel	5Q	Gallons Used or Sold to Consumers - North Dakota Tax Paid
Motor Vehicle Fuel	6	Gallons Sold in North Dakota - North Dakota Tax NOT Paid
Motor Vehicle Fuel	7	Gallons Exported by Your Business
Motor Vehicle Fuel	8	Gallons Sold to Agencies of the U.S. Government - North Dakota Tax Exempt (or Credit Taken)
Motor Vehicle Fuel	10	Gallons Sold to Native Americans - North Dakota Tax Exempt
Motor Vehicle Fuel	10G	Gallons Sold out of Tax-Paid Inventory
Special Fuel	1	Gallons Received in North Dakota - North Dakota Tax Paid
Special Fuel	2	Gallons Received in North Dakota - North Dakota Tax NOT Paid
Special Fuel	3	Gallons Imported into North Dakota by Your Business
Special Fuel	5	Gallons Sold for Resale - North Dakota Tax Paid
Special Fuel	5Q	Gallons Used or Sold to Consumers - North Dakota \$.23 per Gallon Tax Paid
Special Fuel	5X	Gallons Used or Sold to Consumers - North Dakota \$.04 per gallon Excise Tax Paid
Special Fuel	5Y	Gallons Used or Sold to Railroads - North Dakota \$.04 per gallon Excise Tax Paid
Special Fuel	6	Gallons Sold in North Dakota - North Dakota Tax NOT Paid
Special Fuel	7	Gallons Exported by Your Business
Special Fuel	8	Gallons Sold to Agencies of the U.S. Government - North Dakota Tax Exempt (or Credit Taken)
Special Fuel	10	Gallons Sold to Native Americans - North Dakota Tax Exempt
Special Fuel	10A	Gallons Sold for Heating Fuel \$.02 per Gallon (Jan 08 thru June 09 – Tax Exempt start Jul 09)
Special Fuel	10G	Gallons Sold out of Tax-Paid Inventory
Aviation Fuel	1	Gallons Received in North Dakota - North Dakota Tax Paid
Aviation Fuel	2	Gallons Received in North Dakota - North Dakota Tax NOT Paid
Aviation Fuel	3	Gallons Imported into North Dakota by your Business
Aviation Fuel	5	Gallons Sold for Resale - North Dakota Tax Paid
Aviation Fuel	5Q	Gallons Used or Sold to Consumers - North Dakota Tax Paid
Aviation Fuel	6	Gallons Sold in North Dakota - North Dakota Tax NOT Paid
Aviation Fuel	7	Gallons Exported by Your Business
Aviation Fuel	8	Gallons Sold to Agencies of the U.S. Government - North Dakota Tax Exempt (or Credit Taken)
Aviation Fuel	10G	Gallons Sold out of Tax-Paid Inventory
Liquefied Petroleum	2	Gallons Received in North Dakota - North Dakota Tax NOT Paid
Liquefied Petroleum	3	Gallons Imported into North Dakota by Your Business
Liquefied Petroleum	5Q	Gallons Used or Sold to Consumers - North Dakota \$.23 per Gallon Tax Paid
Liquefied Petroleum	5X	Gallons Used or Sold to Consumers - North Dakota 2% Excise Tax Paid

Liquefied Petroleum	6	Gallons Sold in North Dakota for resale- North Dakota Tax NOT Paid
Liquefied Petroleum	7	Gallons Exported by Your Business
Liquefied Petroleum	8	Gallons Sold to Agencies of the U.S. Government - North Dakota Tax Exempt (or Credit Taken)
Liquefied Petroleum	10	Gallons Sold to Agencies of the U.S. Government - North Dakota Tax Exempt (or Credit Taken)
Liquefied Petroleum	10A	Gallons Sold for Heating Fuel 1% (Jan 08 thru June 09 – Tax Exempt start Jul 09)
Terminal Operator	15A	Terminal Operator Schedule of Receipts
Terminal Operator	15B	Terminal Operator Schedule of Disbursements

---

# Appendix B - North Dakota Product Codes

<b>Product Code</b>	<b>Description</b>
054	Propane
065	Gasoline
072	Kerosene - Dyed
091	Waste Oil
122	Blending Components
124	Gasohol
125	Aviation Gasoline
130	Jet Fuel
142	Kerosene - Undyed
160	Diesel Fuel - Undyed
224	Compressed Natural Gas (CNG)
228	Diesel Fuel - Dye added
241	Ethanol-Alcohol
243	Methanol
284	BioDiesel – Undyed (B100)
285	Soy Oil
290	Biodiesel – Dye Added (B100)

# Appendix C - Summary Codes / TIA Codes

## Summary Code and TIA Code Usage

Summary and TIA codes are used for the following purposes (See complete list of codes below.):

### 813 Map

1. Header – TIA code 5000 defines the version/publication number of the taxing authority’s EC Implementation Guide. TIA code 5001 (Total Net Reported) is a check value for determining if all information is included in the EDI file.
2. TOR – Terminal Operator Report or SDR - Supplier/Distributor Report - TIA code 5002 (Physical Inventory) is used to report Ending and/or Beginning Inventory.
3. SDR – Supplier/Distributor Report – TIA code 5003 (Total Due) is a check value used to acknowledge and validate tax liability or taxable gallons.
4. CCR – Common Carrier Report – TIA code 5004 (Total Net Transported) is a check value used to acknowledge and validate the report.
5. SUM - Summary Code and TIA codes are used for identifying information not found in schedules or able to be derived from the schedules. The SUM loop provides a looping structure allowing multiple TIAs in a uniform format
6. Schedules – TIA 5005 (Net), 5006 (Gross) and 5007 (Billed) are used to report bill of lading volume details or further define summary detail.
7. Summary codes are defined and utilized for both quantity and money. The TIA segment of the summary has elements for both quantity and monetary values.

## Summary Codes

---

### **S01 Inventory**

- S01A Net Gains / Losses
- S01B Casualty Loss
- S01C Product Transfer – Disbursement
- S01D Product Transfer – Receipt
- S01E Meter Test – Disbursement
- S01F Meter Test - Receipt

### **S02 Taxes / Fees**

- S02A Tax
- S02B Transfer / Lust Fee
- S02C Inspection Fee
- S02D Other Environmental Fee
- S02E Gaseous Permit Fee

### **S03 Credit**

- S03A Tax Credit
  - S03A01 Collection Allowance (IN – February 2002)
- S03B Fee Credit
  - S03B01 Transfer Fee Credit (MO – September 2001)
  - S03B02 Inspection Fee Credit (MO – September 2001)
- S03C Allowance

### **S04 Bad Debt Write-off**

- S04A Tax Bad Debt Write-off
  - S04B Fee Bad Debt Write-off
-

**S05 General Report**

- S05A Gallons/Liters Refined, Distilled or produced
- S05B Petroleum product repackaged into containers of 55 gallons or less
- S05C Ethanol Blended with Gasoline
- S05D Product Delivered
- S05E Other petroleum products first sold, offered for sale, or used in Nebraska
- S05F Total gallons of Motor Vehicle fuel first sold, offered for sale or used in Nebraska.
- S05G Untaxed diesel used in a licensed vehicle
- S05H Kerosene blended with diesel and used in a licensed vehicle
- S05I Other exempt removals (CA – May 2001)
- S05K Sales Price of Taxable Gallons (ND – January 2004)  
(Sales Price of 2% Taxable Gallons)
- S05L Taxable sales gallons multiplied by the average sales price for a defined period (ND – Jan. 2004)  
(Sales Price of 1% Taxable Gallons)

**FTA Uniformity TIA Codes**

The data represented by these TIA codes is not derivable from schedules or represents a check value.		
5000	Version of taxing authority's implementation guide	Header
5001	Total Net Reported	Header
5002	Net Physical Inventory	TOR, SDR
5003	Total Due	SDR
5004	Total Net Transported	CCR
5005	Net	SCH, SUM
5006	Gross	SCH, SUM
5007	Billed	SCH, SUM
5008	Interest	SUM
5009	Penalty	SUM
5010	Confidential Information	Header
5011-5199	<b>Not used</b>	

# Appendix D - Transaction Type Mode Codes

North Dakota Transaction Type Mode Codes	
Code	Description
B	Barge
J	Truck
R	Railroad
PL	Pipeline
S	Ship
GS	Gas Station
CE	Summary Information

The X12 standard requires 2 characters in the field using this code. When a single character is used, left justify and pad with a space.

# **Appendix E - USA States, Canadian Provinces/ Territories and Mexican States Codes**

<b>United States of America (US) State</b>	<b>Abbreviation</b>	<b>Canadian (CA) Province/Territory</b>	<b>Abbreviation</b>
Alabama	AL	Alberta	AB
Alaska	AK	British Columbia	BC
Arizona	AZ	Manitoba	MB
Arkansas	AR	New Brunswick	NB
California	CA	Newfoundland	NF
Colorado	CO	Northwest Territory	NT
Connecticut	CT	Nova Scotia	NS
Delaware	DE	Nunavut	NU
District of Columbia	DC	Ontario	ON
Florida	FL	Prince Edward Island	PE
Georgia	GA	Quebec	QC
Hawaii	HI	Saskatchewan	SK
Idaho	ID	Yukon Territory	YT
Illinois	IL		
Indiana	IN	<b>Mexican (MX) State</b>	<b>Abbreviation</b>
Iowa	IA	Aguascalientes	AG
Kansas	KS	Baja California	BJ
Kentucky	KY	Baja California Sur	BS
Louisiana	LA	Campeche	CP
Maine	ME	Chiapas	CH
Maryland	MD	Chihuahua	CI
Massachusetts	MA	Coahuila	CU
Michigan	MI	Colima	CL
Minnesota	MN	Distrito Federal	DF
Mississippi	MS	Durango	DG
Missouri	MO	Guanajuato	GJ
Montana	MT	Guerrero	GR
Nebraska	NE	Hidalgo	HG
Nevada	NV	Jalisco	JA
New Hampshire	NH	Mexico	EM
New Jersey	NJ	Michoacan	MH
New Mexico	NM	Morelos	MR
New York	NY	Nayarit	NA
North Carolina	NC	Nuevo Leon	NL
North Dakota	ND	Oaxaca	OA
Ohio	OH	Puebla	PU
Oklahoma	OK	Queretaro	QA
Oregon	OR	Quintana Roo	QR
Pennsylvania	PA	San Luis Potosi	SL
Rhode Island	RI	Sinaloa	SI
South Carolina	SC	Sonora	SO
South Dakota	SD	Tabasco	TA
Tennessee	TN	Tamaulipas	TM
Texas	TX	Tlaxcala	TL
Utah	UT	Veracruz	VZ
Vermont	VT	Yucatan	YC
Virginia	VA	Zacatecas	ZT
Washington	WA		
West Virginia	WV		
Wisconsin	WI		
Wyoming	WY		

# Appendix F - E-File Registration

Please see form on following page.



## State of North Dakota Office of State Tax Commissioner

### Registration Application for Electronic Filing

Taxpayer Information			
Taxpayer Name	Federal ID	Fax Number	
Street or Other Mailing Address	City	State	Zip Code
Business Contact Name and Telephone Number ( )	Business Contact E-mail Address		
Technical Contact Name and Telephone Number ( )	Technical Contact E-mail Address		
Electronic Filing			
Electronic Filing Forms and Reports (Check all that apply):			
<input type="checkbox"/> Aviation Fuel	<input type="checkbox"/> Liquefied Petroleum Gas	<input type="checkbox"/> Motor Vehicle Fuel	<input type="checkbox"/> Special Fuel <input type="checkbox"/> Terminal Operator
Agreement to Electronically File			

This agreement is entered into by the Tax Commissioner and the above named taxpayer for purposes of authorizing the taxpayer to electronically file the returns and reports required under North Dakota Century Code chs. 57-43.1, 57-43.2, and 57-43.3.

Taxpayer agrees as follows:

1. The signature of the taxpayer affixed to this agreement shall be deemed to appear on such electronically filed reports or returns, as if actually so appearing. All returns and reports filed electronically pursuant to this agreement are deemed by taxpayer to be truthful, accurate and complete statements made under penalty of perjury.
2. If any person, whose signature appears as the authorized agent of the taxpayer, leaves the employment of the taxpayer or becomes no longer authorized to sign reports or returns for the taxpayer, the Tax Commissioner must be immediately notified of this fact. No taxpayer liable for tax, penalty, or interest shall be relieved of liability with respect to any report or return required to be filed prior to the Tax Commissioner's notification. Taxpayer must execute a new agreement to include the signature of another authorized agent.
3. Taxpayer's electronically filed returns and reports shall be in a form compatible with the Tax Commissioner's equipment, software, and facilities.
4. Taxpayer's electronically filed returns and reports shall be submitted in accordance with the Tax Commissioner's rules and electronic filing standards.
5. Taxpayer shall be responsible for the costs to file its returns and reports electronically to the Tax Commissioner.
6. Any electronic filing not in conformity with the requirements specified herein shall be deemed a failure to file such return or report and taxpayer shall be subject to all applicable penalties prescribed by law.
7. The place of performance of this agreement shall be Bismarck, North Dakota, and the agreement shall be governed by North Dakota law.

**Sign Here**

\_\_\_\_\_

Authorized Signature

\_\_\_\_\_

Date

\_\_\_\_\_

Title

\_\_\_\_\_

Telephone Number

Please return this form to: Motor Fuel Tax Section, North Dakota Office of State Tax Commissioner, 600 E. Boulevard Avenue, Bismarck, North Dakota 58505-0599. If you have any questions, call (701) 328-3382.

# Appendix G - Amended Reports

## **What is an amended report?**

An amended report is any data reported to the Tax Commissioner that adjusts or corrects an original tax filing.

## **How should I file an amended report?**

The amendment indicator “CO” = Corrected must be used in BTI14 for an amended report file. Amended reports require a complete replacement of the information for a reporting period.

## **Can I put amendments for different periods in one envelope?**

Yes, amendments for different periods (i.e, separate ST/SE loops) may be submitted in the same or in separate envelopes.

## **Sometimes our back-office systems process a schedule transaction with a bill of lading date for the previous filing period, but we have already filed that report with the Commissioner’s Office. How should we handle these late loads?**

You do not have to amend the previous filing period for late loads. Include those out-of-period transactions in the current filing period. However, loads from prior periods may require amended reports.

# Appendix H - Sample EDI Files

## Motor Vehicle Fuel Tax Report (SDR)

Each Motor Vehicle Fuel Report should be within one ST/SE loop.

```
ISA~00~      ~00~      ~ZZ~123456789  ~ZZ~ND0      ~080216~1619~|~00403~000001762~0~T~^\
GS~TF~12345678~ND813050CP~20080216~161945~1762~X~004030\
ST~813~2401~1\
BTI~T6~050~47~ND~20080216~FUEL~24~123456789~49~1234~00\
DTM~194~20080131\
TIA~5001~95990~GA\
N1~TP~Fuel Company\
N3~1234 Any Street~P.O. Box 47\
N4~Bismarck~ND~33311~US\
PER~CN~G.C. Smith~TE~2225551111~FX~2225552222~EM~Gen.Contact@FuelCo.com\
PER~EA~E.C. Jones~TE~2225551111~FX~2225552222~EM~EDI.Coord@FuelCo.com\
TFS~T2~SDR\
REF~55~1\
DTM~184~200080131\
TIA~5003~3230.86~95990~GA\
FGS~EI~PG~054\
REF~55~2\
TIA~5002~400~GA\
FGS~EI~PG~065\
REF~55~3\
TIA~5002~300~GA\
TFS~T3~S02C~94~CE\
REF~55~4\
FGS~S\
REF~55~5\
TIA~5005~3.98\
TFS~T3~S03C~94~CE\
REF~55~6\
FGS~S\
REF~55~7\
TIA~5005~66.82\
TFS~T3~S02A~94~CE\
REF~55~8\
FGS~S\
REF~55~9\
TIA~5008~0.00\
TIA~5009~0.00\
TFS~T3~1~PG~065~94~PL\
REF~55~10\
N1~SF~ND\
N4~MANDAN~ND\
N1~SE~FUELSELLER~24~11133311174\
N1~CA~FUEL CARRIER~24~999999999\
N1~DT~TC~T45ND9999\
FGS~D~BM~150034\
REF~55~11\
DTM~095~200080122\
TIA~5005~37000~GA\
TIA~5006~37000~GA\
TIA~5007~37000~GA\
FGS~D~BM~456371\
REF~55~12\
```

DTM~095~200080122\  
 TIA~5005~~~43000~GA\  
 TIA~5006~~~43000~GA\  
 TIA~5007~~~43000~GA\  
 TFS~T3~5~PG~065~94~J\  
 REF~55~13\  
 N1~OT~~TC~T45ND9999\  
 N1~CA~FUEL TRANSPORTER~24~999999999\  
 N1~BY~BUYER AB~24~12312312370\  
 N1~ST~ND\  
 N4~MANDAN~ND\  
 FGS~D~BM~430023\  
 REF~55~14\  
 DTM~095~200080101\  
 TIA~5005~~~8000~GA\  
 TIA~5006~~~8000~GA\  
 TIA~5007~~~8000~GA\  
 FGS~D~BM~43567\  
 REF~55~15\  
 DTM~095~200080101\  
 TIA~5005~~~7990~GA\  
 TIA~5006~~~7990~GA\  
 TIA~5007~~~7990~GA\  
 SE~79~2401\  
 GE~1~1762\  
 IEA~1~000001762\

**Motor Vehicle Fuel Tax Report (SDR) – No Activity (Zero Report)**

ISA~00~ ~00~ ~ZZ~123456789 ~ZZ~ND0 ~080219~0926~|~00403~000001763~0~T~^\  
 GS~TF~12345678~ND813050CP~20080219~092700~1763~X~004030\  
 ST~813~2402~1\  
 BTI~T6~050~47~ND~20080219~FUEL~24~123456789~49~1234~~~00\  
 DTM~194~20080131\  
 TIA~5001~~~0~GA\  
 N1~TP~Fuel Company\  
 N3~1234 Any Street~P.O. Box 47\  
 N4~Bismarck~ND~33311~US\  
 PER~CN~G.C. Smith~TE~2225551111~FX~2225552222~EM~Gen.Contact@FuelCo.com\  
 PER~EA~E.C. Jones~TE~2225551111~FX~2225552222~EM~EDI.Coord@FuelCo.com\  
 TFS~T2~SDR\  
 REF~55~1\  
 REF~BE~1\  
 SE~13~2402\  
 GE~1~1763\  
 IEA~1~000001763\

## Special Fuel Tax Report (SDR)

Each Special Fuel Tax Report should be within one ST/SE loop.

ISA~00~ ~00~ ~ZZ~123456789 ~ZZ~ND0 ~080206~1532~|~00403~000001786~0~T~^\  
GS~TF~12345678~ND813050CP~20080206~153247~1786~X~004030\  
ST~813~2428~1\  
BTI~T6~050~47~ND~20080206~FUEL~24~123456789~49~1230~00\  
DTM~194~20080131\  
TIA~5001~46010~GA\  
N1~TP~Fuel Company\  
N3~1234 Any Street~P.O. Box 47\  
N4~Bismarck~ND~33311~US\  
PER~EA~G.C. Smith~TE~2223445555~FX~2234234233~EM~Gen.Contact@FuelCo.com\  
PER~CN~E.C. Jones~TE~2223443333~FX~2234234233~EM~EDI.Coord@FuelCo.com\  
TFS~T2~SDR\  
REF~55~1\  
DTM~184~20080131\  
TIA~5003~1300.00~46010~GA\  
TFS~T3~S02C~94~CE\  
REF~55~2\  
FGS~S\  
REF~55~3\  
TIA~5005~8.75\  
TFS~T3~S03C~94~CE\  
REF~55~4\  
FGS~S\  
REF~55~5\  
TIA~5005~13.00\  
TFS~T3~S02A~94~CE\  
REF~55~6\  
FGS~S\  
REF~55~7\  
TIA~5008~0.00\  
TIA~5009~0.00\  
TFS~T3~S01C~PG~160~94~CE\  
REF~55~8\  
FGS~S\  
REF~55~9\  
TIA~5006~8020~GA\  
TFS~T3~S01D~PG~228~94~CE\  
REF~55~10\  
FGS~S\  
REF~55~11\  
TIA~5006~7990~GA\  
TFS~T3~10A~PG~228~94~R \  
REF~55~12\  
N1~OT~TC~T45ND9999\  
N1~CA~FUEL CARRIER~24~999999999\  
N1~BY~BUYER ABC~24~12312312370\  
N1~ST~ND\  
N4~MANDAN~ND\  
FGS~D~BM~78522\  
REF~55~13\  
DTM~095~20080125\  
TIA~5005~5000~GA\  
TIA~5006~5000~GA\  
TIA~5007~5000~GA\  
TFS~T3~5X~PG~228~94~R \  
REF~55~14\  
N1~OT~TC~T45ND9999

N1~CA~FUEL CARRIER~24~999999999\  
N1~BY~BUYER AB~24~12312312370\  
N1~ST~ND\  
N4~MANDAN~ND\  
FGS~D~BM~78877\  
REF~55~15\  
DTM~095~20080130\  
TIA~5005~~~30000~GA\  
TIA~5006~~~30000~GA\  
TIA~5007~~~30000~GA\  
SE~63~2428\  
GE~1~1786\  
IEA~1~000001786\

## Liquefied Petroleum Gas Tax Report (SDR)

Each Liquefied Petroleum Gas Report should be within one ST/SE loop.

ISA~00~ ~00~ ~ZZ~123456789 ~ZZ~ND0 ~080206~1615~|~00403~000001787~0~T~^\  
GS~TF~12345678~ND813050CP~20080206~161604~1787~X~004030\  
ST~813~2429~1\  
BTI~T6~050~47~ND~20080206~FUEL~24~123456789~49~1236~00\  
DTM~194~20080131\  
TIA~5001~38000~GA\  
N1~TP~Fuel Company\  
N3~1234 Any Street~P.O. Box 47\  
N4~Bismarck~ND~33311~US\  
PER~EA~G.C. Smith~TE~2223445555~FX~2234234233~EM~Gen.Contact@FuelCo.com\  
PER~CN~E.C. Jones~TE~2223443333~FX~2234234233~EM~EDI.Coord@FuelCo.com\  
TFS~T2~SDR\  
REF~55~1\  
DTM~184~20080131\  
TIA~5003~440.00~44000~GA\  
FGS~EI~PG~054\  
REF~55~2\  
TIA~5002~52000~GA\  
TFS~T3~S03C~94~CE\  
REF~55~3\  
FGS~S\  
REF~55~4\  
TIA~5005~4.40\  
TFS~T3~S05K~PG~054~94~CE\  
REF~55~5\  
FGS~S\  
REF~55~6\  
TIA~5005~320.00\  
TFS~T3~S05L~PG~054~94~CE\  
REF~55~7\  
FGS~S\  
REF~55~8\  
TIA~5005~120.00\  
TFS~T3~S02A~94~CE\  
REF~55~9\  
FGS~S\  
REF~55~10\  
TIA~5008~0.00\  
TIA~5009~0.00\  
TFS~T3~3~PG~054~94~R \  
REF~55~11\  
N1~OT~TC~T39WI9999\  
N1~SE~SELLER X~24~55544455575\  
N1~CA~FUEL CARRIER~24~999999999\  
N1~DT~TC~T45ND9999\  
FGS~D~BM~112244\  
REF~55~12\  
DTM~095~20080114\  
TIA~5005~30000~GA\  
TIA~5006~30000~GA\  
TIA~5007~30000~GA\  
TFS~T3~10A~PG~054~94~J \  
REF~55~13\  
N1~OT~TC~T45ND9999\  
N1~CA~FUEL TANKERS INC~24~999999999\  
N1~BY~BUYER ABCD~24~333322211170\

N1~ST~ND\  
N4~BISMARCK~ND\  
FGS~D~BM~777888\  
REF~55~14\  
DTM~095~20080119\  
TIA~5005~~~6000~GA\  
TIA~5006~~~6000~GA\  
TIA~5007~~~6000~GA\  
TFS~T3~5X~PG~054~94~J\  
REF~55~15\  
N1~OT~~TC~T45ND9999\  
N1~CA~FUEL TANKERS INC~24~999999999\  
N1~BY~BUYER ABC~24~333322211170\  
N1~ST~ND\  
N4~BISMARCK~ND\  
FGS~D~BM~888999\  
REF~55~16\  
DTM~095~20080119\  
TIA~5005~~~8000~GA\  
TIA~5006~~~8000~GA\  
TIA~5007~~~8000~GA\  
SE~58~2429\  
GE~1~1787\  
IEA~1~000001787\

## Aviation Fuel Tax Report (SDR)

Each Aviation Fuel Report should be within one ST/SE loop.

ISA~00~ ~00~ ~ZZ~123456789 ~ZZ~ND0 ~080207~0955~|~00403~000001788~0~T~^\  
GS~TF~12345678~ND813050CP~20080207~095529~1788~X~004030\  
ST~813~2430~1\  
BTI~T6~050~47~ND~20080207~FUEL~24~123456789~49~1239~00\  
DTM~194~20080131\  
TIA~5001~46000~GA\  
N1~TP~Fuel Company\  
N3~1234 Any Street~P.O. Box 47\  
N4~Bismarck~ND~33311~US\  
PER~EA~G.C. Smith~TE~2223445555~FX~2234234233~EM~Gen.Contact@FuelCo.com\  
PER~CN~E.C. Jones~TE~2223443333~FX~2234234233~EM~EDI.Coord@FuelCo.com\  
TFS~T2~SDR\  
REF~55~1\  
DTM~184~20080131\  
TIA~5003~55.67~46000~GA\  
FGS~EI~PG~130\  
REF~55~2\  
TIA~5002~21500~GA\  
TFS~T3~S03C~94~CE\  
REF~55~3\  
FGS~S\  
REF~55~4\  
TIA~5005~0.00\  
TFS~T3~S02A~94~CE\  
REF~55~5\  
FGS~S\  
REF~55~6\  
TIA~5008~0.00\  
TIA~5009~0.00\  
TFS~T3~1~PG~130~94~R \  
REF~55~7\  
N1~SF~ND\  
N4~BISMARCK~ND\  
N1~SE~SELLER X~24~55544455575\  
N1~CA~FUEL CARRIER~24~999999999\  
N1~DT~TC~T45ND9999\  
FGS~D~BM~125\  
REF~55~8\  
DTM~095~20080103\  
TIA~5005~30000~GA\  
TIA~5006~30000~GA\  
TIA~5007~30000~GA\  
TFS~T3~8~PG~130~94~J \  
REF~55~9\  
N1~OT~TC~T45ND9999\  
N1~CA~FUEL TRANSPORTER~24~999999999\  
N1~BY~BUYER AB~24~12312312370\  
N1~ST~ND\  
N4~BISMARCK~ND\  
FGS~D~BM~127\  
REF~55~10\  
DTM~095~20080110\  
TIA~5005~8000~GA\  
TIA~5006~8000~GA\  
TIA~5007~8000~GA

FGS~D~BM~128\  
REF~55~11\  
DTM~095~20080110\  
TIA~5005~~~8000~GA\  
TIA~5006~~~8000~GA\  
TIA~5007~~~8000~GA\  
SE~65~2430\  
GE~1~1788\  
IEA~1~000001788\

## Terminal Operator Report (TOR)

Each Terminal Operator Report should be within on ST/SE loop.

ISA~00~ ~00~ ~ZZ~123456789 ~ZZ~ND0 ~080206~1448~|~00403~000001782~0~T~^\  
GS~TF~12345678~ND813050CP~20080206~144850~1782~X~004030\  
ST~813~2425~1\  
BTI~T6~050~47~ND~20080206~FUEL~24~123456789~49~1235~00\  
DTM~194~20080131\  
TIA~5001~54000~GA\  
N1~TP~Fuel Company\  
N3~1234 Any Street~P.O. Box 47\  
N4~Bismarck~ND~33311~US\  
PER~EA~G.C. Smith~TE~2223445555~FX~2234234233~EM~Gen.Contact@FuelCo.com\  
PER~CN~E.C. Jones~TE~2223443333~FX~2234234233~EM~EDI.Coord@FuelCo.com\  
TFS~T2~TOR~TC~T45ND8888\  
REF~55~2\  
DTM~184~20080131\  
FGS~EI~PG~125\  
REF~55~3\  
TIA~5002~0~GA\  
TFS~T2~TOR~TC~T45ND9999\  
REF~55~4\  
REF~BE~1\  
TFS~T3~15A~PG~125~94~PL\  
REF~55~5\  
N1~OT~TC~T45ND5555\  
N1~ON~POSITION HOLDER II~24~77788899973\  
N1~CA~FUEL CARRIER~24~999999999\  
N1~DT~TC~T45ND8888\  
FGS~D~BM~12343\  
REF~55~6\  
DTM~095~20080122\  
TIA~5005~38000~GA\  
TIA~5006~38000~GA\  
TIA~5007~38000~GA\  
TFS~T3~15B~PG~125~94~J\  
REF~55~7\  
N1~OT~TC~T45ND8888\  
N1~ON~POSITION HOLDER I~24~33344433388\  
N1~CA~FUEL TRANSPORTER~24~999999999\  
N1~BY~BUYER ABCD~24~23423423400\  
N1~ST~ND\  
N4~BISMARCK~ND\  
FGS~D~BM~110022\  
REF~55~8\  
DTM~095~20080128\  
TIA~5005~8000~GA\  
TIA~5006~8000~GA\  
TIA~5007~8000~GA\  
FGS~D~BM~7677\  
REF~55~9\  
DTM~095~20080128\  
TIA~5005~8000~GA\  
TIA~5006~8000~GA\  
TIA~5007~8000~GA\  
SE~51~2425\  
GE~1~1782\  
IEA~1~000001782\