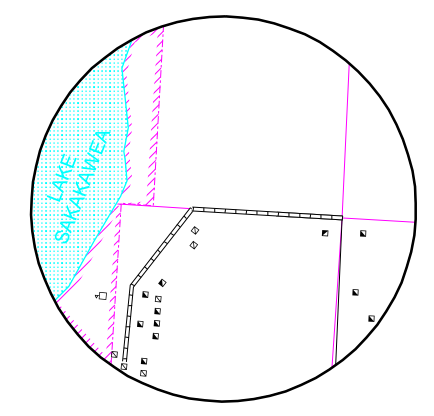
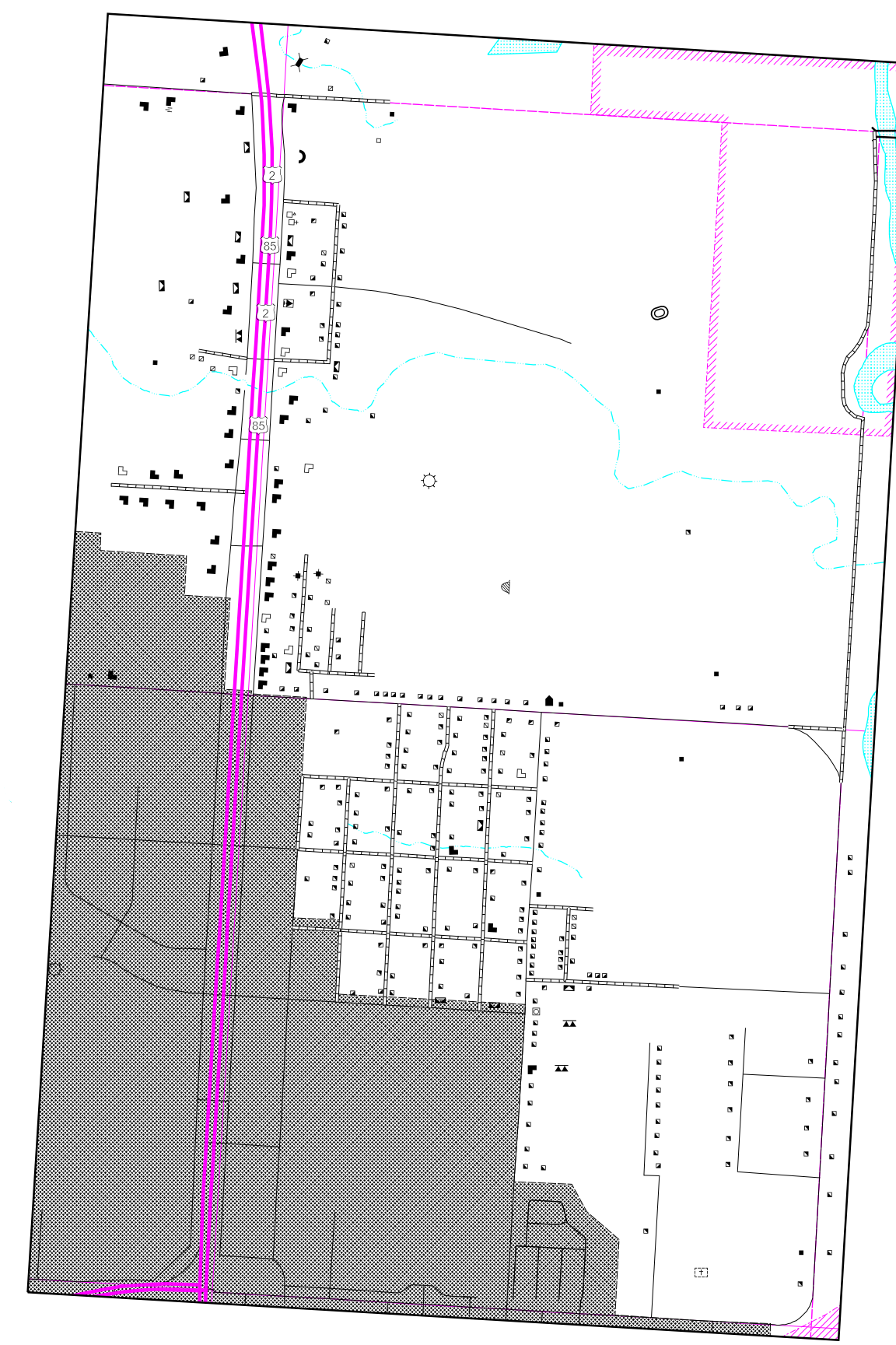
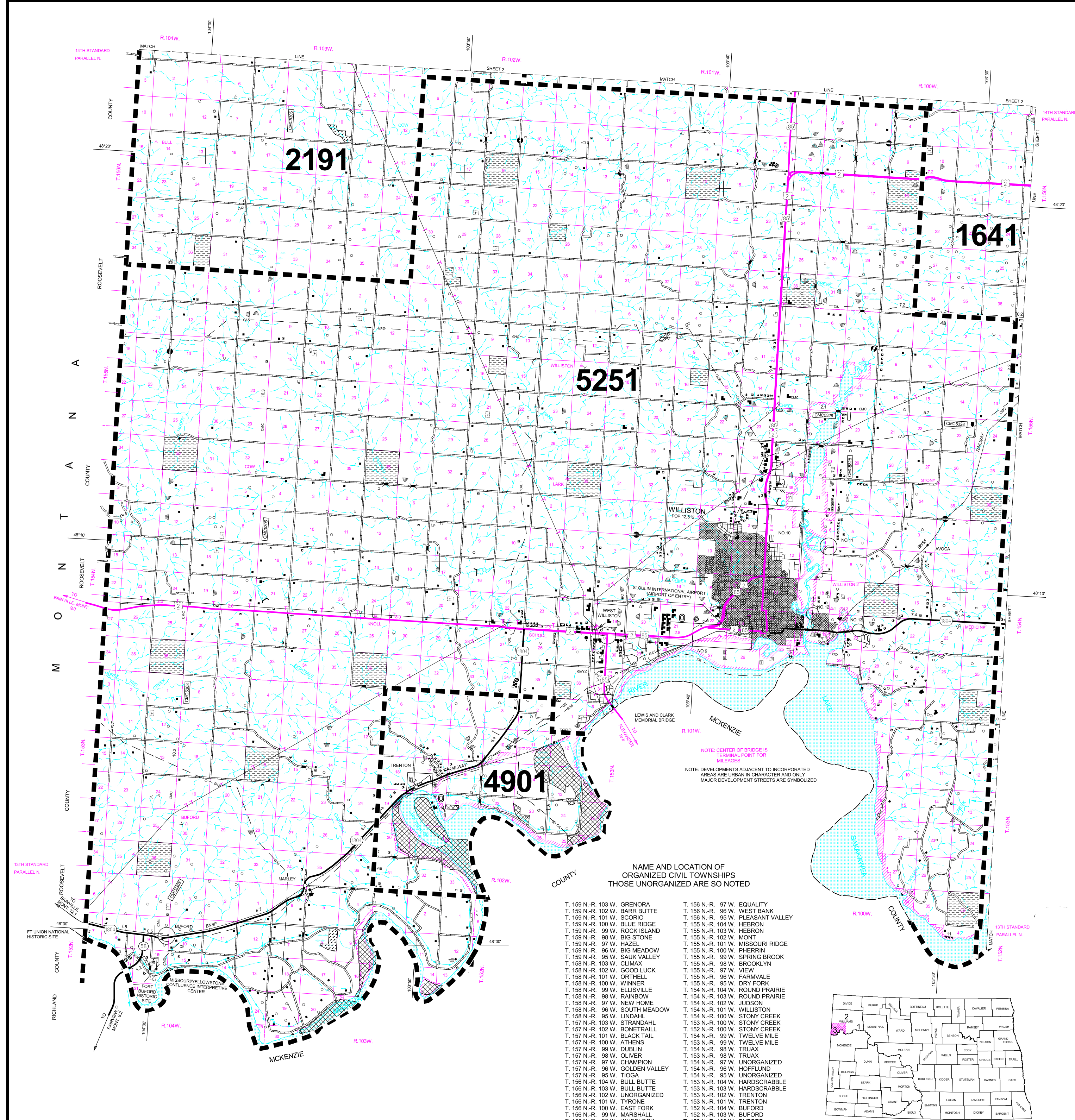
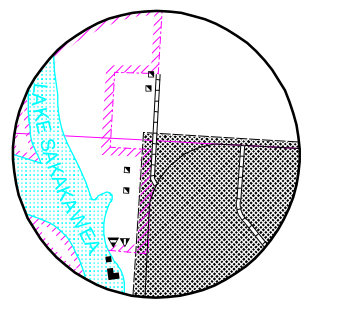


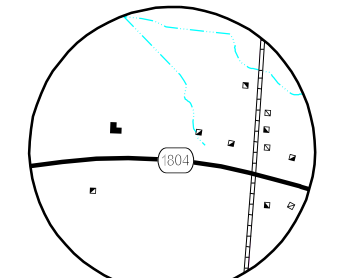
1994 COUNTY FIRE DISTRICT MAP



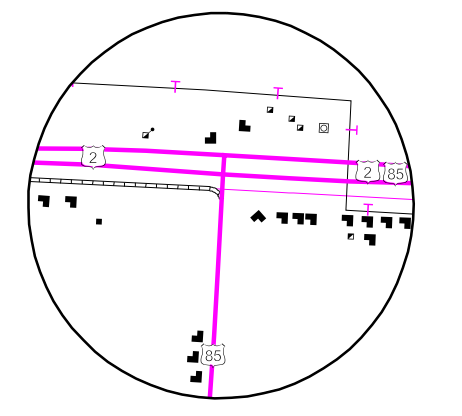
INSET NO. 11
SECS. 5, 6, 7 & 8, T. 154 N., R. 100 W.



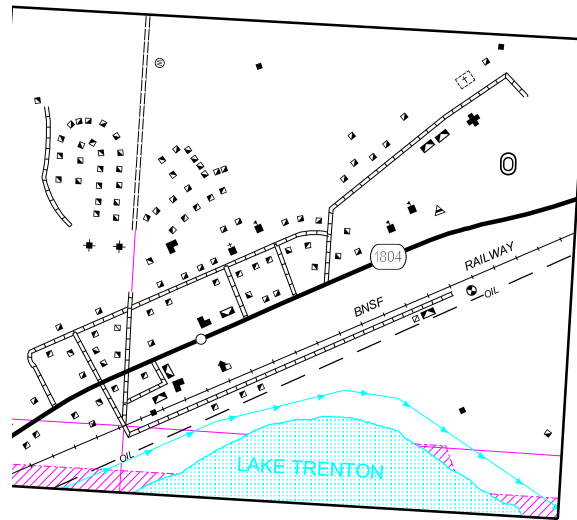
INSET NO. 12
SECS. 18 & 19, T. 154 N., R. 100 W.



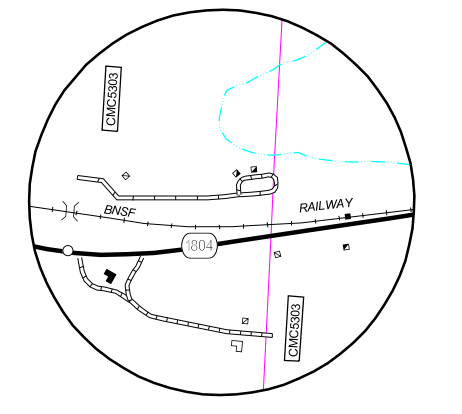
INSET NO. 13
SECS. 20 & 21, T. 154 N., R. 100 W.



WEST WILLISTON
SECS. 19 & 30, T. 154 N., R. 101 W.

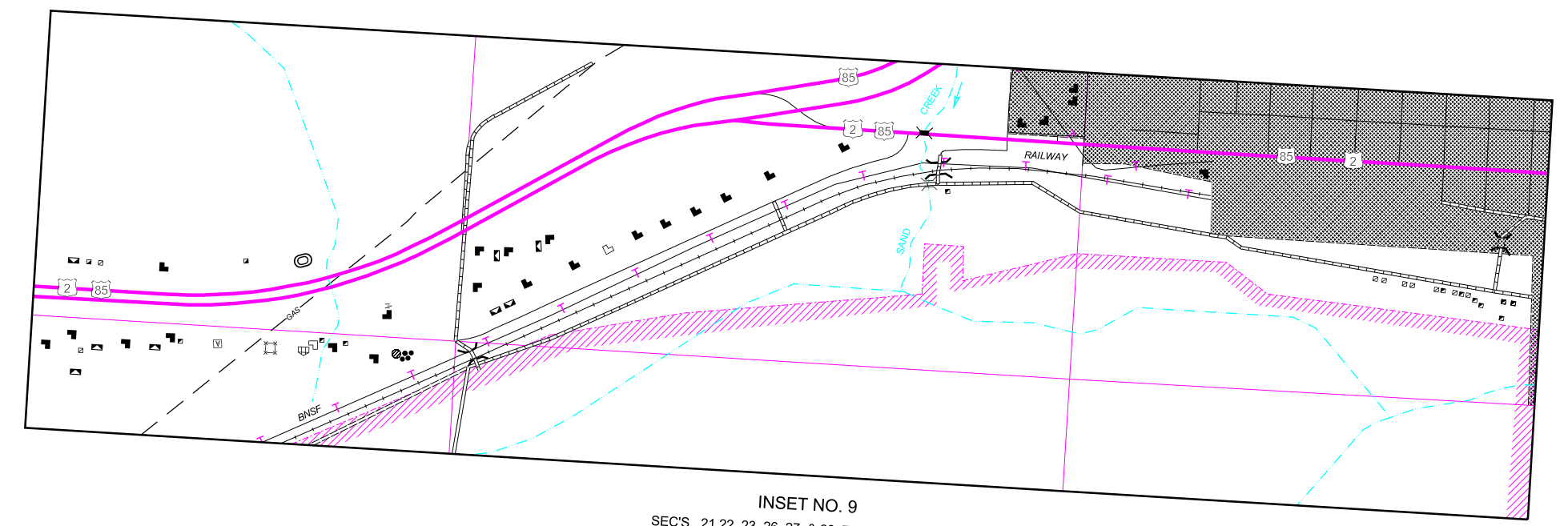


TRENTON
SECS. 17, 18, 19 & 20, T. 153 N., R. 102 W.



BUFORD
SECS. 9 & 10, T. 152 N., R. 104 W.

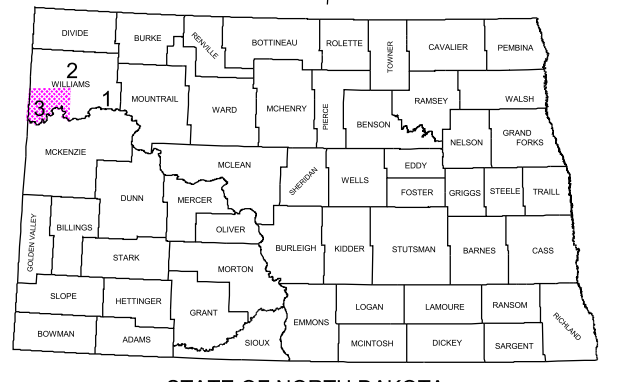
SECS. 6, 7 & 10, T. 154 N., R. 101 W.
SECS. 35 & 36, T. 155 N., R. 101 W.
SECS. 31, T. 155 N., R. 100 W.



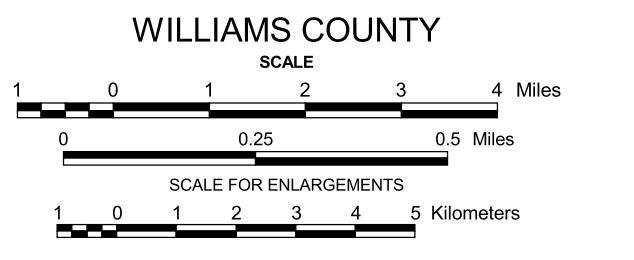
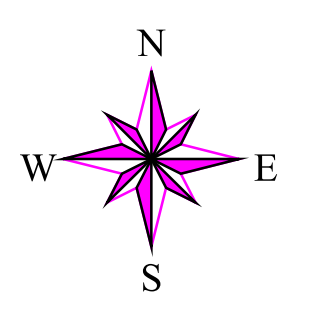
INSET NO. 9
SECS. 21, 22, 23, 26, 27 & 28, T. 154 N., R. 101 W.

NAME AND LOCATION OF ORGANIZED CIVIL TOWNSHIPS THOSE UNORGANIZED ARE SO NOTED

- | | |
|----------------------------------|------------------------------------|
| T. 159 N.-R. 103 W. GRENORA | T. 156 N.-R. 97 W. EQUALITY |
| T. 159 N.-R. 102 W. BARR BUTTE | T. 156 N.-R. 96 W. WEST BANK |
| T. 159 N.-R. 101 W. SCORIO | T. 156 N.-R. 95 W. PLEASANT VALLEY |
| T. 159 N.-R. 100 W. BLUE RIDGE | T. 155 N.-R. 104 W. HEBRON |
| T. 159 N.-R. 99 W. ROCK ISLAND | T. 155 N.-R. 103 W. HEBRON |
| T. 159 N.-R. 98 W. BIG STONE | T. 155 N.-R. 102 W. MONT |
| T. 159 N.-R. 97 W. HAZEL | T. 155 N.-R. 101 W. MISSOURI RIDGE |
| T. 159 N.-R. 96 W. BIG MEADOW | T. 155 N.-R. 100 W. PHERRIN |
| T. 159 N.-R. 95 W. SAIK VALLEY | T. 155 N.-R. 99 W. SPRING BROOK |
| T. 158 N.-R. 103 W. CLIMAX | T. 155 N.-R. 98 W. BROOKLYN |
| T. 158 N.-R. 102 W. GOOD LUCK | T. 155 N.-R. 97 W. VIEW |
| T. 158 N.-R. 101 W. ORTHELL | T. 155 N.-R. 96 W. FARMVALE |
| T. 158 N.-R. 100 W. WINNER | T. 154 N.-R. 104 W. ROUND PRAIRIE |
| T. 158 N.-R. 99 W. ELLISVILLE | T. 154 N.-R. 103 W. JUDSON |
| T. 158 N.-R. 98 W. RAINBOW | T. 154 N.-R. 102 W. WILLISTON |
| T. 158 N.-R. 97 W. NEW HOME | T. 154 N.-R. 101 W. STONY CREEK |
| T. 158 N.-R. 96 W. SOUTH MEADOW | T. 154 N.-R. 100 W. STONY CREEK |
| T. 157 N.-R. 103 W. STRANDDAHL | T. 154 N.-R. 99 W. TWELVE MILE |
| T. 157 N.-R. 102 W. BONETRAILL | T. 153 N.-R. 99 W. TWELVE MILE |
| T. 157 N.-R. 101 W. BLACK TAIL | T. 153 N.-R. 98 W. TRUAX |
| T. 157 N.-R. 100 W. ATHENS | T. 153 N.-R. 97 W. UNORGANIZED |
| T. 157 N.-R. 99 W. DUBLIN | T. 153 N.-R. 96 W. HOFFLUND |
| T. 157 N.-R. 98 W. OLIVER | T. 153 N.-R. 95 W. UNORGANIZED |
| T. 157 N.-R. 97 W. CHAMPION | T. 153 N.-R. 94 W. HARDSCRABBLE |
| T. 157 N.-R. 96 W. GOLDEN VALLEY | T. 153 N.-R. 103 W. HARDSCRABBLE |
| T. 157 N.-R. 95 W. TIOPA | T. 153 N.-R. 102 W. TRENTON |
| T. 156 N.-R. 104 W. BULL BUTTE | T. 153 N.-R. 101 W. TRENTON |
| T. 156 N.-R. 103 W. BULL BUTTE | T. 152 N.-R. 104 W. BUFORD |
| T. 156 N.-R. 102 W. UNORGANIZED | T. 152 N.-R. 103 W. BUFORD |
| T. 156 N.-R. 101 W. TYRONEN | T. 152 N.-R. 102 W. BUFORD |
| T. 156 N.-R. 100 W. EAST FORK | |
| T. 156 N.-R. 99 W. MARSHALL | |
| T. 156 N.-R. 98 W. WHELOCK | |



- 1641 - EPPING F/P DISTRICT
 - 2191 - GRENORA F/P DISTRICT
 - 4901 - TRENTON F/P DISTRICT
 - 5251 - WILLISTON F/P DISTRICT
- CITY FIRE DEPARTMENTS
- 5250 - WILLISTON FIRE DEPT



2003

COPIES OF THIS MAP ARE AVAILABLE FOR PUBLIC USE AT A NOMINAL COST FROM:
ADDRESS: MAP SALES, N.D. DEPT. OF TRANSPORTATION, 608 E. BLVD. AVE., BISMARCK, N.D. 58505-0700

BASED ON AERIAL PHOTOGRAPHY OF 1958
GROUND INVENTORY OF 2003
AERIAL INVENTORY OF 2003

UNIVERSAL TRANSVERSE MERCATOR ZONE 14
NORTH AMERICAN DATUM 83