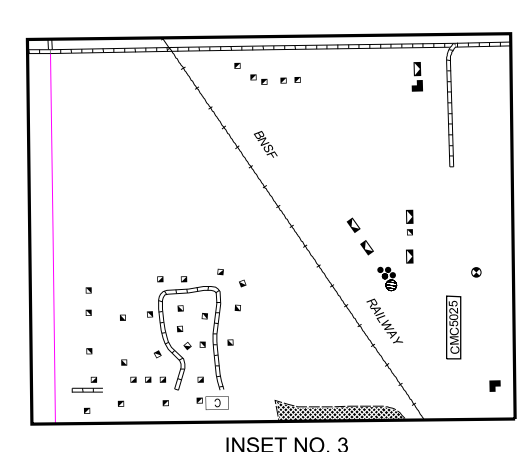
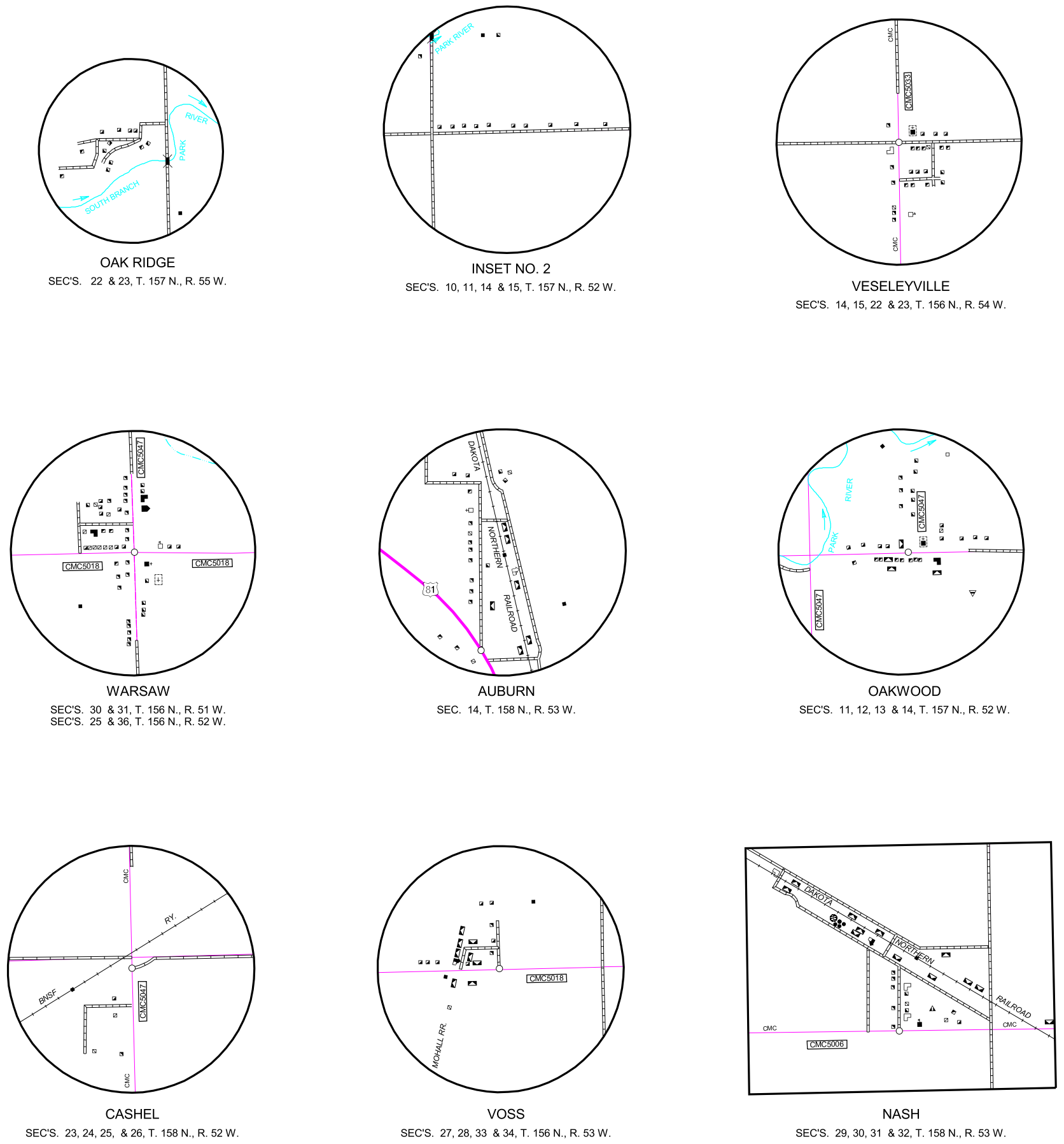
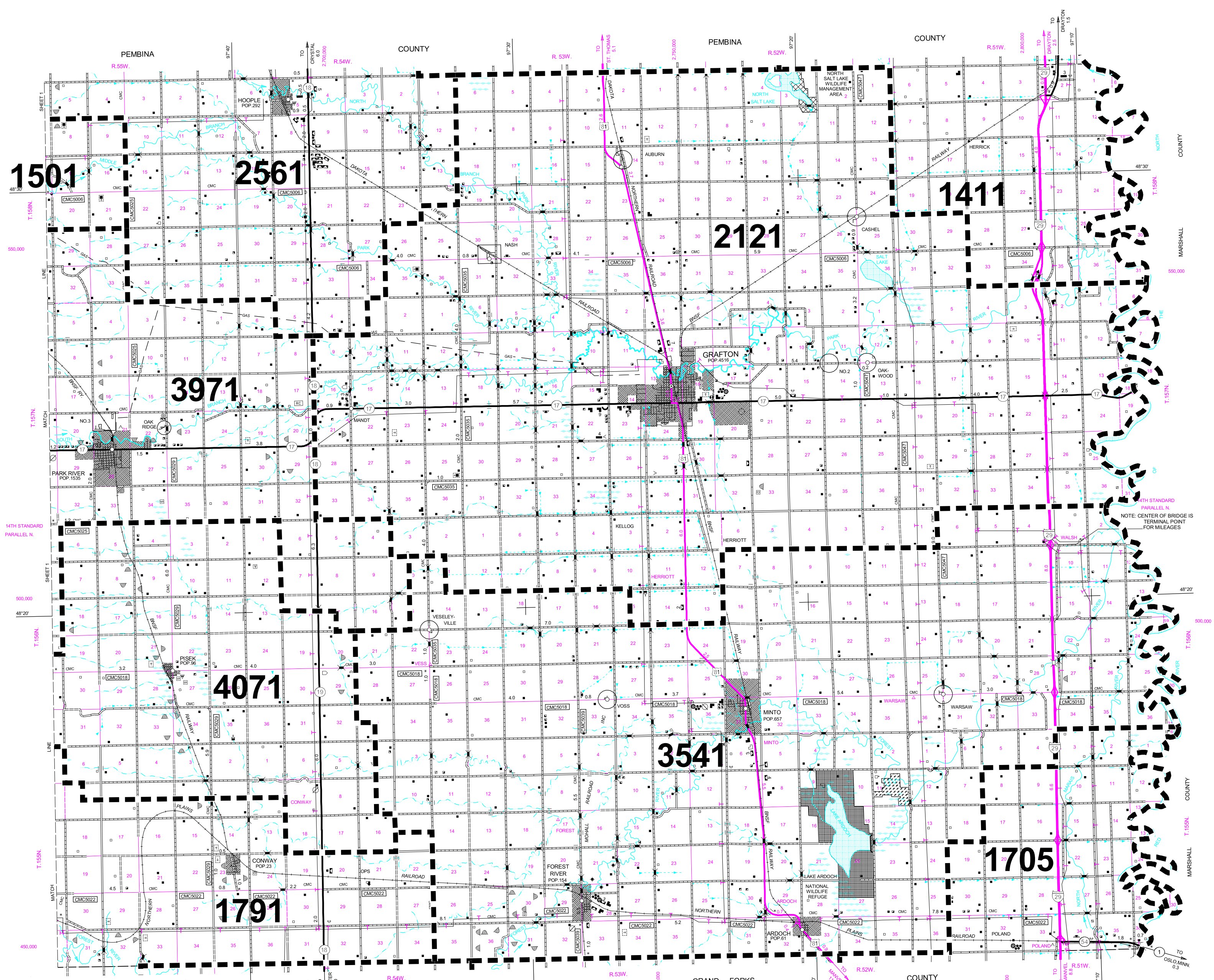


1998 COUNTY FIRE DISTRICT MAP



- | | |
|------------------------------------|-------------------------------|
| 1411 - DRAYTON RURAL FIRE DEPT | CITY FIRE DEPARTMENTS |
| 1501 - EDINBURG F/P DISTRICT | 1800 - FOREST RIVER FIRE DEPT |
| 1705 - FERRY TOWNSHIP F/P DISTRICT | 2120 - GRAFTON FIRE DEPT |
| 1791 - FORDVILLE F/P DISTRICT | 2560 - HOOPLE FIRE DEPT |
| 2121 - GRAFTON F/P DISTRICT | 3970 - PARK RIVER FIRE DEPT |
| 2561 - HOOPLE F/P DISTRICT | |
| 3541 - MINTO F/P DISTRICT | |
| 3971 - PARK RIVER F/P DISTRICT | |
| 4071 - PISEK F/P DISTRICT | |

NAME AND LOCATION OF ORGANIZED CIVIL TOWNSHIPS THOSE UNORGANIZED ARE SO NOTED

- T. 158 N.-R. 59 W. KINLOSS
- T. 158 N.-R. 58 W. SILVESTA
- T. 158 N.-R. 57 W. TIBER
- T. 158 N.-R. 56 W. LANPTON
- T. 158 N.-R. 55 W. DUNDEE
- T. 158 N.-R. 54 W. GLENWOOD
- T. 158 N.-R. 53 W. FARMINGTON
- T. 158 N.-R. 52 W. MARTIN
- T. 158 N.-R. 51 W. ST. ANDREWS
- T. 158 N.-R. 50 W. ST. ANDREWS
- T. 157 N.-R. 59 W. DEWEY
- T. 157 N.-R. 58 W. ADAMS
- T. 157 N.-R. 57 W. VESTA
- T. 157 N.-R. 56 W. GOLDEN
- T. 157 N.-R. 55 W. KENSINGTON
- T. 157 N.-R. 54 W. FERTILE
- T. 157 N.-R. 53 W. GRAFTON
- T. 157 N.-R. 52 W. OAKWOOD
- T. 157 N.-R. 51 W. ACTION
- T. 157 N.-R. 50 W. ACTION
- T. 156 N.-R. 59 W. SHEPHERD
- T. 156 N.-R. 58 W. LATONA
- T. 156 N.-R. 57 W. NORTON
- T. 156 N.-R. 56 W. VERNON
- T. 156 N.-R. 55 W. RUSHFORD
- T. 156 N.-R. 54 W. PRAIRIE CENTER
- T. 156 N.-R. 53 W. FARMINGTON
- T. 156 N.-R. 52 W. HARRISTON
- T. 156 N.-R. 51 W. PULASKI
- T. 155 N.-R. 59 W. PULASKI
- T. 155 N.-R. 58 W. SAUTER
- T. 155 N.-R. 57 W. PERTH
- T. 155 N.-R. 56 W. CLEVELAND
- T. 155 N.-R. 55 W. MEDFORD
- T. 155 N.-R. 54 W. EDEN
- T. 155 N.-R. 53 W. FOREST RIVER
- T. 155 N.-R. 52 W. ARDOCH
- T. 155 N.-R. 51 W. WALSHVILLE
- T. 155 N.-R. 50 W. WALSHVILLE

STATE OF NORTH DAKOTA
DIAGRAM OF COUNTIES

SCALE FOR ENLARGEMENTS
1 0 1 2 3 4 5 Miles
0 0.25 0.5 Miles
1 0 1 2 3 4 5 Kilometers
2000

WALSH COUNTY
NORTH AMERICAN DATUM 83
(50,000 FOOT INTERVAL)