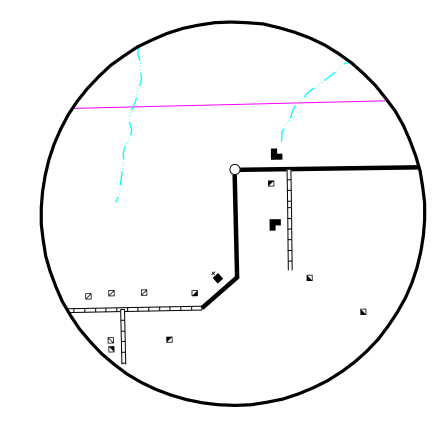
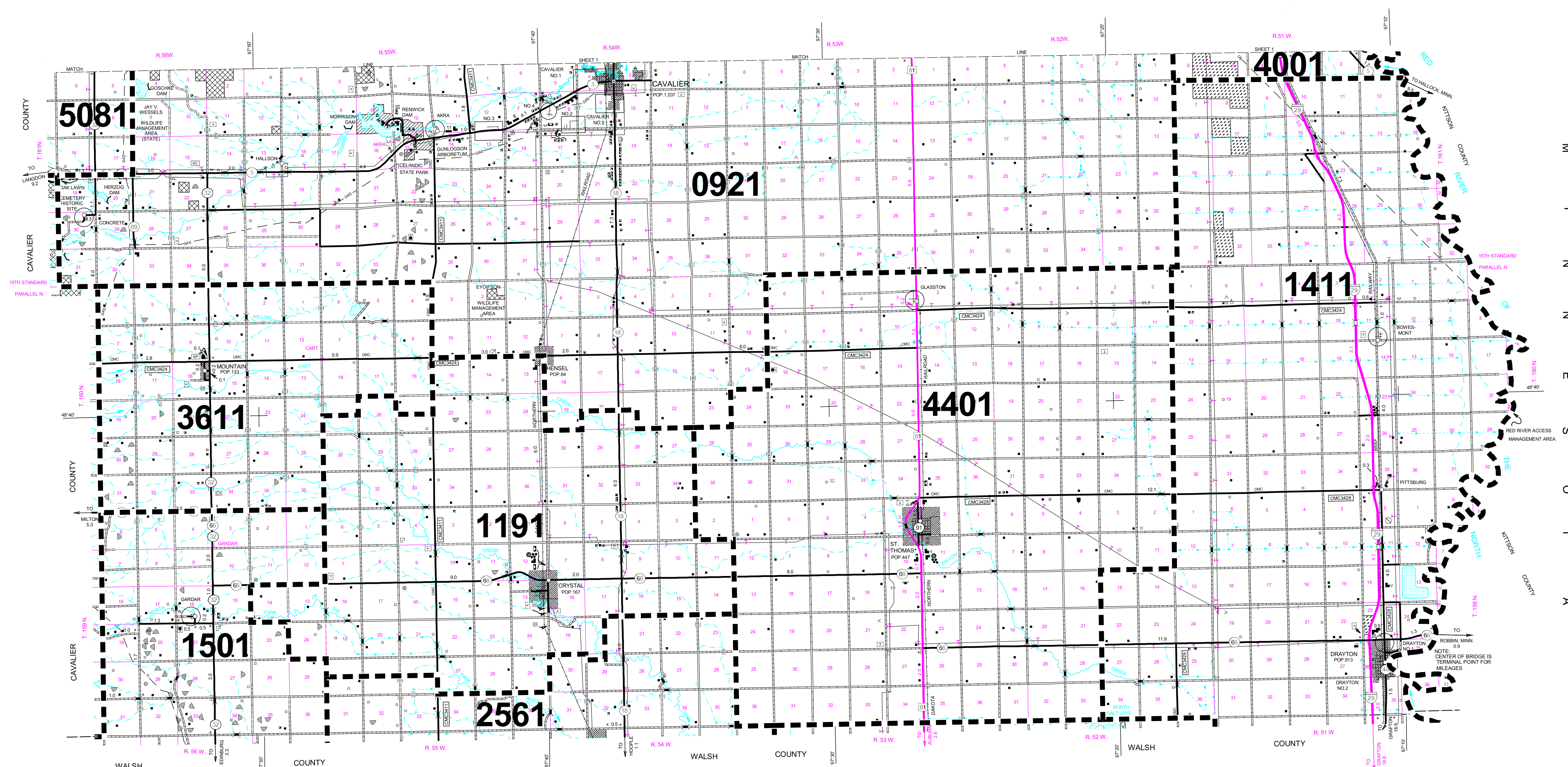
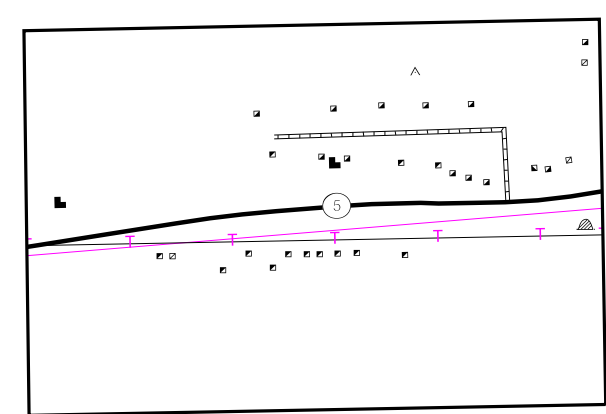


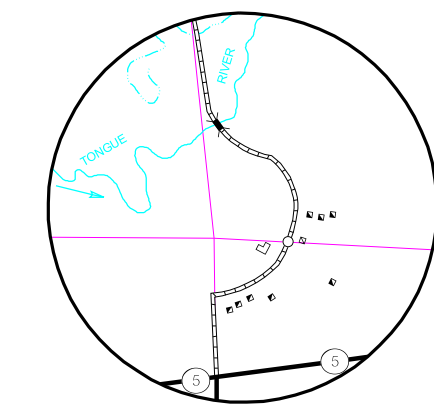
2008 COUNTY FIRE DISTRICT MAP



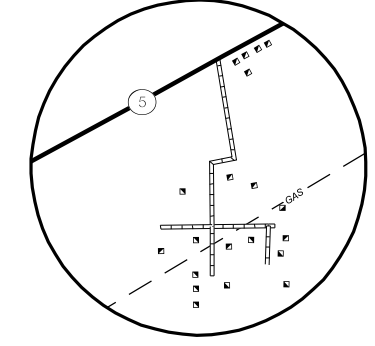
CONCRETE
SECS. 19 & 30, T. 161 N., R. 56 W.



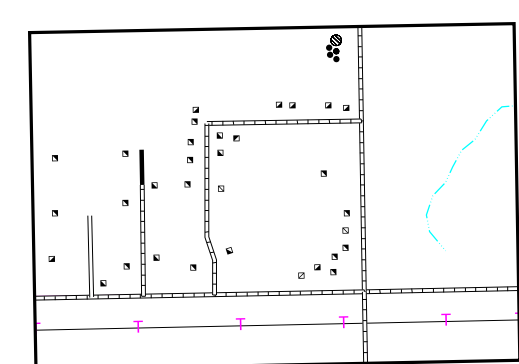
INSET NO. 3
SEC. 12, T. 161 N., R. 55 W.



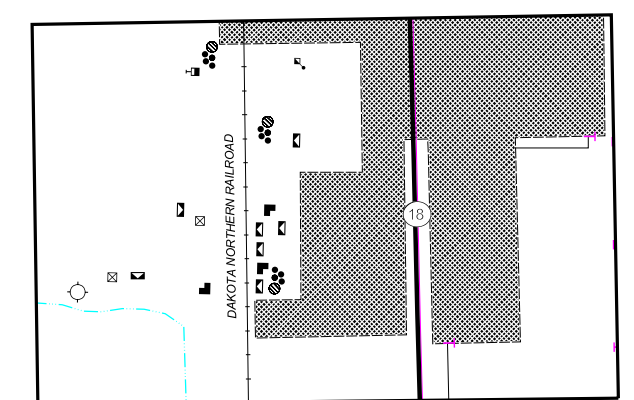
AKRA
SECS. 10, 11, 14, & 15, T. 161 N., R. 54 W.



INSET NO. 4
SEC. 8, T. 161 N., R. 54 W.

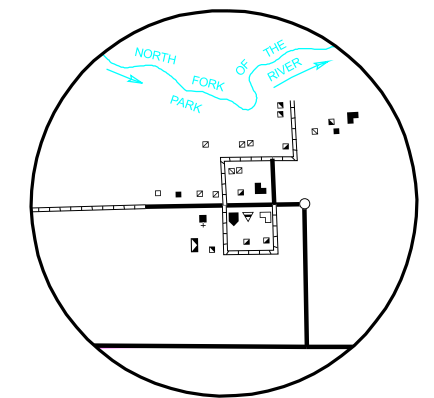


INSET NO. 2
SECS. 9, 16, & 17, T. 161 N., R. 54 W.

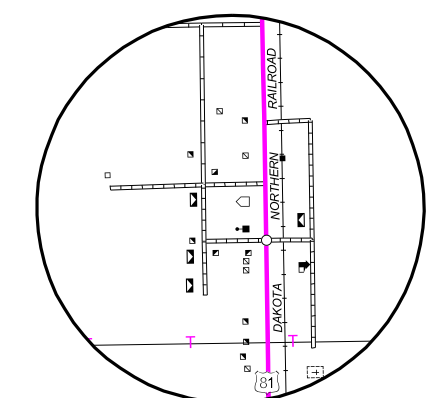


CAVALIER NO. 2
SECS. 9 & 10, T. 161 N., R. 54 W.

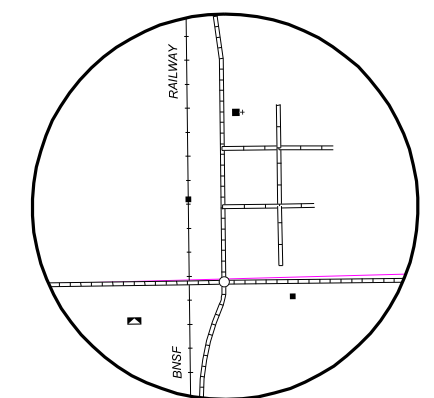
- 0921 - CAVALIER RURAL FIRE DEPT
- 1191 - CRYSTAL F/P DISTRICT
- 1411 - DRAYTON RURAL FIRE DEPT
- 1501 - EDINBURG F/P DISTRICT
- 2561 - HOOPLE F/P DISTRICT
- 3611 - MOUNTAIN F/P DISTRICT
- 4001 - PEMBINA F/P DISTRICT
- 4401 - ST. THOMAS F/P DISTRICT
- 5081 - WALHALLA F/P DISTRICT



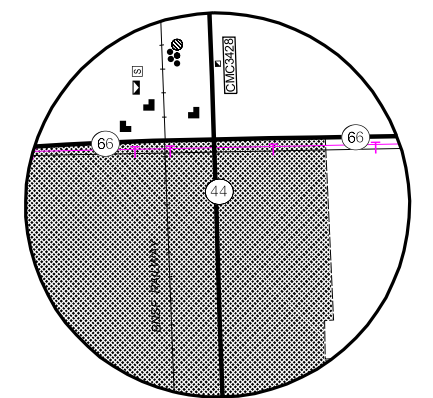
GARDAR
SECS. 16 & 21, T. 159 N., R. 56 W.



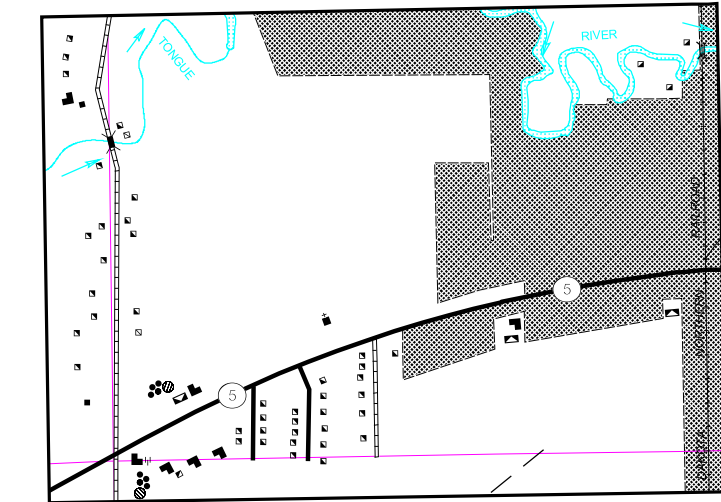
GLASSTON
SECS. 2 & 3, T. 160 N., R. 53 W.



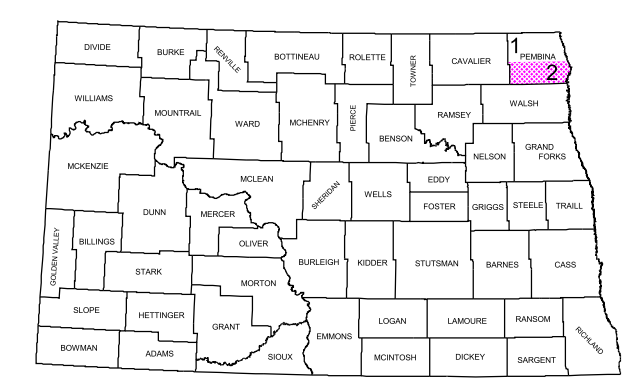
BOWESMONT
SECS. 11 & 14, T. 160 N., R. 51 W.



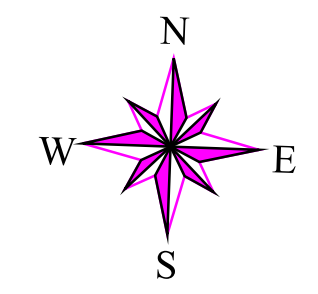
DRAYTON NO. 1
SECS. 23 & 26, T. 159 N., R. 51 W.



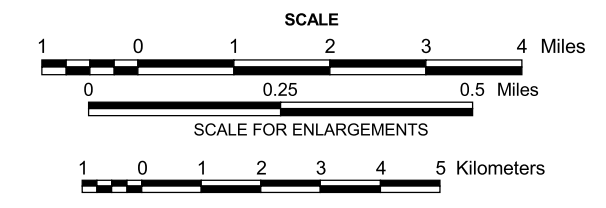
CAVALIER NO. 1
SECS. 4, 5, 8, & 9, T. 161 N., R. 54 W.



STATE OF NORTH DAKOTA
DIAGRAM OF COUNTIES



PEMBINA COUNTY



- CITY FIRE DEPARTMENTS
- 0920 - CAVALIER FIRE DEPT
- 1410 - DRAYTON FIRE DEPT

COPIES OF THIS MAP ARE AVAILABLE FOR PUBLIC USE AT A NOMINAL COST FROM:
MAP SALES, N.D. DEPT. OF TRANSPORTATION, 608 E. BLVD. AVE., BISMARCK, N.D. 58505-0700

BASED ON AERIAL PHOTOGRAPHY OF 1954
GROUND INVENTORY OF 2006
AERIAL INVENTORY OF 2006

UNIVERSAL TRANSVERSE MERCATOR ZONE 14
NORTH AMERICAN DATUM 83