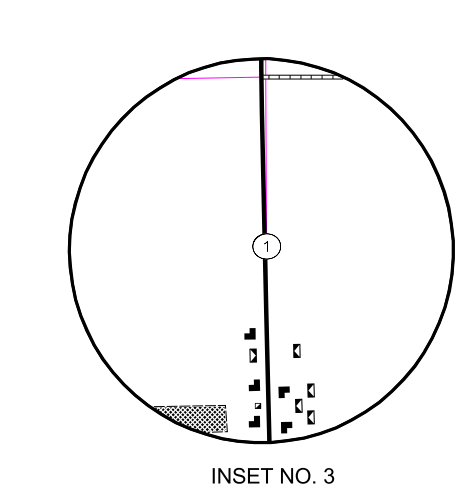
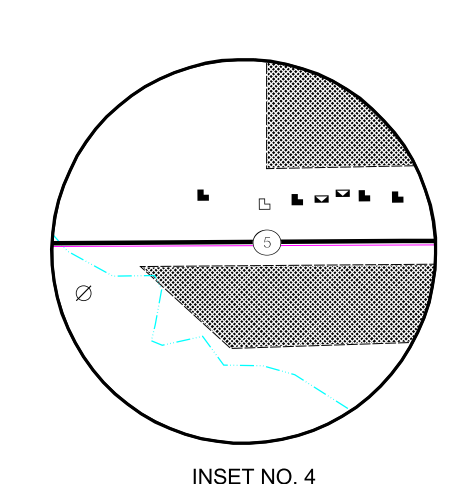
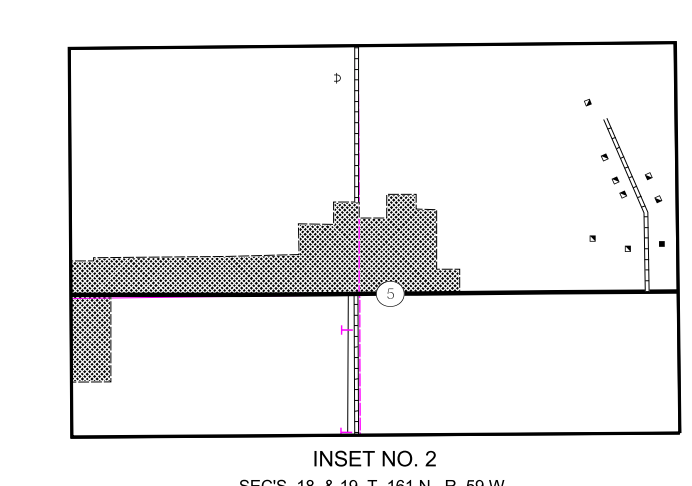
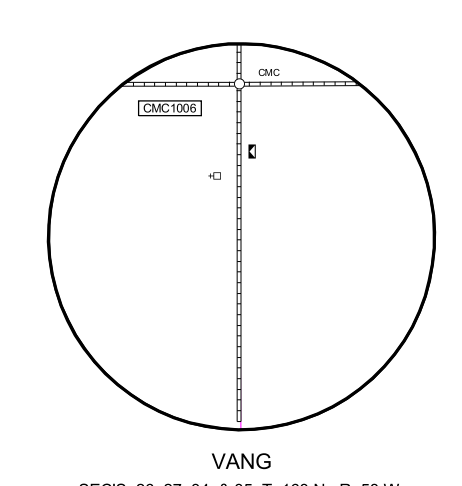
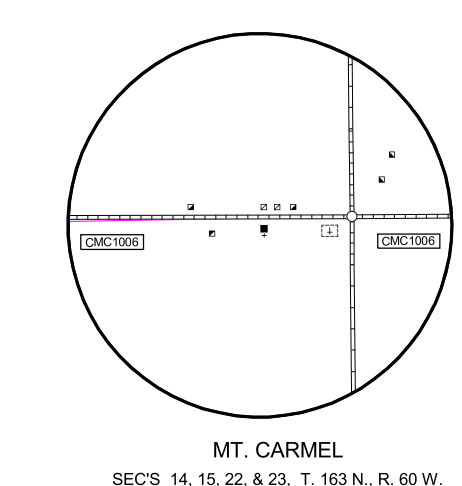
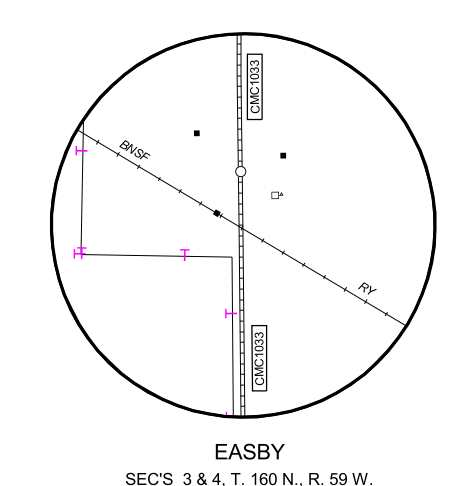
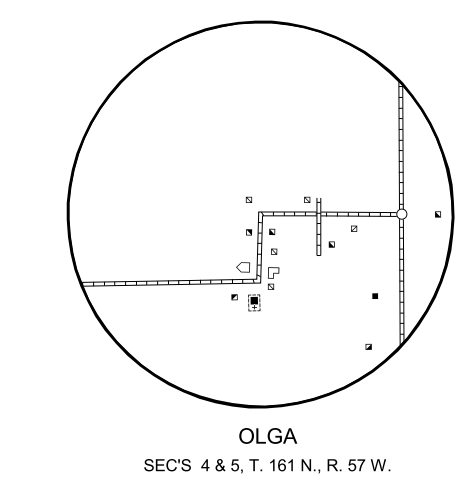
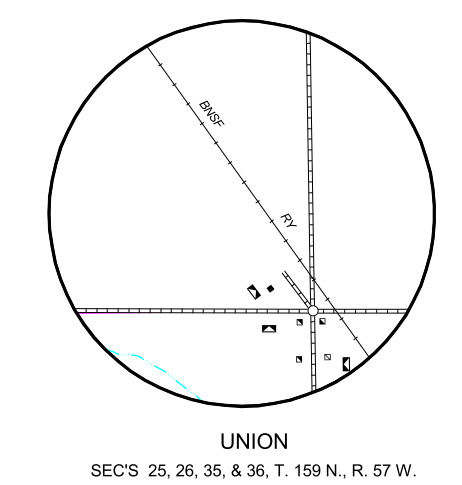
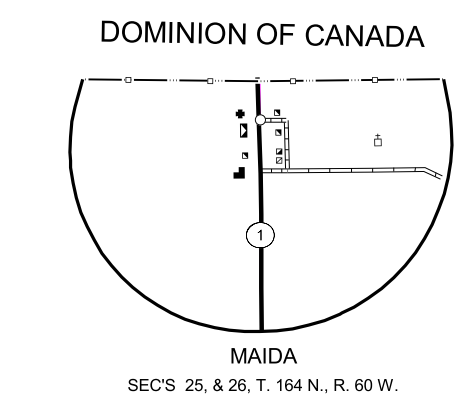
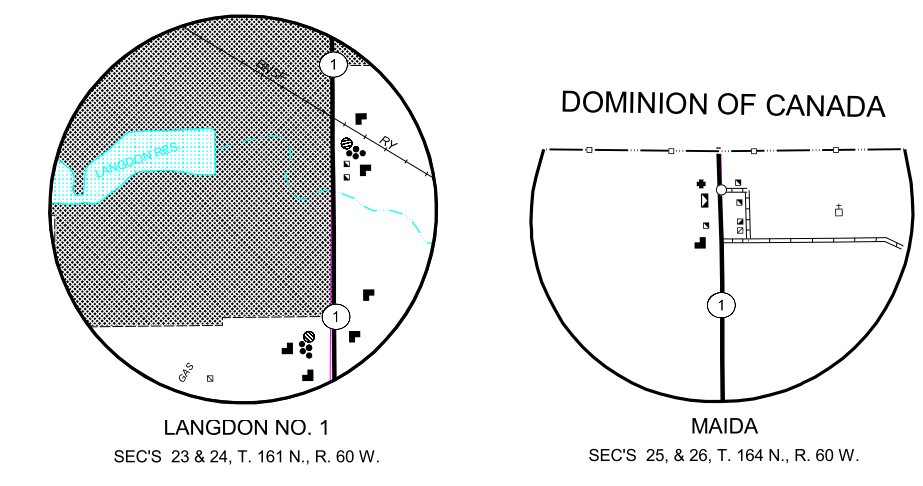
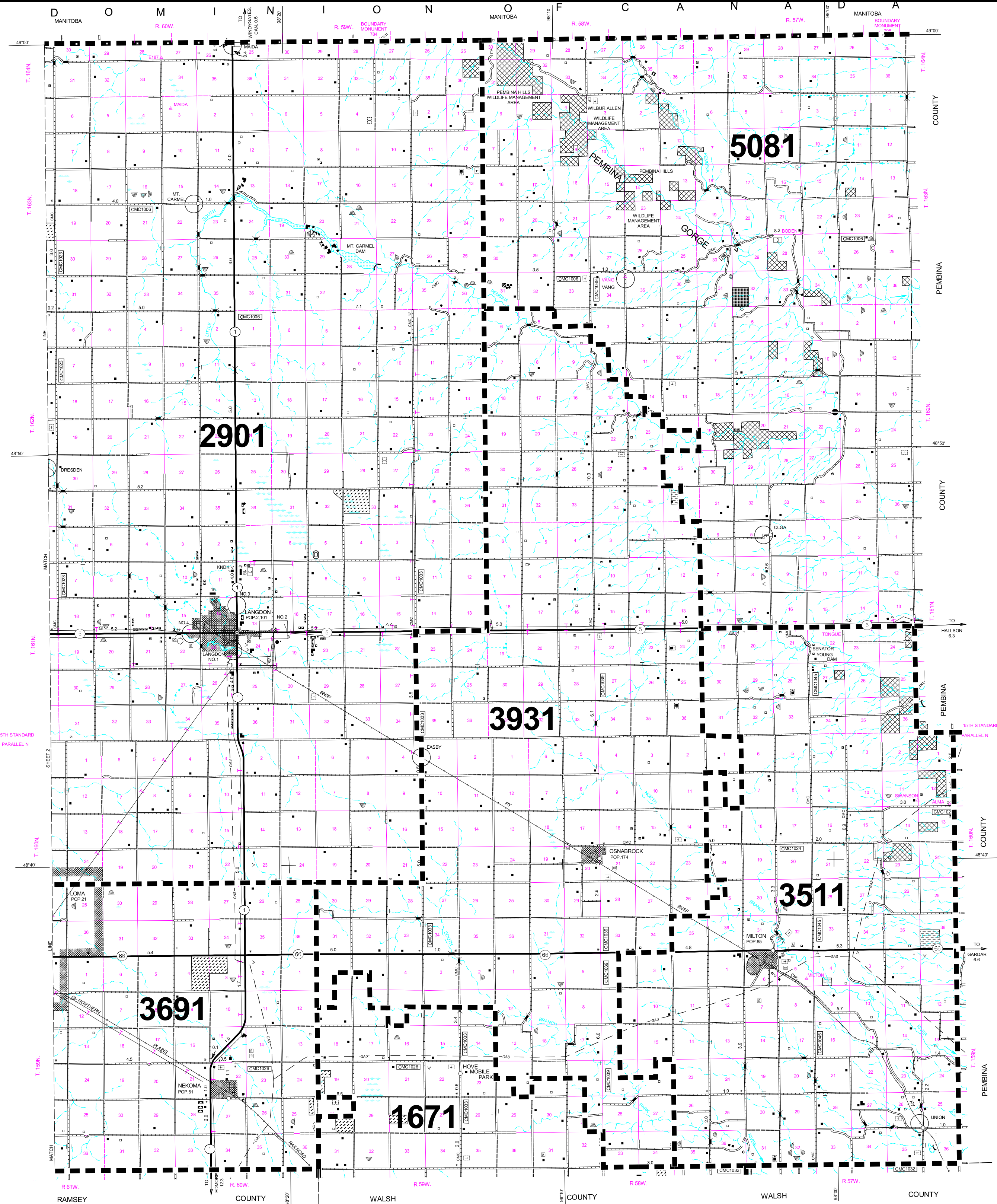


# 1993 COUNTY FIRE DISTRICT MAP

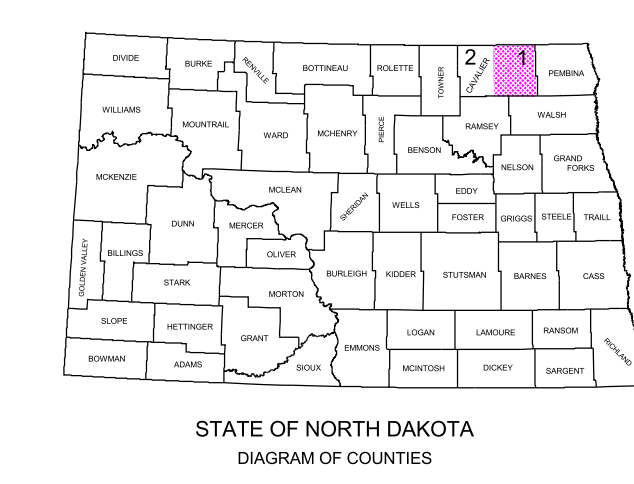
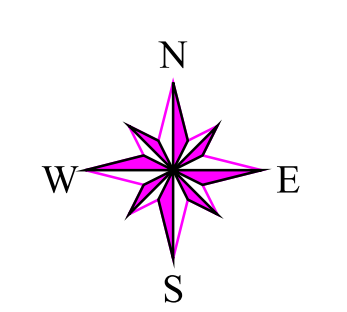


DRESDEN INSET ENLARGEMENT IS SHOWN ON SHEET 2.

### GENERAL LEGEND

<b>ROADS AND ROADWAY FEATURES</b> SELDOM USED TRAILS PRIMITIVE ROAD UNIMPROVED ROAD GRADED AND DRAINED ROAD GRAVEL GRADED AND DRAINED ROAD BITUMINOUS ROAD - LOW TYPE PAVED ROAD - INCLUDING HIGH TYPE BITUMINOUS STREETS IN UNINCORPORATED TOWNS COUNTY MAJOR COLLECTOR ROUTE NUMBER POINTS BETWEEN WHICH DISTANCES ARE MEASURED INTERSTATE NUMBERED HIGHWAY U.S. NUMBERED HIGHWAY STATE HIGHWAY SYSTEM <b>RAILROADS</b> RAILROAD (ANY NUMBER OF TRACKS USED BY A SINGLE OPERATING CO.) RAILROAD STATION RAILROAD GRADE CROSSING <b>STRUCTURES</b> HIGHWAY BRIDGE, GENERAL HIGHWAY GRADE SEPARATION DAM WITH ROAD MINOR DRAINAGE STRUCTURE CONCRETE FORD OR DIP <b>DRAINAGE</b> INTERMITTENT STREAM (NARROW) NARROW STREAM WIDE STREAM WIDE STREAM WITH DAM LAKE, RESERVOIR, OR POND LAKE, RESERVOIR, OR POND WITH DAM MARSH OR SWAMP LAND DRAINAGE DITCH <b>NAVIGATION</b> DOCK, PIER, OR LANDING	<b>FARM UNITS, DWELLINGS, ETC.</b> FARM UNIT (FARM UNITS SHOWN IN MUNICIPAL LIMITS INDICATE FARM BUILDINGS FOR FARM USE) DWELLING OTHER THAN FARM BARRACKS, OR DORMATORIES FOR STUDENTS, WORKERS, MIGRANTS, ETC. SEASONAL OR SUMMER COLONY CHURCH CEMETERY CHURCH WITH CEMETERY ADJACENT WELL <b>CONSERVATION AND RECREATION</b> SCENIC SITE CAMP SITE, NO PERMANENCE (TENTS OR TRAILER PARKING) SKI AREA GOLF GROUND OR COUNTRY CLUB FAIR GROUND, RACE COURSE, SPEEDWAY <b>INDUSTRIAL</b> STORE OR SMALL BUSINESS ESTABLISHMENT FACTORY OR INDUSTRIAL PLANT GAS TANK GROUP OF STORAGE TANKS (OIL OR GAS) GAUGING OR PUMPING STATION WAREHOUSE - GENERAL GRAIN ELEVATOR GRAVEL PIT <b>EDUCATIONAL AND CORRECTIONAL INSTITUTIONS</b> SCHOOLHOUSE TOWNHALL, GRANGE, OR COMMUNITY HALL AGRICULTURAL EXPERIMENT STATION <b>AIRPORTS</b> AIRFIELD, LIMITED FACILITIES LANDING AREA OR STRIP <b>BOUNDARIES</b> MONUMENTED BOUNDARY MARKER COUNTY LINE TOWNSHIP LINE CORPORATE LINE SECTION LINE MATCH LINE BETWEEN ADJOINING SHEETS OF SAME COUNTY BOUNDARY TO MARK ENLARGEMENT INSET MONUMENT - SMALL HISTORIC SITE WILDLIFE MANAGEMENT AREA WATERFOWL PRODUCTION AREA STATE SCHOOL LAND <b>PUBLIC SERVICE FACILITIES</b> POST OFFICE HIGHWAY GARAGE GARBAGE OR RUBBISH DUMP SEWAGE DISPOSAL PLANT WATER SUPPLY STAND PIPE OR TANK PIPE LINE, GAS PIPE LINE, OIL TRANSMISSION LINE POWER SUBSTATION U.S. BORDER CUSTOMS STATION COMMUNICATION TOWER BROADCASTING STATION (RADIO OR TV) <b>CITY AND VILLAGE CENTERS</b> COUNTY SEAT OTHER CITIES AND VILLAGES INCORPORATED CITY OR VILLAGE (GENERALIZED)	<b>MISCELLANEOUS</b> TRIANGULATION STATION DOT TO INDICATE LOCATION OF ANY CULTURAL FEATURE SHOWN OUT OF POSITION ALL VACANT CULTURE INDICATED BY OPEN SYMBOL PLANE COORDINATE LINES LATITUDE AND LONGITUDE
--	---	--

- 1671 - FAIRDALE F/P DISTRICT
  - 2901 - LANGDON F/P DISTRICT
  - 3511 - MILTON F/P DISTRICT
  - 3691 - NEKOMA F/P DISTRICT
  - 3931 - OSNABROCK F/P DISTRICT
  - 5081 - WALHALLA F/P DISTRICT
- CITY FIRE DEPARTMENTS**
- 2900 - LANGDON FIRE DEPT
  - 3930 - OSNABROCK FIRE DEPT



## GENERAL HIGHWAY MAP CAVALIER COUNTY NORTH DAKOTA

PREPARED BY THE  
NORTH DAKOTA DEPARTMENT OF TRANSPORTATION  
PLANNING AND PROGRAMMING DIVISION

IN COOPERATION WITH THE  
U.S. DEPARTMENT OF TRANSPORTATION  
FEDERAL HIGHWAY ADMINISTRATION

SCALE  
0 1 2 3 4 Miles  
0 0.25 0.5 Miles  
SCALE FOR ENLARGEMENTS  
1 0 1 2 3 4 5 Kilometers

2000