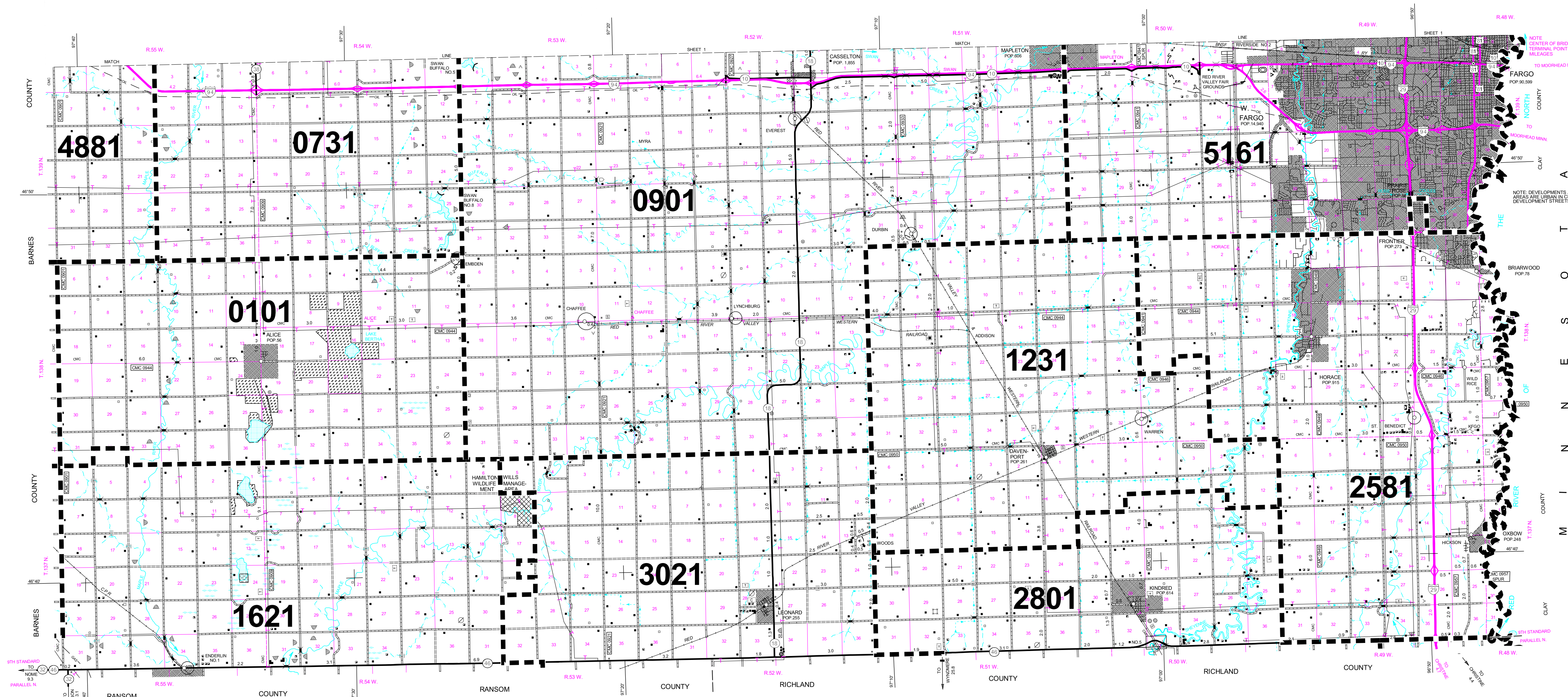


# 1994 COUNTY FIRE DISTRICT MAP



NOTE: CENTER OF BRIDGE IS TERMINAL POINT FOR MILEAGES

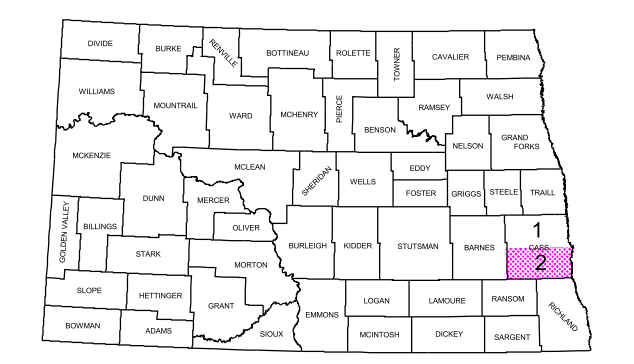
NOTE: DEVELOPMENTS ADJACENT TO INCORPORATED AREAS ARE URBAN IN CHARACTER AND ONLY MAJOR DEVELOPMENT STREETS ARE SYMBOLIZED

NOTE: CENTER OF BRIDGE IS TERMINAL POINT FOR MILEAGES

NOTE: DEVELOPMENTS ADJACENT TO INCORPORATED AREAS ARE URBAN IN CHARACTER AND ONLY MAJOR DEVELOPMENT STREETS ARE SYMBOLIZED

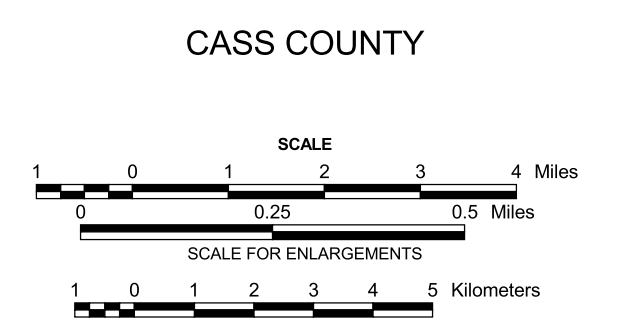
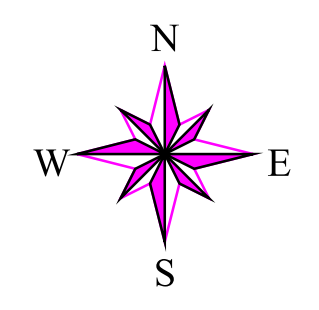
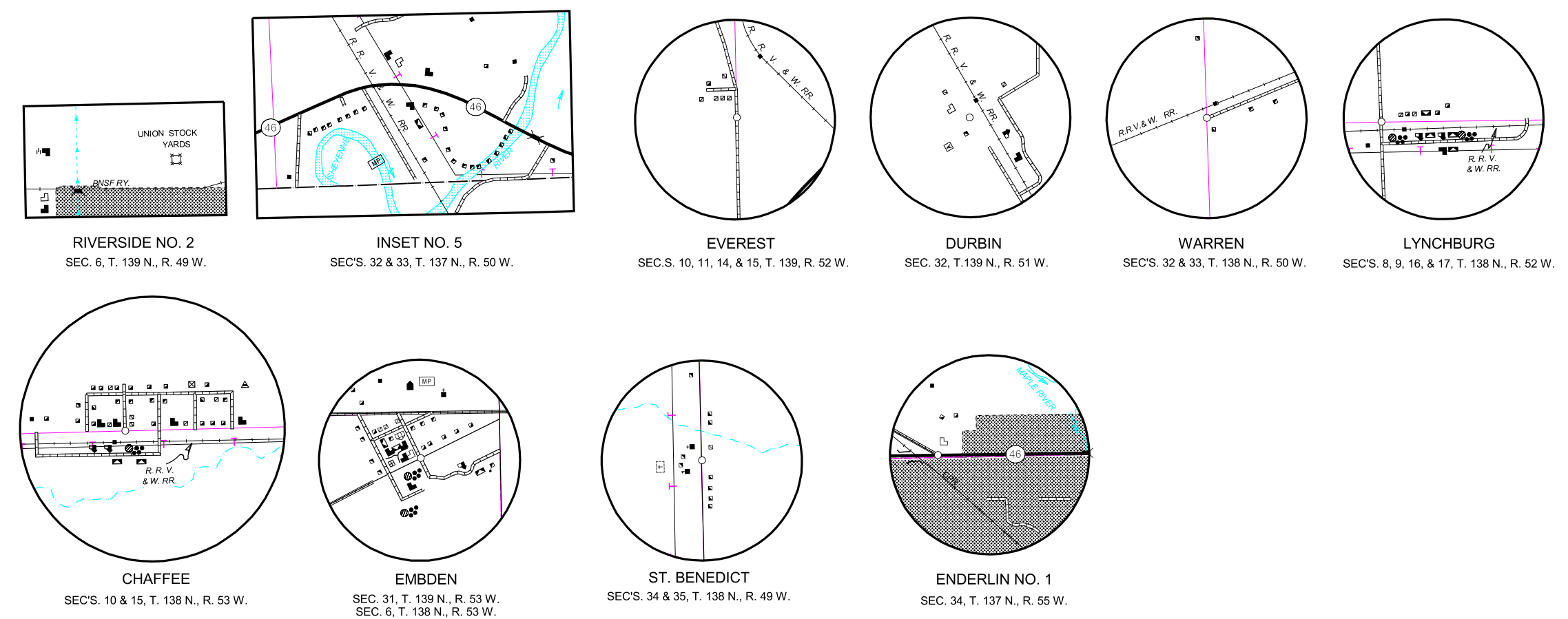
NAME AND LOCATION OF ORGANIZED CIVIL TOWNSHIPS THOSE UNORGANIZED ARE SO NOTED

T. 143 N. R. 55 W. ROCHESTER	T. 140 N. R. 50 W. RAYMOND
T. 143 N. R. 54 W. PAGE	T. 140 N. R. 49 W. REED
T. 143 N. R. 53 W. DOWNS	T. 140 N. R. 48 W. FARGO
T. 143 N. R. 52 W. HUNTER	T. 139 N. R. 55 W. HILL
T. 143 N. R. 51 W. BELL	T. 139 N. R. 54 W. HOWES
T. 143 N. R. 50 W. KAYNON	T. 139 N. R. 53 W. GILL
T. 143 N. R. 49 W. NOBLE	T. 139 N. R. 52 W. EVEREST
T. 142 N. R. 55 W. LAKE	T. 139 N. R. 51 W. DURBIN
T. 142 N. R. 54 W. RICH	T. 139 N. R. 50 W. MAPLETON
T. 142 N. R. 53 W. ERIE	T. 139 N. R. 49 W. BARNES
T. 142 N. R. 52 W. ARTHUR	T. 139 N. R. 48 W. BARNES
T. 142 N. R. 51 W. GUNDEL	T. 139 N. R. 50 W. CLIFTON
T. 142 N. R. 50 W. GARDNER	T. 138 N. R. 54 W. ELDER
T. 142 N. R. 49 W. WISER	T. 138 N. R. 53 W. WALBURG
T. 141 N. R. 55 W. CORNELL	T. 138 N. R. 52 W. MARLE RIVER
T. 141 N. R. 54 W. AVR	T. 138 N. R. 51 W. ADDISON
T. 141 N. R. 53 W. EMPIRE	T. 138 N. R. 50 W. WARREN
T. 141 N. R. 52 W. AMERIA	T. 138 N. R. 49 W. STANLEY
T. 141 N. R. 51 W. RUSH RIVER	T. 138 N. R. 48 W. STANLEY
T. 141 N. R. 50 W. BERLIN	T. 137 N. R. 55 W. PONTIAC
T. 141 N. R. 49 W. HARWOOD	T. 137 N. R. 54 W. HIGHLAND
T. 141 N. R. 48 W. HARWOOD	T. 137 N. R. 53 W. WATSON
T. 140 N. R. 55 W. TOWER	T. 137 N. R. 52 W. LEONARD
T. 140 N. R. 54 W. BUFFALO	T. 137 N. R. 51 W. DAVENPORT
T. 140 N. R. 53 W. WHEATLAND	T. 137 N. R. 50 W. NORMANNA
T. 140 N. R. 52 W. CASSELTON	T. 137 N. R. 49 W. PLEASANT
T. 140 N. R. 51 W. HARMONY	T. 137 N. R. 48 W. PLEASANT



- 0101 - ALICE F/P DISTRICT
- 0731 - BUFFALO F/P DISTRICT
- 0901 - CASSELTON RURAL FIRE DEPT
- 1231 - DAVENPORT F/P DISTRICT
- 1621 - ENDERLIN F/P DISTRICT
- 2581 - HORACE F/P DISTRICT
- 2801 - KINDRED RURAL FIRE DEPT
- 3021 - LEONARD F/P DISTRICT
- 4881 - TOWER CITY F/P DISTRICT
- 5161 - WEST FARGO RURAL FIRE DEPT

- CITY FIRE DEPARTMENTS
- 0900 - CASSELTON FIRE DEPT
  - 1700 - FARGO FIRE DEPT
  - 3320 - MAPLETON FIRE DEPT
  - 5160 - WEST FARGO FIRE DEPT



COPIES OF THIS MAP ARE AVAILABLE FOR PUBLIC USE AT A NOMINAL COST FROM:  
MAP SALES, N.D. DEPT. OF TRANSPORTATION, 608 E. BLVD. AVE., BISMARCK, N.D. 58505-0700

BASED ON AERIAL PHOTOGRAPHY OF 1954  
GROUND INVENTORY OF 2004  
AERIAL INVENTORY OF 2004

UNIVERSAL TRANSVERSE MERCATOR ZONE 14  
NORTH AMERICAN DATUM 83