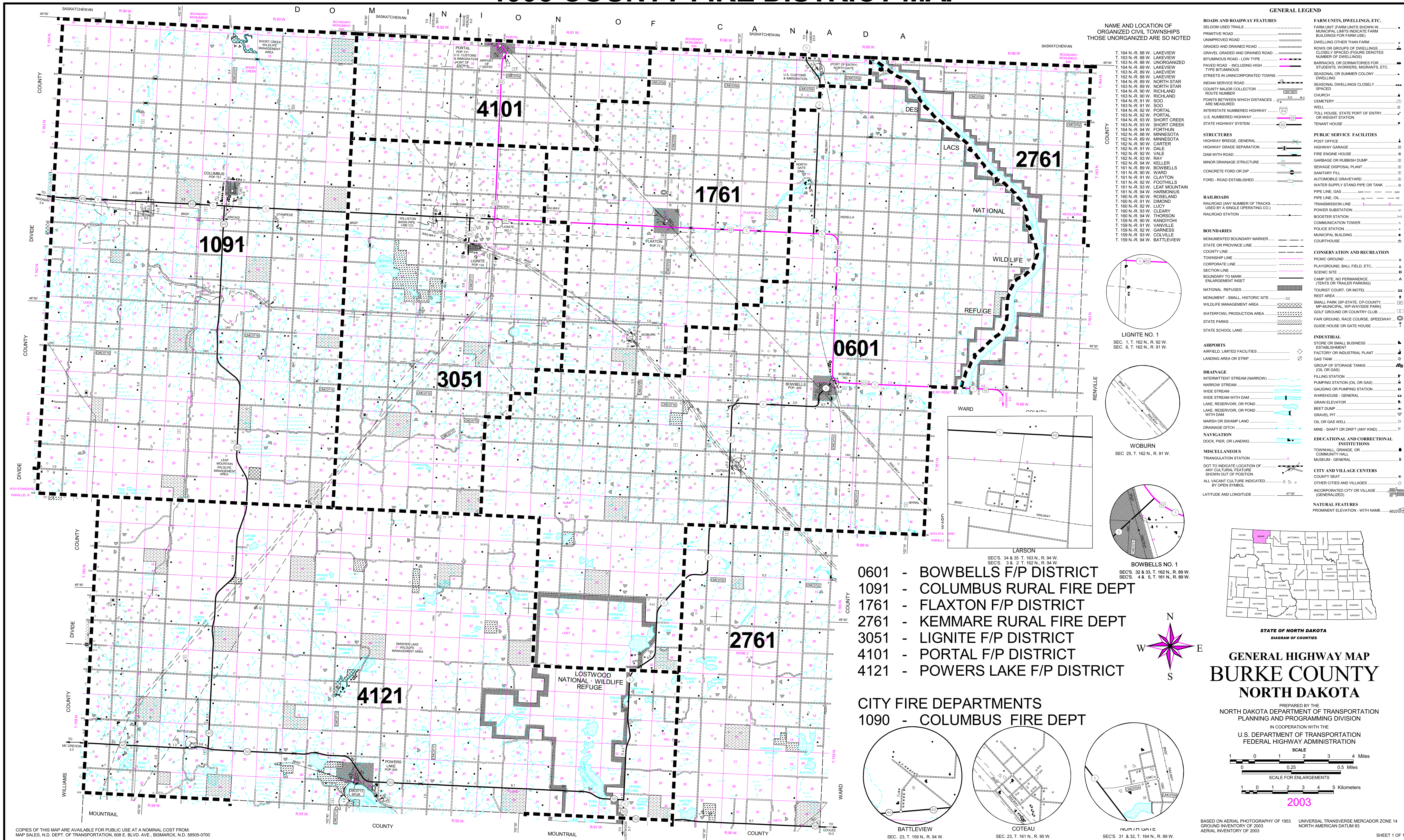


# 1993 COUNTY FIRE DISTRICT MAP

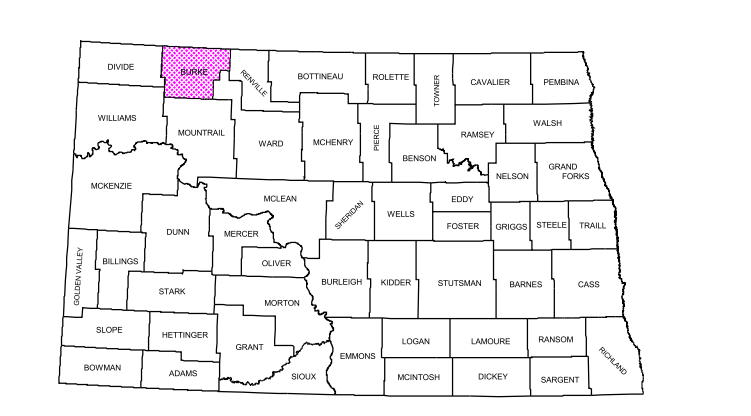


### GENERAL LEGEND

ROADS AND ROADWAY FEATURES	FARM UNITS, DWELLINGS, ETC.
SELWIDE USED TRAILS	FARM UNIT (FARM UNITS SHOWN IN MUNICIPAL LIMITS INDICATE FARM BUILDINGS OR FARM USE)
PRIMITIVE ROAD	DWELLING OTHER THAN FARM
UNIMPROVED ROAD	ROWS OR GROUPS OF DWELLINGS CLOSELY SPACED (FIGURE DENOTES NUMBER OF DWELLINGS)
GRAVEL AND DRAINED ROAD	BARRACKS, OR DORMATORIES FOR STUDENTS, WORKERS, MIGRANTS, ETC.
BITUMINOUS ROAD - LOW TYPE	SEASONAL OR SUMMER COUNTY DWELLING
PAVED ROAD - INCLUDING HIGH TYPE BITUMINOUS	SEASONAL DWELLINGS CLOSELY SPACED
STREETS IN UNINCORPORATED TOWNS	CHURCH
INDIAN SERVICE ROAD	CEMETERY
COUNTY MAJOR COLLECTOR ROUTE NUMBER	WELL
POINTS BETWEEN WHICH DISTANCES ARE MEASURED	TOLL HOUSE, STATE PORT OF ENTRY, OR WEIGHT STATION
INTERSTATE NUMBERED HIGHWAY	U.S. NUMBERED HIGHWAY
STATE HIGHWAY SYSTEM	
	STRUCTURES
	HIGHWAY BRIDGE, GENERAL
	HIGHWAY GRADE SEPARATION
	FIRE ENGINE HOUSE
	DAM WITH ROAD
	MINOR DRAINAGE STRUCTURE
	CONCRETE FORD OR DIP
	FORD - ROAD ESTABLISHED
	RAILROADS
	RAILROAD (ANY NUMBER OF TRACKS USED BY A SINGLE OPERATING CO.)
	RAILROAD STATION
	BOUNDARIES
	MONUMENTED BOUNDARY MARKER
	STATE OR PROVINCE LINE
	TOWNSHIP LINE
	CORPORATE LINE
	SECTION LINE
	BOUNDARY TO MARK ENLARGEMENT INSET
	NATIONAL REFUGES
	MONUMENT - SMALL HISTORIC SITE
	WILDLIFE MANAGEMENT AREA
	WATERFOWL PRODUCTION AREA
	STATE PARKS
	STATE SCHOOL LAND
	AIRPORTS
	AIRFIELD, LIMITED FACILITIES
	LANDING AREA OR STRIP
	DRAINAGE
	INTERMITTENT STREAM (NARROW)
	NARROW STREAM
	WIDE STREAM
	LAKE, RESERVOIR, OR POND WITH DAM
	LAKE, RESERVOIR, OR POND
	WATERFOWL PRODUCTION AREA
	WATERFOWL PRODUCTION AREA WITH DAM
	MARSH OR SWAMP LAND
	DRAINAGE DITCH
	NAVIGATION
	DOCK, PIER, OR LANDING
	MISCELLANEOUS
	TRANSMISSION STATION
	DOT TO INDICATE LOCATION OF ANY CULTURAL FEATURE SHOWN OUT OF POSITION
	ALL VACANT CULTURE INDICATED BY OPEN SYMBOL
	LATITUDE AND LONGITUDE
	POST OFFICE
	HIGHWAY GARAGE
	FIRE ENGINE HOUSE
	GARAGE OR RUBBISH DUMP
	SEWAGE DISPOSAL PLANT
	SANITARY FILL
	AUTOMOBILE GRAVEYARD
	WATER SUPPLY STAND PIPE OR TANK
	PIPE LINE, GAS
	PIPE LINE, OIL
	TRANSMISSION LINE
	POWER SUBSTATION
	BOOSTER STATION
	COMMUNICATION TOWER
	POLICE STATION
	MUNICIPAL BUILDING
	COURTHOUSE
	CONSERVATION AND RECREATION
	PICNIC GROUND
	PLAYGROUND, BALL FIELD, ETC.
	SCENIC SITE
	CAMP SITE, NO PERMANENCE (TENTS OR TRAILER PARKING)
	TOURIST COURT, OR MOTEL
	REST AREA
	SMALL PARK (SP-STATE, CP-COUNTY, MP-MUNICIPAL, WP-WAYSIDE PARK)
	GOLF GROUND OR COUNTRY CLUB
	FAIR GROUND, RACE COURSE, SPEEDWAY
	GUIDE HOUSE OR GATE HOUSE
	INDUSTRIAL
	STORE OR SMALL BUSINESS ESTABLISHMENT
	FACTORY OR INDUSTRIAL PLANT
	GAS TANK
	GROUP OF STORAGE TANKS (OIL OR GAS)
	FILLING STATION
	PUMPING STATION (OIL OR GAS)
	Gauging or Pumping Station
	WAREHOUSE - GENERAL
	GRAIN ELEVATOR
	BEEHIVE
	GRAVEL PIT
	OIL OR GAS WELL
	MINE - SHAFT OR DRIFT (ANY KIND)
	EDUCATIONAL AND CORRECTIONAL INSTITUTIONS
	TOWNHALL, GRANGE, OR COMMUNITY HALL
	MUSEUM - GENERAL
	CITY AND VILLAGE CENTERS
	COUNTY SEAT
	OTHER CITIES AND VILLAGES
	INCORPORATED CITY OR VILLAGE (GENERALIZED)
	NATURAL FEATURES
	PROMINENT ELEVATION - WITH NAME

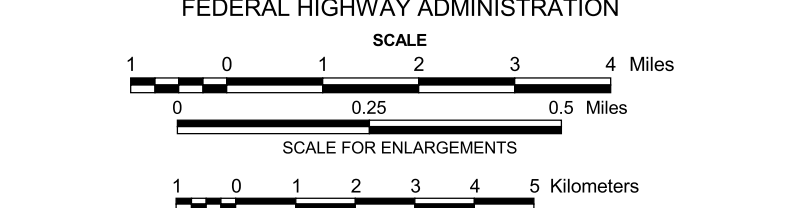
- 0601 - BOWBELLS F/P DISTRICT
- 1091 - COLUMBUS RURAL FIRE DEPT
- 1761 - FLAXTON F/P DISTRICT
- 2761 - KEMMARE RURAL FIRE DEPT
- 3051 - LIGNITE F/P DISTRICT
- 4101 - PORTAL F/P DISTRICT
- 4121 - POWERS LAKE F/P DISTRICT

- CITY FIRE DEPARTMENTS**
- 1090 - COLUMBUS FIRE DEPT



## GENERAL HIGHWAY MAP BURKE COUNTY NORTH DAKOTA

PREPARED BY THE  
NORTH DAKOTA DEPARTMENT OF TRANSPORTATION  
PLANNING AND PROGRAMMING DIVISION  
IN COOPERATION WITH THE  
U.S. DEPARTMENT OF TRANSPORTATION  
FEDERAL HIGHWAY ADMINISTRATION



2003

BASED ON AERIAL PHOTOGRAPHY OF 1953  
GROUND INVENTORY OF 2003  
AERIAL INVENTORY OF 2003  
UNIVERSAL TRANSVERSE MERCATOR ZONE 14  
NORTH AMERICAN DATUM 83

COPIES OF THIS MAP ARE AVAILABLE FOR PUBLIC USE AT A NOMINAL COST FROM:  
MAP SALES, N.D. DEPT. OF TRANSPORTATION, 608 E. BLVD. AVE., BISMARCK, N.D. 58505-0700