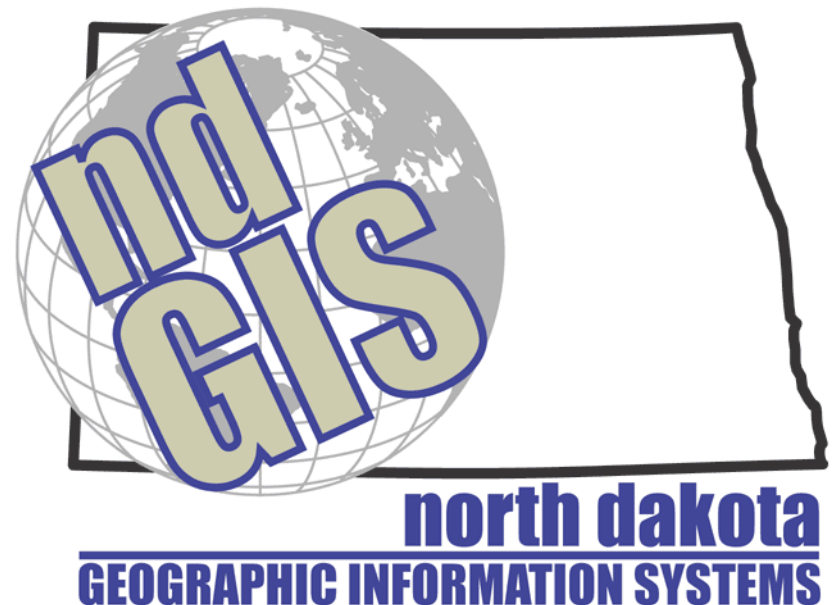




North Dakota Full GIS Technical Committee Meeting

November 2, 2009

*Bob Nutsch
GIS Coordinator
State of North Dakota*





Introductions:

Name, title, who you work for

*P.S. Please be sure to fill in the
sign-in sheet*

Agenda

✚ Executive Committee Report

- ☒ Accomplishments
- ☒ Current work and goals

✚ Discussion

- ☒ Feedback to Executive GISTC
- ☒ Data priorities & needs
- ☒ Training needs

✚ Other Stuff

- ☒ Social media
- ☒ Google Base Map Partner Program

Background

- ⊕ Last meeting October 15, 2008

 - ⊞ Minutes:

 - <http://www.nd.gov/gis/about/gistechfull/minutes/10152008minutes.html>

- ⊕ Executive Order 2001-06

- ⊕ Executive GISTC – 10 agencies

- ⊕ Full GISTC – state agencies, local federal agencies, business community

Executive GISTC Membership

- ⊕ State Water Commission – Rod Bassler
- ⊕ Dept. of Health – Ann Fritz
- ⊕ Dept. of Transportation – Brian Bieber
- ⊕ Game and Fish – Brian Hosek
- ⊕ Geological Survey – Elroy Kadrmas
- ⊕ Parks and Recreation – Chris Dirk
- ⊕ Information Tech. Dept. – Bob Nutsch
- ⊕ Land Department* - Levi Erdmann
- ⊕ Public Service Commission* – Steve Kahl
- ⊕ Oil & Gas Division* – Nathan Kirby

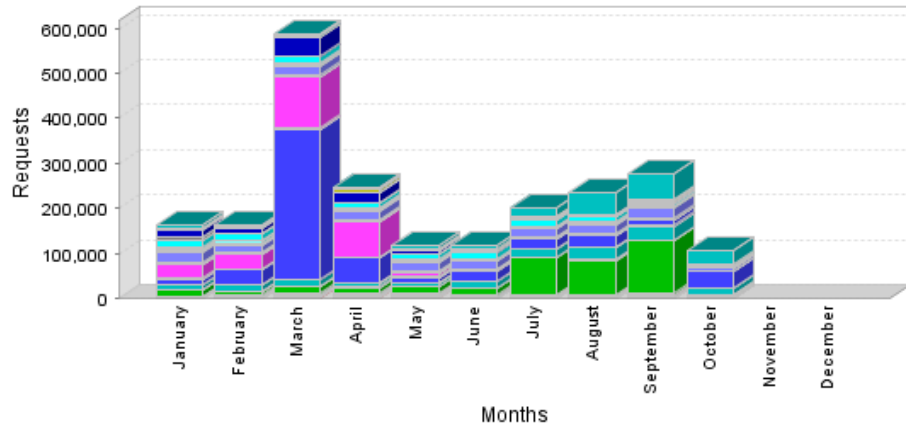
*Associate Members

Accomplishments – GIS Hub Usage

- Database: A little over 3.5TB
- Data downloads: Over 58,000 during 2008, 26% more than 2007
- Database: 45+ daily concurrent connections from state agency users
- Web applications: Over 2.2 million hits during 2008, 57% more than 2008

Web Services (2009)

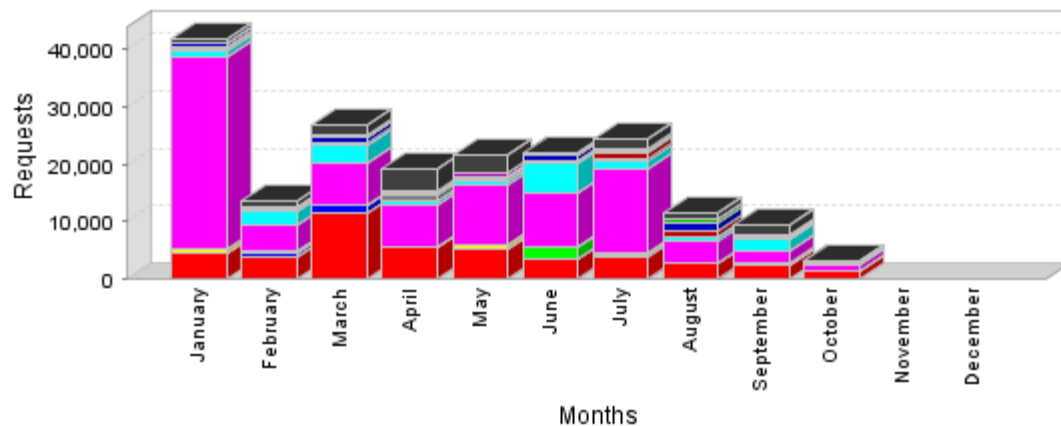
Requests per Month - Image Server



ArcIMS Image Services

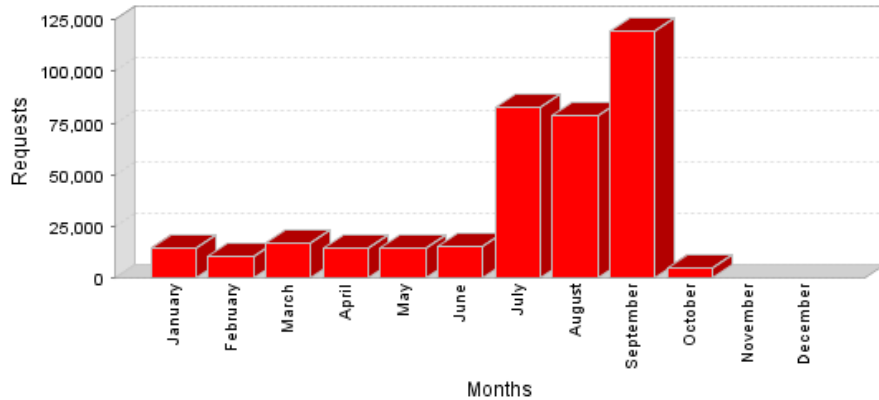
ArcIMS Feature Services

Requests per Month - Feature Server



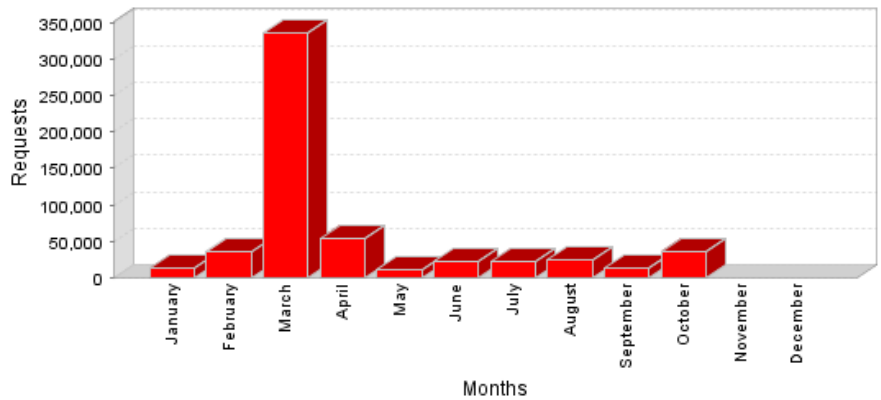
Specific Web Services (2009)

Requests per Month - Image Server



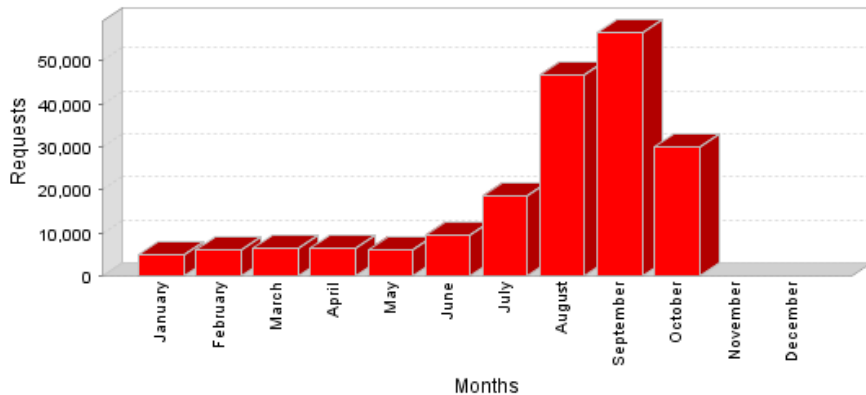
OGC-WMS: GeneralInfo

Requests per Month - Image Server



OGC-WMS: AerialImages

Requests per Month - Image Server



Game & Fish: PLOTS Guide

Web Services

- ⊕ ESRI-format and OGC-format
- ⊕ Image services – raster data, turn layers on/off
- ⊕ ESRI- format feature services – vector data, turn layers on/off, set the symbology
- ⊕ See <http://www.nd.gov/gis/mapsdata/web/> for more information

Accomplishments – General

- ✚ Flood fighting support via web services
 - ▣ Record usage
- ✚ Updated Hub Explorer
 - ▣ New functions
 - ▣ Template for other agency applications
- ✚ Upgraded data extraction software
 - ▣ Includes FGDB and KML
- ✚ Hub Data Portal
 - ▣ Replaces Metadata Explorer

Accomplishments – New & Updated Data

- ⊕ Aquifers – compilation is continuing
- ⊕ Hydrologic unit boundaries – certified
- ⊕ Railroad data – merging of NDDOT & federal sources completed
- ⊕ Other updated data – roads, communications, water, PLSS, fire districts
- ⊕ For listings of updated data visit <http://www.nd.gov/gis/mapsdata/data/datainfo>

Accomplishments – New & Updated Data

- ✦ Completed 10-meter DEM state-wide coverage through Joint Funding Agreement with USGS
- ✦ Aerial photography – high resolution data from Devils Lake and Fargo
- ✦ Provided support to City of Grand Forks and Bismarck-Mandan for 2009 high-resolution data

Accomplishments – New & Updated Data

- ✦ Continuing to provide support to DES for their emergency services dataset, aka “base map”
 - ❑ Data:
 - Imagery
 - Road centerlines
 - Address points
 - ❑ Project champion: Department of Emergency Services (DES)
 - ❑ Supporting resolutions from the GISTC and the ND 9-1-1 Association
 - ❑ Number one priority on the SITAC (State Information Technology Advisory Committee) ranking of large projects

Emergency Services Datasets

- ⊕ Centerlines and address points are derived from imagery
- ⊕ High-resolution imagery (1-foot) made possible through partnership with the NDDOT
- ⊕ DES exploring additional partnerships with federal agencies
- ⊕ Leveraging the NDDOT assets to collect imagery; most processing outsourced
- ⊕ Short-term maintenance with GPS
- ⊕ Long-term maintenance with new imagery

Current Work

- ❖ New core Hub architecture
 - ❖ PostgreSQL and Oracle comparison
 - ❖ New servers – greater redundancy
 - ❖ Additional storage through cost savings
- ❖ Upgrades
 - ❖ 9.3.1 ArcGIS Server & ArcIMS & ArcSDE
 - ❖ Just beginning

Current Work

✚ Broadband Mapping

- ✚ Part of the American Recovery & Reinvestment Act of 2009
- ✚ Federal grants for mapping areas served, under-served, and un-served by broadband providers
- ✚ States collect/verify availability, speed, location, technology type
- ✚ States determine how mapping is done, e.g., contract out
- ✚ ND – waiting on grant amount news, vendor selected

Upcoming Work

- ✚ New imagery coming up soon
 - ▣ NAIP 2009, Bismarck-Mandan, Grand Forks
- ✚ Complete core Hub database upgrade
- ✚ Re-organize/improve/add web services
 - ▣ OGC: WMS, WFS, WCS, KML
 - ▣ Deprecate ArcIMS services
- ✚ Determine/develop new interfaces
- ✚ Updated Strategic Plan

Goals

- ✦ Training – offer instructor-led ESRI training & workshops
 - ▣ \$71,500 has been saved since 2002
- ✦ Support of Dept. of Emergency Services' emergency services datasets project
- ✦ ND GIS Users Conference
 - ▣ Every two years
 - ▣ Variable locations?

GIS Users Conference

- ✦ Started out as GIS Day, transitioned to Users Conference in 2005
- ✦ Registered attendees:
 - ❑ 2001: 40+
 - ❑ 2002: 100
 - ❑ 2003: 120
 - ❑ 2004: 95
 - ❑ 2005: 119
 - ❑ 2006: 146
 - ❑ 2007: 182
 - ❑ 2009: 196+

Feedback & Discussion – Other

- ❁ State-wide data priorities?
 - ❁ Feed for Strategic Plan
 - ❁ Parcels
- ❁ Other state-wide needs?
- ❁ Training needs?
 - ❁ Topics
 - ❁ Training type: ½ day workshop, lecture...
 - ❁ Cost
 - ❁ Location

Feedback & Discussion – Other

- ⊕ Comments?
- ⊕ Questions?
- ⊕ Ways to improve?



Other Stuff

Social Media

- ⊕ Who uses Twitter, Facebook, other?
- ⊕ Recent conferences have discussed
 - ▣ NSGIC
 - ▣ ND Association of Counties
- ⊕ Another form of communication
- ⊕ These tools used by other states, e.g.,
Arkansas: Twitter & Facebook
- ⊕ NDDOT: Facebook

Social Media

Arkansas Example

Arkansas Geographic Information

Arkansas State Land Information Board (ASLIB)

Arkansas Geographic Information Office (AGIO)

Site Last Updated October 7, 2009

Follow us on:

[Twitter](#) | [Facebook](#) | [Blog](#)



Arkansas_AGIO

+ Follow

Major staff meeting today at AGIO. Strategic thinking all around!
<http://bit.ly/186Uec>

about 2 hours ago from Facebook

I posted 9 photos on Facebook in the album "2009 Fall County Assessors Conference" <http://bit.ly/c3Y0Z>
12:01 PM Oct 15th from Facebook

I posted 6 photos on Facebook in the album "FGDC Strategic Business Plan Workshops" <http://bit.ly/23kynF>
11:13 AM Oct 15th from Facebook

NavTeq announces uptake of Arkansas Centerline File data. #nsgic2009 <http://bit.ly/80V5r>
7:11 AM Oct 7th from web

NTIA releases the first broadband mapping grants today. <http://bit.ly/GSigi>
2:41 PM Oct 5th from web

GeoStor More Data and Updates- <http://wp.me/pA5NN-14>
11:04 AM Sep 29th from web

Gov. Beebe Appoints New GISB Members: <http://wp.me/pA5NN-X>



Social Media

- ✦ Twitter, Facebook are big players
- ✦ How could our state use Twitter?
 - ▣ GIS Hub could have a Twitter account to send out notices
 - ▣ Individuals & organizations could use their own accounts to send out information, and if related to GIS in North Dakota, include:
#ndgis

Social Media

- ✚ A tantalizing Twitter test: #ndgis
 - ▣ Anything of interest or impact to GIS users in the state, include #ndgis. Examples:
 - New/updated data & applications
 - Spatial events such as fires, tornadoes, road closures, floods...
 - Topics of interest
 - Training & conference opportunities
 - ▣ Keep it professional and factual

Google Base Map Partner Program

- ✦ <http://maps.google.com/help/maps/basemap/>
- ✦ Improve navigation in your community, new roads, housing developments, paths, parcels
- ✦ Update landmarks, places of interest
- ✦ Ensure accurate location of critical infrastructure such as airports, hospitals



Thank You!

For more information, please contact:

Bob Nutsch, GIS Coordinator

701-328-3212

bnutsch@nd.gov

Twitter: [@BobNutsch](https://twitter.com/BobNutsch)

www.nd.gov/gis



ESRI Workshop is Next
2:15
Ballroom 5 (That's Here!)