



# Child Care Licensing Database

*Update on CCL project status and connection to ECIDS data warehouse*

*Rep. Glenn Bosch, Chairman | Interim Information Technology Committee | October 21, 2021*

NORTH  
**Dakota**  
Be Legendary.™

Human Services

# CHILD CARE LICENSING (CCL) DATABASE

Project to implement an electronic child care licensing system and web portal



## Origin of project

- 2015 audit recommendation to develop cohesive data system to monitor and track licensing process
- 2016 CCDF final rule implementing CCDBG Act of 2014



## Major components

- New license evaluation
- License renewal
- Inspections
- Correction orders
- Integration with workforce registry and child care assistance program



## Status

- Major design/dev work complete
- System integrations and user interface dev ongoing
- Training and process change mgmt. Jan-May 2022
- Projected go live June 2022

# IMPROVING THE LICENSING EXPERIENCE

## Highlights of the CCL project

- Transition to paperless licensing
  - Upload documentation (including updates)
  - Automated reminders for license renewal and required health/safety training
- Interface with Resource and Referral website
  - Parents can see provider details in real time as they search for child care
- More efficient licensing review
  - On-site completion of licensing paperwork
  - Whole-program view available to licensor
  - Enhanced reporting capability





Digitization

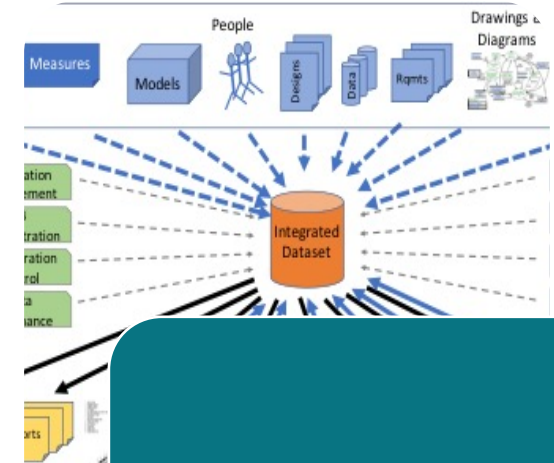
1980-2000s



Manchester United vs. Birmingham City			
Home Team		Away Team	
Squad No.	Position	Goals Scored	Goals Conceded
1	Goalkeeper	0	0
2	Defender	0	0
3	Defender	0	0
4	Defender	0	0
5	Defender	0	0
6	Defender	0	0
7	Striker	0	0
8	Striker	1	0
9	Striker	0	0
10	Striker	0	0
11	Midfielder	2	0
12	Midfielder	0	0
13	Midfielder	0	0
14	Midfielder	0	0
15	Midfielder	0	0
16	Midfielder	0	0
17	Midfielder	0	0
18	Midfielder	0	0
19	Midfielder	0	0
20	Midfielder	0	0
21	Midfielder	0	0
22	Defender	0	0
23	Defender	0	0
24	Defender	0	0
25	Defender	0	0
26	Defender	0	0
27	Defender	0	0
28	Defender	0	0
29	Defender	0	0
30	Defender	0	0

Modernization

2000-2020s



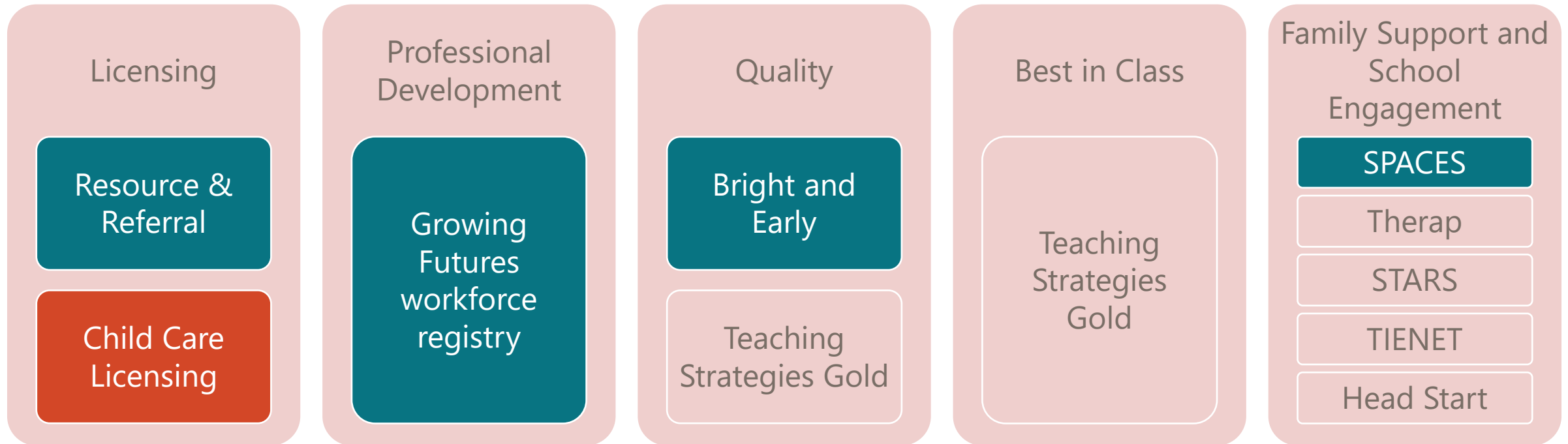
Integration

2010-2030s



# CCL HAS BUILT IN INTEGRATIONS WITH FOUR KEY EARLY CHILDHOOD DATA SYSTEMS TO REDUCE ADMINISTRATIVE BURDEN

## Self Service Early Childhood Portal



EPSDT

Health Tracks

Vital Records

WIC

MMIS

Right Track

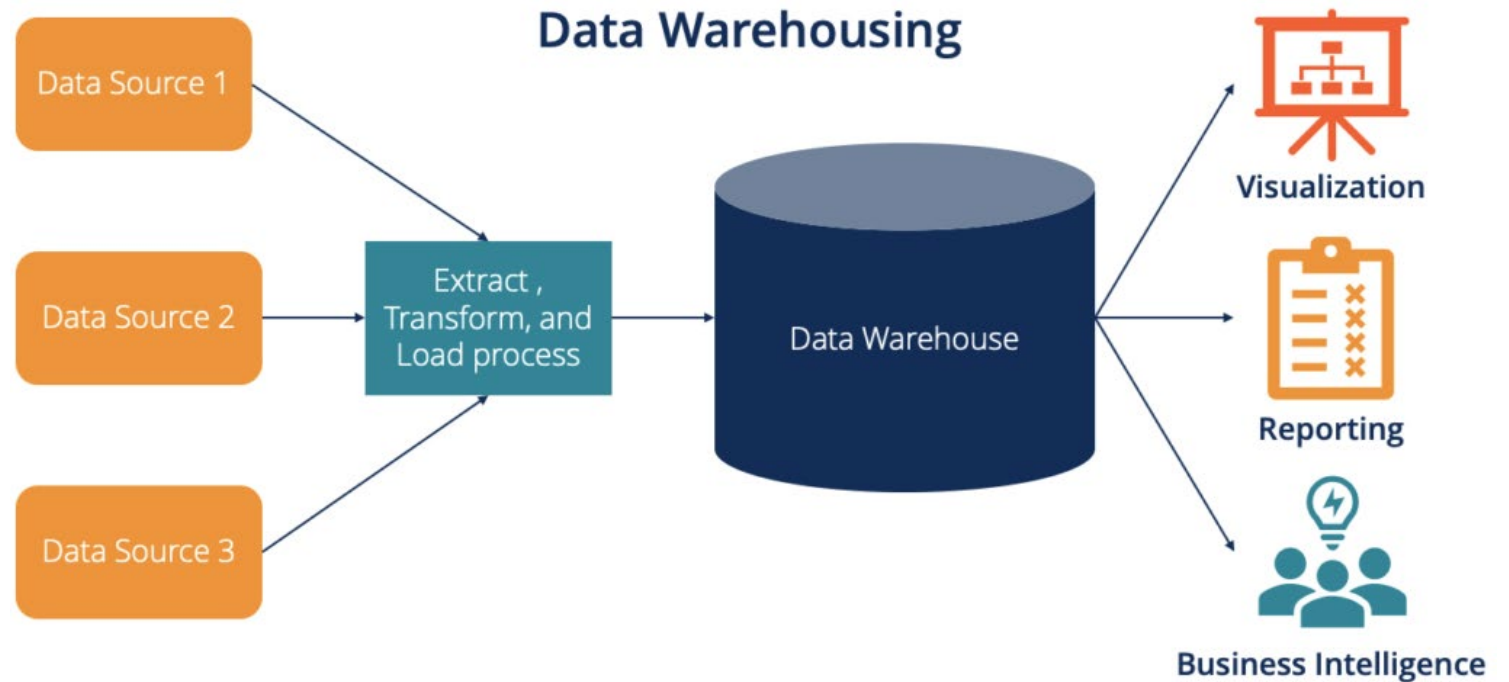
MyAvatar EHR

## Early Childhood Integrated Data System (ECIDS)

# EARLY CHILDHOOD INTEGRATED DATA SYSTEM (ECIDS)

Project to create a data warehouse focused on early childhood

- Collects, integrates, maintains, stores, and reports information from various early childhood programs
- Involves **multiple organizations** that serve children and families from birth to age 5



# EARLY CHILDHOOD INTEGRATED DATA SYSTEM (ECIDS)

Project to create a data warehouse focused on early childhood



## Origin of project

- 2009 Head Start requirement to consider data in early childhood policy
- 2018 Preschool Development Grant award to develop plan
- 2021 creation of early childhood division within DHS and budget authority to begin ECIDS work



## Major components

- Identify source data systems
- Establish data governance principles and practices
- Identify core data elements to support analysis using ECIDS data warehouse



## Status

- Establish project committee
- Identify timeline for integration of first 2-4 datasets
- Finalize early use cases to guide prioritization of work

# CREATING AN ECIDS IN NORTH DAKOTA WILL...

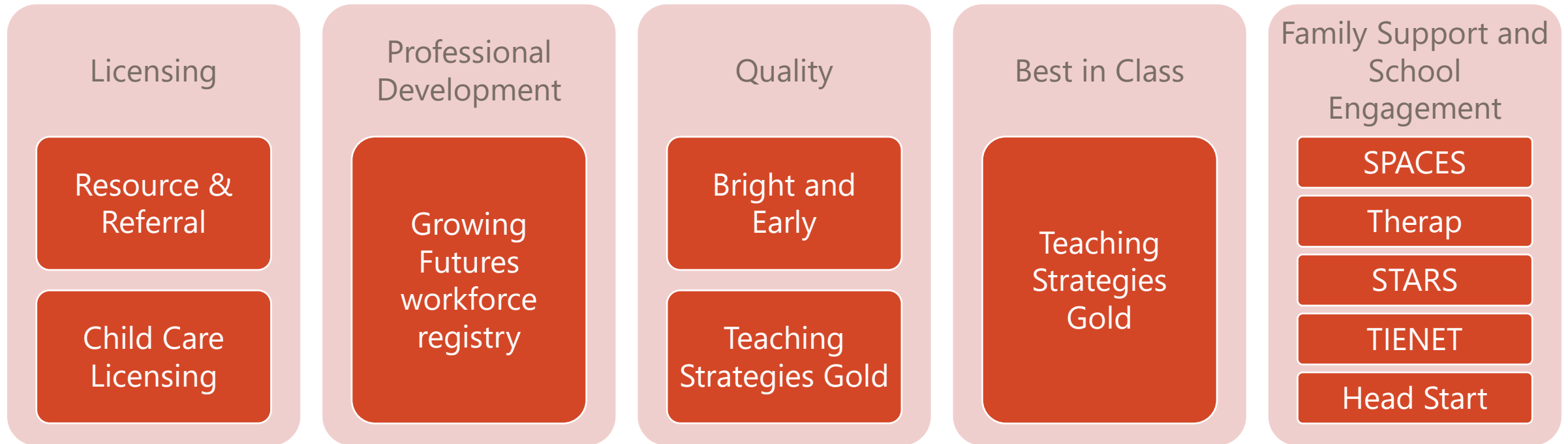
Integrate	Integrate data from various early childhood programs and services
Enable	Enable decision making to improve the coordination among and quality of services
Support	Support collaborative thinking between service providers, state agencies and policymakers
Improve	Improve efficiency of data management and reporting for stakeholders
Maximize	Maximize return on resources invested in collecting quality data
Inform	Inform policies and practices that support better outcomes for children and families.



# A DATA WAREHOUSE MOVES BEYOND OPERATIONAL INTEGRATIONS BETWEEN SYSTEMS

ECIDS will extract, transform and process data from existing early childhood systems

## Self Service Early Childhood Portal



EPSDT

Health Tracks

Vital Records

WIC

MMIS

Right Track

MyAvatar EHR

## Early Childhood Integrated Data System (ECIDS)

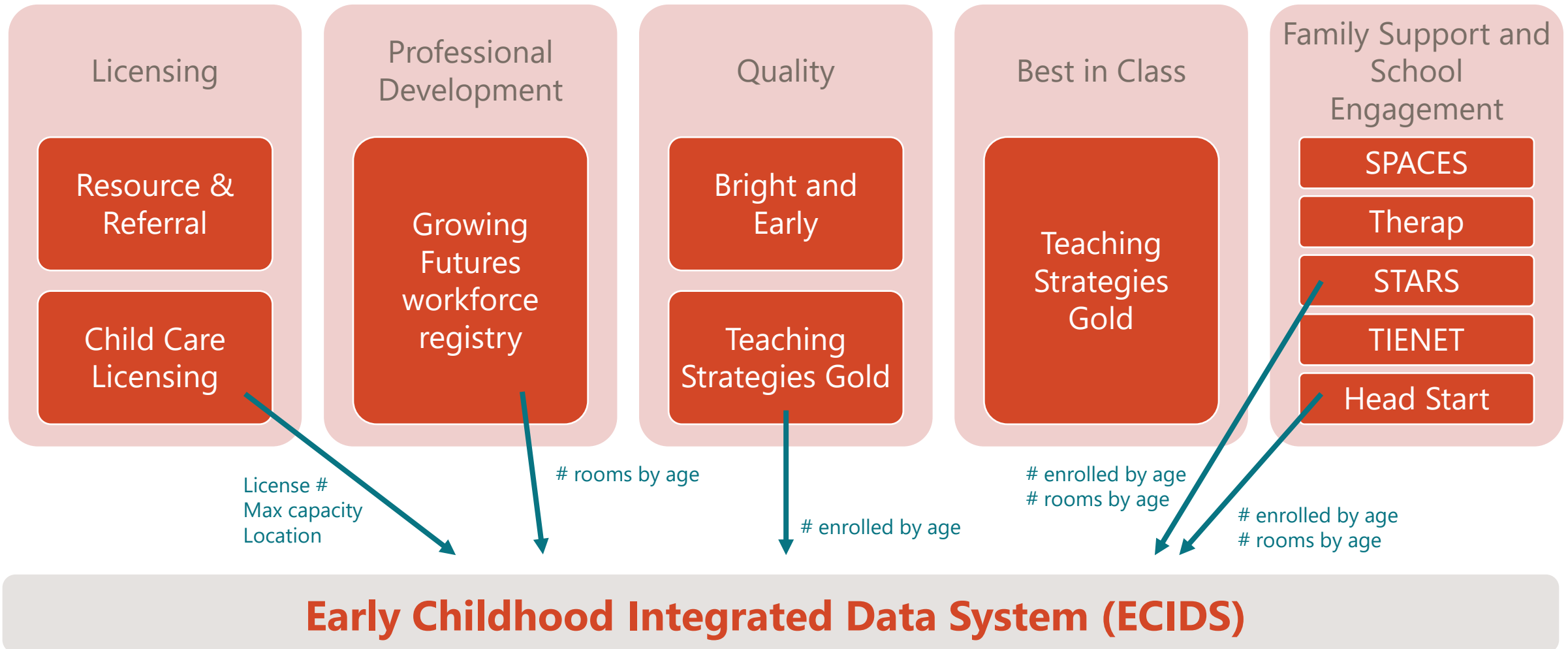


# DISTINCT COUNT OF CHILDREN IN NORTH DAKOTA EARLY CHILDHOOD PROGRAMS

## *Policy Question*

How many children are accessing early childhood programs in North Dakota?

# How many children are in child care by age by county?





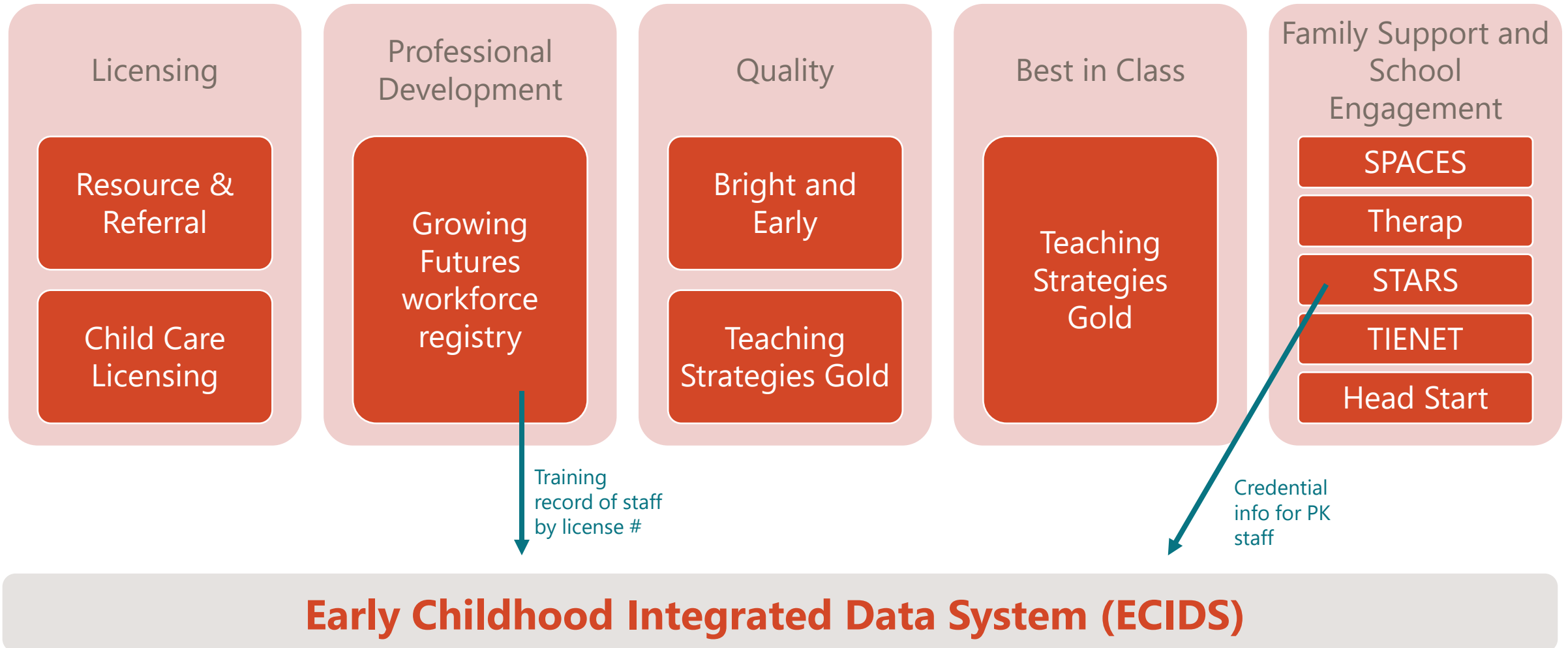
# WORKFORCE PROFESSIONAL DEVELOPMENT

## ***Policy Question***

What are the professional development needs for the early childhood workforce ?

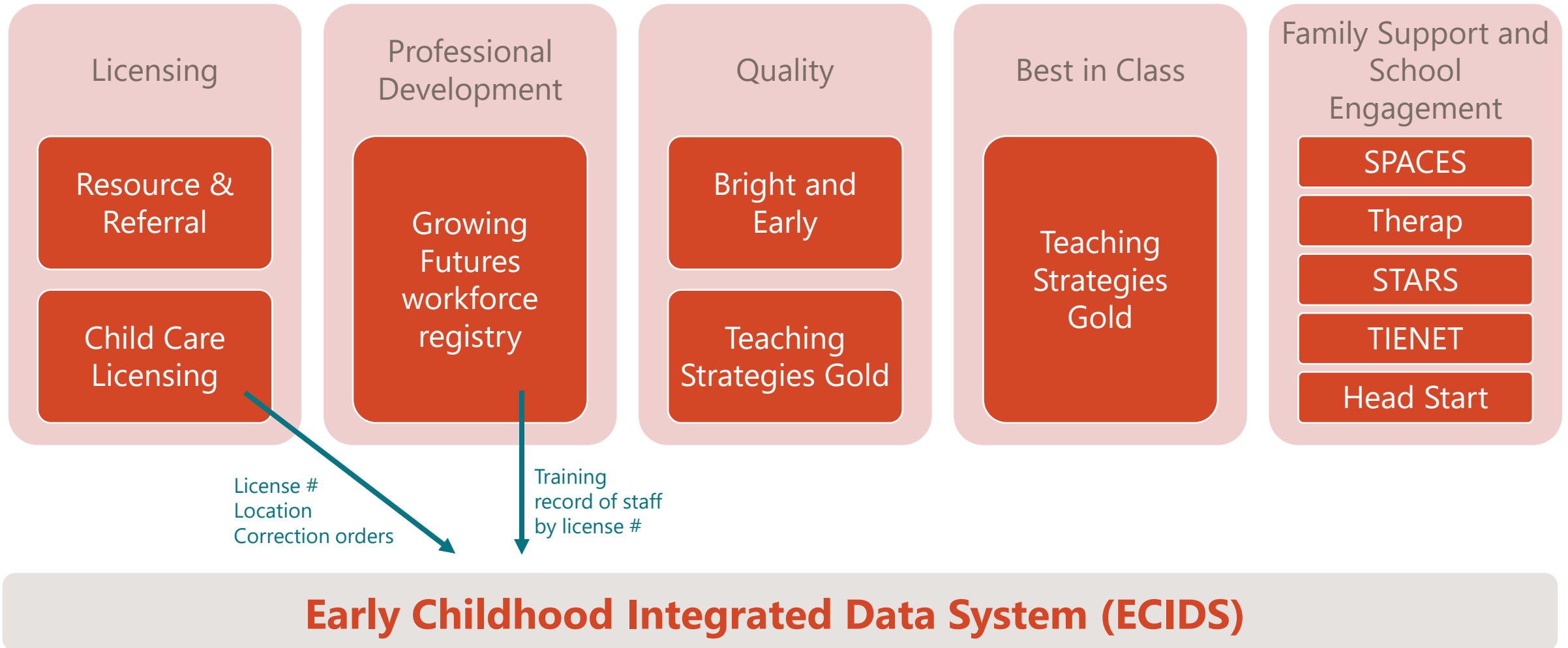


# What % of child care workers have received xyz training?





# Are the rate of license correction orders lower with completion of xyz training?



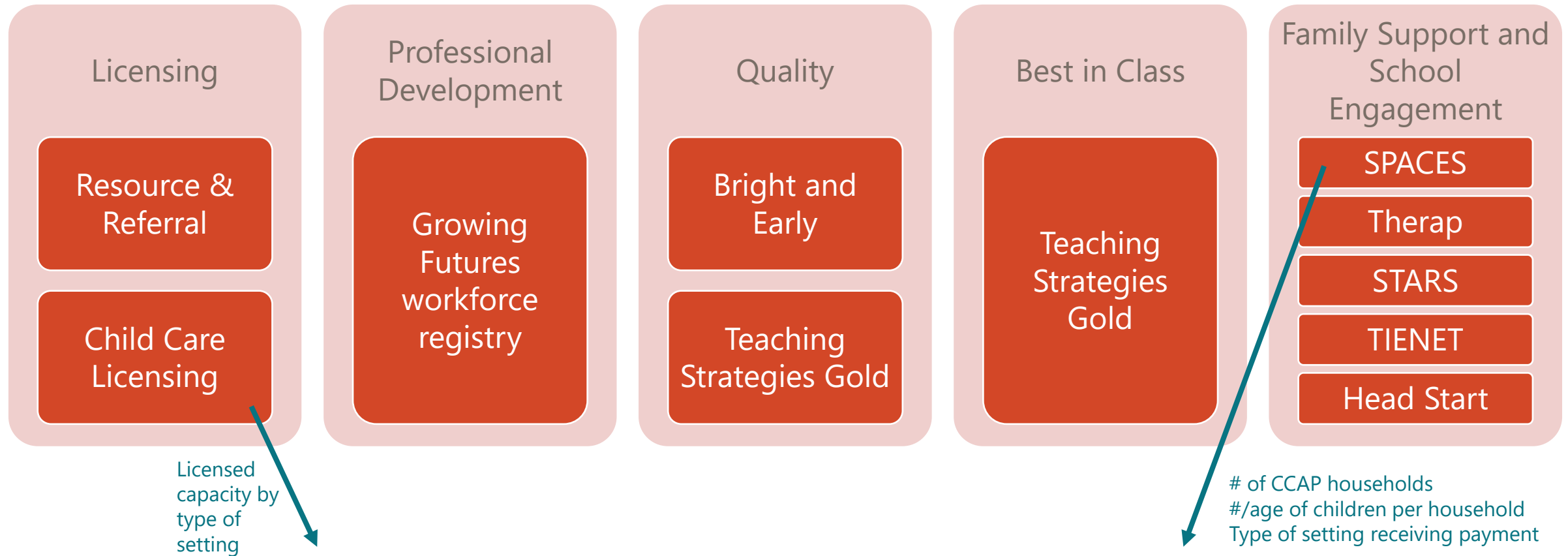


# EARLY IDENTIFICATION OF POPULATIONS WITH SPECIAL NEEDS

## ***Policy Question***

How are various child and family characteristics related to participation in early childhood experiences?

# Are families who receive child care assistance more likely to utilize center-based care?



**Early Childhood Integrated Data System (ECIDS)**



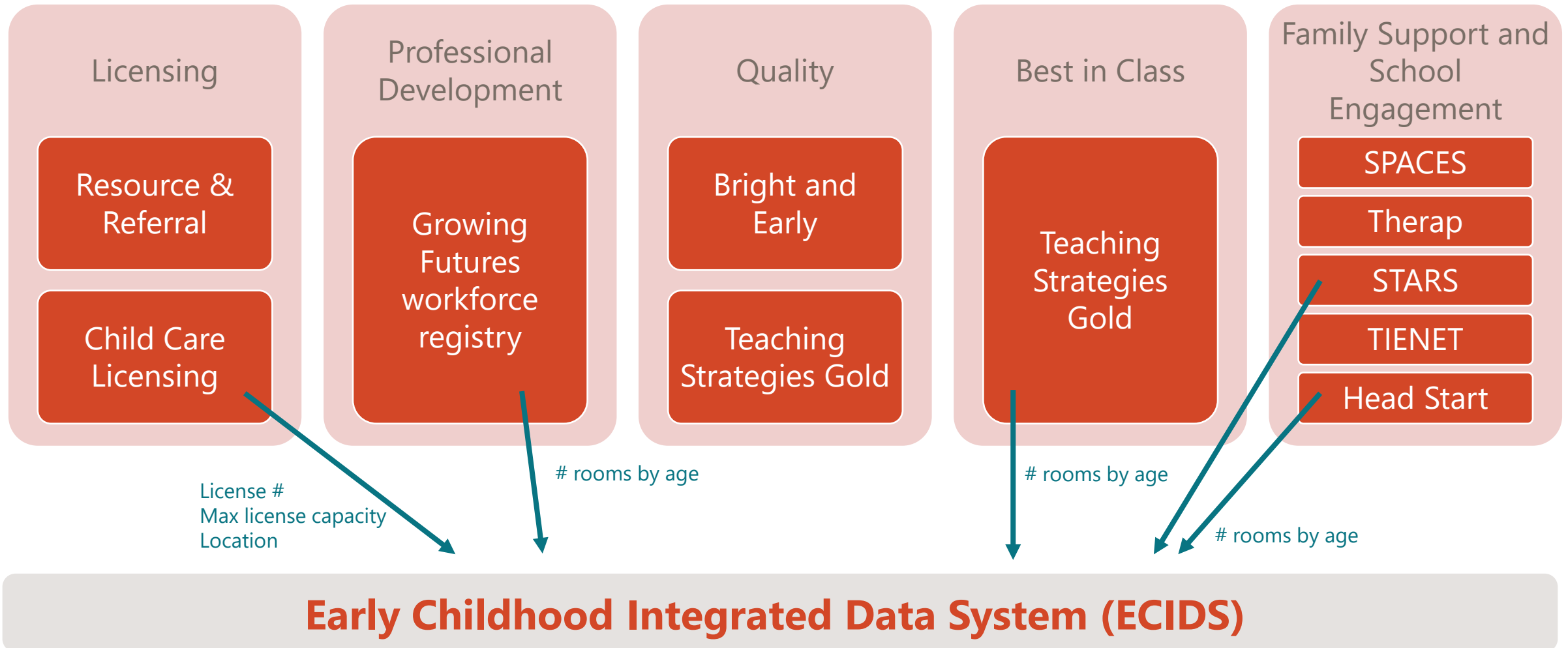
# TRANSITION TO KINDERGARTEN

## ***Policy Question***

Are there differences in early learning success and overall school readiness in children transitioning to kindergarten based on the type of early childhood program(s) in which they participated the year prior to kindergarten entry?



# What early childhood experience options do parents of four-year olds have for their children?





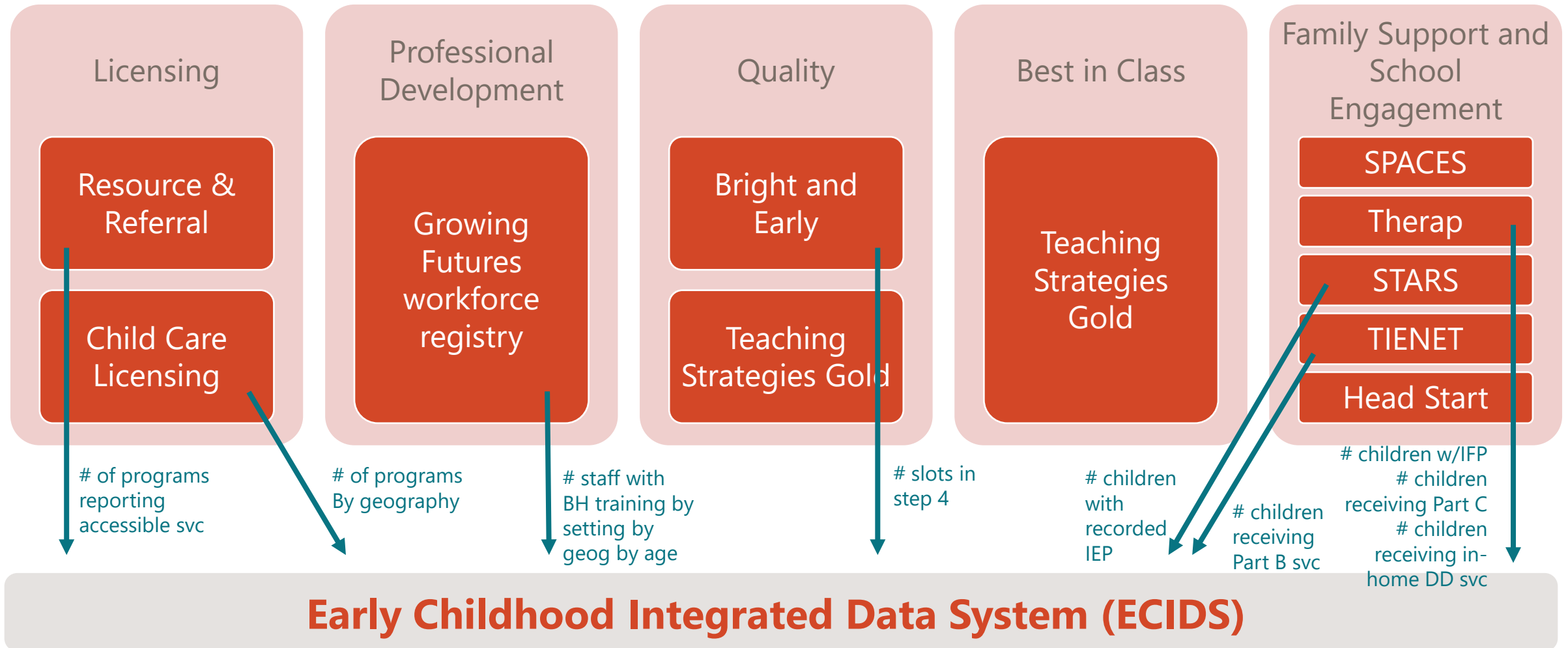


# EARLY CHILDHOOD PORTAL

## ***Policy Question***

What early childhood programs are available to families based on their location and needs of the family?

# Are children with special needs able to find child care when and where their families need it?





## Contact Information

Kay Larson, Director  
Early Childhood Division

Carmen Traeholt,  
EC Licensing Administrator

600 E Boulevard Ave, Ste 325  
Bismarck, ND 58505  
Phone: 701-328-2115  
Toll Free: 800-997-8516 or 711 (TTY)  
Email: [dhsec@nd.gov](mailto:dhsec@nd.gov)  
[www.nd.gov/dhs/services/earlychildhood](http://www.nd.gov/dhs/services/earlychildhood)

