

SENATE BILL 2012
SENATE APPROPRIATIONS
SENATOR RAY HOLMBERG, CHAIRMAN

Child Support Division
Jim Fleming, Director

MISSION:

Provide Quality, Efficient and Effective Human Services, Which Improve the Lives of People.



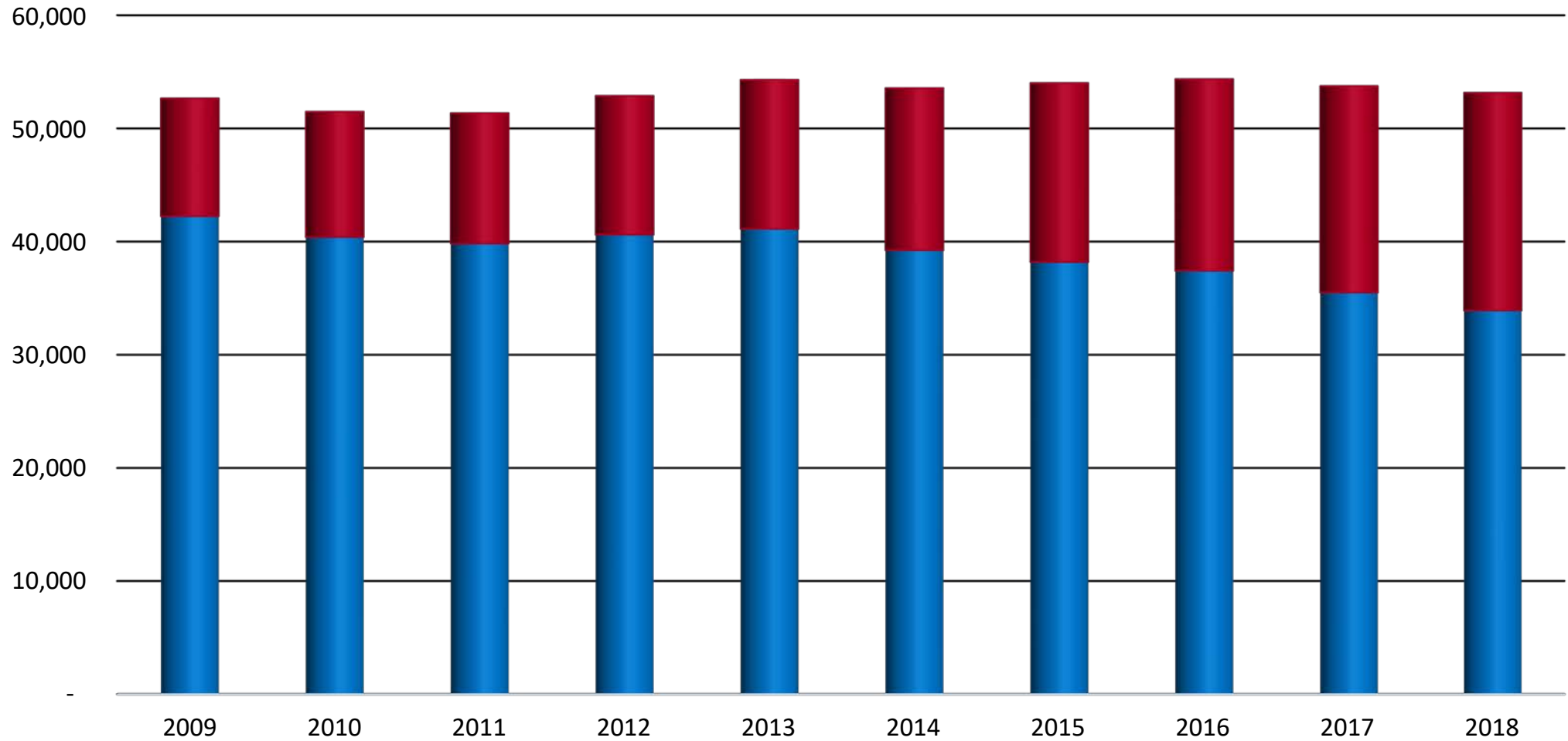
WHAT IS OUR PROGRAM PURPOSE?

- Obtain child support and medical support from parents
- Encourage positive relationships between parents and their children

WHO DO WE SERVE?

- 65,999 children
- 83,721 parents
- 53,243 cases
 - Full service cases – 34,075
 - Limited service cases – 19,168

CASELOAD



	2009	2010	2011	2012	2013	2014	2015	2016	2017	2018
■ NonIV-D	10,410	11,072	11,518	12,260	13,176	14,323	15,811	16,933	18,238	19,228
■ IV-D	42,241	40,399	39,827	40,611	41,121	39,234	38,197	37,423	35,502	33,918

PARTNERS

- Employers
- Judges
- Clerks of court
- Sheriffs
- ND state and local government agencies
- Other state and tribal child support programs
- Private attorneys
- Car dealers
- Gaming operators

FULL SERVICE CASES

- Customer service
- Establishment of paternity
- Establishment of a child support and medical support order
- Income withholding
- Other enforcement actions such as tax refund offset and license suspension
- Employment services
- Periodic review and modification of child support obligation
- Payment processing

LIMITED SERVICE CASES

- Customer service
- Income withholding
- Payment processing

OPENING A FULL SERVICE CASE

- TANF Referral
- Medicaid Referral
- Foster Care Referral
- Referral from another state or tribal or international child support program
- Application by a parent

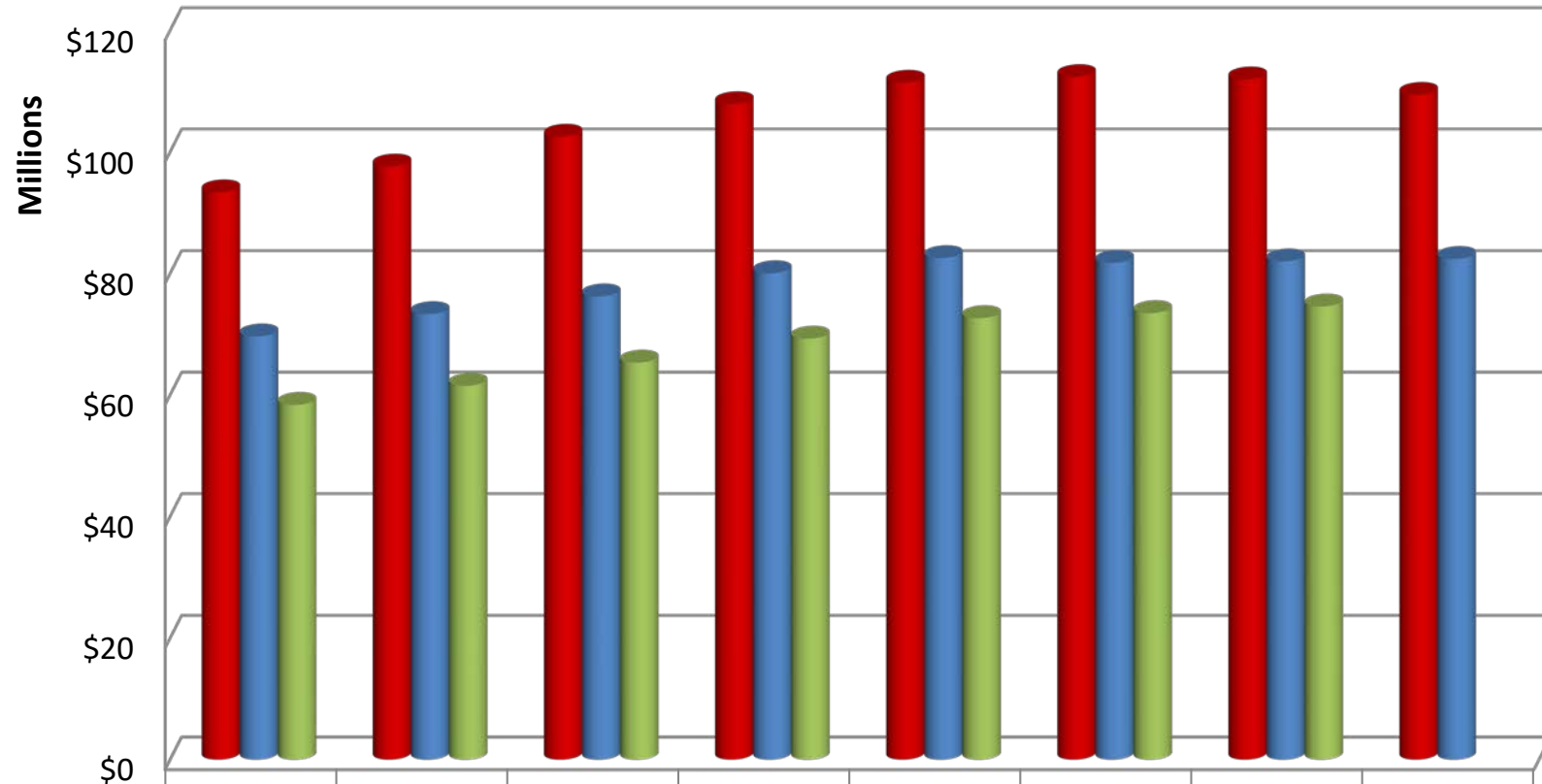
HOW DO CUSTOMERS REACH US?

- childsupportnd.com
- Williston
- Minot
- Devils Lake
- Grand Forks
- Fargo
- Jamestown
- Bismarck
- Dickinson
- Central (Bismarck)

NEW IN 2017-2019

- 2017 SB 2277 – expiration of obligations of parents under a sentence of 180 days or more
- Mandated fee increase - \$35 per year for full-service cases with collection of \$550 or more, and \$5 per month for limited services cases
- Periodic review shortened from 36 to 18 months
- Relocation of vacant positions to Bismarck
- Telework arrangements
- Assignment of enforcement cases by payor rather than payee
- New website

COLLECTION OF CURRENT SUPPORT

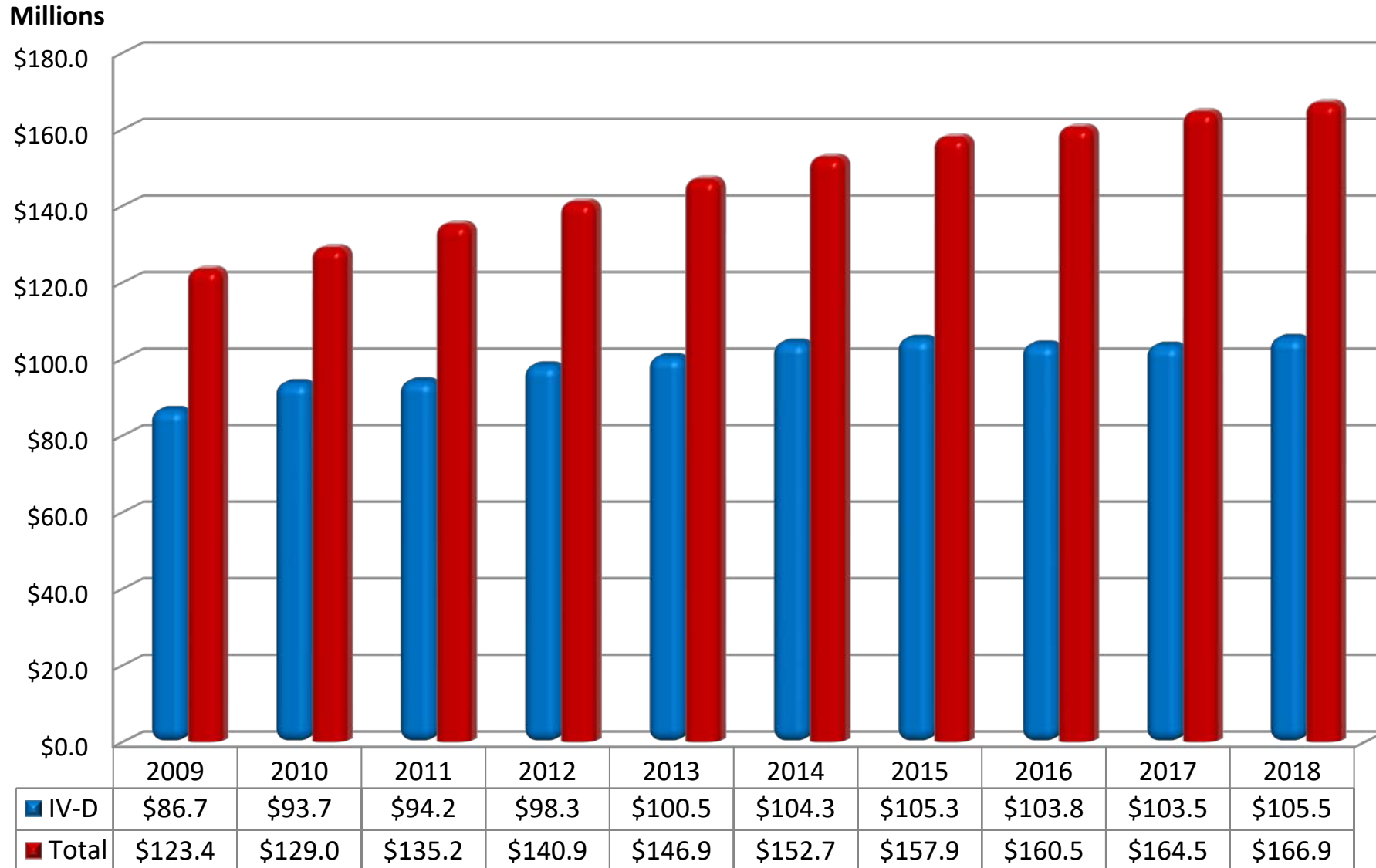


■ North Dakota Due	\$93,328,728	\$97,570,081	\$102,479,909	\$107,838,996	\$111,363,799	\$112,289,681	\$111,907,969	\$109,366,920
■ North Dakota Collected	\$69,599,364	\$73,266,692	\$76,186,870	\$80,000,982	\$82,495,635	\$81,709,837	\$81,946,726	\$82,353,845
■ National Average Collected*	\$58,330,455	\$61,469,151	\$65,279,702	\$69,232,635	\$72,609,197	\$73,437,451	\$74,530,707	

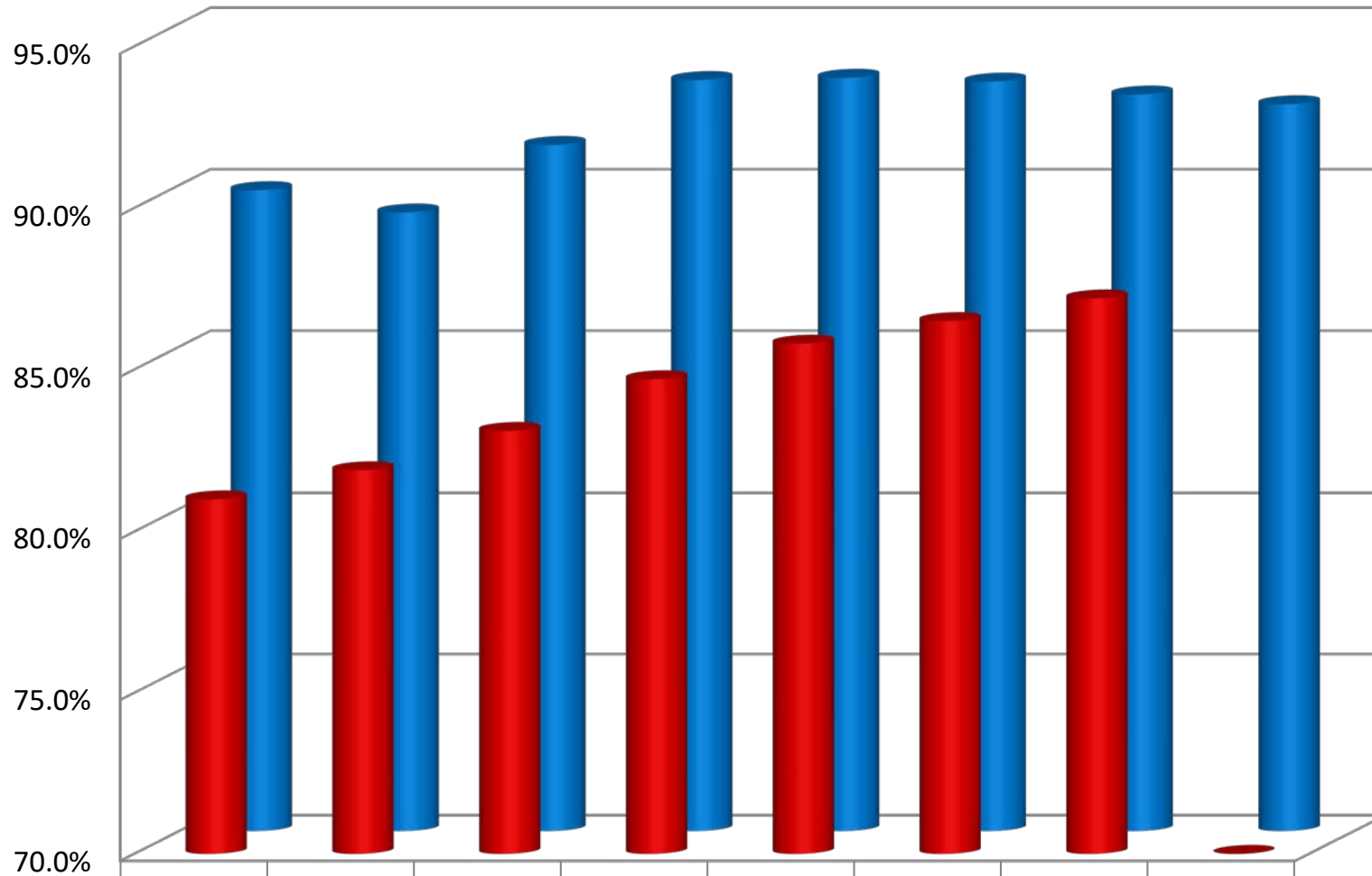
*National average performance applied to North Dakota's current support due.

	2011	2012	2013	2014	2015	2016	2017	2018
North Dakota	74.6%	75.1%	74.3%	74.2%	74.1%	72.8%	73.2%	75.3%
National Average	62.5%	63.0%	63.7%	64.2%	65.2%	65.4%	66.6%	N/A

PAYMENTS (CALENDAR YEARS 2009-2018)

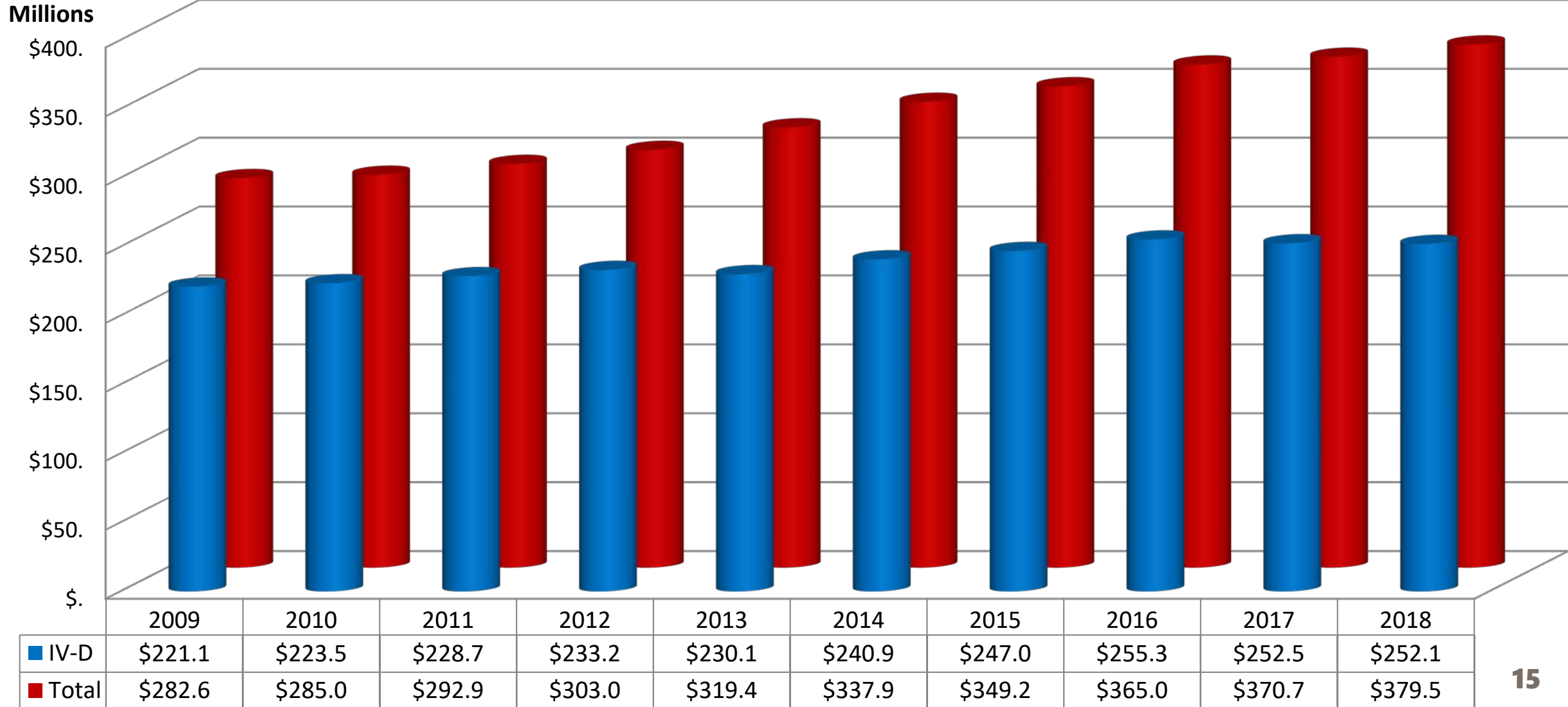


ORDER ESTABLISHMENT



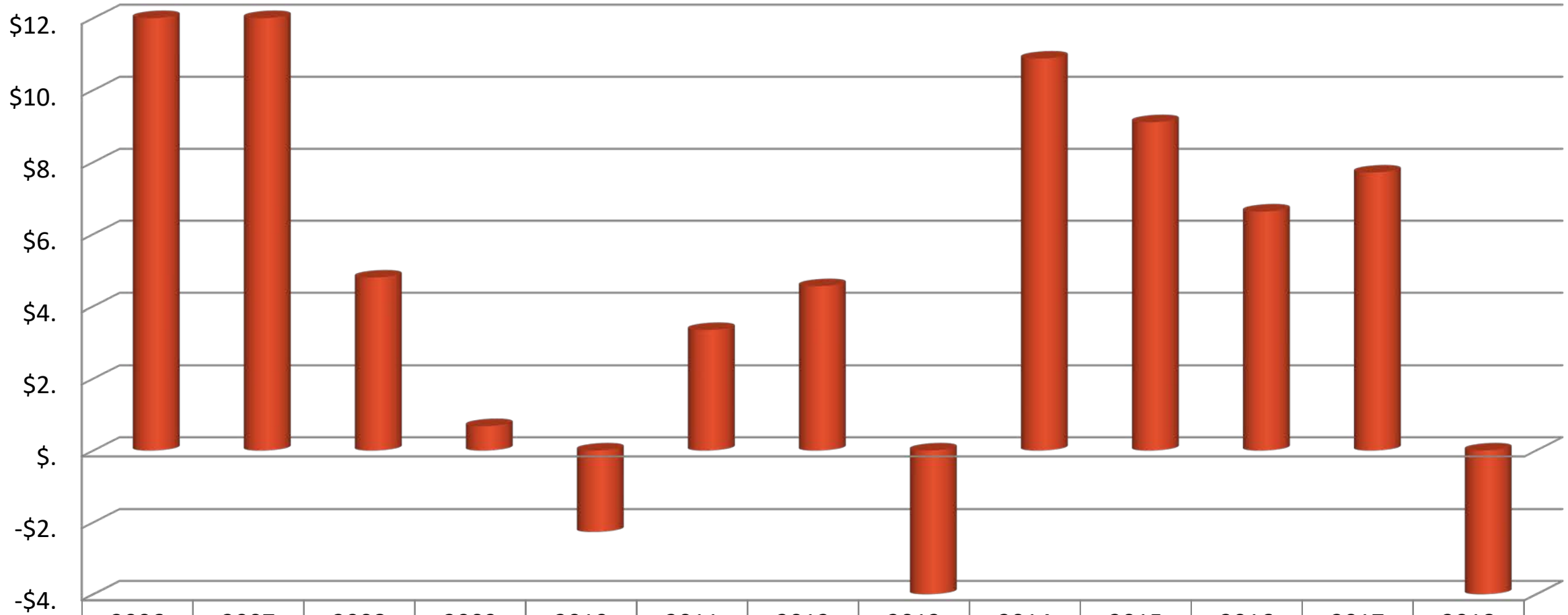
■ National Average	81.0%	81.9%	83.1%	84.7%	85.8%	86.5%	87.2%	0
■ North Dakota	89.8%	89.2%	91.2%	93.3%	93.3%	93.2%	92.8%	92.5%

UNPAID SUPPORT (END OF CALENDAR YEAR)



UNPAID SUPPORT (CHANGE STATE FISCAL YEAR END)

Millions



■ Change

2006	2007	2008	2009	2010	2011	2012	2013	2014	2015	2016	2017	2018
\$12.6	\$12.2	\$4.8	\$.7	-\$2.3	\$3.3	\$4.6	-\$5.5	\$10.9	\$9.1	\$6.6	\$7.7	-\$5.5

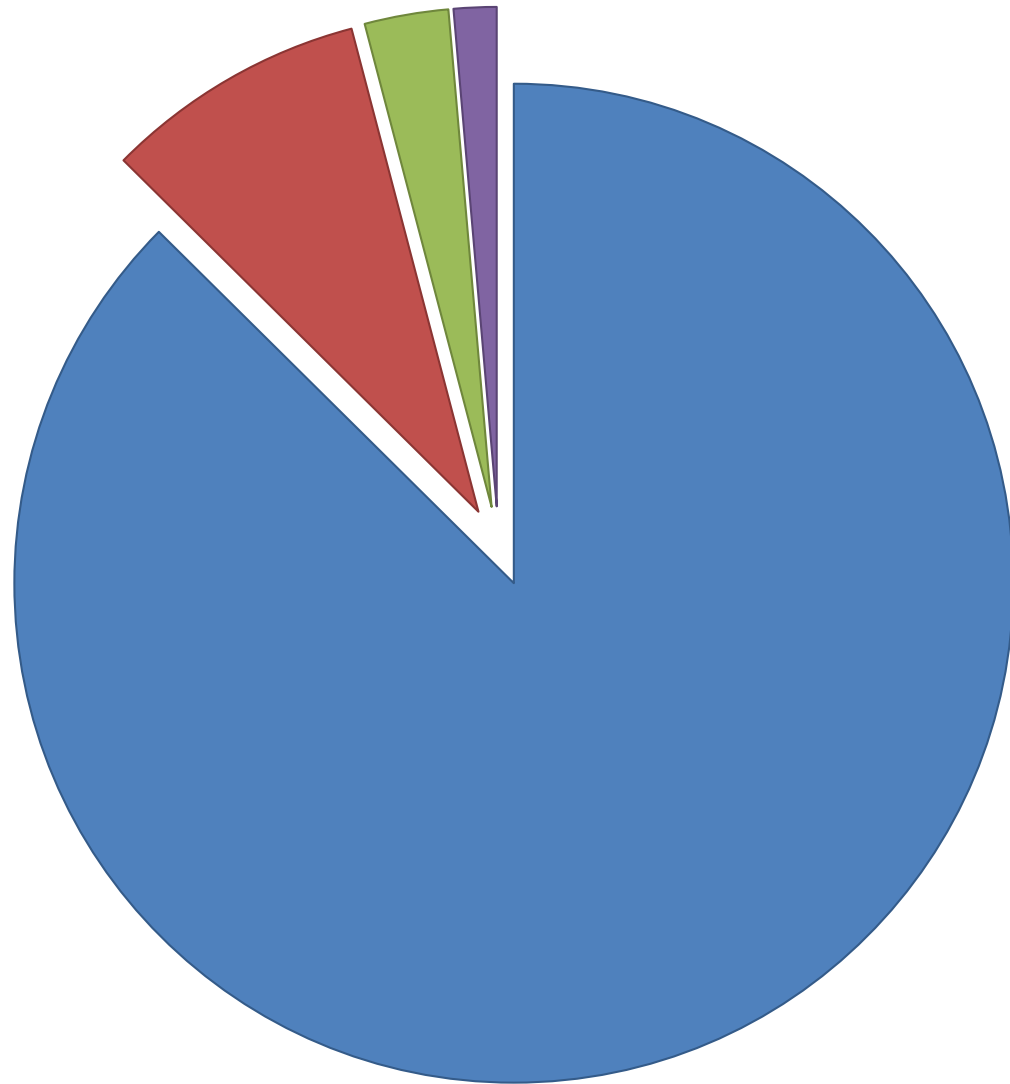
OTHER MEASURES OF PERFORMANCE

- Paternity establishment – 105.55% (compared to caseload last year needing paternity established)
 - Total # of children in full service cases on 9-30-2018 who were born out of wedlock and have paternity established, divided by total # of children in full service cases on 9-30-2017 who were born out of wedlock
- Cases with a collection on arrears – 65.8%
- Cost Effectiveness - \$6.22

OVERALL PERFORMANCE

	Orders Established	Paternity Established	Current Support	Cases with Arrears Collection	Cost Benefit
ND FFY 2018	92.51%	105.55%	75.3%	65.8%	?
ND FFY 2017	92.75% (6)	105.31% (6)	73.23% (5)	63.45% (28)	\$6.08 (15)
#1 State	95.35%	149.19%	84.1%	84.16%	\$10.42
#5 State	92.85%	107.52%	73.23%	70.42%	\$8.55
#10 State	91.84%	104.72%	69.5%	68.9%	\$6.33

COLLECTIONS - WHERE THE MONEY GOES



■ Families - 87.41%

■ Other states & countries - 8.49%

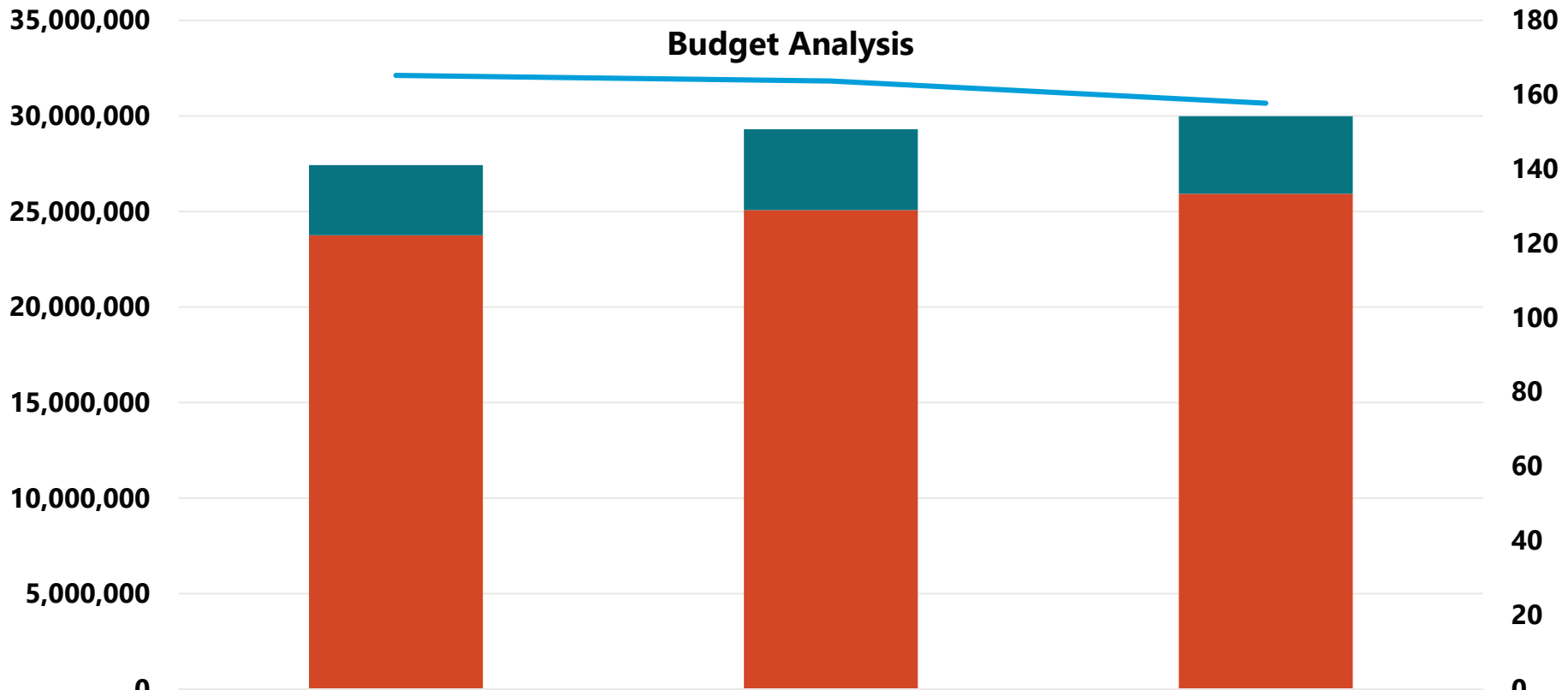
■ Retained by ND - 2.71%

■ Federal Reimbursement - 1.38%

OVERVIEW OF BUDGET CHANGES

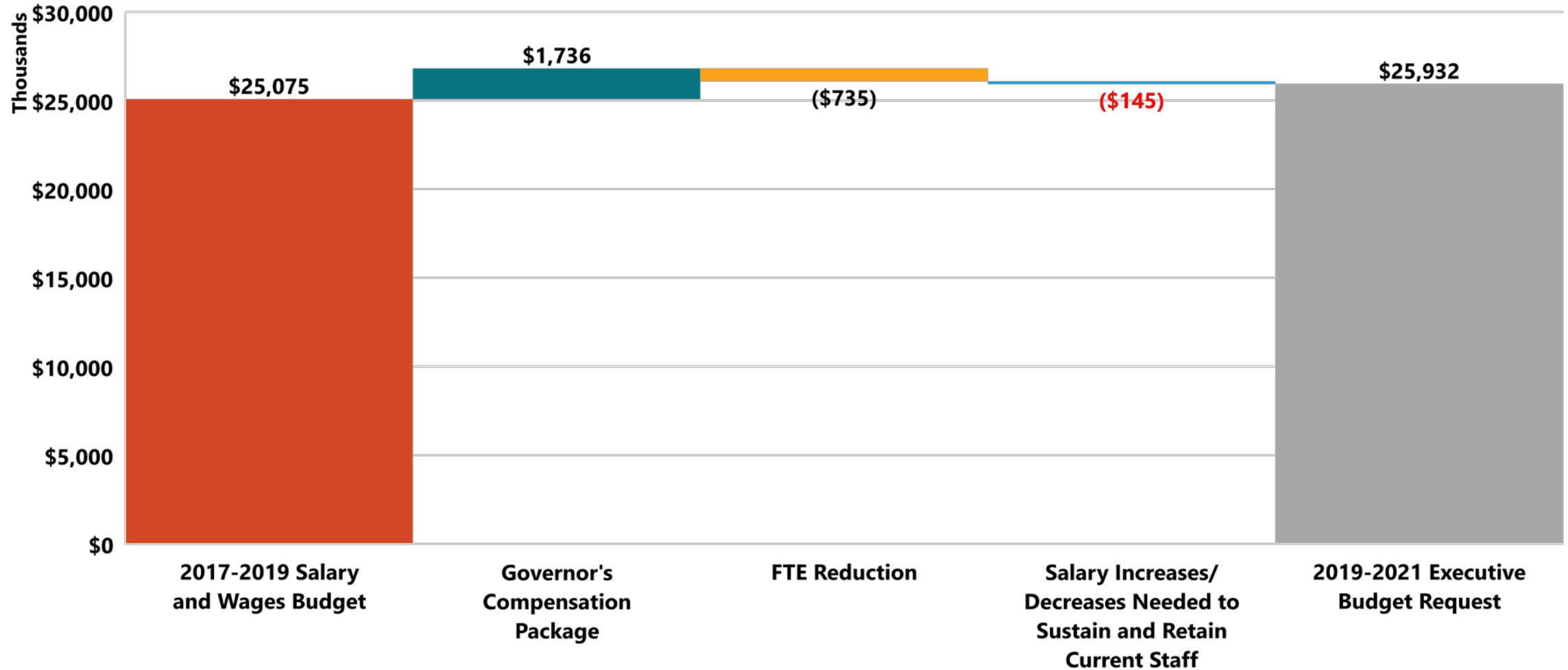
Description	2017-2019 Budget	Increase/ (Decrease)	2019-2021 Executive Budget
Salary and Wages	25,075,437	856,244	25,931,681
Operating	4,232,824	(180,786)	4,052,038
Grants			
Total	29,308,261	675,458	29,983,719
General Fund	7,962,814	291,158	8,253,972
Federal Funds	17,738,022	107,101	17,845,123
Other Funds	3,607,425	277,199	3,884,624
Total	29,308,261	675,458	29,983,719
Full Time Equivalent (FTE)	163.70	(6.00)	157.70

OVERVIEW OF BUDGET CHANGES

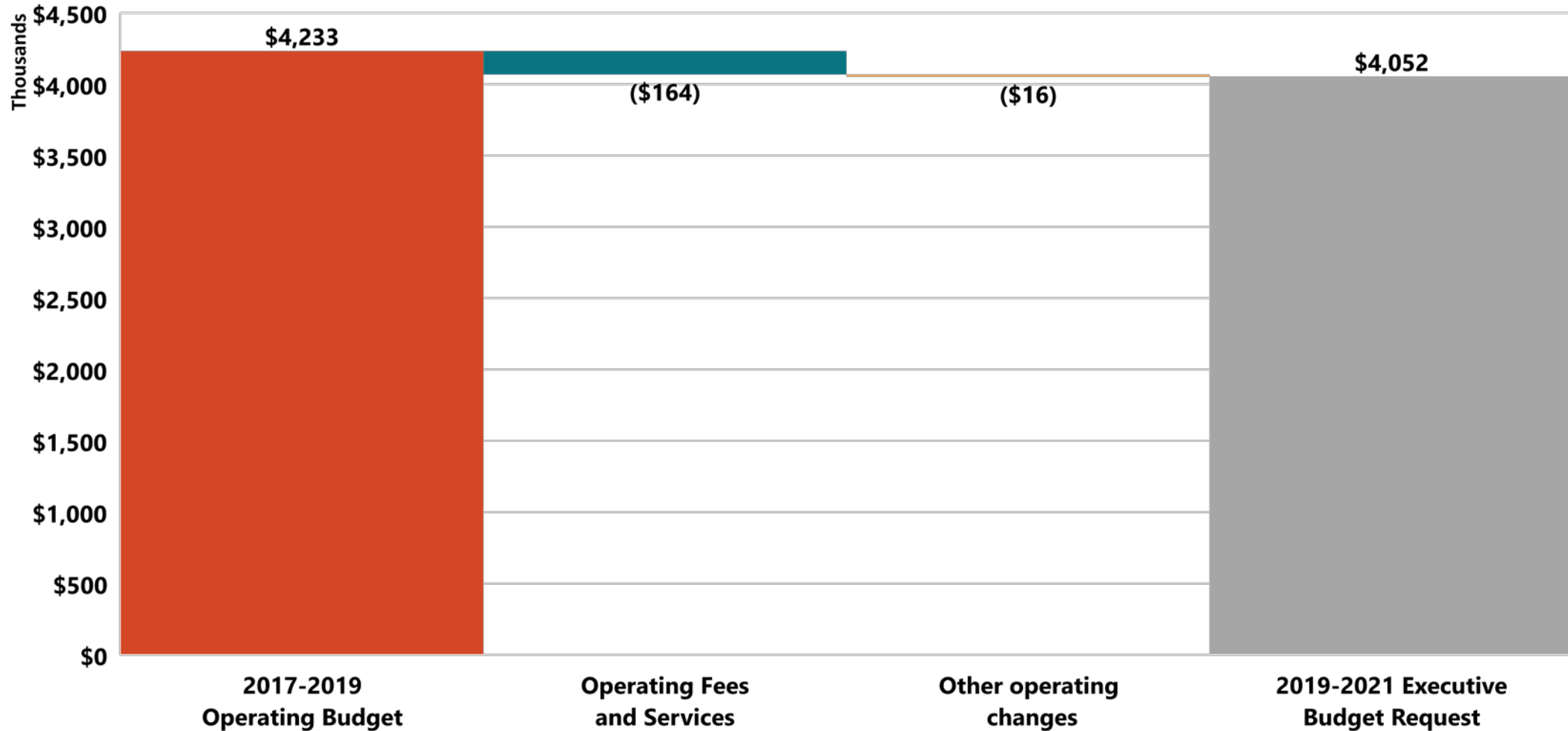


	2015-17 Biennium Expenditures	2017-19 Biennium Appropriation	2019-21 Executive Budget Request
Operating Expenses	3,675,014	4,232,824	4,052,038
Salaries and Wages	23,755,441	25,075,437	25,931,681
FTE	165.2	163.7	157.7

MAJOR SALARY AND WAGES DIFFERENCES



MAJOR OPERATING DIFFERENCES



OVERVIEW OF FUNDING

