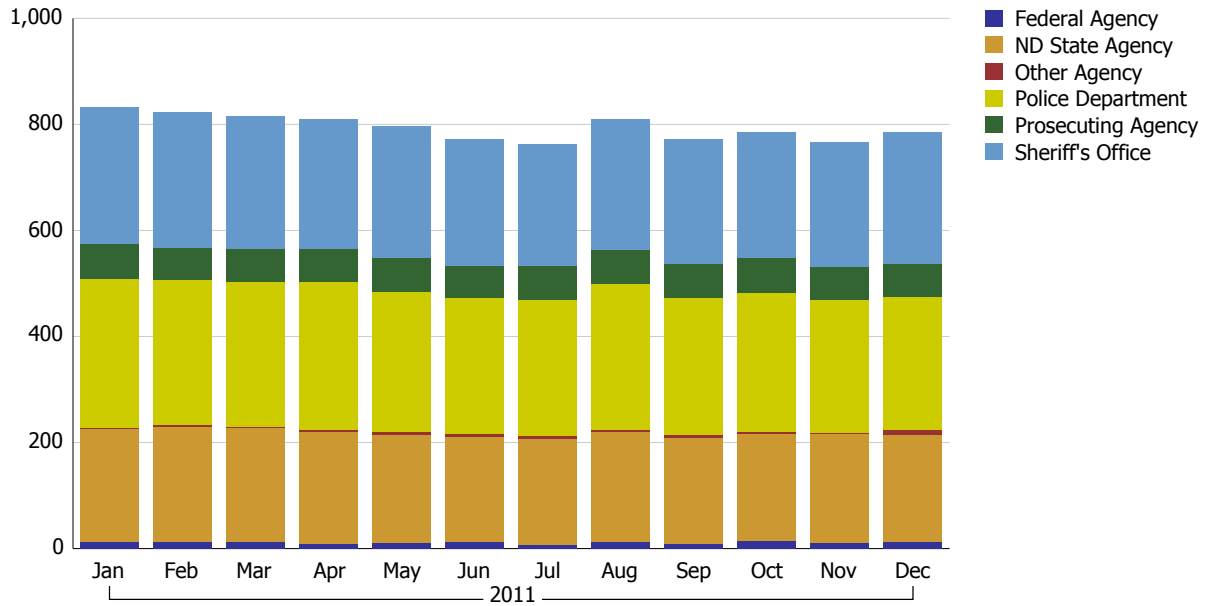


**CJIS PORTAL USAGE - January 1, 2011 thru December 31, 2011**

**CJIS Portal Active Users by Type**



	2011											
	Jan	Feb	Mar	Apr	May	Jun	Jul	Aug	Sep	Oct	Nov	Dec
Total Active Users	832	823	815	810	796	771	763	811	772	784	766	785
Federal Agency	12	12	12	9	10	13	8	13	10	15	12	13
ND State Agency	214	218	216	212	205	199	200	208	199	202	204	201
Other Agency	2	3	1	3	5	4	4	4	5	3	3	10
Police Department	281	273	273	279	264	257	258	274	260	262	250	251
Prosecuting Agency	66	62	64	63	64	60	63	65	63	66	63	62
Sheriff's Office	257	255	249	244	248	238	230	247	235	236	234	248